

01

3 BEDROOM (2 BATH)

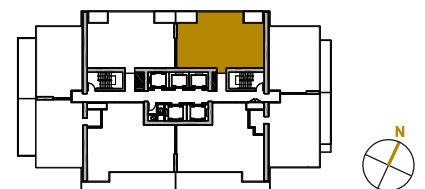
TOTAL AREA 1126 SQ.FT.

1038 SQ.FT.
INDOOR AREA

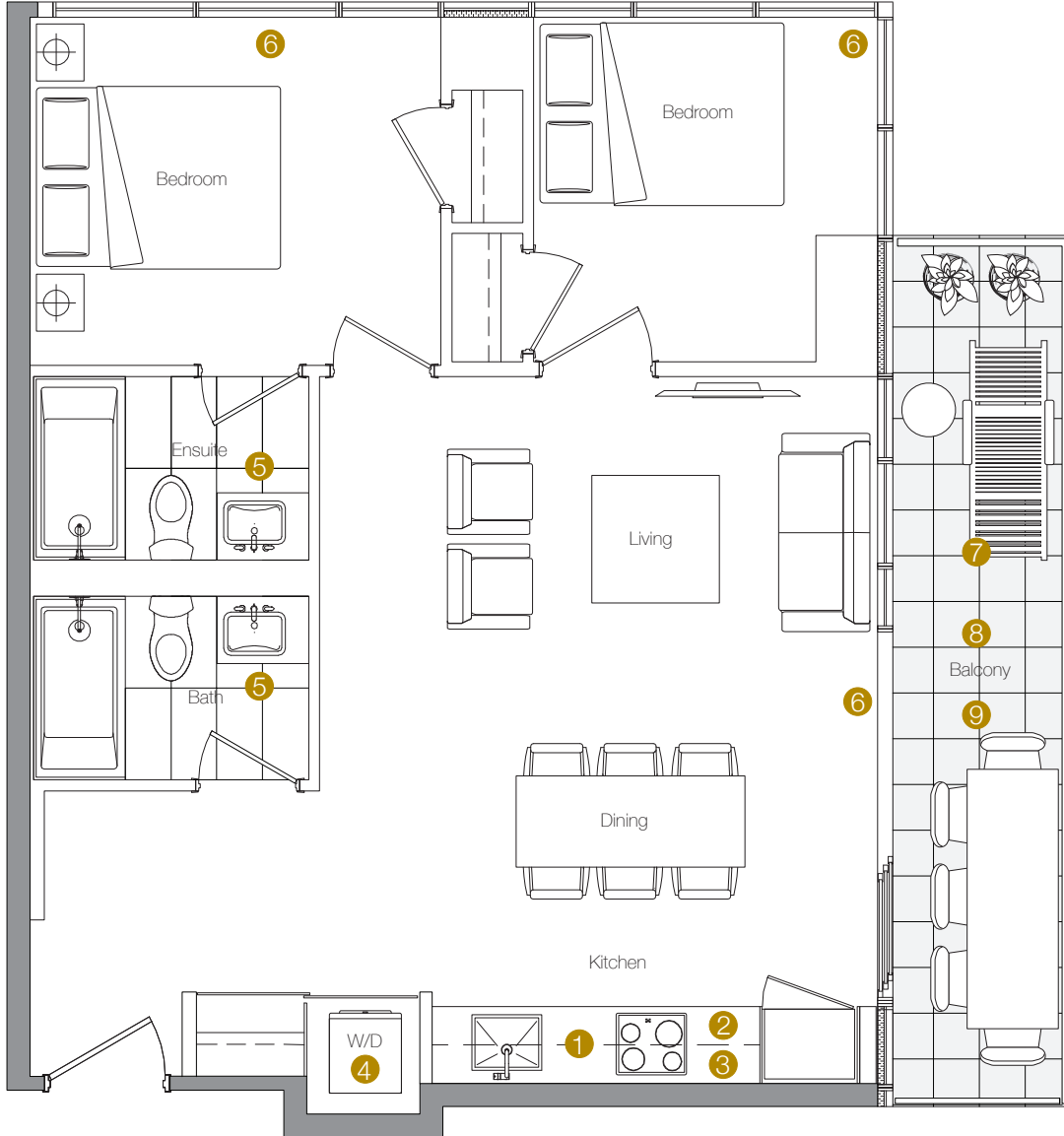
88 SQ.FT.
OUTDOOR AREA

Feature Highlights

- 1 Miele Appliances
- 2 Kitchen Storage Organizer
- 3 Blum Kitchen Hardware
- 4 Miele Washer/Dryer
- 5 Kohler/Grohe Bathroom Plumbing Fixtures
- 6 Roller - Shades
- 7 Composite Wood Decking
- 8 Radiant ceiling heaters
- 9 Wood-grain soffit ceiling treatment



The developer reserves the right to make minor revisions to interior wall locations and exterior window system. All materials and drawings are approximate. Information is subject to change without notice. Actual square footage may vary from the stated floorplan. Furniture and upgrades shown on plans are for illustration purposes only and are not included. E.&O.E.



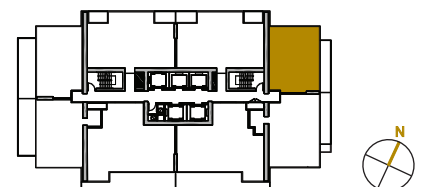
02

2 BEDROOM

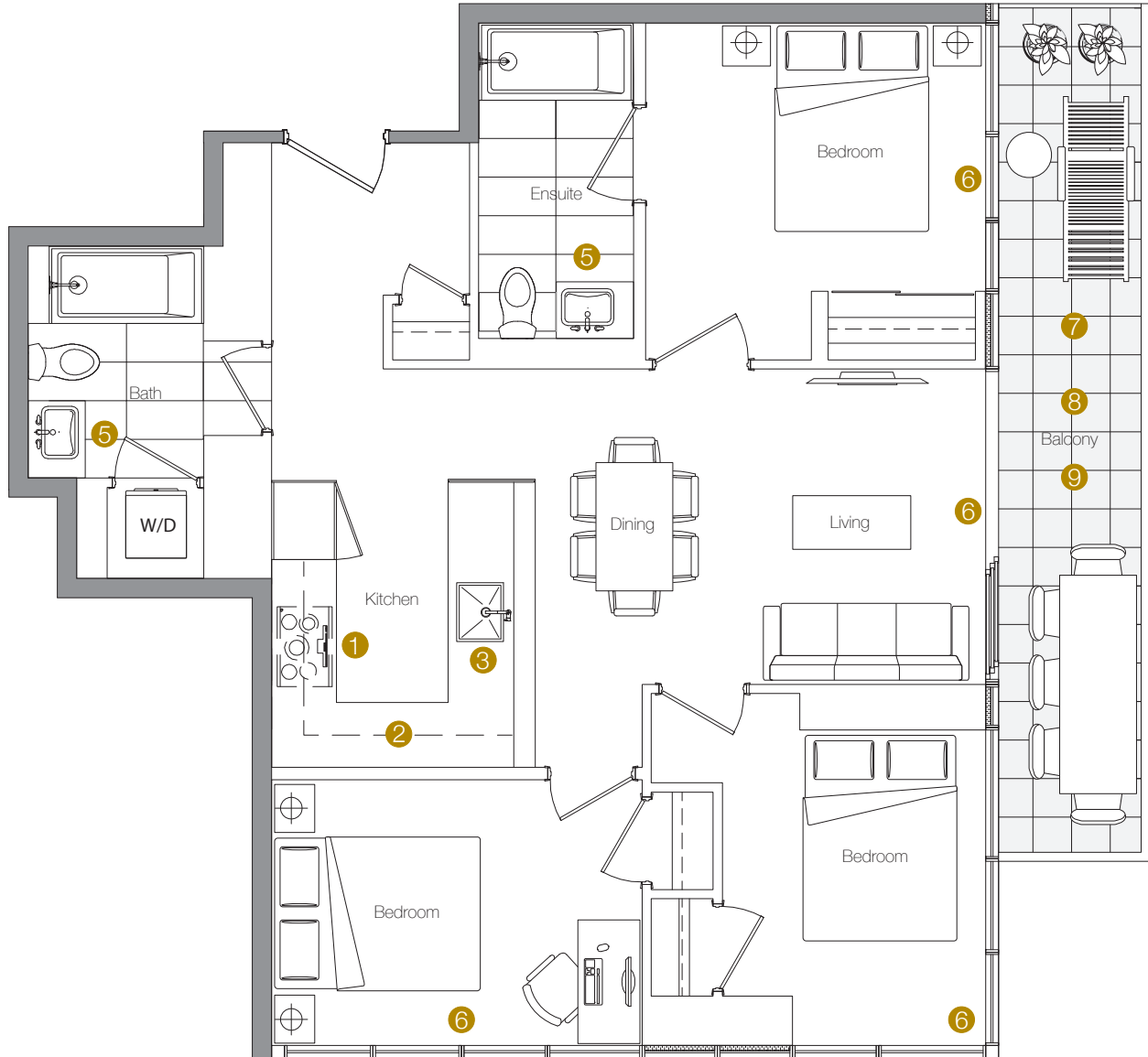
TOTAL AREA	868 SQ.FT.
760 SQ.FT. INDOOR AREA	108 SQ.FT. OUTDOOR AREA

Feature Highlights

- 1 Miele Appliances
- 2 Kitchen Storage Organizer
- 3 Blum Kitchen Hardware
- 4 Miele Washer/Dryer
- 5 Kohler/Grohe Bathroom Plumbing Fixtures
- 6 Roller - Shades
- 7 Composite Wood Decking
- 8 Radiant ceiling heaters
- 9 Wood-grain soffit ceiling treatment



The developer reserves the right to make minor revisions to interior wall locations and exterior window system. All materials and drawings are approximate. Information is subject to change without notice. Actual square footage may vary from the stated floorplan. Furniture and upgrades shown on plans are for illustration purposes only and are not included. E.&O.E.



03

3 BEDROOM

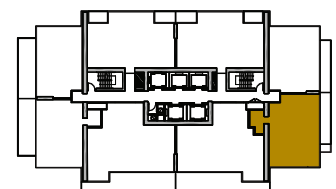
TOTAL AREA 1033 SQ.FT.

908 SQ.FT.
INDOOR AREA

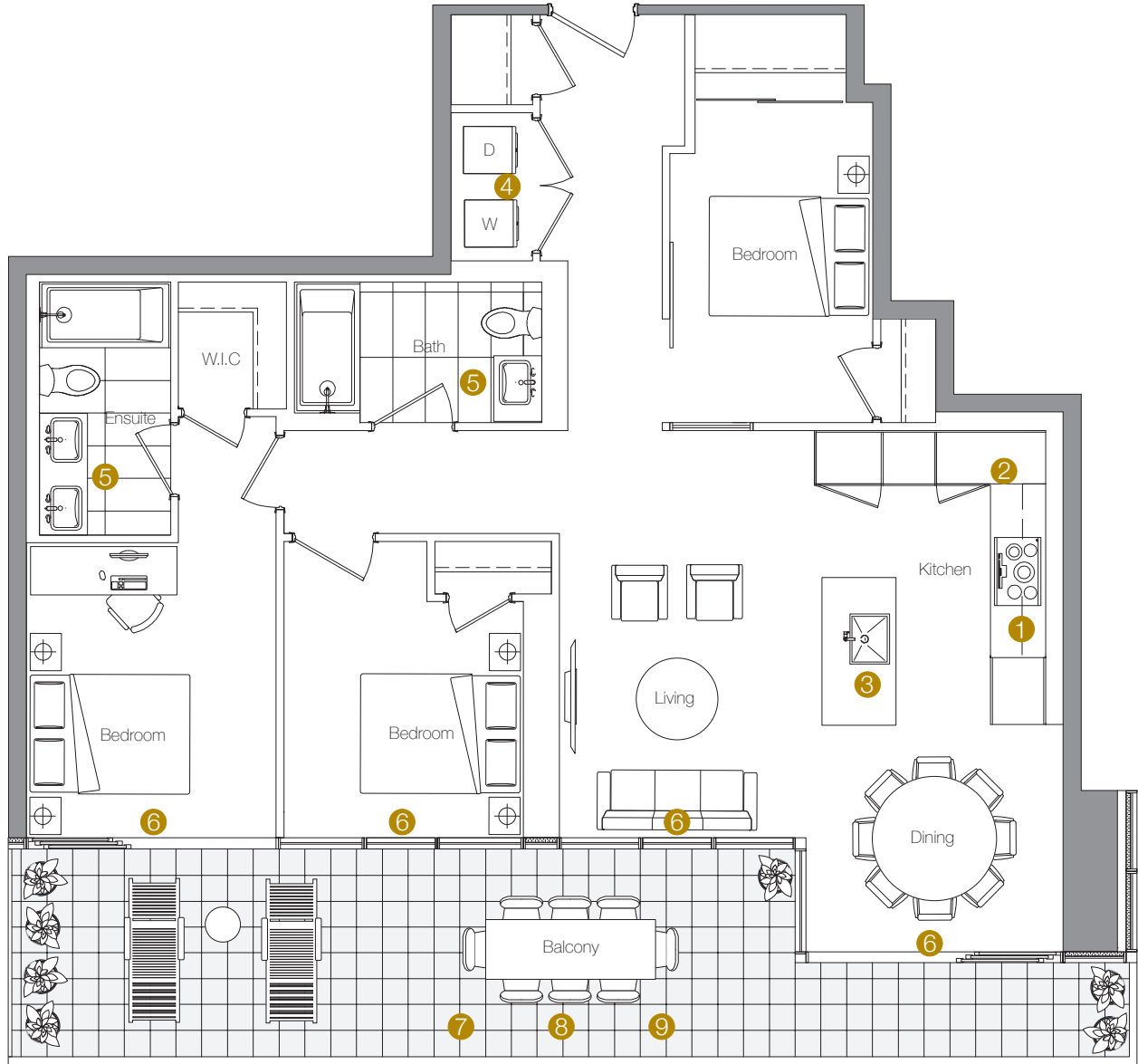
125 SQ.FT.
OUTDOOR AREA

Feature Highlights

- 1 Miele Appliances
- 2 Kitchen Storage Organizer
- 3 Blum Kitchen Hardware
- 4 Miele Washer/Dryer
- 5 Kohler/Grohe Bathroom Plumbing Fixtures
- 6 Roller - Shades
- 7 Composite Wood Decking
- 8 Radiant ceiling heaters
- 9 Wood-grain soffit ceiling treatment



The developer reserves the right to make minor revisions to interior wall locations and exterior window system. All materials and drawings are approximate. Information is subject to change without notice. Actual square footage may vary from the stated floorplan. Furniture and upgrades shown on plans are for illustration purposes only and are not included. E.&O.E.



05

3 BEDROOM (2 BATH)

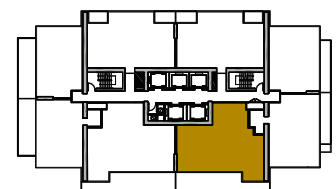
TOTAL AREA 1435 SQ.FT.

1155 SQ.FT.
INDOOR AREA

280 SQ.FT.
OUTDOOR AREA

Feature Highlights

- 1 Miele Appliances
- 2 Kitchen Storage Organizer
- 3 Blum Kitchen Hardware
- 4 Miele Washer/Dryer
- 5 Kohler/Grohe Bathroom Plumbing Fixtures
- 6 Roller - Shades
- 7 Composite Wood Decking
- 8 Radiant ceiling heaters
- 9 Wood-grain soffit ceiling treatment



The developer reserves the right to make minor revisions to interior wall locations and exterior window system. All materials and drawings are approximate. Information is subject to change without notice. Actual square footage may vary from the stated floorplan. Furniture and upgrades shown on plans are for illustration purposes only and are not included. E.&O.E.



06

3 BEDROOM

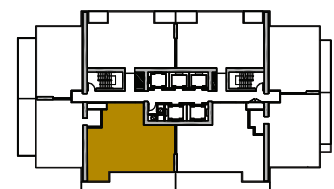
TOTAL AREA 1478 SQ.FT.

1198 SQ.FT.
INDOOR AREA

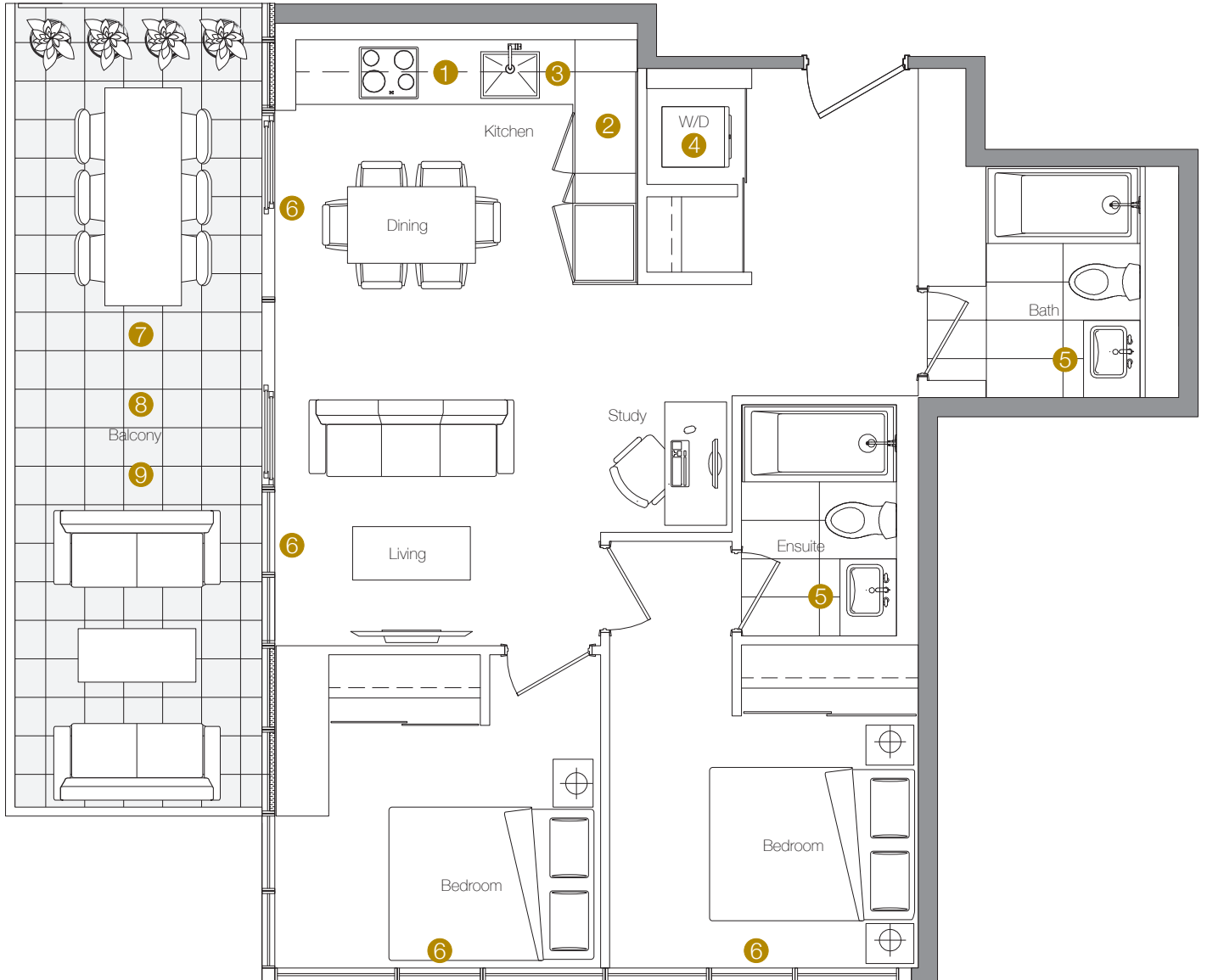
280 SQ.FT.
OUTDOOR AREA

Feature Highlights

- 1 Miele Appliances
- 2 Kitchen Storage Organizer
- 3 Blum Kitchen Hardware
- 4 Miele Washer/Dryer
- 5 Kohler/Grohe Bathroom Plumbing Fixtures
- 6 Roller - Shades
- 7 Composite Wood Decking
- 8 Radiant ceiling heaters
- 9 Wood-grain soffit ceiling treatment



The developer reserves the right to make minor revisions to interior wall locations and exterior window system. All materials and drawings are approximate. Information is subject to change without notice. Actual square footage may vary from the stated floorplan. Furniture and upgrades shown on plans are for illustration purposes only and are not included. E.&O.E.



07

2 BEDROOM + STUDY

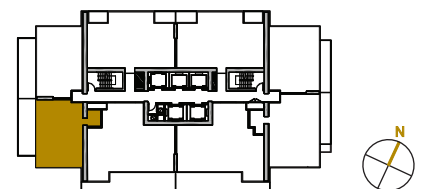
TOTAL AREA 968 SQ.FT.

760 SQ.FT.
INDOOR AREA

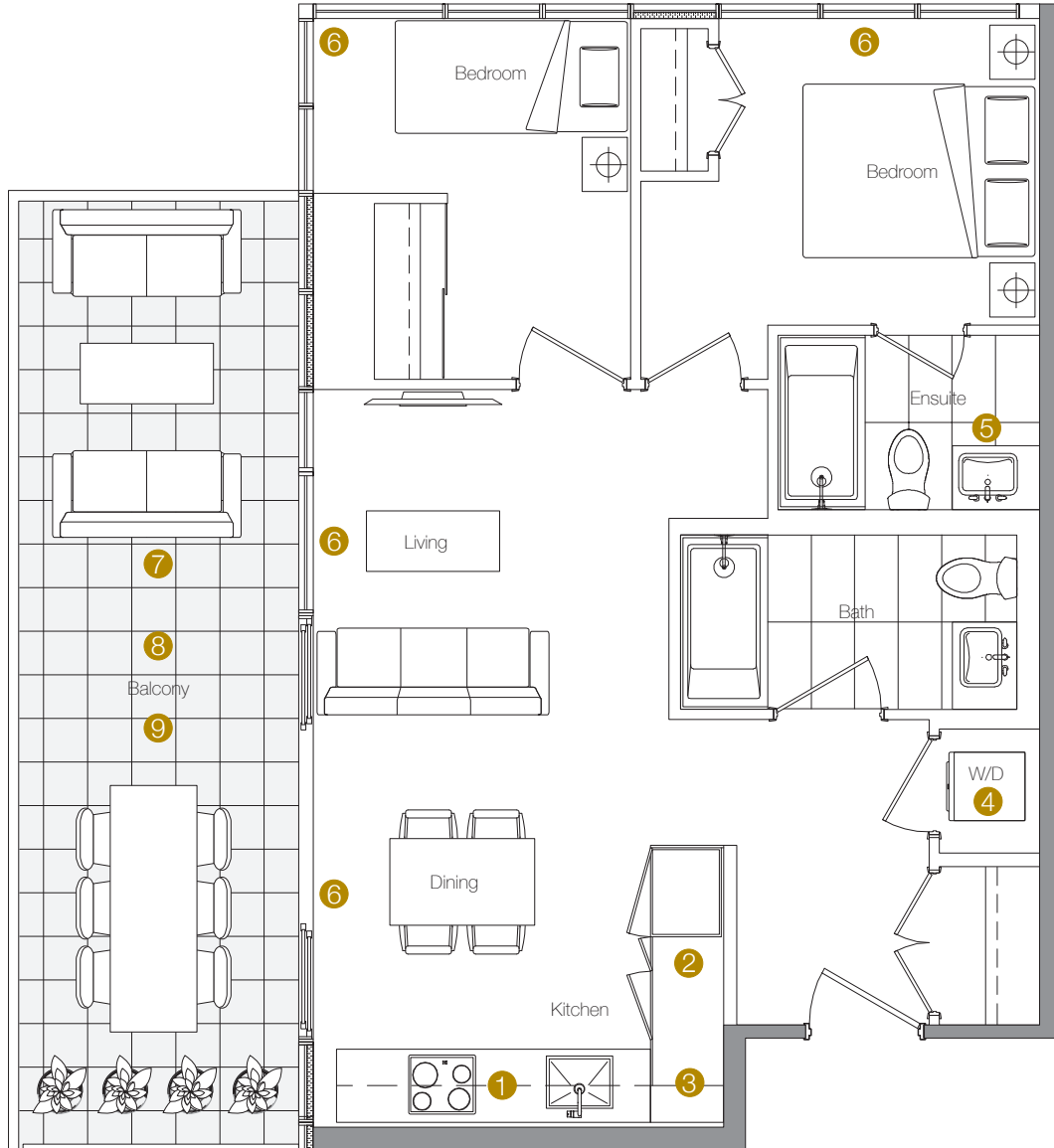
208 SQ.FT.
OUTDOOR AREA

Feature Highlights

- 1 Miele Appliances
- 2 Kitchen Storage Organizer
- 3 Blum Kitchen Hardware
- 4 Miele Washer/Dryer
- 5 Kohler/Grohe Bathroom Plumbing Fixtures
- 6 Roller - Shades
- 7 Composite Wood Decking
- 8 Radiant ceiling heaters
- 9 Wood-grain soffit ceiling treatment



The developer reserves the right to make minor revisions to interior wall locations and exterior window system. All materials and drawings are approximate. Information is subject to change without notice. Actual square footage may vary from the stated floorplan. Furniture and upgrades shown on plans are for illustration purposes only and are not included. E.&O.E.



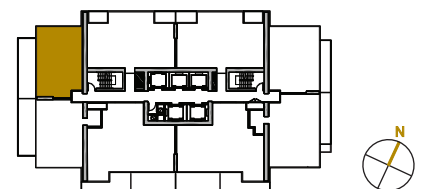
08

2 BEDROOM

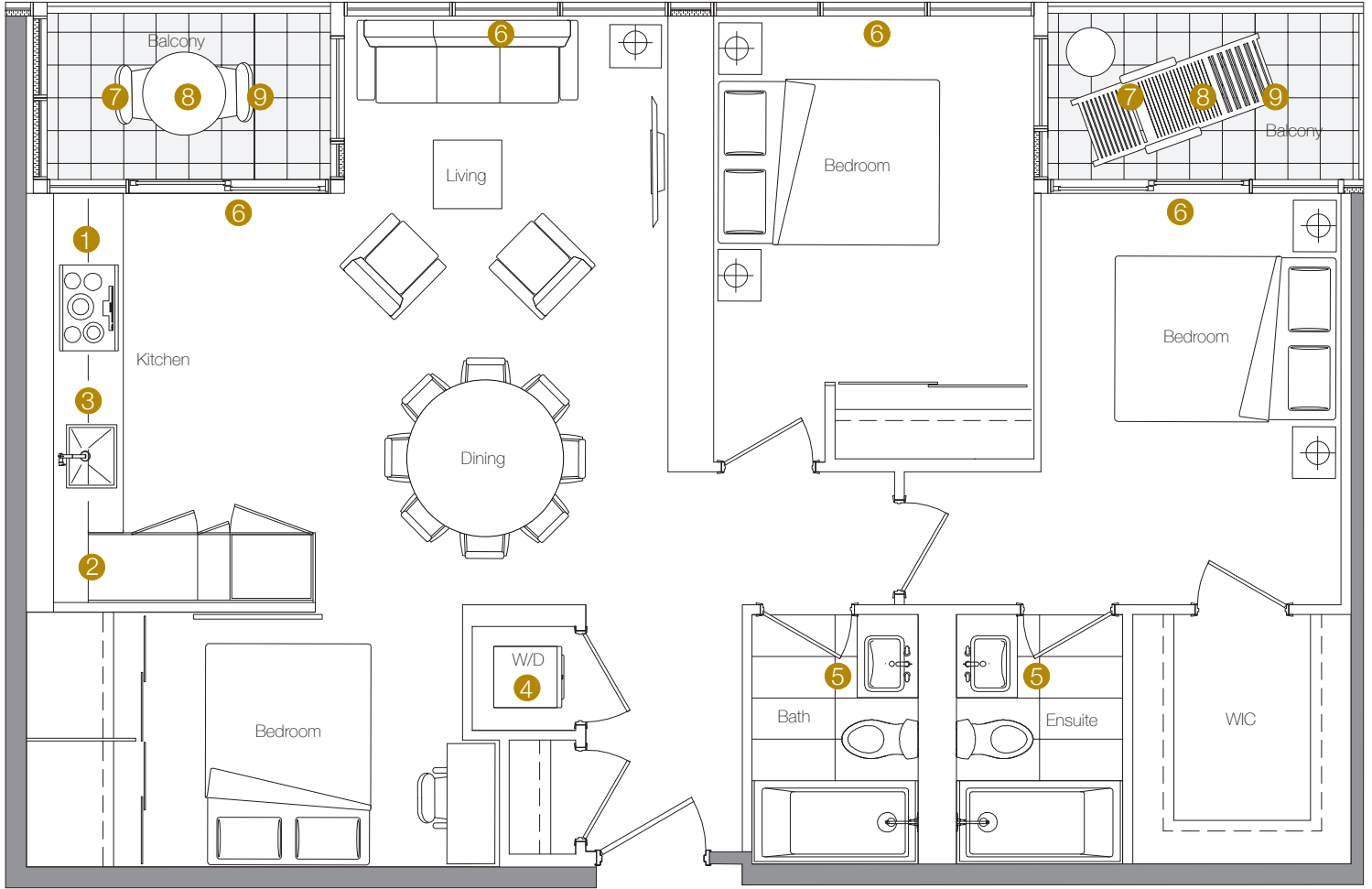
TOTAL AREA	935 SQ.FT.
718 SQ.FT. INDOOR AREA	217 SQ.FT. OUTDOOR AREA

Feature Highlights

- 1 Miele Appliances
- 2 Kitchen Storage Organizer
- 3 Blum Kitchen Hardware
- 4 Miele Washer/Dryer
- 5 Kohler/Grohe Bathroom Plumbing Fixtures
- 6 Roller - Shades
- 7 Composite Wood Decking
- 8 Radiant ceiling heaters
- 9 Wood-grain soffit ceiling treatment



The developer reserves the right to make minor revisions to interior wall locations and exterior window system. All materials and drawings are approximate. Information is subject to change without notice. Actual square footage may vary from the stated floorplan. Furniture and upgrades shown on plans are for illustration purposes only and are not included. E.&O.E.



09

3 BEDROOM

TOTAL AREA 1126 SQ.FT.

1038 SQ.FT.
INDOOR AREA

88 SQ.FT.
OUTDOOR AREA

Feature Highlights

- 1 Miele Appliances
- 2 Kitchen Storage Organizer
- 3 Blum Kitchen Hardware
- 4 Miele Washer/Dryer
- 5 Kohler/Grohe Bathroom Plumbing Fixtures
- 6 Roller - Shades
- 7 Composite Wood Decking
- 8 Radiant ceiling heaters
- 9 Wood-grain soffit ceiling treatment

