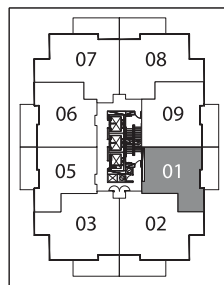


## Suite 01

Two Bedrooms

<b>TOTAL AREA</b>	<b>888 SQ.FT.</b>
750 SQ.FT. INDOOR AREA	138 SQ.FT. OUTDOOR AREA



East Tower: 28/F - 41/F  
West Tower: 26/F - 38/F

### Feature Highlights

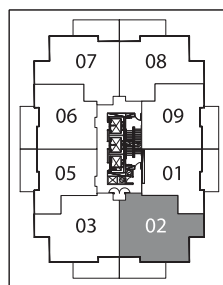
- 1 Miele Appliances
- 2 Kitchen Storage Organizer
- 3 Blum Kitchen Hardware
- 4 Miele Washer/Dryer
- 5 Kohler/Grohe Bathroom Plumbing Fixtures
- 6 Roller - Shades



## Suite 02

Three Bedrooms

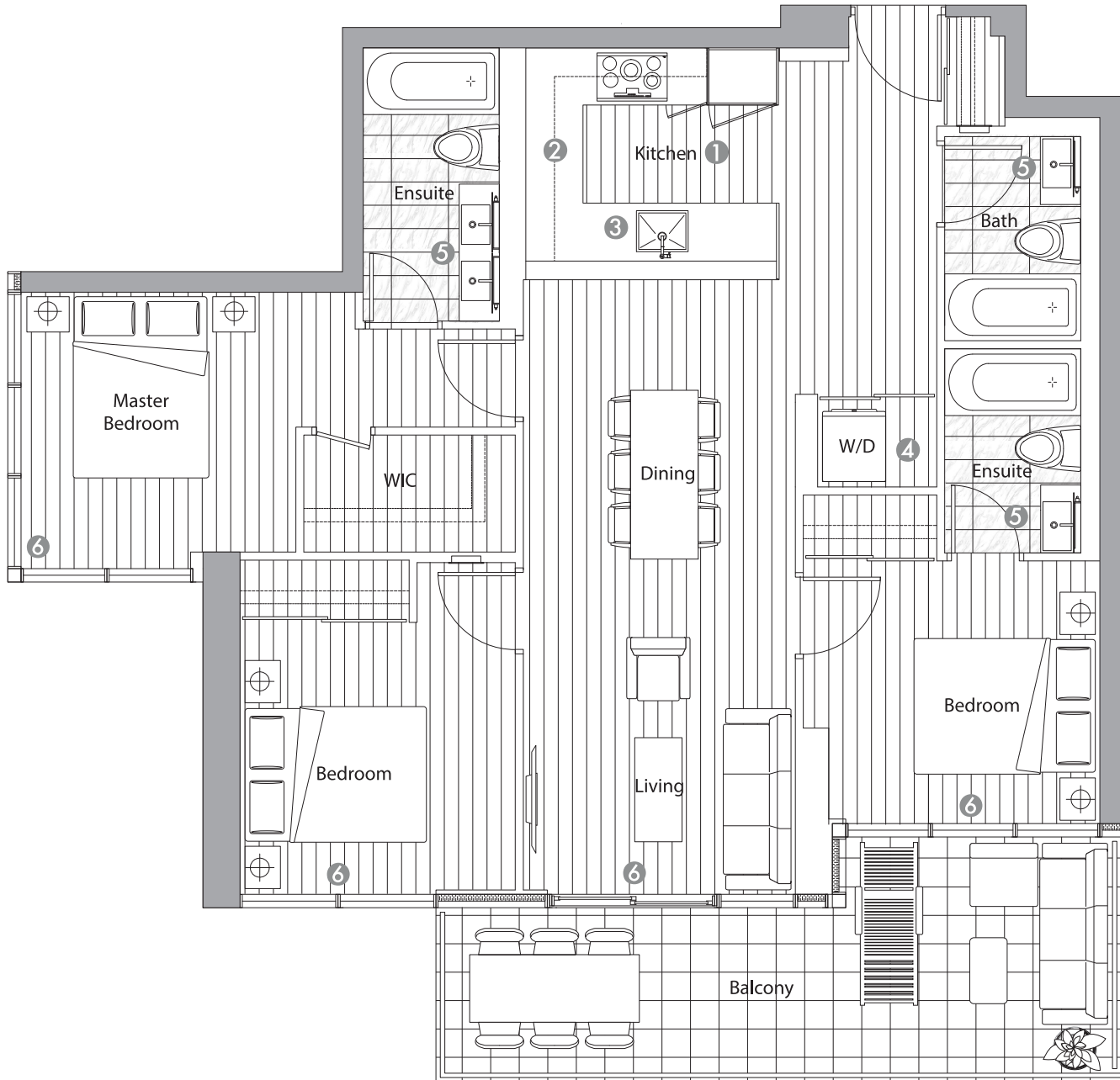
<b>TOTAL AREA</b>	<b>1265 SQ.FT.</b>
1090 SQ.FT. INDOOR AREA	175 SQ.FT. OUTDOOR AREA



East Tower: 28/F - 41/F  
West Tower: 26/F - 38/F

### Feature Highlights

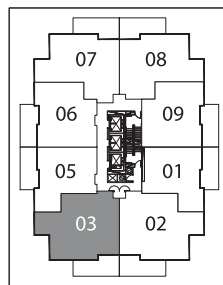
- 1 Miele Appliances
- 2 Kitchen Storage Organizer
- 3 Blum Kitchen Hardware
- 4 Miele Washer/Dryer
- 5 Kohler/Grohe Bathroom Plumbing Fixtures
- 6 Roller - Shades



## Suite 03

Three Bedrooms

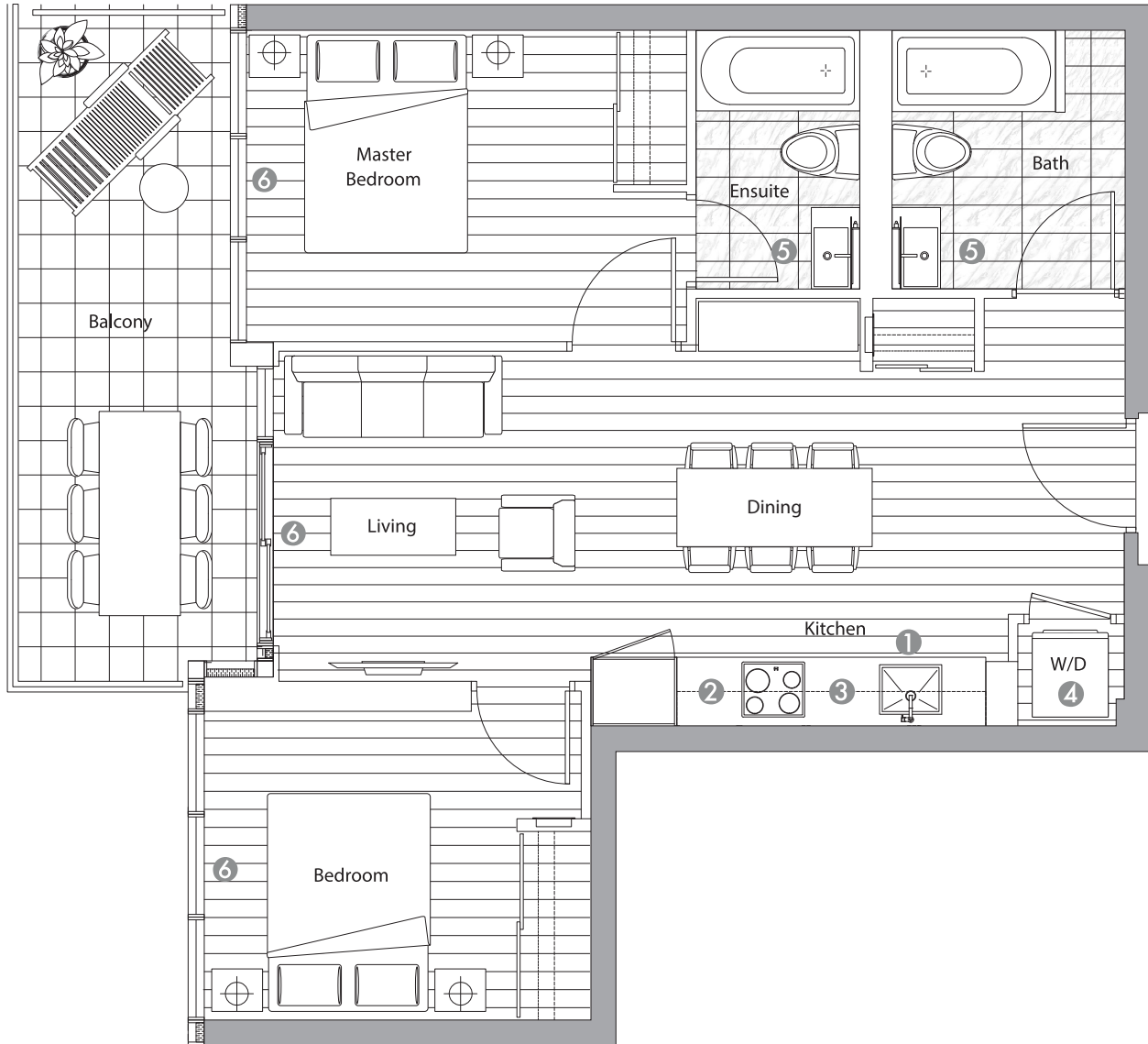
<b>TOTAL AREA</b>	<b>1265 SQ.FT.</b>
1090 SQ.FT. INDOOR AREA	175 SQ.FT. OUTDOOR AREA



East Tower: 28/F - 41/F  
West Tower: 26/F - 38/F

### Feature Highlights

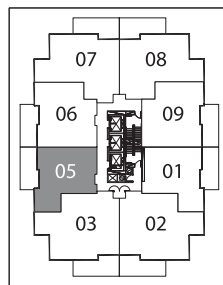
- 1 Miele Appliances
- 2 Kitchen Storage Organizer
- 3 Blum Kitchen Hardware
- 4 Miele Washer/Dryer
- 5 Kohler/Grohe Bathroom Plumbing Fixtures
- 6 Roller - Shades



## Suite 05

### Two Bedrooms

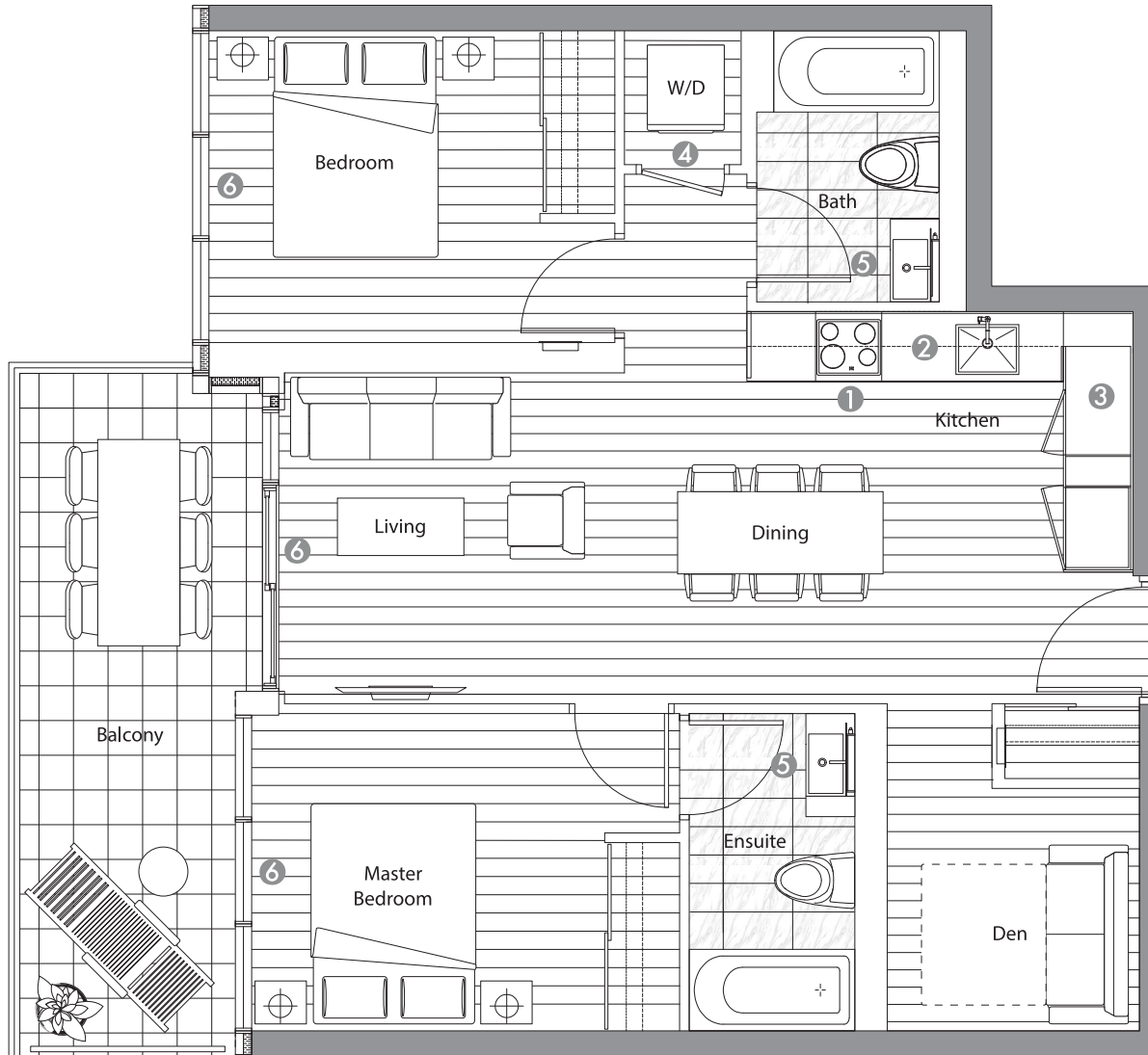
TOTAL AREA	888 SQ.FT.
750 SQ.FT. INDOOR AREA	138 SQ.FT. OUTDOOR AREA



East Tower: 28/F - 41/F  
 West Tower: 26/F - 38/F

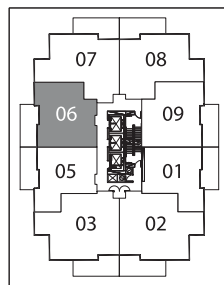
### Feature Highlights

- 1 Miele Appliances
- 2 Kitchen Storage Organizer
- 3 Blum Kitchen Hardware
- 4 Miele Washer/Dryer
- 5 Kohler/Grohe Bathroom Plumbing Fixtures
- 6 Roller - Shades



Suite 06  
Two Bedrooms + Den

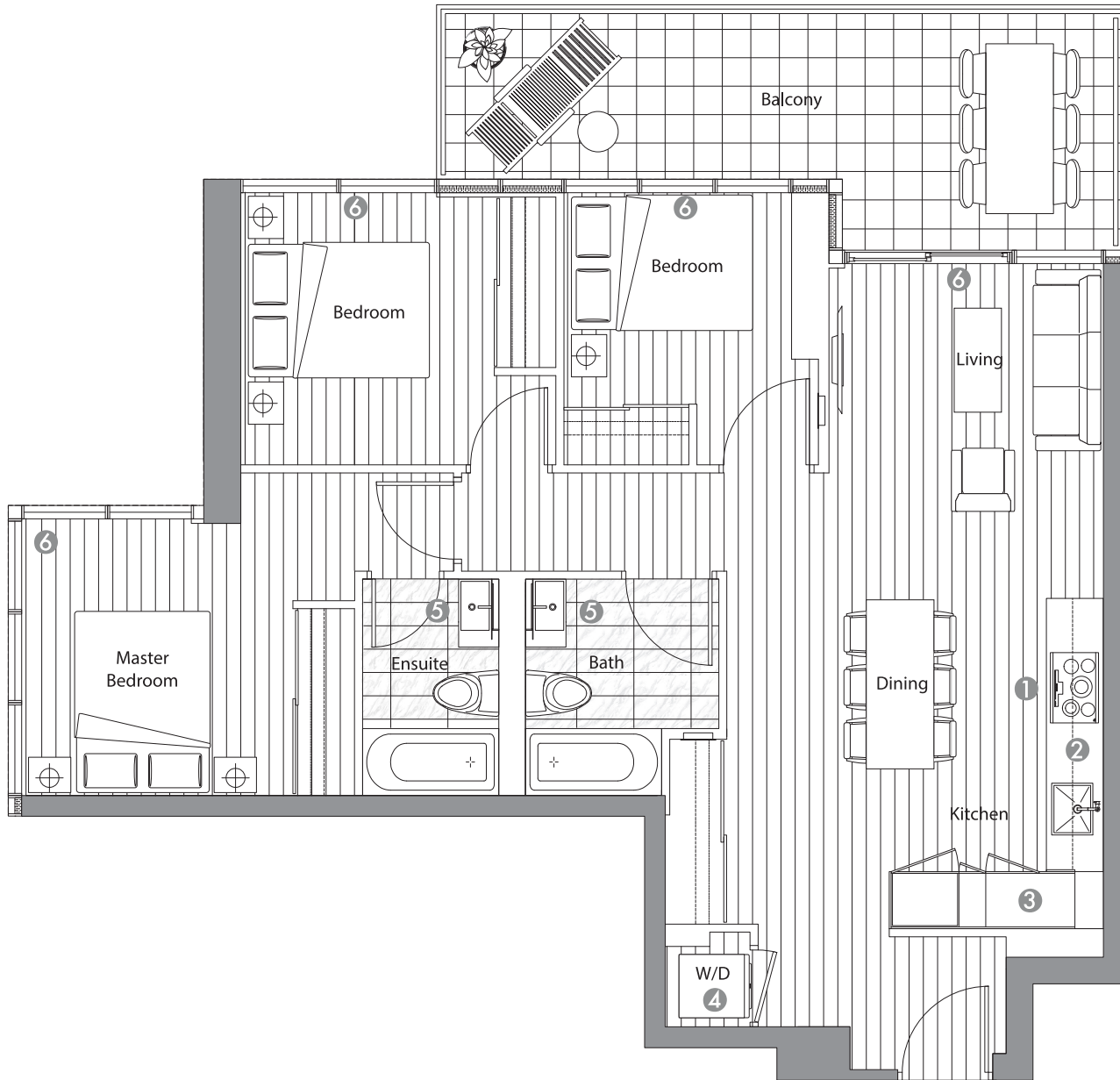
TOTAL AREA	988 SQ.FT.
850 SQ.FT. INDOOR AREA	138 SQ.FT. OUTDOOR AREA



East Tower: 28/F - 41/F  
West Tower: 26/F - 38/F

Feature Highlights

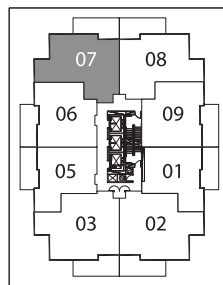
- 1 Miele Appliances
- 2 Kitchen Storage Organizer
- 3 Blum Kitchen Hardware
- 4 Miele Washer/Dryer
- 5 Kohler/Grohe Bathroom Plumbing Fixtures
- 6 Roller - Shades



## Suite 07

Three Bedrooms

<b>TOTAL AREA</b>	<b>1163 SQ.FT.</b>
988 SQ.FT. INDOOR AREA	175 SQ.FT. OUTDOOR AREA

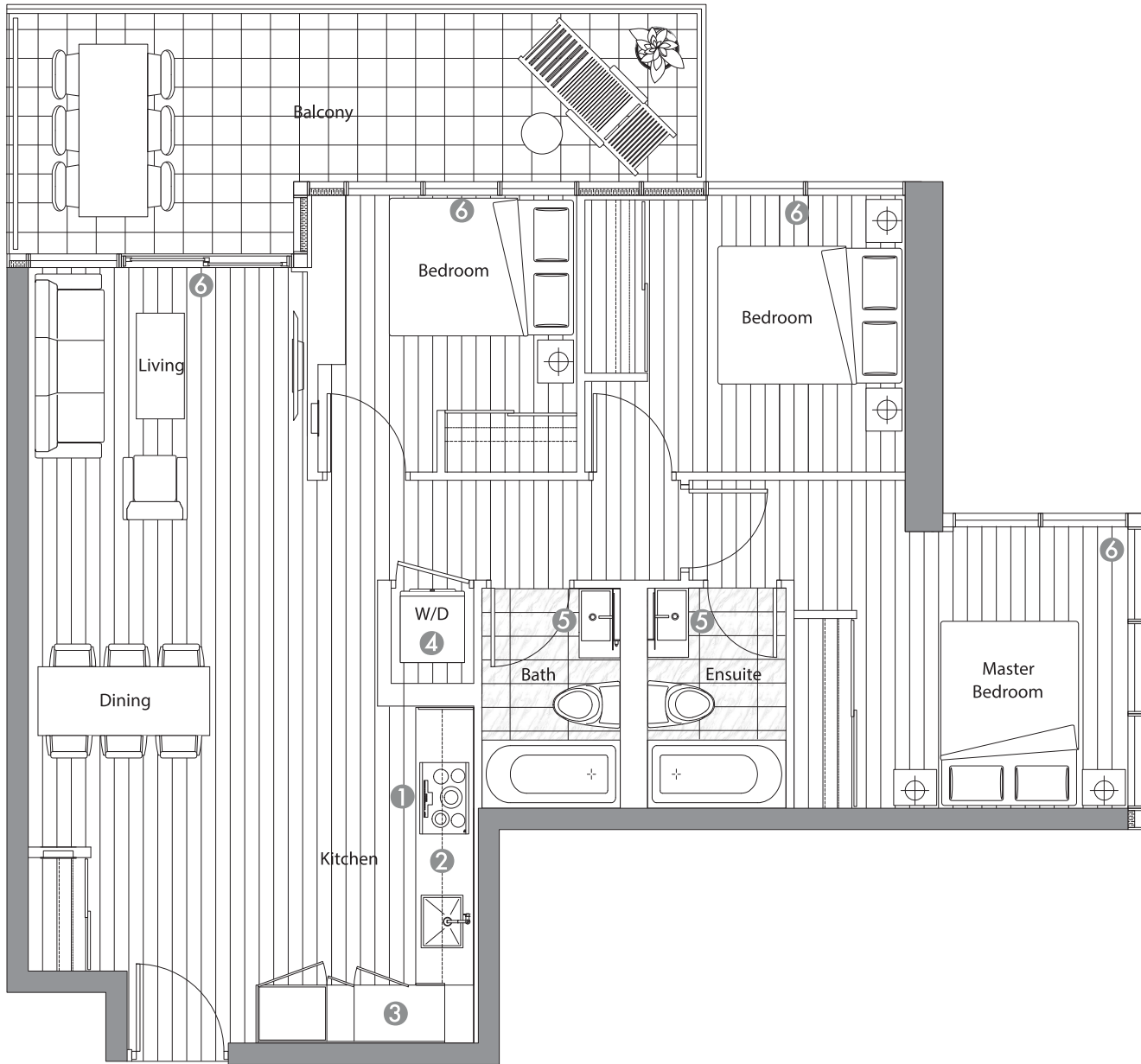


East Tower: 28/F - 41/F

West Tower: 26/F - 38/F

### Feature Highlights

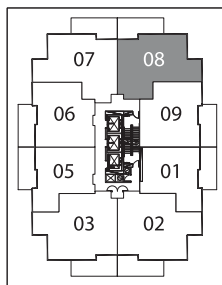
- 1 Miele Appliances
- 2 Kitchen Storage Organizer
- 3 Blum Kitchen Hardware
- 4 Miele Washer/Dryer
- 5 Kohler/Grohe Bathroom Plumbing Fixtures
- 6 Roller - Shades



## Suite 08

Three Bedrooms

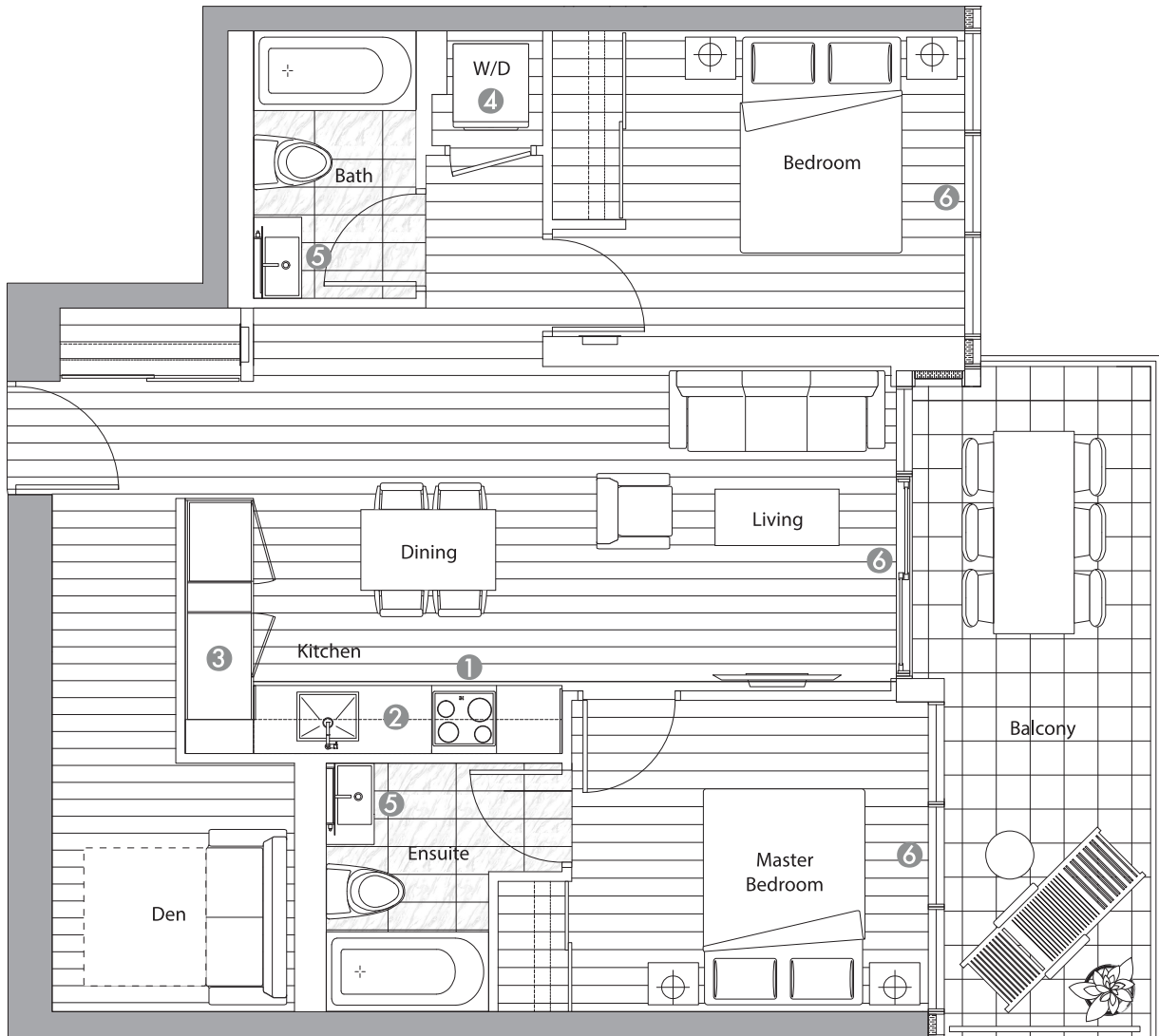
<b>TOTAL AREA</b>	<b>1150 SQ.FT.</b>
975 SQ.FT. INDOOR AREA	175 SQ.FT. OUTDOOR AREA



East Tower: 28/F - 41/F  
West Tower: 26/F - 38/F

### Feature Highlights

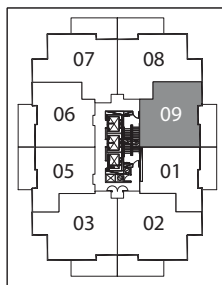
- 1 Miele Appliances
- 2 Kitchen Storage Organizer
- 3 Blum Kitchen Hardware
- 4 Miele Washer/Dryer
- 5 Kohler/Grohe Bathroom Plumbing Fixtures
- 6 Roller - Shades



## Suite 09

Two Bedrooms + Den

<b>TOTAL AREA</b>	<b>988 SQ.FT.</b>
850 SQ.FT. INDOOR AREA	138 SQ.FT. OUTDOOR AREA



East Tower: 28/F - 41/F

West Tower: 26/F - 38/F

### Feature Highlights

- 1 Miele Appliances
- 2 Kitchen Storage Organizer
- 3 Blum Kitchen Hardware
- 4 Miele Washer/Dryer
- 5 Kohler/Grohe Bathroom Plumbing Fixtures
- 6 Roller - Shades