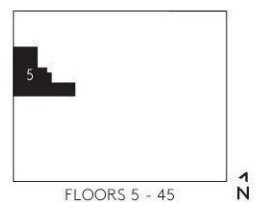
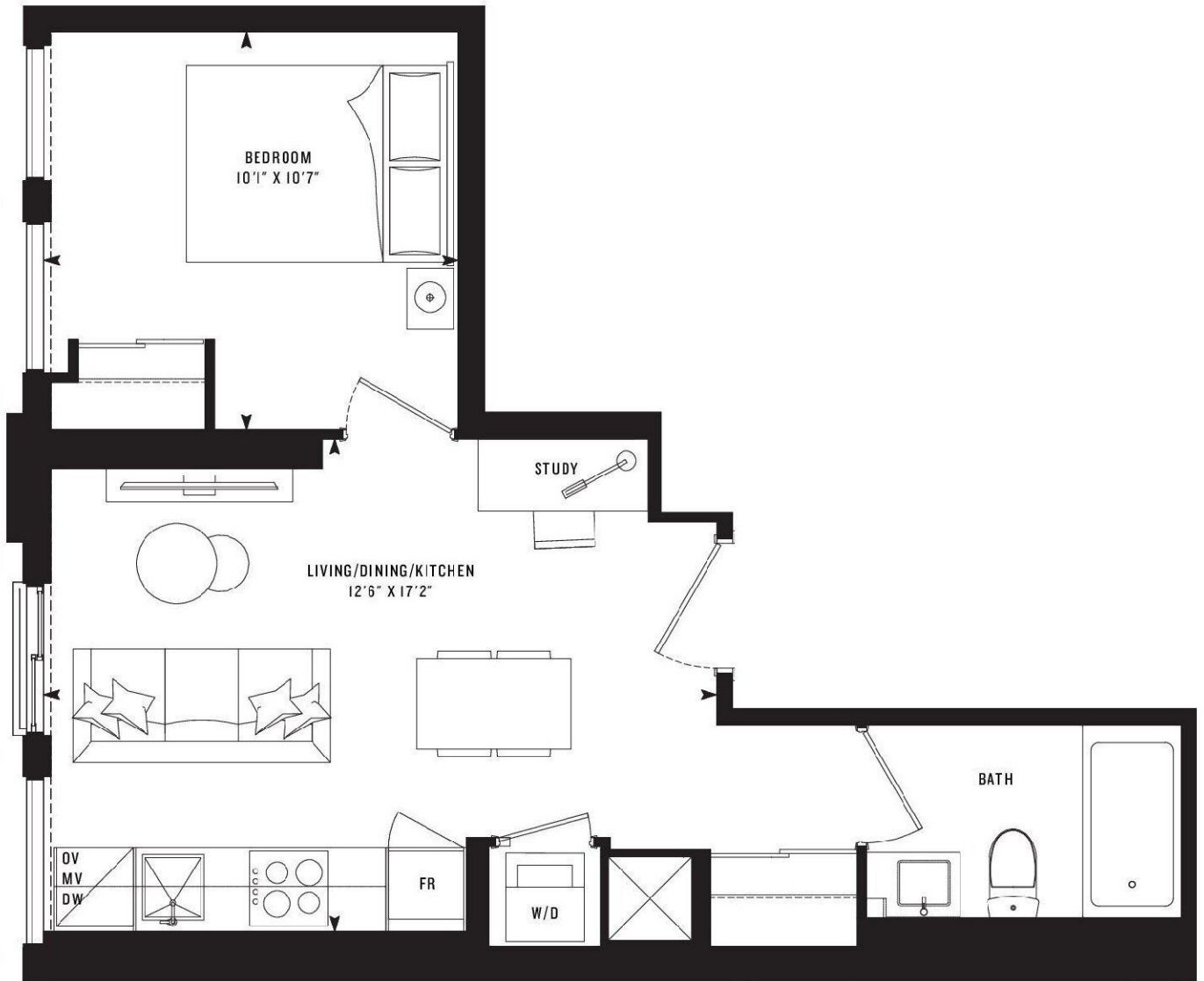


P
R
I
M
E

PRIME 443

One Bedroom
443 SF



Note: All prices, figures, sizes, specifications and information are subject to change without notice. E. & O.E. All areas and stated dimensions are approximate. Actual usable floor space, living area and square footage may vary from stated floor area. All illustrations are artist's concept only. The unit shown may be the reverse of the unit purchased. Exterior building elements may be visible from within unit, including but not limited to mullion/metal panel/masonry placement, or other visual treatments. The purchase price does not include any furniture. © 2020 CentreCourt Developments. All rights reserved.

10 YEARS
BUILDING
TORONTO'S
SKYLINE

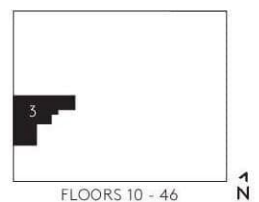
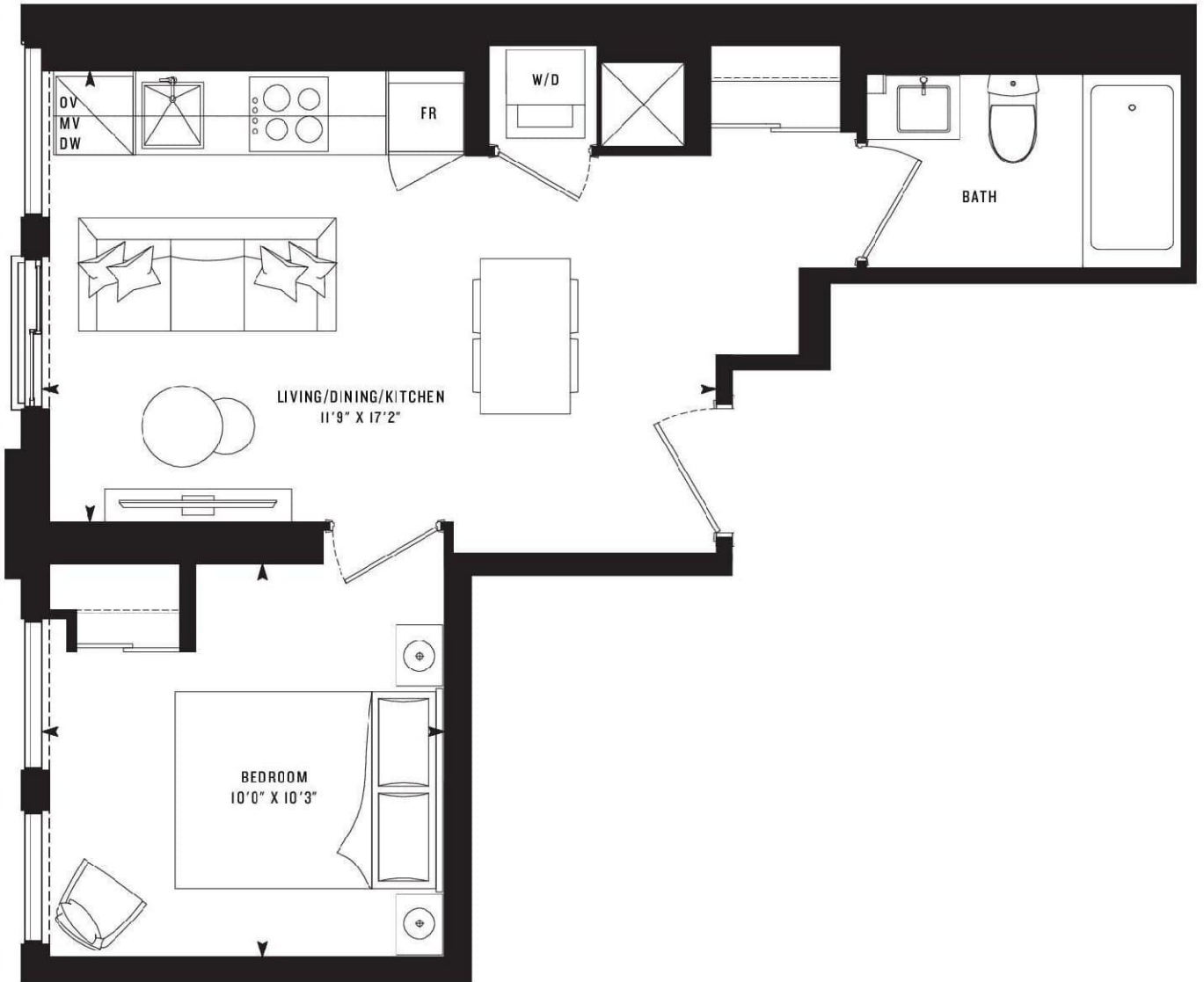
CENTRE COURT

CENTRE ONE

P
R
I
M
E

PRIME 450

One Bedroom
450 SF



Note: All prices, figures, sizes, specifications and information are subject to change without notice. E. & O.E. All areas and stated dimensions are approximate. Actual usable floor space, living area and square footage may vary from stated floor area. All illustrations are artist's concept only. The unit shown may be the reverse of the unit purchased. Exterior building elements may be visible from within unit, including but not limited to mullion/metal panel/masonry placement, or other visual treatments. The purchase price does not include any furniture. © 2020 CentreCourt Developments. All rights reserved.

10 YEARS
BUILDING
TORONTO'S
SKYLINE

CENTRE COURT

CENTRESTONE