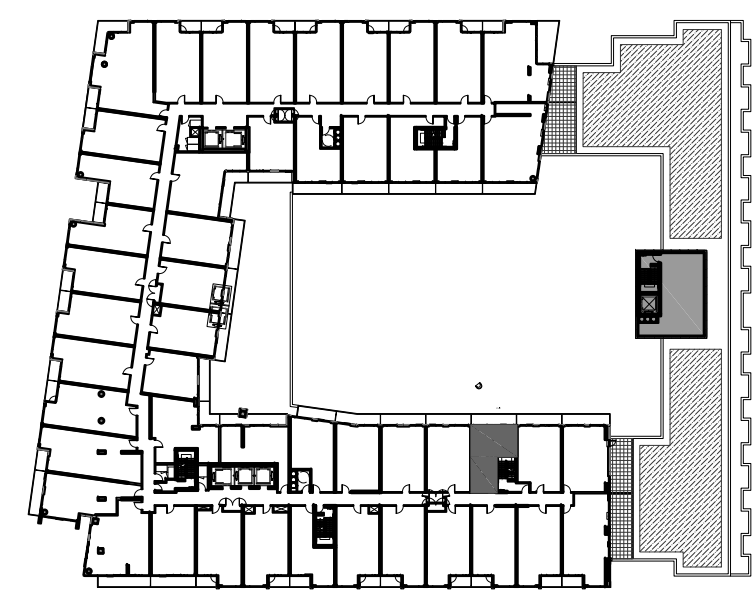
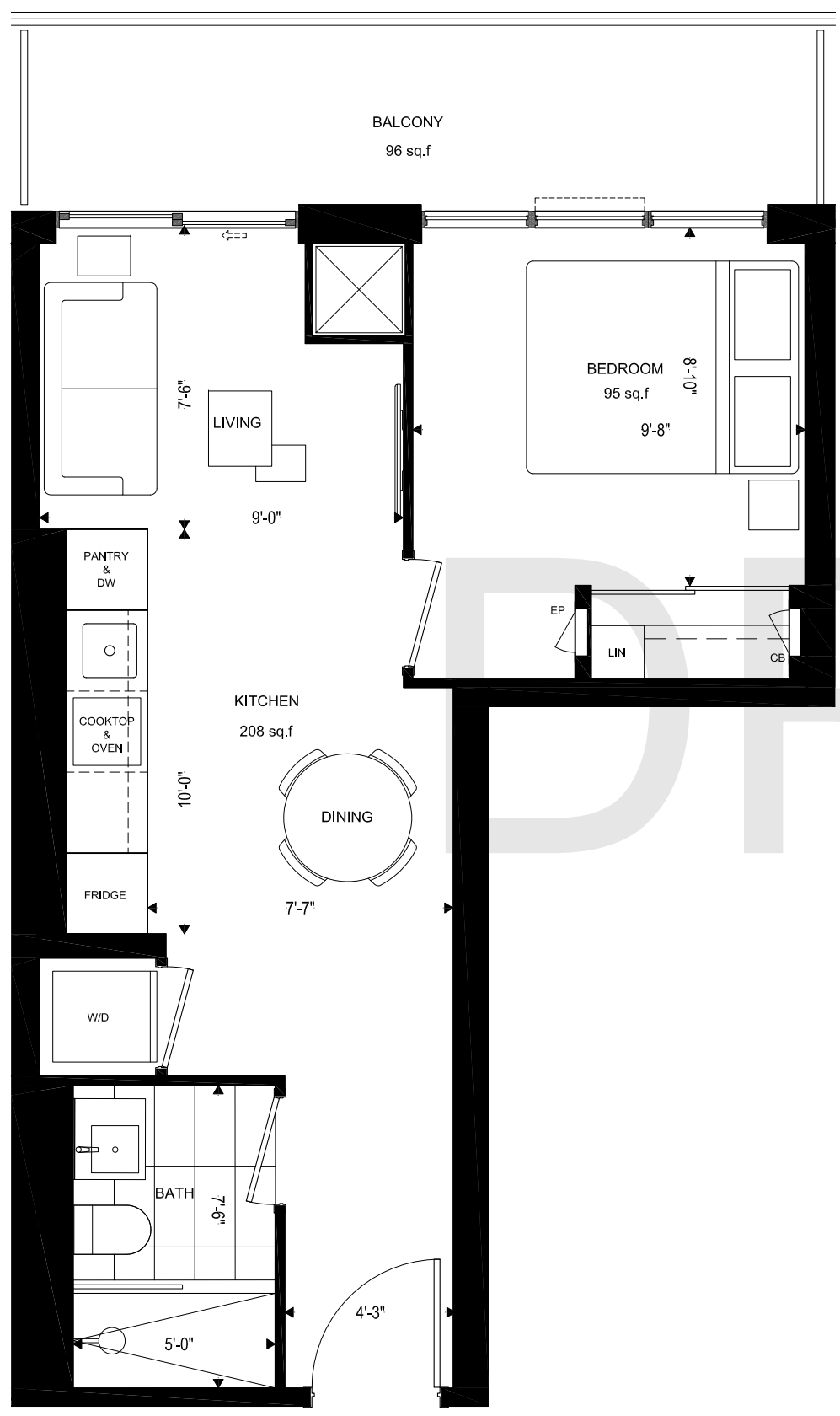


1. Copyright of this drawing is reserved by the Architect. The drawing, and all associated documents are instruments of service by the Architect. The drawing, and the information contained therein, may not be reproduced in whole or in part without prior written permission of the Architect.
2. These Contract Documents are the property of the Architect. The Architect bears no responsibility for the interpretation of these documents by the Contractor. Upon written application the Architect will provide written/graphic clarification or supplementary information regarding the intent of the Contract Documents. The Architect will review Shop Drawings submitted by the Contractor for design conformance only.
3. Drawings are not to be scaled for construction. The Contractor is to verify all existing conditions and dimensions required to perform the work and report and discrepancies with the Contract Documents to the Architect before commencing any work.
4. Positions of exposed finishes for mechanical or electrical devices, fitting and fixtures are indicated on architectural drawings. The location shown on the architectural drawing govern over the mechanical and electrical drawings. Those items not clearly located will be located as directed by the Architect.
5. These drawings are not to be used for construction unless noted below as "Issued for Construction".
6. All work is to be carried out in conformance with the Code and Bylaws of the Authorities having jurisdiction.
7. The Architect of these plans and specifications gives no warranty or representation to any party about the constructability of the building(s) represented by them. All contractors or subcontractors must satisfy themselves when bidding and at all times ensure that they can properly construct the work represented by these plans.

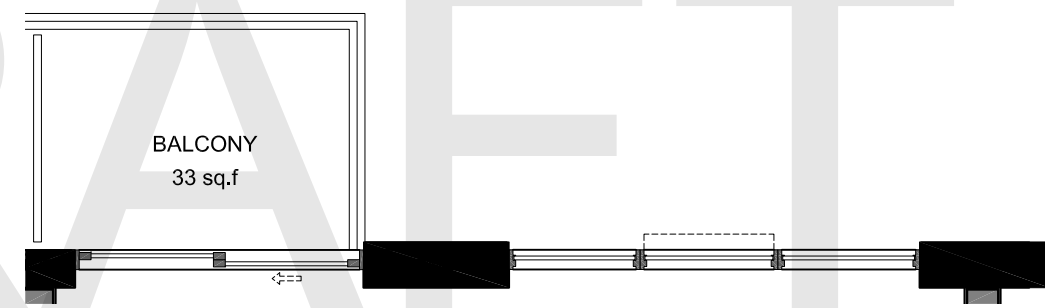
No.	Issuance	Date
1	Client Review	



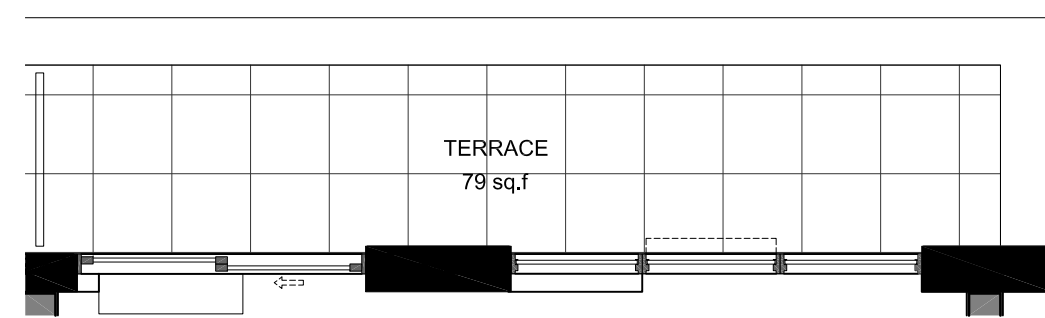
KEY PLAN - L03-05



PLAN - L04



PLAN - L05



PLAN - L03

**1BR**  
**440 sq.f**

**WALLMANARCHITECTS**

117 Peter Street, Suite 208  
 Toronto, Ontario M5V 2G9  
 t 416 340 1870  
 f 416 340 1871  
 info@wallmanarchitects.com

project north



project

**9825 YONGE STREET**

RICHMOND HILL, ONTARIO

client  
**METROVIEW DEVELOPMENTS**

title  
**1BR**

project number  
 18-13

date  
 August 27, 2021

scale  
 1:48

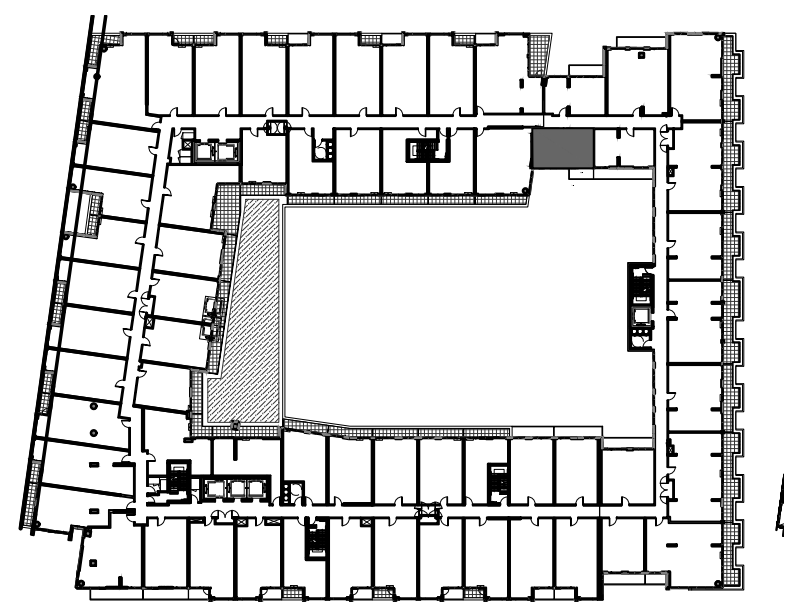
drawn by

sheet

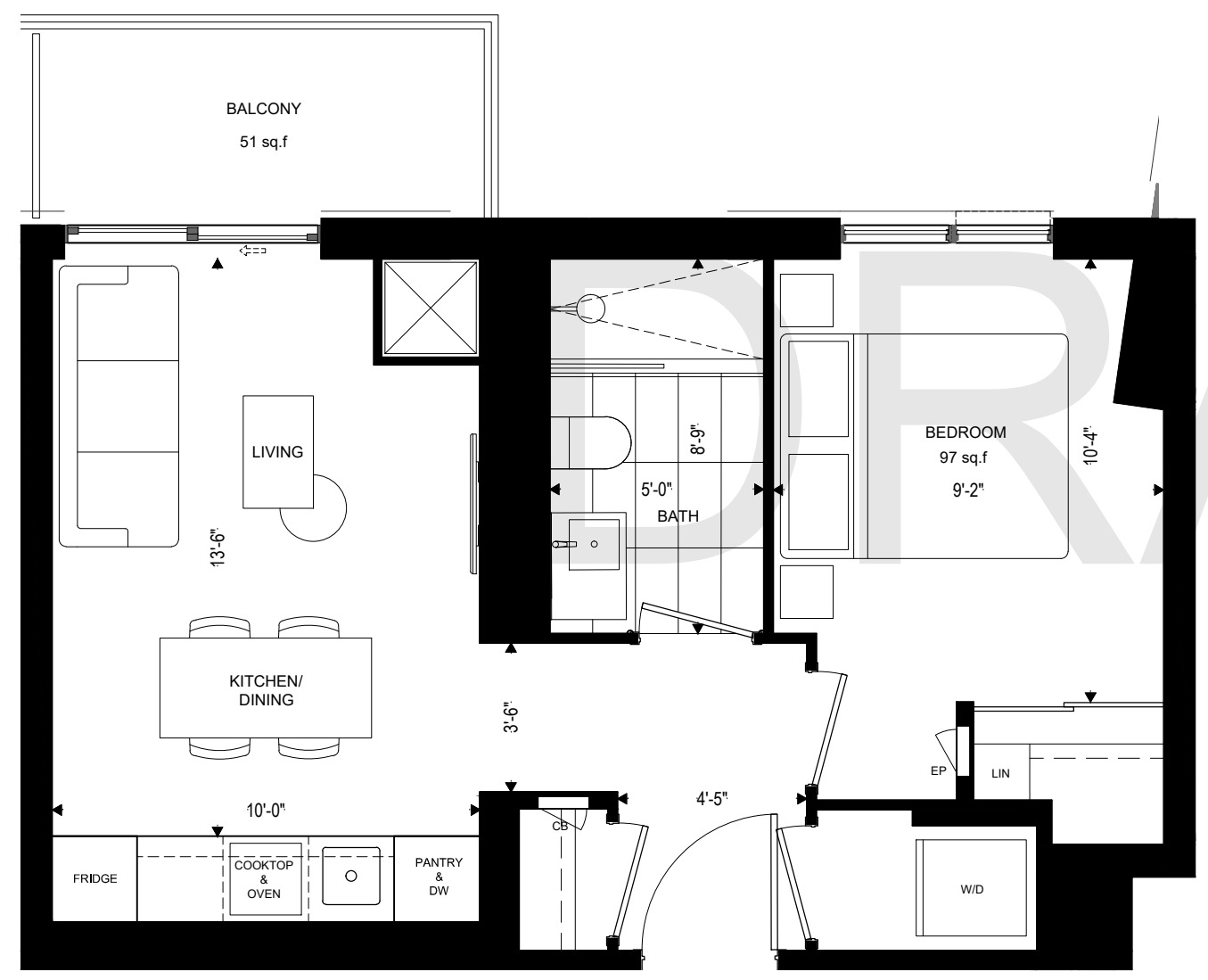
**UNIT 05**

1. Copyright of this drawing is reserved by the Architect. The drawing, and all associated documents are instruments of service by the Architect. The drawing, and the information contained therein, may not be reproduced in whole or in part without prior written permission of the Architect.
2. These Contract Documents are the property of the Architect. The Architect bears no responsibility for the interpretation of these documents by the Contractor. Upon written application the Architect will provide written/graphic clarification or supplementary information regarding the intent of the Contract Documents. The Architect will review Shop Drawings submitted by the Contractor for design conformance only.
3. Drawings are not to be scaled for construction. The Contractor is to verify all existing conditions and dimensions required to perform the work and report and discrepancies with the Contract Documents to the Architect before commencing any work.
4. Positions of exposed finishes for mechanical or electrical devices, fitting and fixtures are indicated on architectural drawings. The location shown on the architectural drawing govern over the mechanical and electrical drawings. Those items not clearly located will be located as directed by the Architect.
5. These drawings are not to be used for construction unless noted below as "Issued for Construction".
6. All work is to be carried out in conformance with the Code and Bylaws of the Authorities having jurisdiction.
7. The Architect of these plans and specifications gives no warranty or representation to any party about the constructability of the building(s) represented by them. All contractors or subcontractors must satisfy themselves when bidding and at all times ensure that they can properly construct the work represented by these plans.

No.	Issuance	Date
1	Client Review	



KEY PLAN - L02-L03



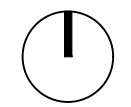
PLAN - L02-03

**1BR**  
461 sq.f

**WALLMANARCHITECTS**

117 Peter Street, Suite 208  
 Toronto, Ontario M5V 2G9  
 t 416 340 1870  
 f 416 340 1871  
 info@wallmanarchitects.com

project north



project

**9825 YONGE STREET**

RICHMOND HILL, ONTARIO

client

**METROVIEW DEVELOPMENTS**

title

**1BR**

project number

18-13

date

September 02, 2021

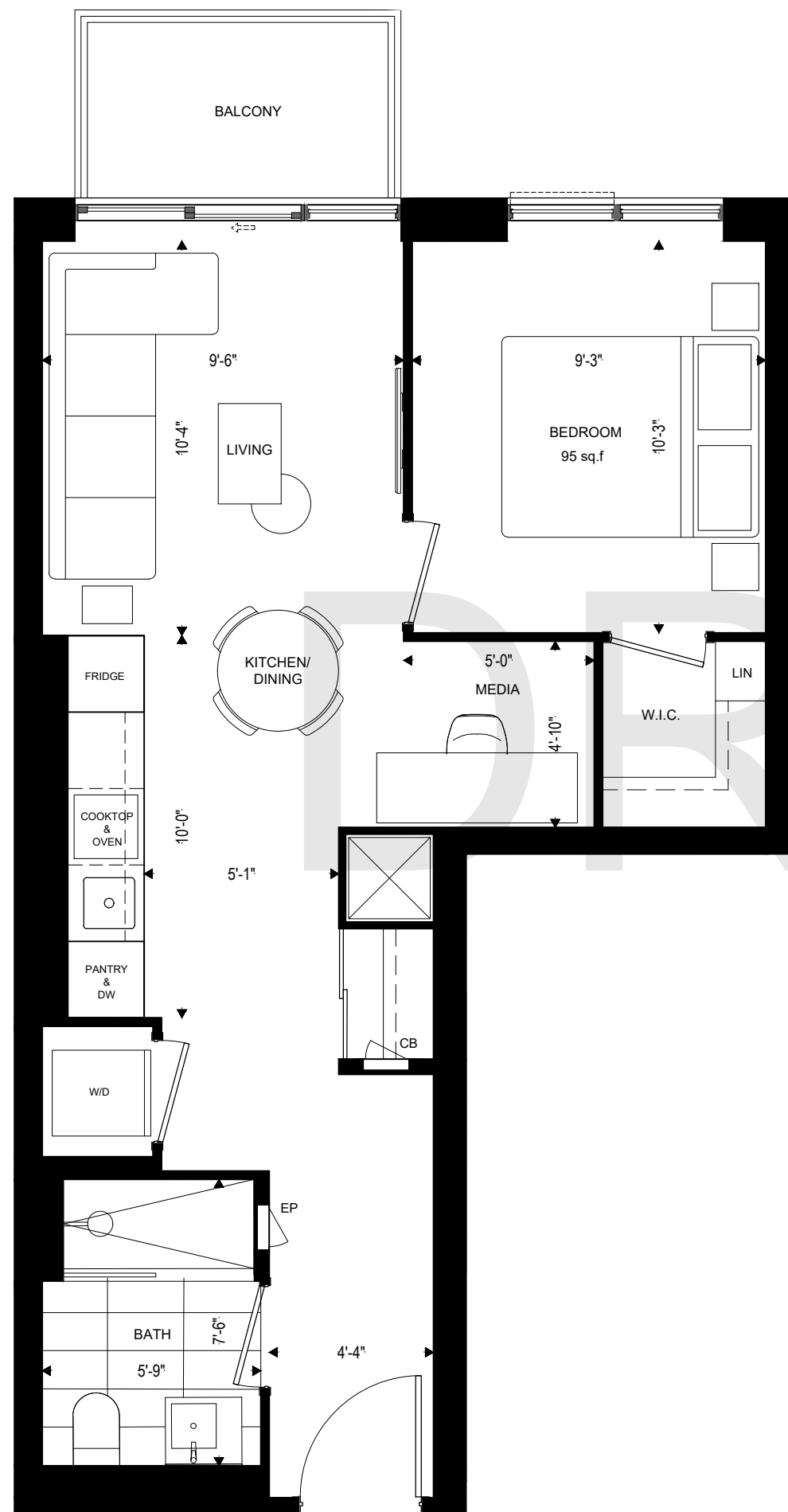
scale

1:48

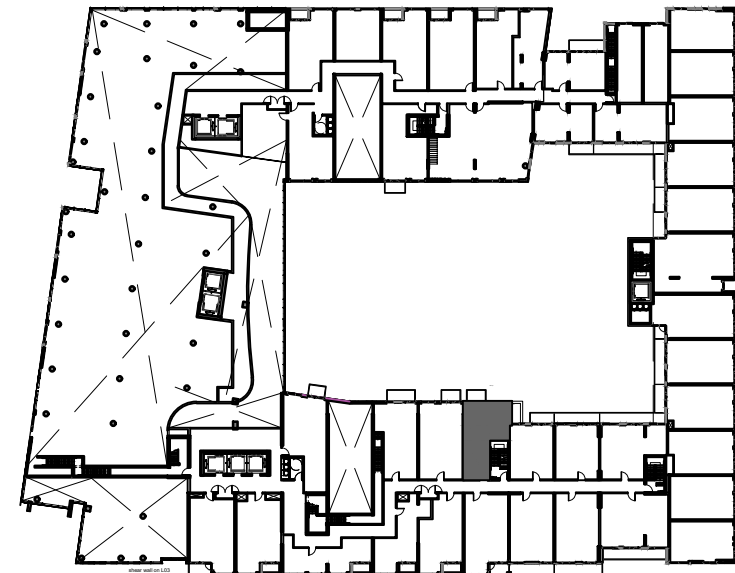
drawn by

sheet

**UNIT 07**



PLAN - L02



KEY PLAN - L02

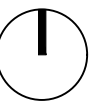
1. Copyright of this drawing is reserved by the Architect. The drawing, and all associated documents are instruments of service by the Architect. The drawing, and the information contained therein, may not be reproduced in whole or in part without prior written permission of the Architect.
2. These Contract Documents are the property of the Architect. The Architect bears no responsibility for the interpretation of these documents by the Contractor. Upon written application the Architect will provide written/graphic clarification or supplementary information regarding the intent of the Contract Documents. The Architect will review Shop Drawings submitted by the Contractor for design conformance only.
3. Drawings are not to be scaled for construction. The Contractor is to verify all existing conditions and dimensions required to perform the work and report and discrepancies with the Contract Documents to the Architect before commencing any work.
4. Positions of exposed finishes for mechanical or electrical devices, fitting and fixtures are indicated on architectural drawings. The location shown on the architectural drawing govern over the mechanical and electrical drawings. Those items not clearly located will be located as directed by the Architect.
5. These drawings are not to be used for construction unless noted below as "Issued for Construction".
6. All work is to be carried out in conformance with the Code and Bylaws of the Authorities having jurisdiction.
7. The Architect of these plans and specifications gives no warranty or representation to any party about the constructability of the building(s) represented by them. All contractors or subcontractors must satisfy themselves when bidding and at all times ensure that they can properly construct the work represented by these plans.

No.	Issuance	Date
1	Client Review	

**WALLMANARCHITECTS**

117 Peter Street, Suite 208  
 Toronto, Ontario M5V 2G9  
 t 416 340 1870  
 f 416 340 1871  
 info@wallmanarchitects.com

project north



project

9825 YONGE STREET

RICHMOND HILL, ONTARIO

client

METROVIEW DEVELOPMENTS

title

1BR+M

project number

18-13

date

August 27, 2021

scale

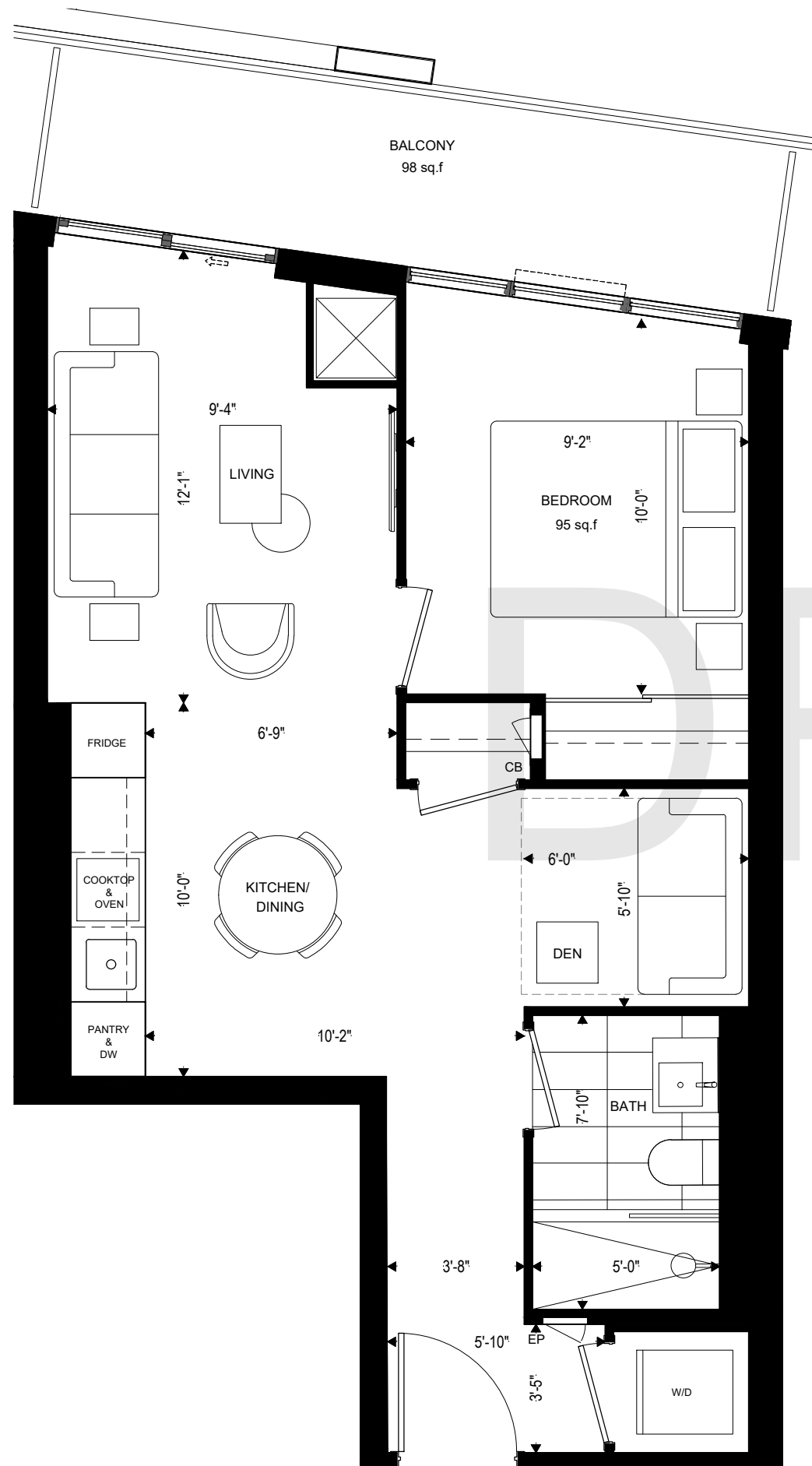
1:48

drawn by

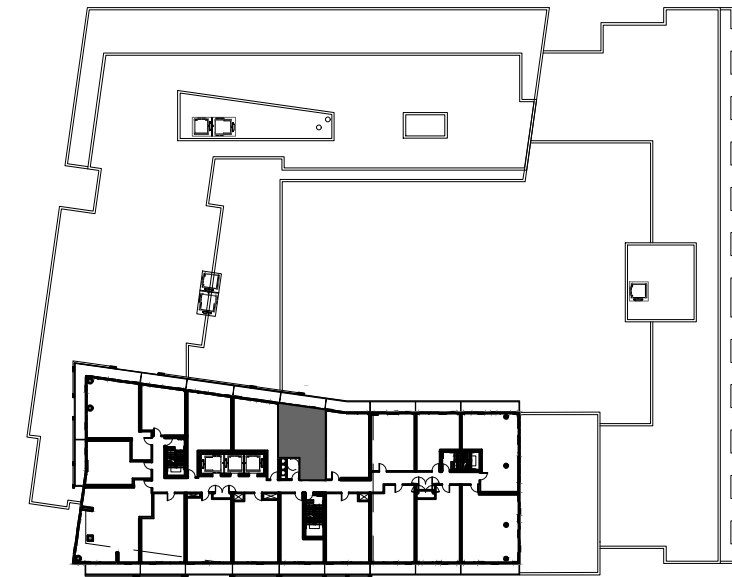
sheet

**1BR+M**  
**549 sq.f**

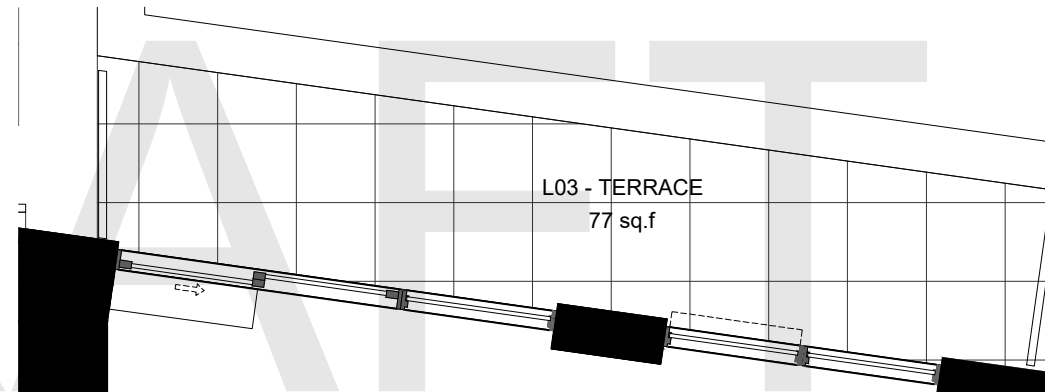
**UNIT 27**



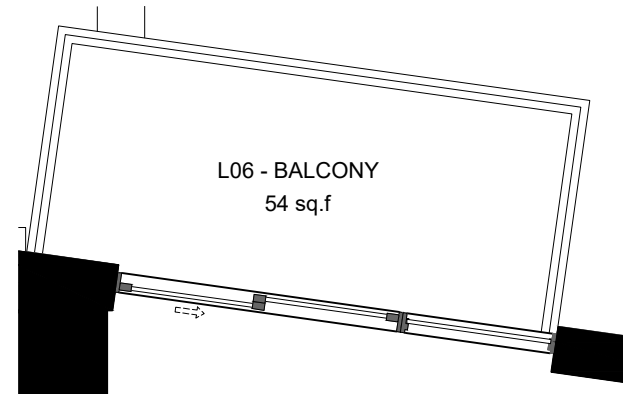
PLAN - L04-05, L08



KEY PLAN - L03-06, L08



PLAN - L03



PLAN - L06

**1BR+D**  
**548 sq.f**

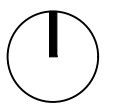
1. Copyright of this drawing is reserved by the Architect. The drawing, and all associated documents are instruments of service by the Architect. The drawing, and the information contained therein, may not be reproduced in whole or in part without prior written permission of the Architect.
2. These Contract Documents are the property of the Architect. The Architect bears no responsibility for the interpretation of these documents by the Contractor. Upon written application the Architect will provide written/graphic clarification or supplementary information regarding the intent of the Contract Documents. The Architect will review Shop Drawings submitted by the Contractor for design conformance only.
3. Drawings are not to be scaled for construction. The Contractor is to verify all existing conditions and dimensions required to perform the work and report and discrepancies with the Contract Documents to the Architect before commencing any work.
4. Positions of exposed finishes for mechanical or electrical devices, fitting and fixtures are indicated on architectural drawings. The location shown on the architectural drawing govern over the mechanical and electrical drawings. Those items not clearly located will be located as directed by the Architect.
5. These drawings are not to be used for construction unless noted below as "Issued for Construction".
6. All work is to be carried out in conformance with the Code and Bylaws of the Authorities having jurisdiction.
7. The Architect of these plans and specifications gives no warranty or representation to any party about the constructability of the building(s) represented by them. All contractors or subcontractors must satisfy themselves when bidding and at all times ensure that they can properly construct the work represented by these plans.

No.	Issuance	Date
1	Client Review	

**WALLMANARCHITECTS**

117 Peter Street, Suite 208  
 Toronto, Ontario M5V 2G9  
 t 416 340 1870  
 f 416 340 1871  
 info@wallmanarchitects.com

project north



project

**9825 YONGE STREET**

RICHMOND HILL, ONTARIO

client

**METROVIEW DEVELOPMENTS**

title

**1BR+D**

project number

18-13

date

August 27, 2021

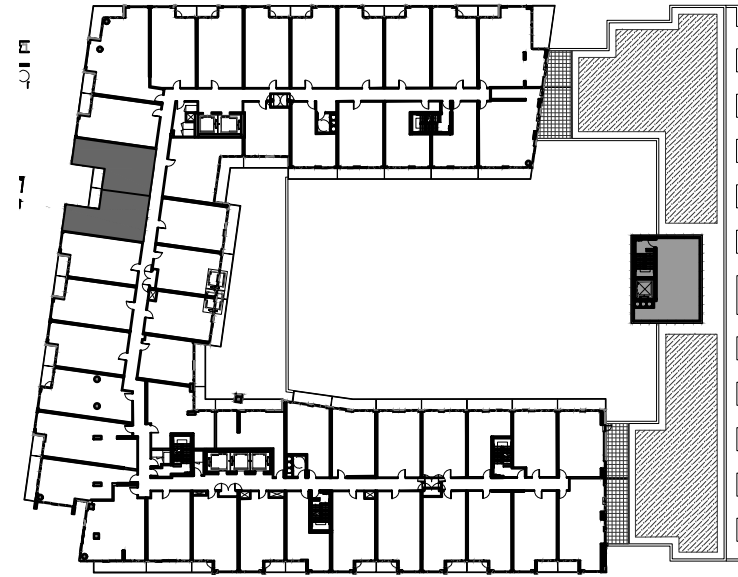
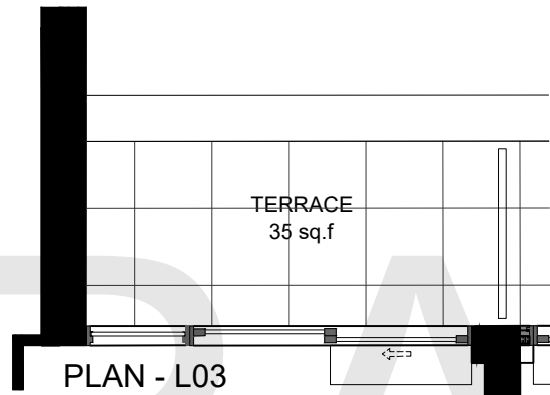
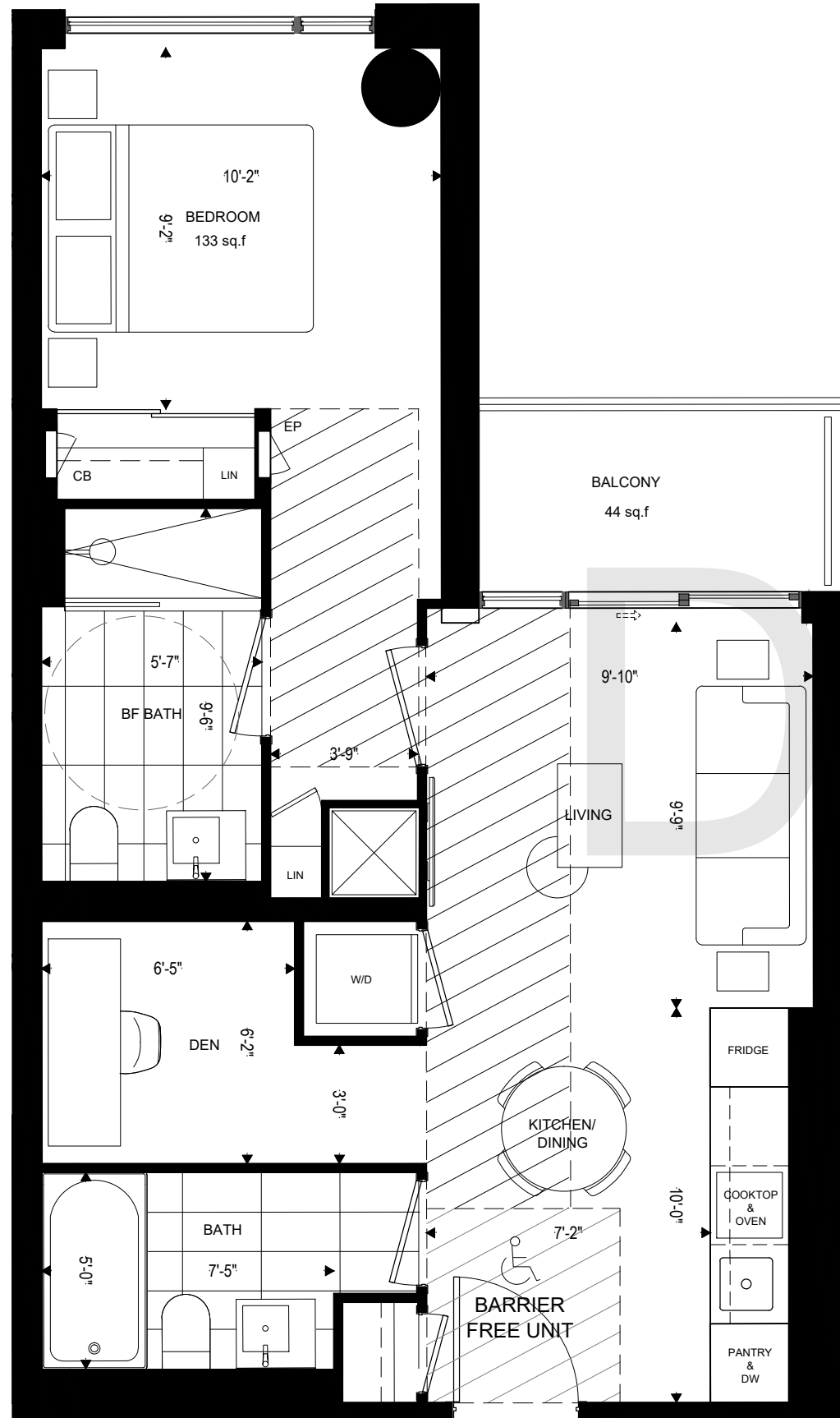
scale

1:48

drawn by

sheet

**UNIT 32**



**1BR+D**  
**597 sq.f**

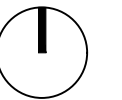
1. Copyright of this drawing is reserved by the Architect. The drawing, and all associated documents are instruments of service by the Architect. The drawing, and the information contained therein, may not be reproduced in whole or in part without prior written permission of the Architect.
2. These Contract Documents are the property of the Architect. The Architect bears no responsibility for the interpretation of these documents by the Contractor. Upon written application the Architect will provide written/graphic clarification or supplementary information regarding the intent of the Contract Documents. The Architect will review Shop Drawings submitted by the Contractor for design conformance only.
3. Drawings are not to be scaled for construction. The Contractor is to verify all existing conditions and dimensions required to perform the work and report and discrepancies with the Contract Documents to the Architect before commencing any work.
4. Positions of exposed finishes for mechanical or electrical devised, fitting and fixtures are indicated on architectural drawings. The location shown on the architectural drawing govern over the mechanical and electrical drawings. Those items not clearly located will be located as directed by the Architect.
5. These drawings are not to be used for construction unless noted below as "Issued for Construction".
6. All work is to be carried out in conformance with the Code and Bylaws of the Authorities having jurisdiction.
7. The Architect of these plans and specifications gives no warranty or representation to any party about the constructability of the building(s) represented by them. All contractors or subcontractors must satisfy themselves when bidding and at all times ensure that they can properly construct the work represented by these plans.

No.	Issuance	Date
1	Client Review	

**WALLMANARCHITECTS**

117 Peter Street, Suite 208  
Toronto, Ontario M5V 2G9  
t 416 340 1870  
f 416 340 1871  
info@wallmanarchitects.com

project north



project

**9825 YONGE STREET**

RICHMOND HILL, ONTARIO

client

**METROVIEW DEVELOPMENTS**

title

**1BR+D**

project number

18-13

date

August 27, 2021

scale

1:48

drawn by

sheet

**UNIT 36 - BF**

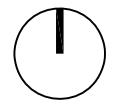
1. Copyright of this drawing is reserved by the Architect. The drawing, and all associated documents are instruments of service by the Architect. The drawing, and the information contained therein, may not be reproduced in whole or in part without prior written permission of the Architect.
2. These Contract Documents are the property of the Architect. The Architect bears no responsibility for the interpretation of these documents by the Contractor. Upon written application the Architect will provide written/graphic clarification or supplementary information regarding the intent of the Contract Documents. The Architect will review Shop Drawings submitted by the Contractor for design conformance only.
3. Drawings are not to be scaled for construction. The Contractor is to verify all existing conditions and dimensions required to perform the work and report and discrepancies with the Contract Documents to the Architect before commencing any work.
4. Positions of exposed finishes for mechanical or electrical devices, fitting and fixtures are indicated on architectural drawings. The location shown on the architectural drawing govern over the mechanical and electrical drawings. Those items not clearly located will be located as directed by the Architect.
5. These drawings are not to be used for construction unless noted below as "Issued for Construction".
6. All work is to be carried out in conformance with the Code and Bylaws of the Authorities having jurisdiction.
7. The Architect of these plans and specifications gives no warranty or representation to any party about the constructability of the building(s) represented by them. All contractors or subcontractors must satisfy themselves when bidding and at all times ensure that they can properly construct the work represented by these plans.

No.	Issuance	Date
1	Client Review	

**WALLMANARCHITECTS**

117 Peter Street, Suite 208  
 Toronto, Ontario M5V 2G9  
 t 416 340 1870  
 f 416 340 1871  
 info@wallmanarchitects.com

project north



project

**9825 YONGE STREET**

RICHMOND HILL, ONTARIO

client  
**METROVIEW DEVELOPMENTS**

title  
**1BR+F**

project number  
 18-13

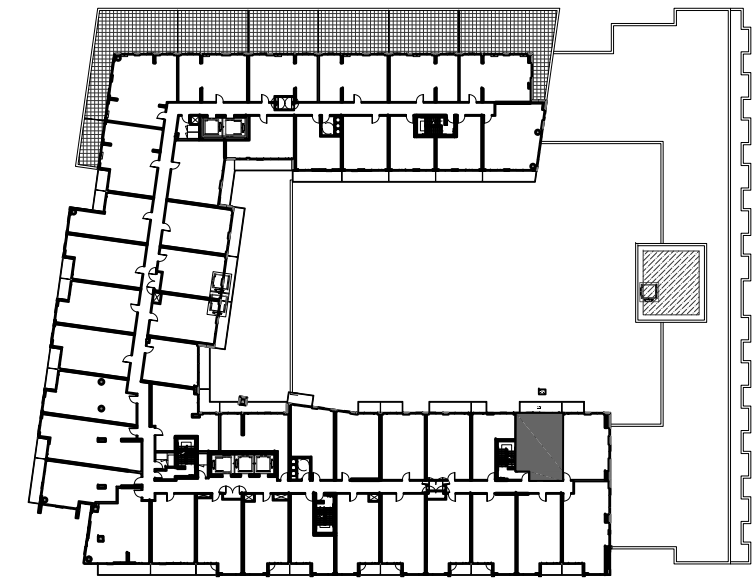
date  
 August 27, 2021

scale  
 1:48

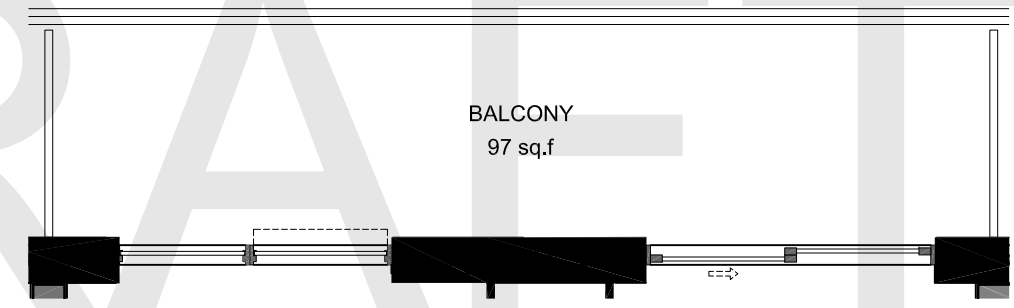
drawn by

sheet

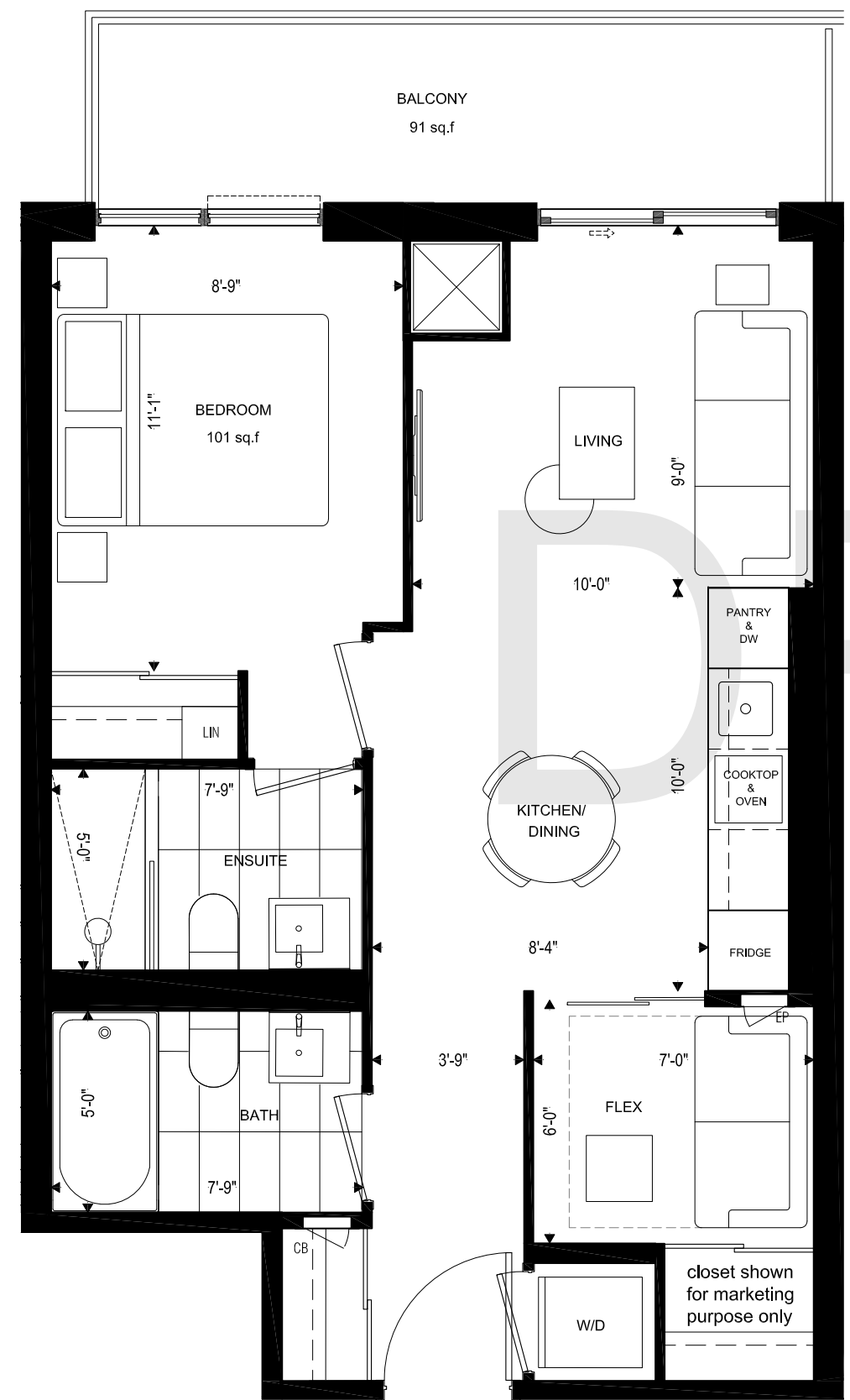
**UNIT 28**



KEY PLAN - L04-05

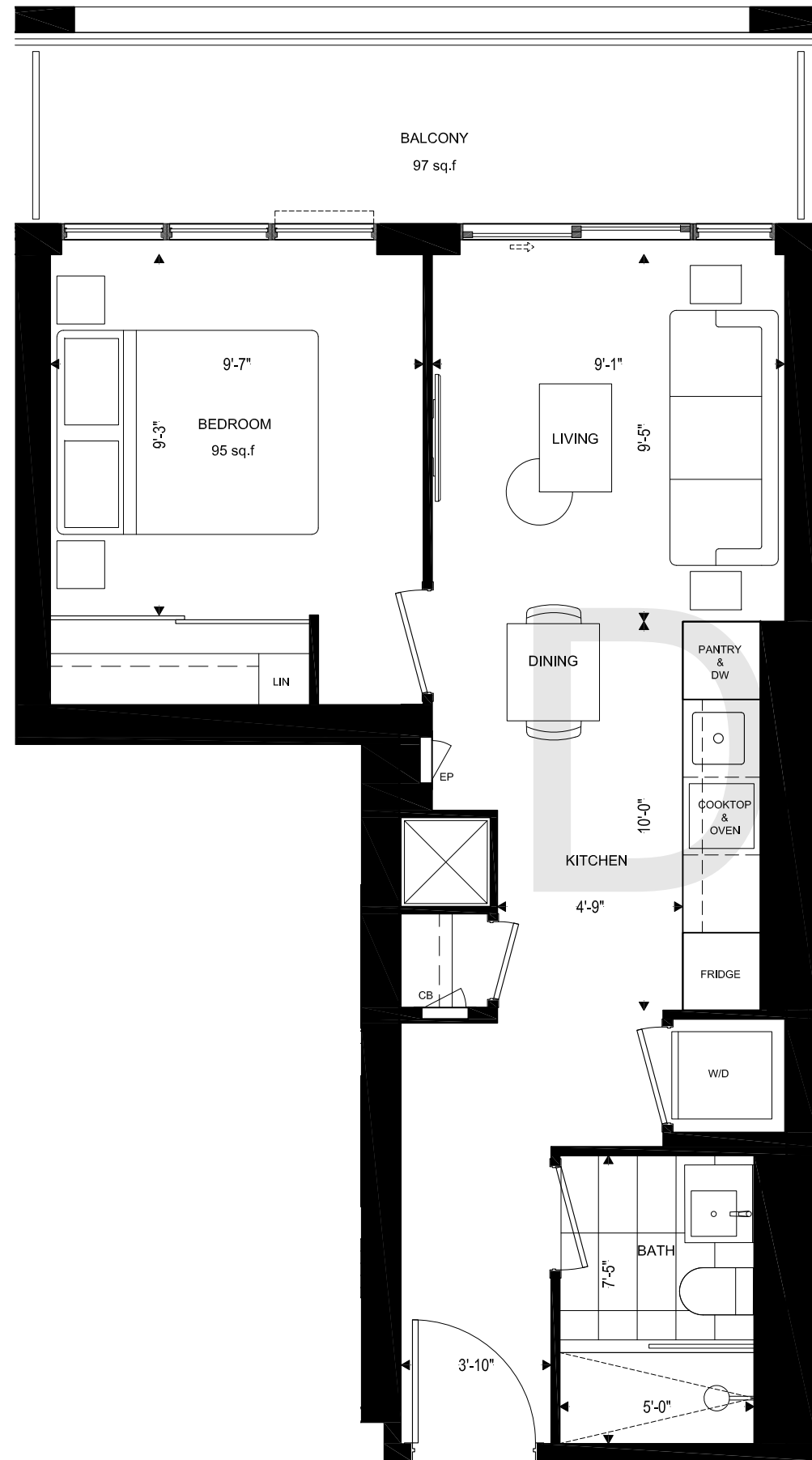


PLAN - L04

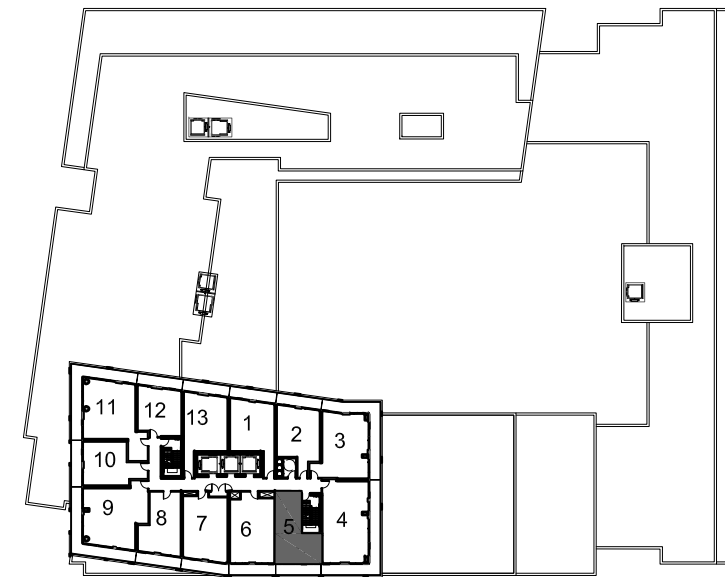


PLAN - L05

**1BR+F**  
**563 sq.f**



PLAN - L10-22



KEY PLAN - L9-L22

DRAFT

**1BR**  
474 sq.f

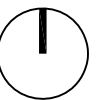
1. Copyright of this drawing is reserved by the Architect. The drawing, and all associated documents are instruments of service by the Architect. The drawing, and the information contained therein, may not be reproduced in whole or in part without prior written permission of the Architect.
2. These Contract Documents are the property of the Architect. The Architect bears no responsibility for the interpretation of these documents by the Contractor. Upon written application the Architect will provide written/graphic clarification or supplementary information regarding the intent of the Contract Documents. The Architect will review Shop Drawings submitted by the Contractor for design conformance only.
3. Drawings are not to be scaled for construction. The Contractor is to verify all existing conditions and dimensions required to perform the work and report and discrepancies with the Contract Documents to the Architect before commencing any work.
4. Positions of exposed finishes for mechanical or electrical devices, fitting and fixtures are indicated on architectural drawings. The location shown on the architectural drawing govern over the mechanical and electrical drawings. Those items not clearly located will be located as directed by the Architect.
5. These drawings are not to be used for construction unless noted below as "Issued for Construction".
6. All work is to be carried out in conformance with the Code and Bylaws of the Authorities having jurisdiction.
7. The Architect of these plans and specifications gives no warranty or representation to any party about the constructability of the building(s) represented by them. All contractors or subcontractors must satisfy themselves when bidding and at all times ensure that they can properly construct the work represented by these plans.

No.	Issuance	Date
1	Client Review	

**WALLMANARCHITECTS**

117 Peter Street, Suite 208  
 Toronto, Ontario M5V 2G9  
 t 416 340 1870  
 f 416 340 1871  
 info@wallmanarchitects.com

project north



project

**9825 YONGE STREET**

RICHMOND HILL, ONTARIO

client

**METROVIEW DEVELOPMENTS**

title

**1BR**

project number

18-13

date

August 27, 2021

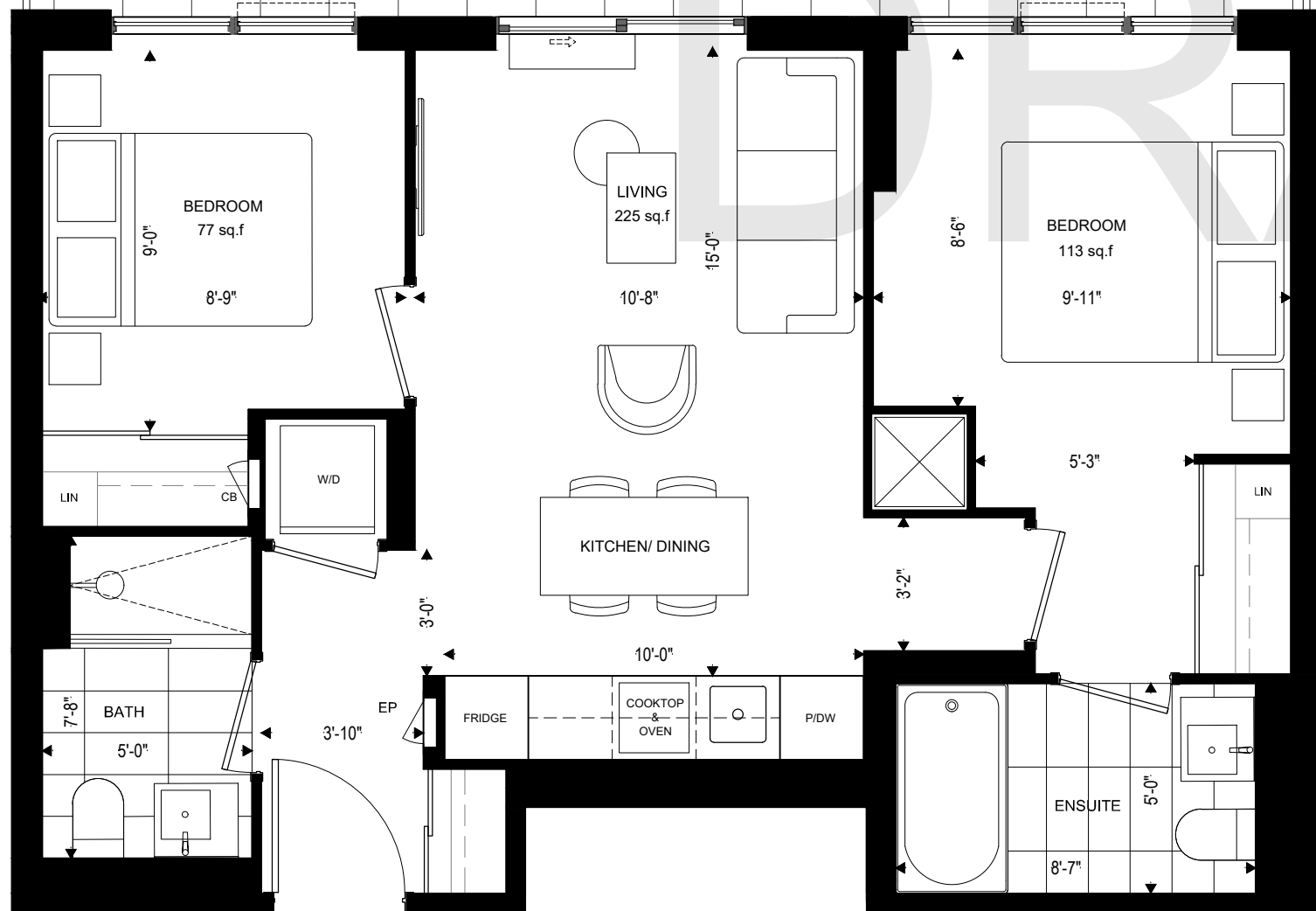
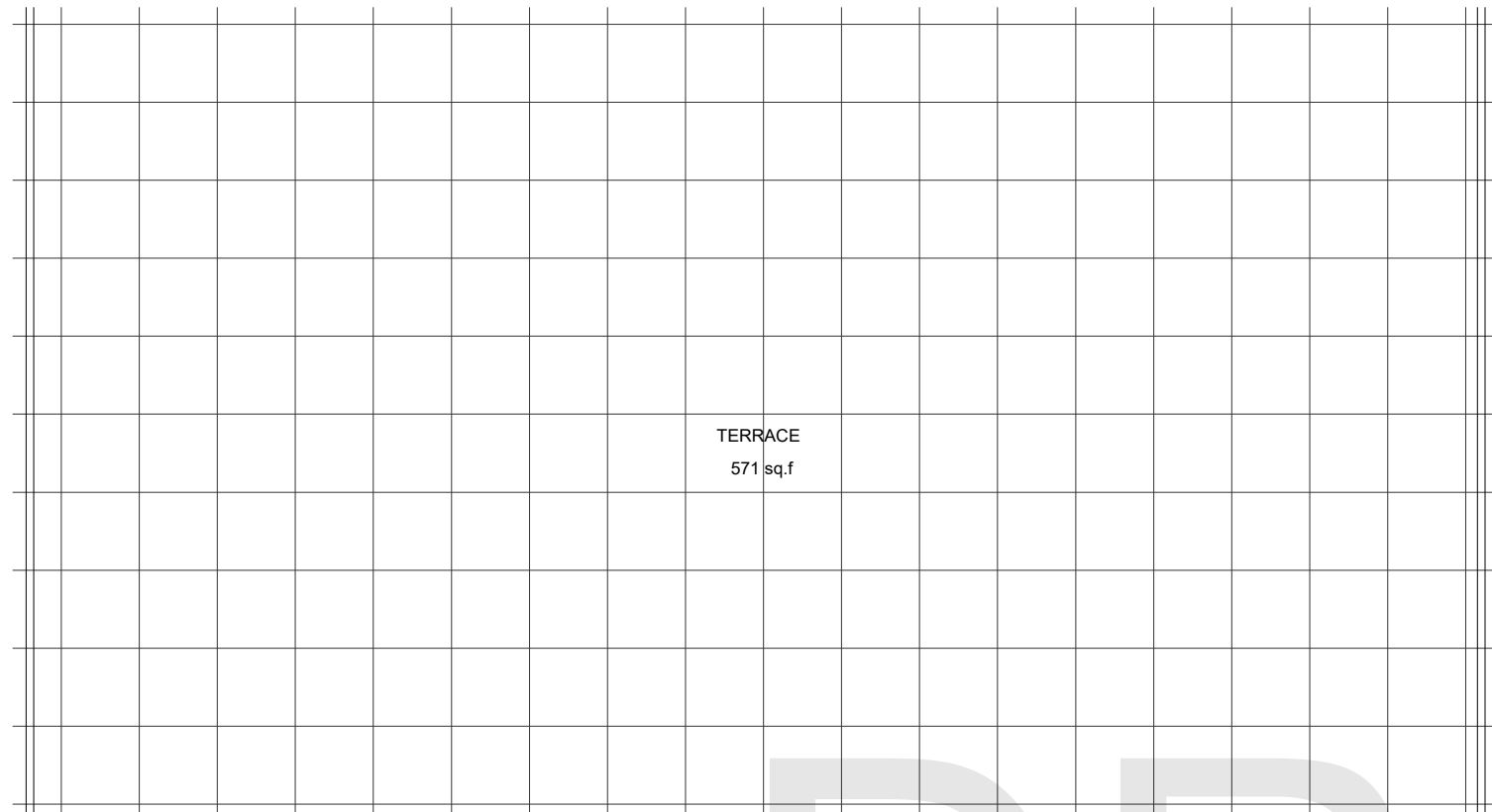
scale

1:48

drawn by

sheet

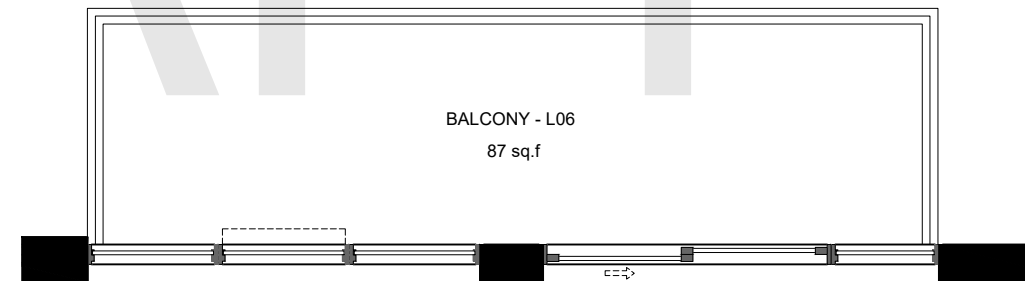
**UNIT T05**



PLAN - L05



KEY PLAN - L05 - L06



PLAN - L06

**2BR**  
**631 sq.f**

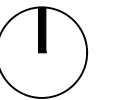
1. Copyright of this drawing is reserved by the Architect. The drawing, and all associated documents are instruments of service by the Architect. The drawing, and the information contained therein, may not be reproduced in whole or in part without prior written permission of the Architect.
2. These Contract Documents are the property of the Architect. The Architect bears no responsibility for the interpretation of these documents by the Contractor. Upon written application the Architect will provide written/graphic clarification or supplementary information regarding the intent of the Contract Documents. The Architect will review Shop Drawings submitted by the Contractor for design conformance only.
3. Drawings are not to be scaled for construction. The Contractor is to verify all existing conditions and dimensions required to perform the work and report and discrepancies with the Contract Documents to the Architect before commencing any work.
4. Positions of exposed finishes for mechanical or electrical devices, fitting and fixtures are indicated on architectural drawings. The location shown on the architectural drawing govern over the mechanical and electrical drawings. Those items not clearly located will be located as directed by the Architect.
5. These drawings are not to be used for construction unless noted below as "Issued for Construction".
6. All work is to be carried out in conformance with the Code and Bylaws of the Authorities having jurisdiction.
7. The Architect of these plans and specifications gives no warranty or representation to any party about the constructability of the building(s) represented by them. All contractors or subcontractors must satisfy themselves when bidding and at all times ensure that they can properly construct the work represented by these plans.

No.	Issuance	Date
1	Client Review	

**WALLMANARCHITECTS**

117 Peter Street, Suite 208  
 Toronto, Ontario M5V 2G9  
 t 416 340 1870  
 f 416 340 1871  
 info@wallmanarchitects.com

project north



project

**9825 YONGE STREET**

RICHMOND HILL, ONTARIO

client  
**METROVIEW DEVELOPMENTS**

title

**2BR**

project number

18-13

date

September 2, 2021

scale

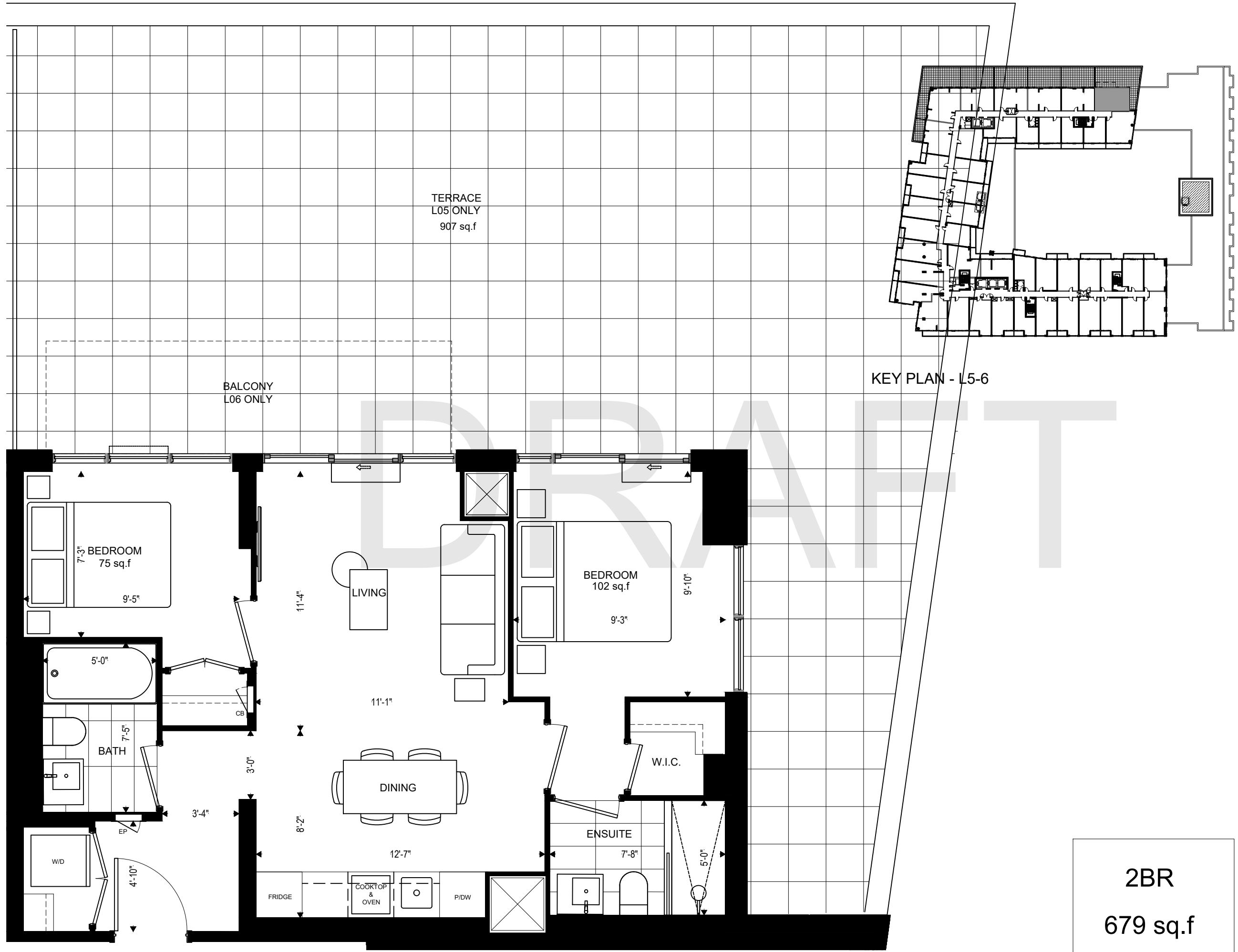
1:48

drawn by

sheet

**UNIT 53**





PLAN - L05

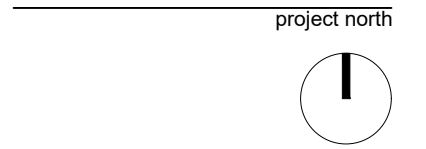
**2BR**  
**679 sq.f**

1. Copyright of this drawing is reserved by the Architect. The drawing, and all associated documents are instruments of service by the Architect. The drawing, and the information contained therein, may not be reproduced in whole or in part without prior written permission of the Architect.
2. These Contract Documents are the property of the Architect. The Architect bears no responsibility for the interpretation of these documents by the Contractor. Upon written application the Architect will provide written/graphic clarification or supplementary information regarding the intent of the Contract Documents. The Architect will review Shop Drawings submitted by the Contractor for design conformance only.
3. Drawings are not to be scaled for construction. The Contractor is to verify all existing conditions and dimensions required to perform the work and report and discrepancies with the Contract Documents to the Architect before commencing any work.
4. Positions of exposed finishes for mechanical or electrical devices, fitting and fixtures are indicated on architectural drawings. The location shown on the architectural drawing govern over the mechanical and electrical drawings. Those items not clearly located will be located as directed by the Architect.
5. These drawings are not to be used for construction unless noted below as "Issued for Construction".
6. All work is to be carried out in conformance with the Code and Bylaws of the Authorities having jurisdiction.
7. The Architect of these plans and specifications gives no warranty or representation to any party about the constructability of the building(s) represented by them. All contractors or subcontractors must satisfy themselves when bidding and at all times ensure that they can properly construct the work represented by these plans.

No.	Issuance	Date
1	Client Review	

**WALLMANARCHITECTS**

117 Peter Street, Suite 208  
 Toronto, Ontario M5V 2G9  
 t 416 340 1870  
 f 416 340 1871  
 info@wallmanarchitects.com



project  
**9825 YONGE STREET**

RICHMOND HILL, ONTARIO

client  
**METROVIEW DEVELOPMENTS**

title  
**2BR**

project number  
**18-13**

date  
**August 9, 2021**

scale  
**1:48**

drawn by

sheet

**UNIT 66**