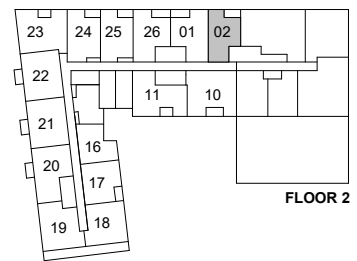
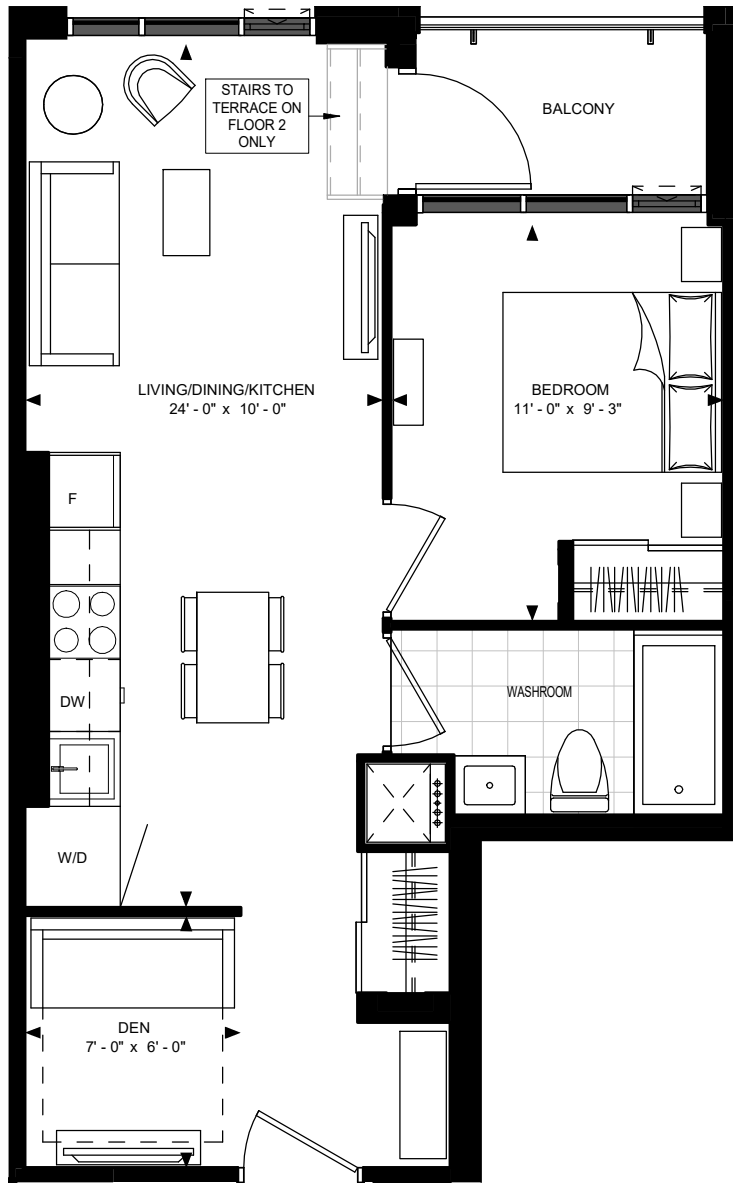
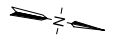


SUITE 1D1-A

5858 Yonge Street



SUITE 1D1-A
SUITE AREA: 551 SF



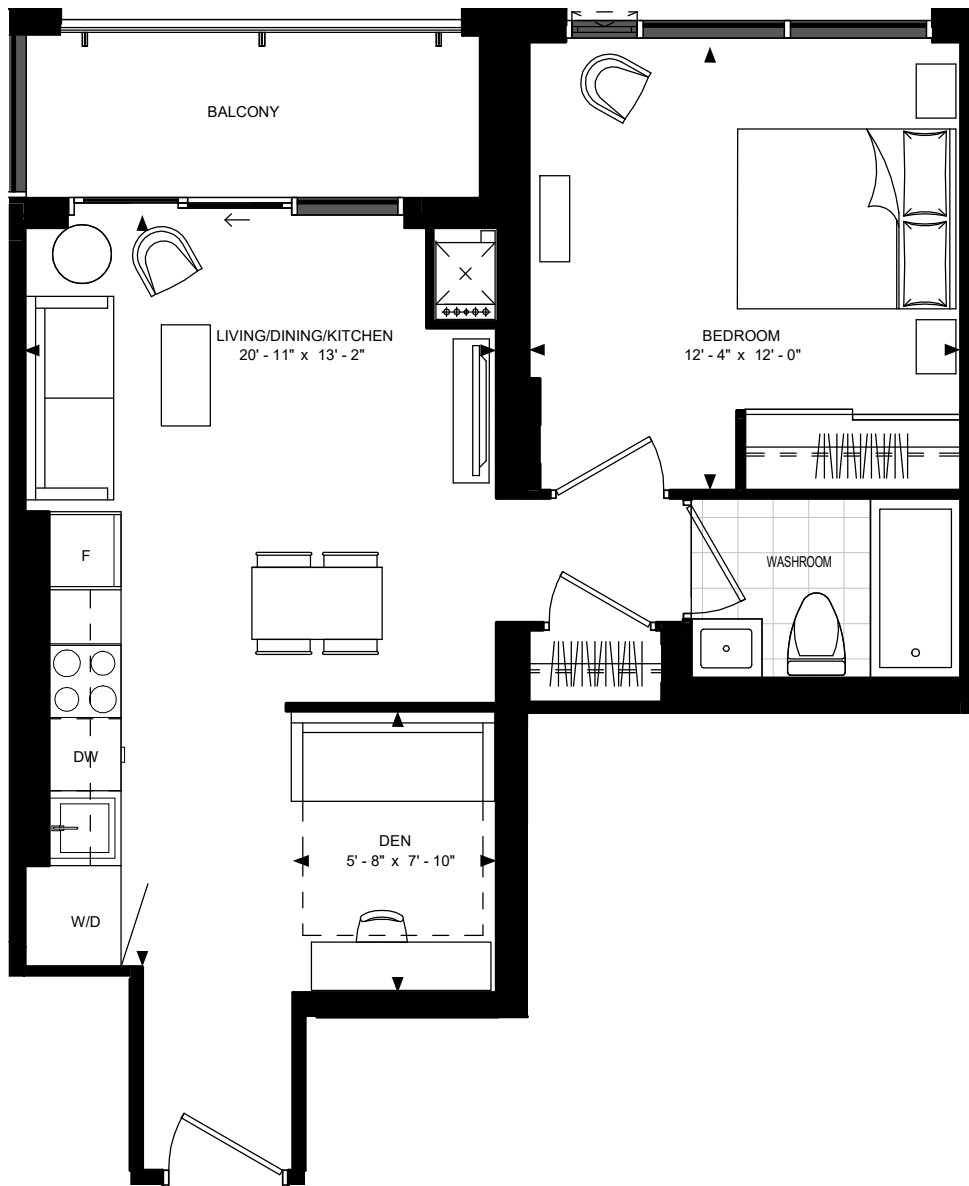
Disclaimer : Materials, specifications & floor plans are subject to change without notice. All renderings are artist's conceptions. All floor plans have approximate dimensions. Actual usable floor space may vary from the stated floor area. E.&O.E.

12 JANUARY 2022

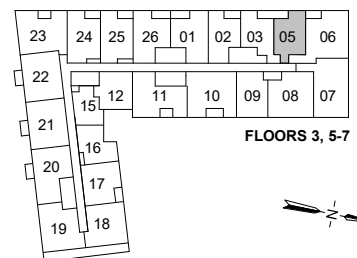
NOT TO SCALE

SUITE 1D1-B

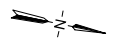
5858 Yonge Street



SUITE 1D1-B
SUITE AREA: 590 SF



FLOORS 3, 5-7



Disclaimer : Materials, specifications & floor plans are subject to change without notice. All renderings are artist's conceptions.
All floor plans have approximate dimensions. Actual usable floor space may vary from the stated floor area. E.&O.E.

12 JANUARY 2022

NOT TO SCALE