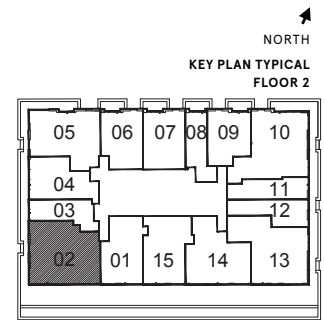
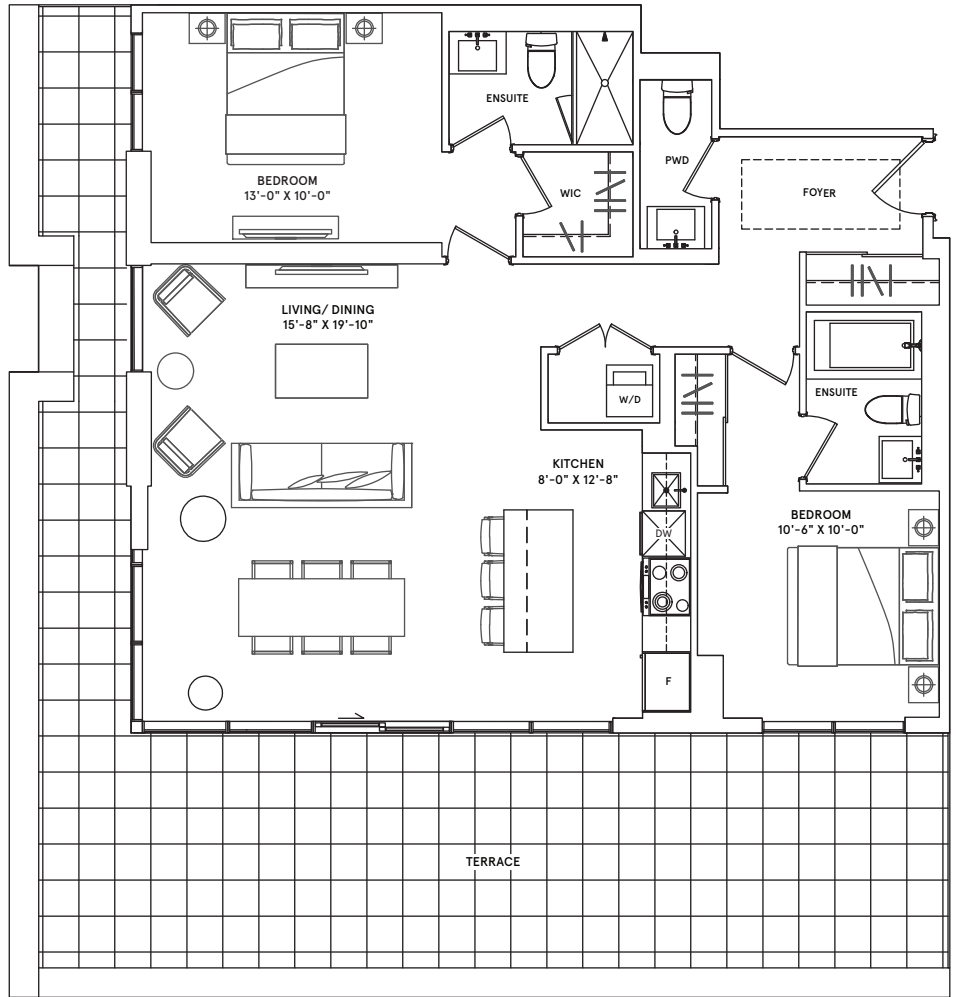


THE
FREDERICK
 | CONDOMINIUMS |

THE
ARMISEN

2 BEDROOM
 Interior: 1,062 sq.ft.
 Exterior: 518 sq.ft.

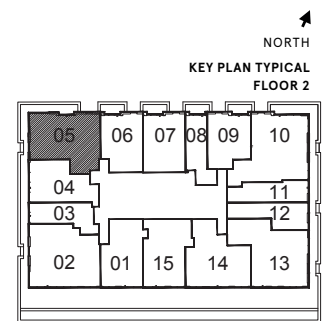
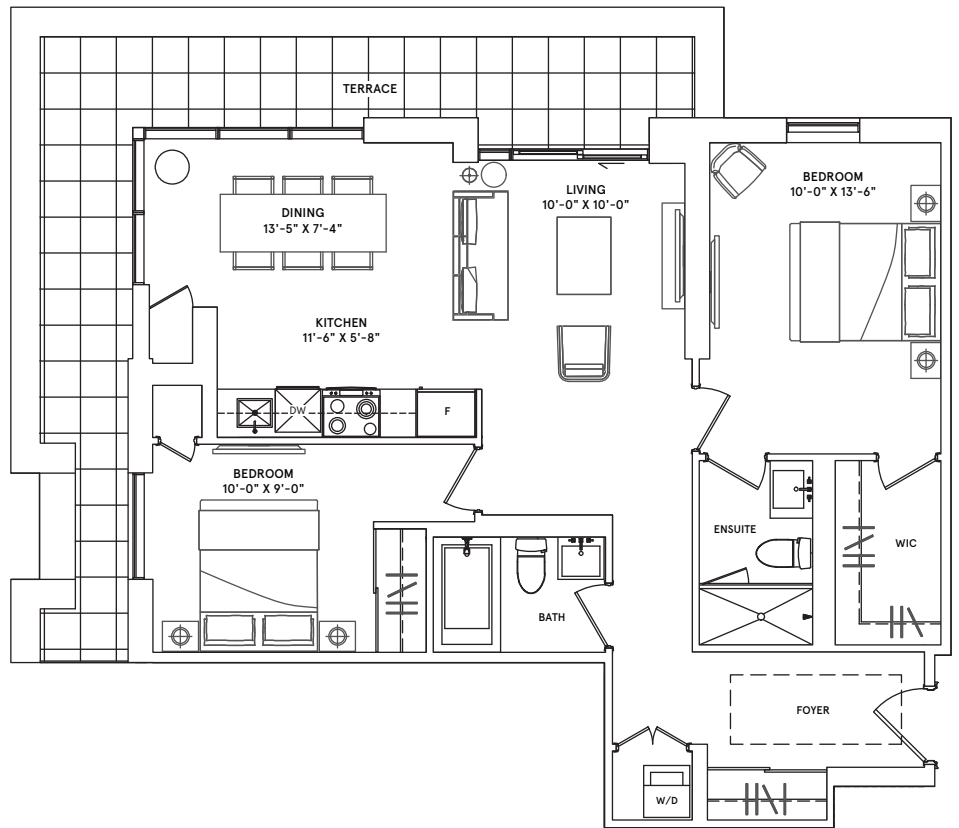


Dimensions, specifications, layouts (including but not limited to tile patterns), window sizes, mullions, fixture representation, appliance and fixture locations, and materials are approximate only, may vary, and are subject to changes without notice as provided in the Agreement of Purchase and Sale. Plans may be reversed. Wall thickness will vary with floor levels reducing room dimensions accordingly. Actual usable floor space may vary from the stated floor area. Measurements of rooms set forth on any floor plan are generally taken at the greatest points of each given room and centre line of windows (as if the room were perfectly rectangular). Furniture is not included. Furniture shown on terrace spaces should be secured for safety. Prices are subject to change without notice. E. & O.E. Plans are not to scale. For more information on the method used for calculating floor area of any unit, reference should be made to Builder Bulletin NO. 22 published by Tarion.

THE
FREDERICK
 | CONDOMINIUMS |

THE
SANFORD

2 BEDROOM
 Interior: 924 sq.ft.
 Exterior: 200 sq.ft.

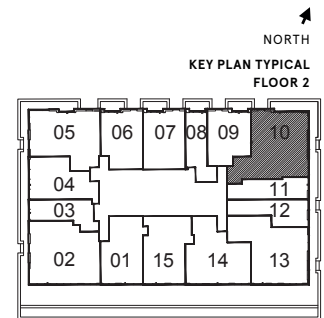
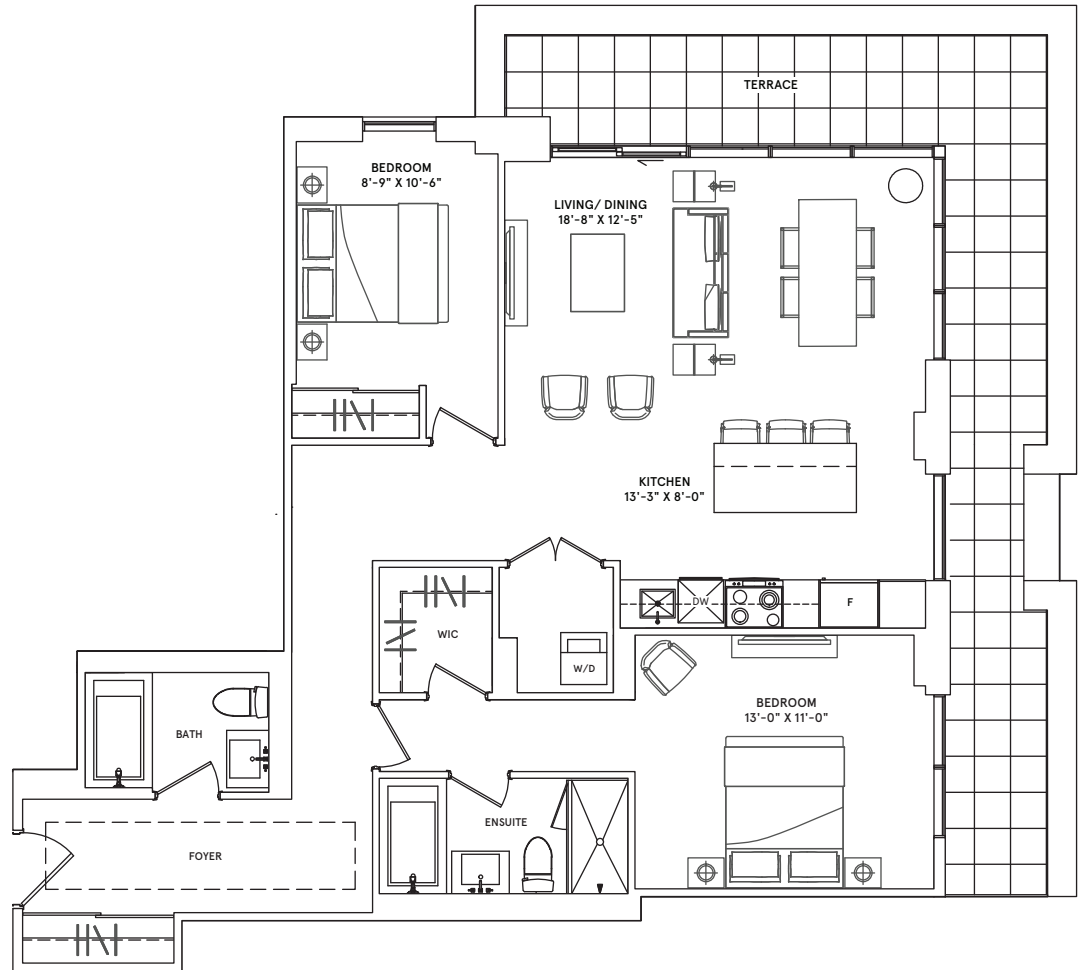


Dimensions, specifications, layouts (including but not limited to tile patterns), window sizes, mullions, fixture representation, appliance and fixture locations, and materials are approximate only, may vary, and are subject to changes without notice as provided in the Agreement of Purchase and Sale. Plans may be reversed. Wall thickness will vary with floor levels reducing room dimensions accordingly. Actual usable floor space may vary from the stated floor area. Measurements of rooms set forth on any floor plan are generally taken at the greatest points of each given room and centre line of windows (as if the room were perfectly rectangular). Furniture is not included. Furniture shown on terrace spaces should be secured for safety. Prices are subject to change without notice. E. & O.E. Plans are not to scale. For more information on the method used for calculating floor area of any unit, reference should be made to Builder Bulletin NO. 22 published by Tarion.

THE
FREDERICK
| CONDOMINIUMS |

THE
TODD

2 BEDROOM
Interior: 1,101 sq.ft.
Exterior: 248 sq.ft.



Dimensions, specifications, layouts (including but not limited to tile patterns), window sizes, mullions, fixture representation, appliance and fixture locations, and materials are approximate only, may vary, and are subject to changes without notice as provided in the Agreement of Purchase and Sale. Plans may be reversed. Wall thickness will vary with floor levels reducing room dimensions accordingly. Actual usable floor space may vary from the stated floor area. Measurements of rooms set forth on any floor plan are generally taken at the greatest points of each given room and centre line of windows (as if the room were perfectly rectangular). Furniture is not included. Furniture shown on terrace spaces should be secured for safety. Prices are subject to change without notice. E. & O.E. Plans are not to scale. For more information on the method used for calculating floor area of any unit, reference should be made to Builder Bulletin NO. 22 published by Tarion.

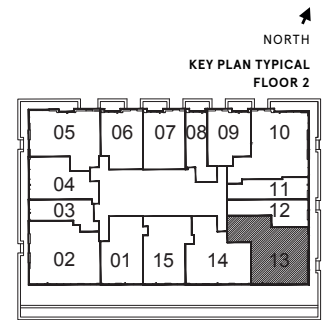
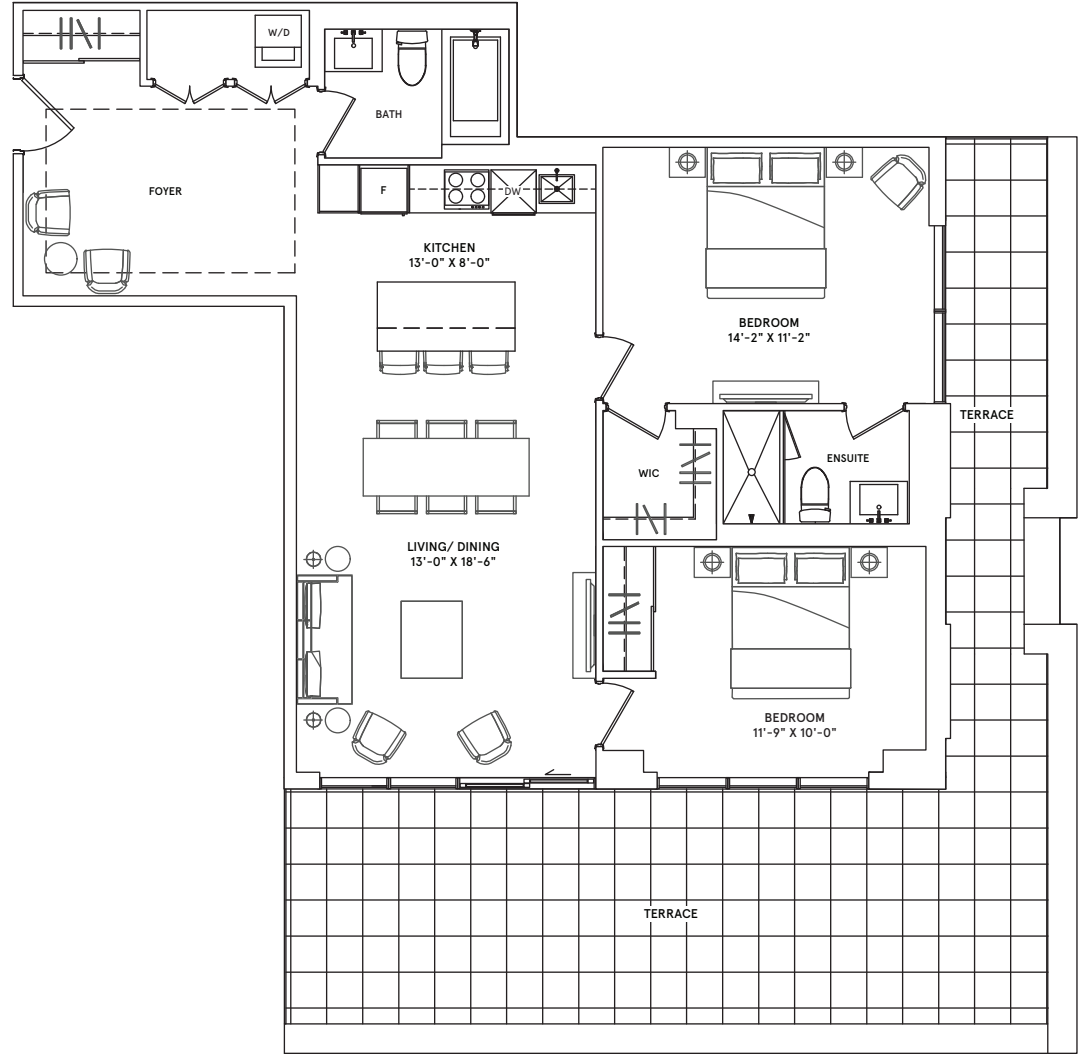
THE
FREDERICK
 | CONDOMINIUMS |

THE CHOPIN

2 BEDROOM

Interior: 1,027 sq.ft.

Exterior: 455 sq.ft.



Dimensions, specifications, layouts (including but not limited to tile patterns), window sizes, mullions, fixture representation, appliance and fixture locations, and materials are approximate only, may vary, and are subject to changes without notice as provided in the Agreement of Purchase and Sale. Plans may be reversed. Wall thickness will vary with floor levels reducing room dimensions accordingly. Actual usable floor space may vary from the stated floor area. Measurements of rooms set forth on any floor plan are generally taken at the greatest points of each given room and centre line of windows (as if the room were perfectly rectangular). Furniture is not included. Furniture shown on terrace spaces should be secured for safety. Prices are subject to change without notice. E. & O.E. Plans are not to scale. For more information on the method used for calculating floor area of any unit, reference should be made to Builder Bulletin NO. 22 published by Tarion.

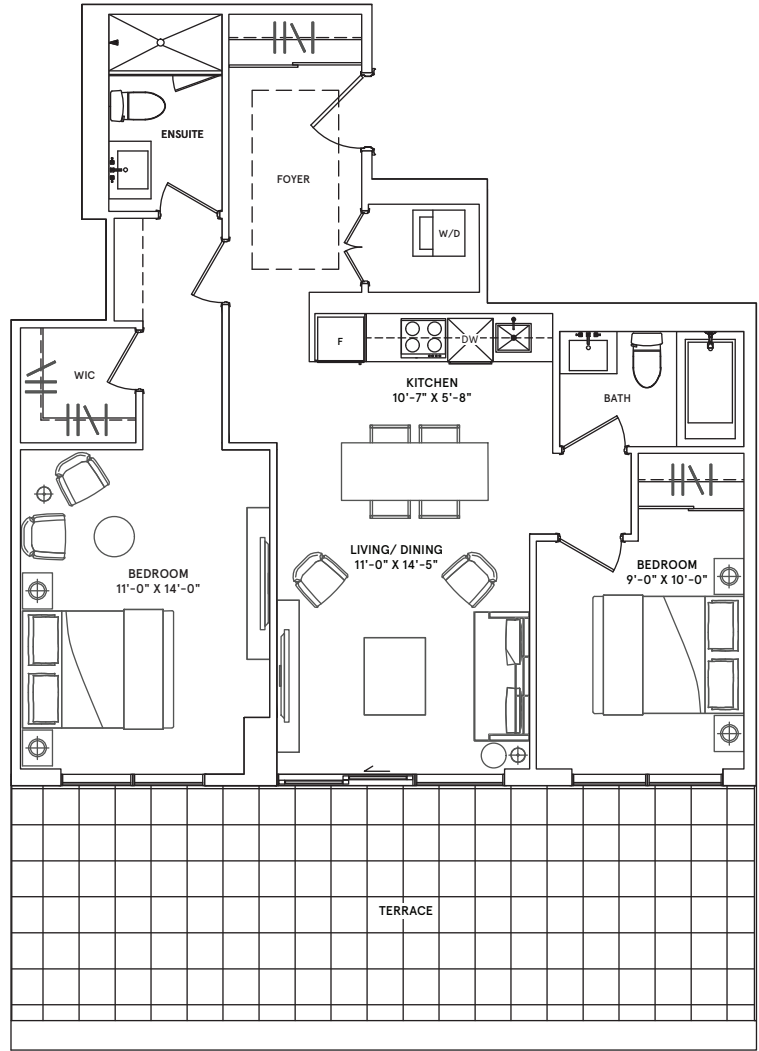
THE
FREDERICK
 | CONDOMINIUMS |

THE
FELLINI

2 BEDROOM

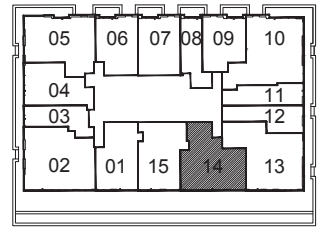
Interior: 862 sq.ft.

Exterior: 328 sq.ft.



NORTH

KEY PLAN TYPICAL
 FLOOR 2

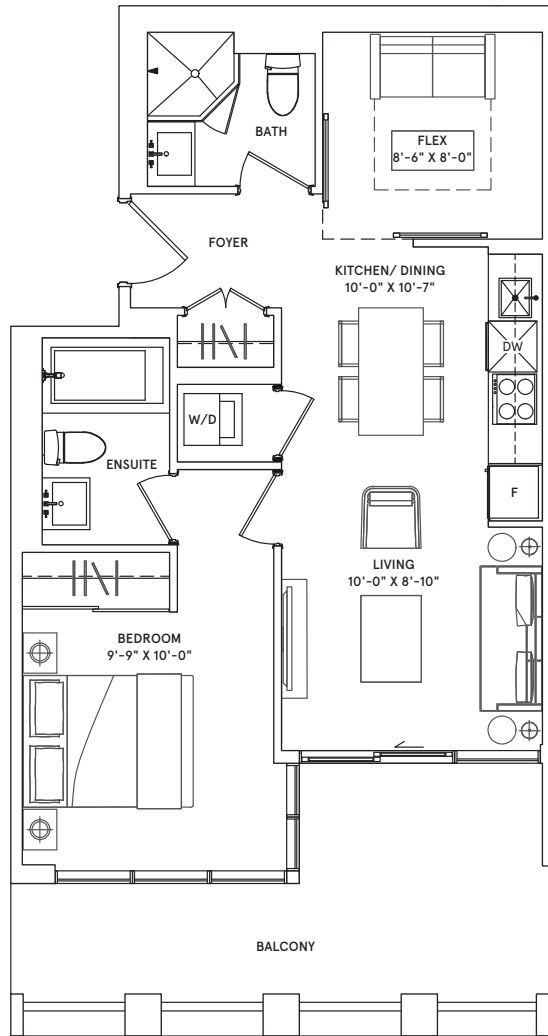


Dimensions, specifications, layouts (including but not limited to tile patterns), window sizes, mullions, fixture representation, appliance and fixture locations, and materials are approximate only, may vary, and are subject to changes without notice as provided in the Agreement of Purchase and Sale. Plans may be reversed. Wall thickness will vary with floor levels reducing room dimensions accordingly. Actual usable floor space may vary from the stated floor area. Measurements of rooms set forth on any floor plan are generally taken at the greatest points of each given room and centre line of windows (as if the room were perfectly rectangular). Furniture is not included. Furniture shown on terrace spaces should be secured for safety. Prices are subject to change without notice. E. & O.E. Plans are not to scale. For more information on the method used for calculating floor area of any unit, reference should be made to Builder Bulletin NO. 22 published by Tarion.

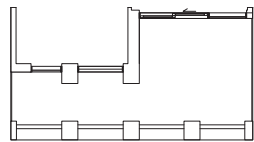
THE
FREDERICK
 | CONDOMINIUMS |

THE
GLADSTONE

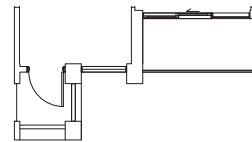
1 BEDROOM + FLEX
 Interior: 614 sq.ft.



FLOOR 3 BALCONY
 AREA 140 SQ.FT



FLOORS 4 & 5 BALCONY
 AREA 138 SQ.FT

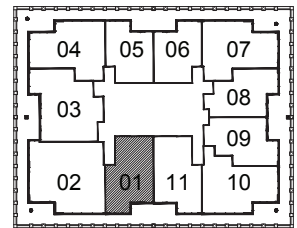


FLOOR 6 BALCONY
 AREA 64 SQ.FT



FLOORS 7 TO 9 BALCONY
 AREA 44 SQ.FT

NORTH
 KEY PLAN TYPICAL
 FLOORS 3-9



Dimensions, specifications, layouts (including but not limited to tile patterns), window sizes, mullions, fixture representation, appliance and fixture locations, and materials are approximate only, may vary, and are subject to changes without notice as provided in the Agreement of Purchase and Sale. Plans may be reversed. Wall thickness will vary with floor levels reducing room dimensions accordingly. Actual usable floor space may vary from the stated floor area. Measurements of rooms set forth on any floor plan are generally taken at the greatest points of each given room and centre line of windows (as if the room were perfectly rectangular). Furniture is not included. Furniture shown on terrace spaces should be secured for safety. Prices are subject to change without notice. E. & O. E. Plans are not to scale. For more information on the method used for calculating floor area of any unit, reference should be made to Builder Bulletin NO. 22 published by Tarion.

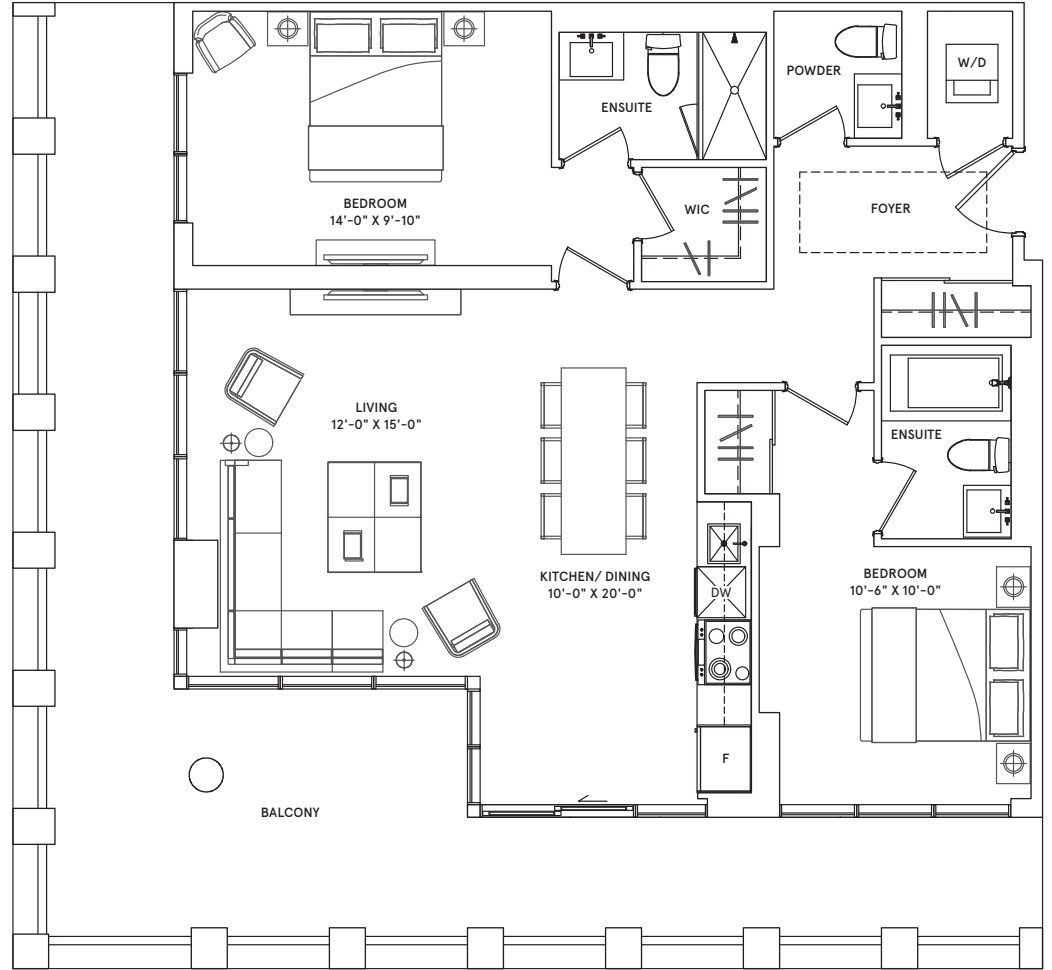


Building Excellence

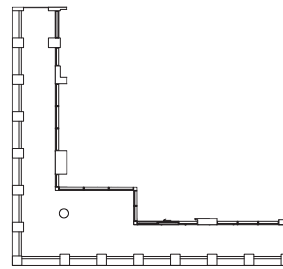
THE
FREDERICK
| CONDOMINIUMS |

THE
ASTAIRE

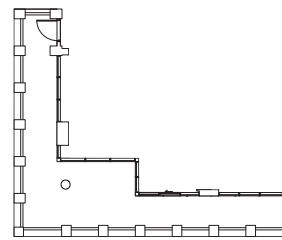
2 BEDROOM
Interior: 997sq.ft.



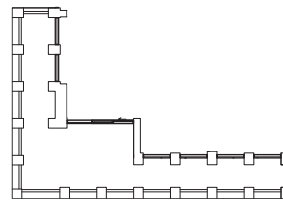
FLOOR 3 BALCONY
AREA 387 SQ. FT



FLOORS 4 & 5 BALCONY
AREA 384 SQ. FT



FLOOR 6 BALCONY
AREA 352 SQ. FT

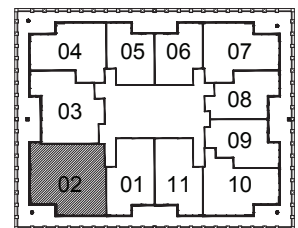


FLOOR 7 BALCONY
AREA 322 SQ. FT



FLOORS 8 & 9 BALCONY
AREA 46 SQ. FT

NORTH
KEY PLAN TYPICAL
FLOORS 3-9



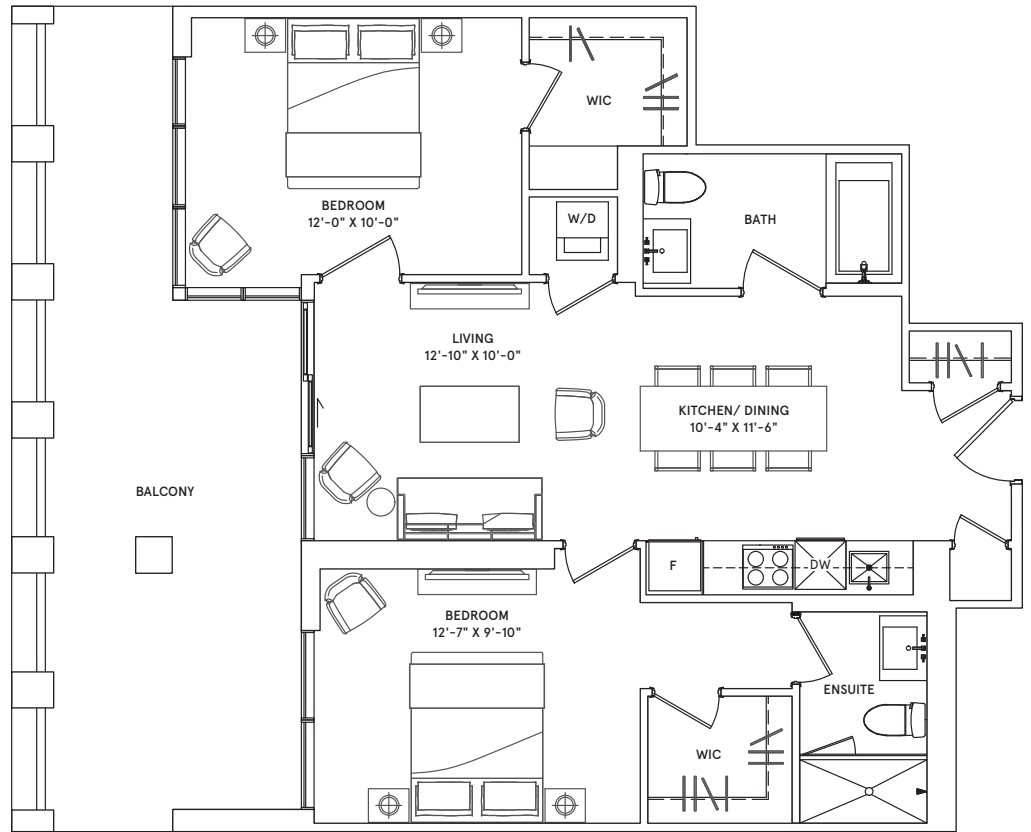
Dimensions, specifications, layouts (including but not limited to tile patterns), window sizes, mullions, fixture representation, appliance and fixture locations, and materials are approximate only, may vary, and are subject to changes without notice as provided in the Agreement of Purchase and Sale. Plans may be reversed. Wall thickness will vary with floor levels reducing room dimensions accordingly. Actual usable floor space may vary from the stated floor area. Measurements of rooms set forth on any floor plan are generally taken at the greatest points of each given room and centre line of windows (as if the room were perfectly rectangular). Furniture is not included. Furniture shown on terrace spaces should be secured for safety. Prices are subject to change without notice. E. & O. E. Plans are not to scale. For more information on the method used for calculating floor area of any unit, reference should be made to Builder Bulletin NO. 22 published by Tarion.

THE
FREDERICK
| CONDOMINIUMS |

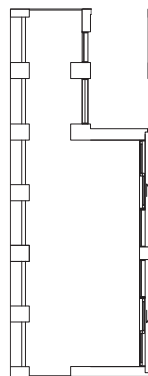
THE
PERRY

2 BEDROOM

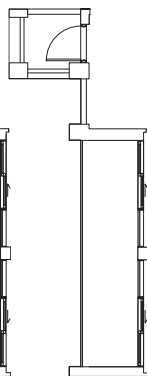
Interior: 825 sq.ft.



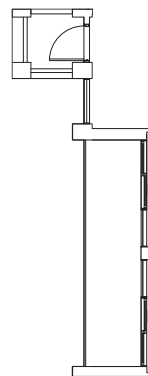
FLOOR 3 BALCONY
AREA 254 SQ.FT



FLOORS 4 & 5 BALCONY
AREA 250 SQ.FT



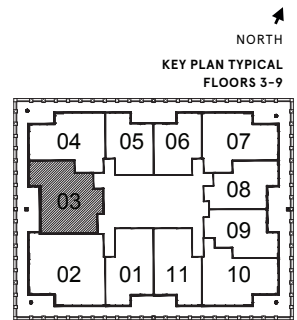
FLOOR 6 BALCONY
AREA 117 SQ.FT



FLOOR 7 BALCONY
AREA 117 SQ.FT



FLOORS 8 & 9 BALCONY
AREA 94 SQ.FT



NORTH
KEY PLAN TYPICAL
FLOORS 3-9



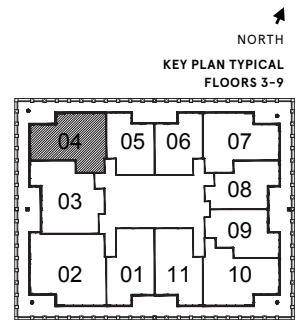
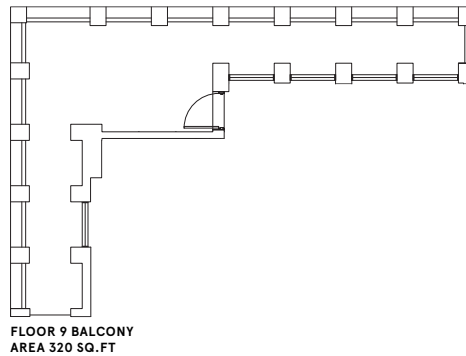
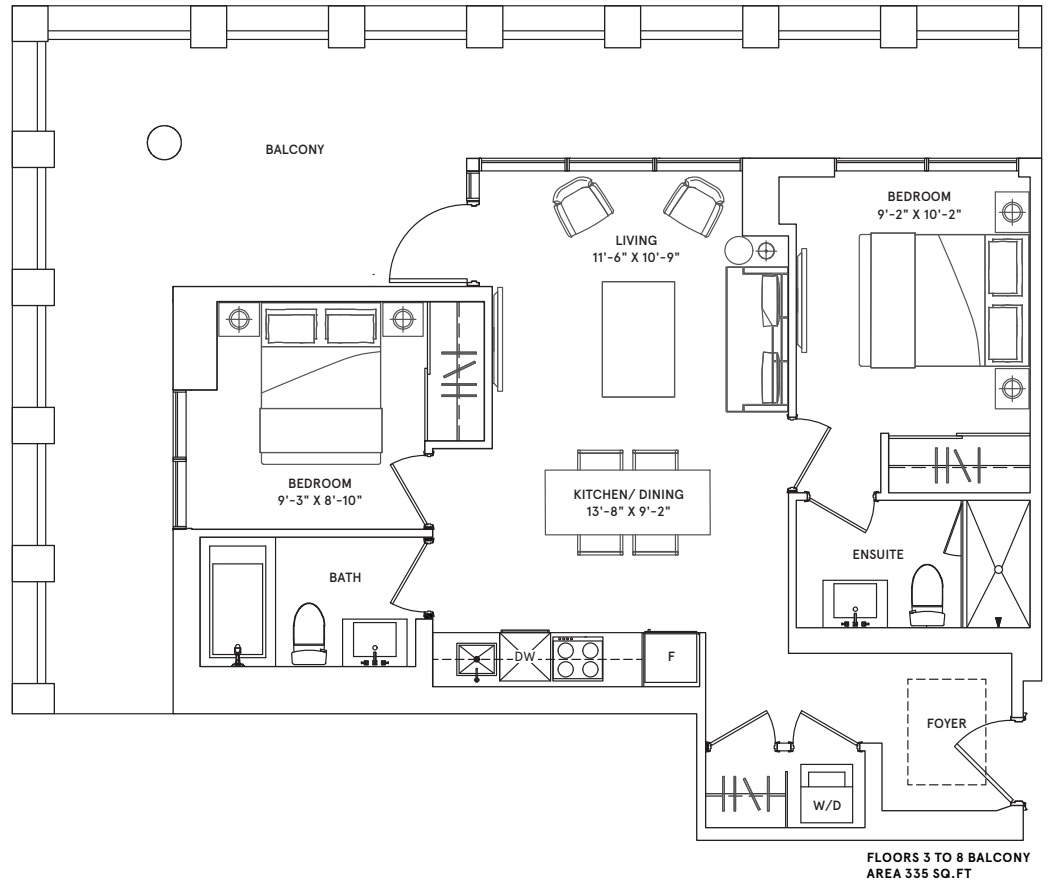
Building Excellence

Dimensions, specifications, layouts (including but not limited to tile patterns), window sizes, mullions, fixture representation, appliance and fixture locations, and materials are approximate only, may vary, and are subject to changes without notice as provided in the Agreement of Purchase and Sale. Plans may be reversed. Wall thickness will vary with floor levels reducing room dimensions accordingly. Actual usable floor space may vary from the stated floor area. Measurements of rooms set forth on any floor plan are generally taken at the greatest points of each given room and centre line of windows (as if the room were perfectly rectangular). Furniture is not included. Furniture shown on terrace spaces should be secured for safety. Prices are subject to change without notice. E. & O.E. Plans are not to scale. For more information on the method used for calculating floor area of any unit, reference should be made to Builder Bulletin NO. 22 published by Tarion.

THE
FREDERICK
 | CONDOMINIUMS |

THE
MERCURY

2 BEDROOM
 Interior: 715 sq.ft.



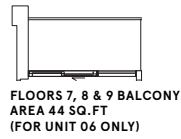
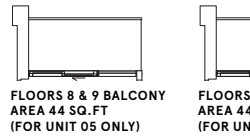
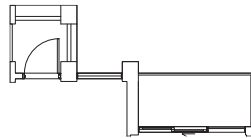
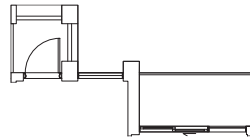
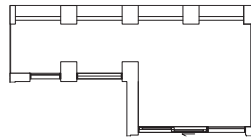
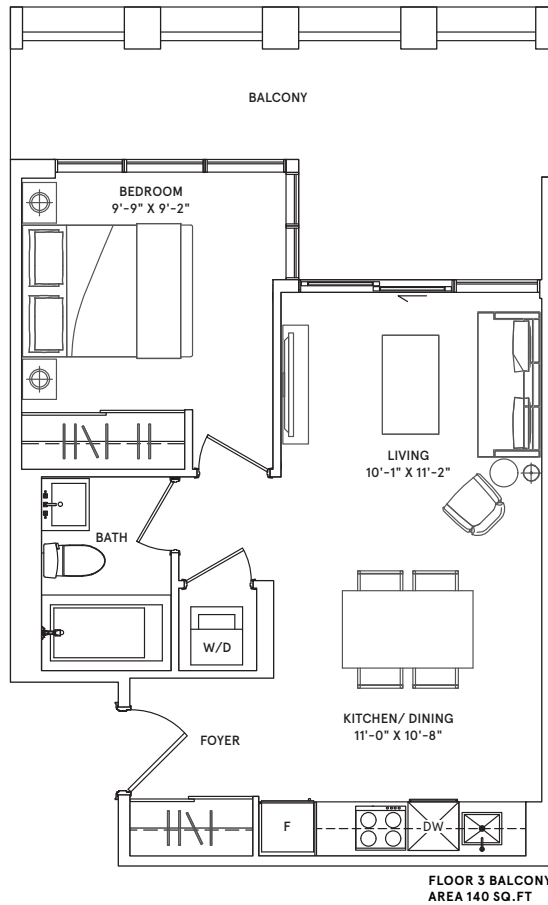
Dimensions, specifications, layouts (including but not limited to tile patterns), window sizes, mullions, fixture representation, appliance and fixture locations, and materials are approximate only, may vary, and are subject to changes without notice as provided in the Agreement of Purchase and Sale. Plans may be reversed. Wall thickness will vary with floor levels reducing room dimensions accordingly. Actual usable floor space may vary from the stated floor area. Measurements of rooms set forth on any floor plan are generally taken at the greatest points of each given room and centre line of windows (as if the room were perfectly rectangular). Furniture is not included. Furniture shown on terrace spaces should be secured for safety. Prices are subject to change without notice. E. & O.E. Plans are not to scale. For more information on the method used for calculating floor area of any unit, reference should be made to Builder Bulletin NO. 22 published by Tarion.

THE
FREDERICK
 | CONDOMINIUMS |

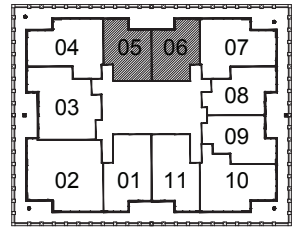
THE
 COUPLES

1 BEDROOM

Interior: 498 sq.ft.



NORTH
 KEY PLAN TYPICAL
 FLOORS 3-9

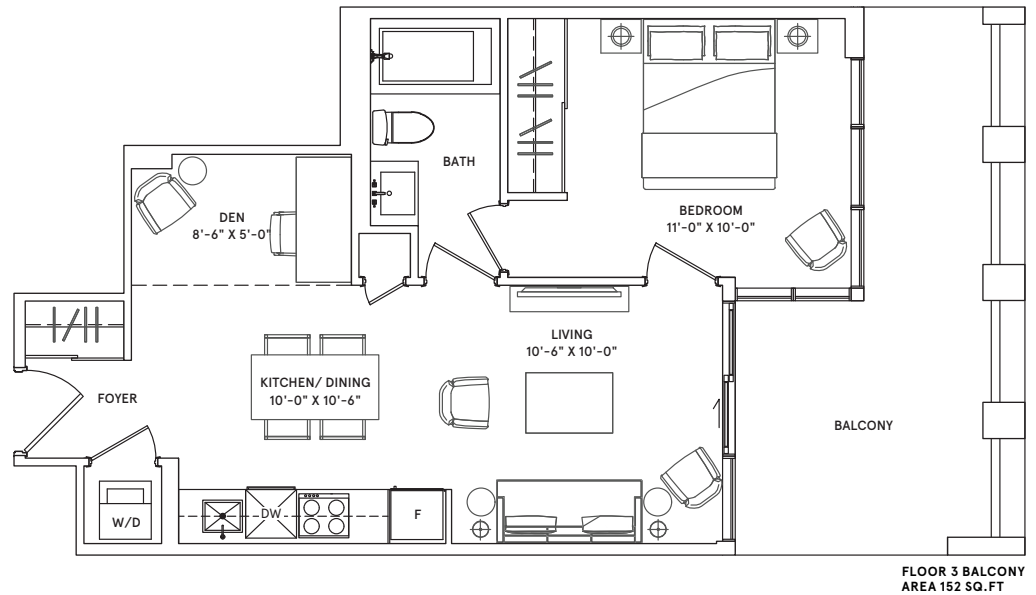


Dimensions, specifications, layouts (including but not limited to tile patterns), window sizes, mullions, fixture representation, appliance and fixture locations, and materials are approximate only, may vary, and are subject to changes without notice as provided in the Agreement of Purchase and Sale. Plans may be reversed. Wall thickness will vary with floor levels reducing room dimensions accordingly. Actual usable floor space may vary from the stated floor area. Measurements of rooms set forth on any floor plan are generally taken at the greatest points of each given room and centre line of windows (as if the room were perfectly rectangular). Furniture is not included. Furniture shown on terrace spaces should be secured for safety. Prices are subject to change without notice. E. & O.E. Plans are not to scale. For more information on the method used for calculating floor area of any unit, reference should be made to Builder Bulletin NO. 22 published by Tarion.

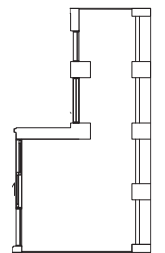
THE
FREDERICK
| CONDOMINIUMS |

THE
HIGHMORE

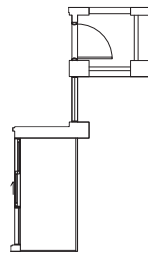
1 BEDROOM + DEN
Interior: 546 sq.ft.



FLOOR 3 BALCONY
AREA 152 SQ.FT



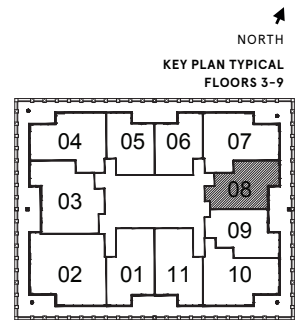
FLOORS 4 & 5 BALCONY
AREA 148 SQ.FT



FLOOR 6 BALCONY
AREA 69 SQ.FT



FLOORS 7 TO 9 BALCONY
AREA 47 SQ.FT



NORTH
KEY PLAN TYPICAL
FLOORS 3-9

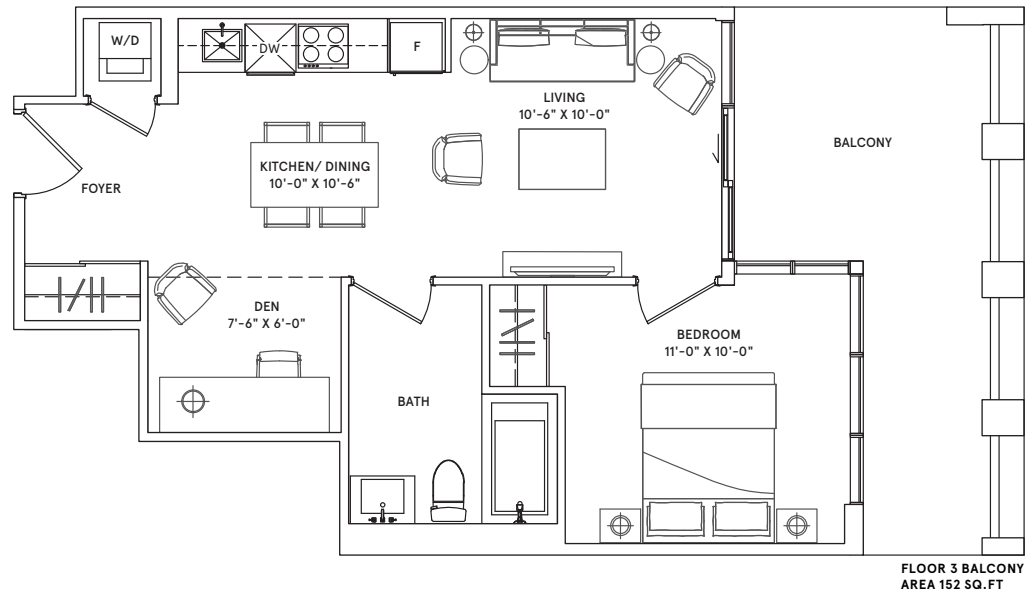


Dimensions, specifications, layouts (including but not limited to tile patterns), window sizes, mullions, fixture representation, appliance and fixture locations, and materials are approximate only, may vary, and are subject to changes without notice as provided in the Agreement of Purchase and Sale. Plans may be reversed. Wall thickness will vary with floor levels reducing room dimensions accordingly. Actual usable floor space may vary from the stated floor area. Measurements of rooms set forth on any floor plan are generally taken at the greatest points of each given room and centre line of windows (as if the room were perfectly rectangular). Furniture is not included. Furniture shown on terrace spaces should be secured for safety. Prices are subject to change without notice. E. & O.E. Plans are not to scale. For more information on the method used for calculating floor area of any unit, reference should be made to Builder Bulletin NO. 22 published by Tarion.

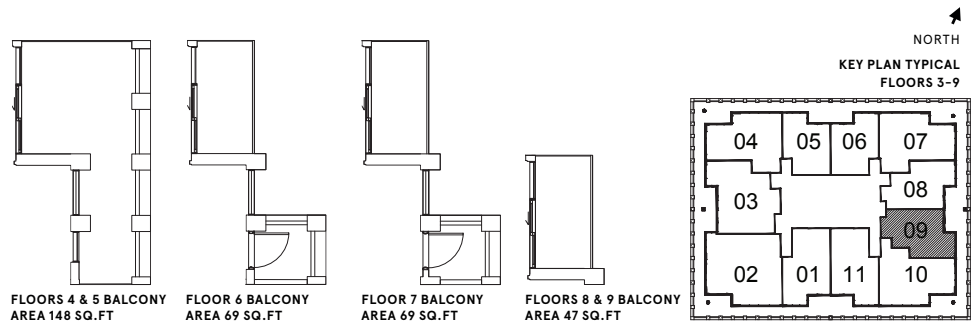
THE
FREDERICK
 | CONDOMINIUMS |

THE
COLE

1 BEDROOM + DEN
 Interior: 562 sq.ft.



FLOOR 3 BALCONY
 AREA 152 SQ.FT

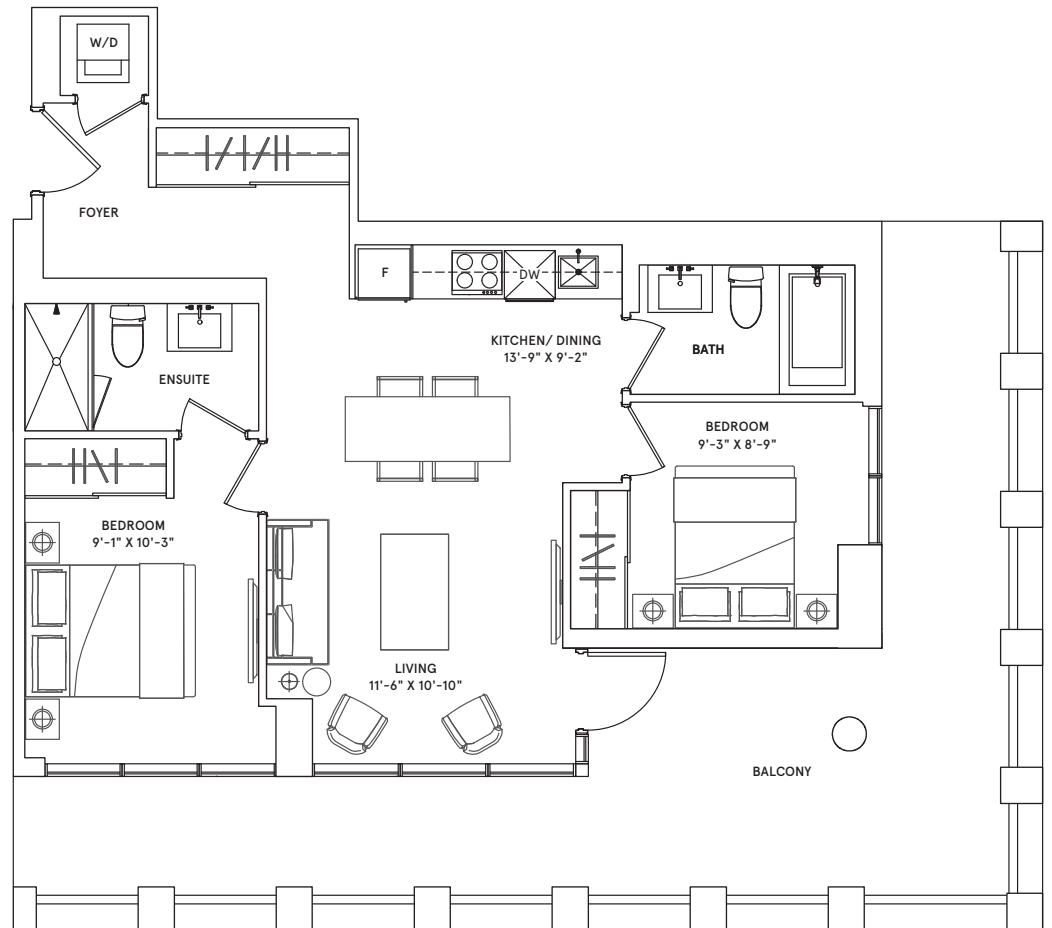


Dimensions, specifications, layouts (including but not limited to tile patterns), window sizes, mullions, fixture representation, appliance and fixture locations, and materials are approximate only, may vary, and are subject to changes without notice as provided in the Agreement of Purchase and Sale. Plans may be reversed. Wall thickness will vary with floor levels reducing room dimensions accordingly. Actual usable floor space may vary from the stated floor area. Measurements of rooms set forth on any floor plan are generally taken at the greatest points of each given room and centre line of windows (as if the room were perfectly rectangular). Furniture is not included. Furniture shown on terrace spaces should be secured for safety. Prices are subject to change without notice. E. & O.E. Plans are not to scale. For more information on the method used for calculating floor area of any unit, reference should be made to Builder Bulletin NO. 22 published by Tarion.

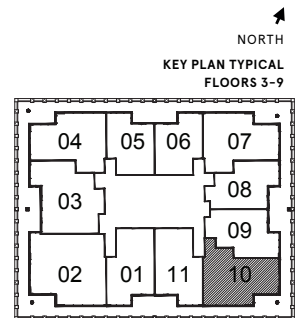
THE
FREDERICK
 | CONDOMINIUMS |

THE
BANTING

2 BEDROOM
 Interior: 725 sq.ft.



FLOORS 3 TO 9 BALCONY
 AREA 335 SQ.FT

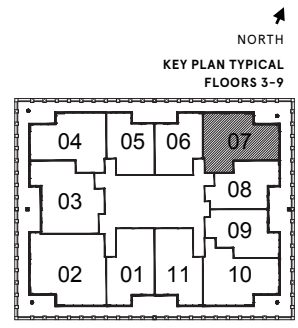
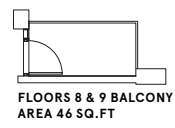
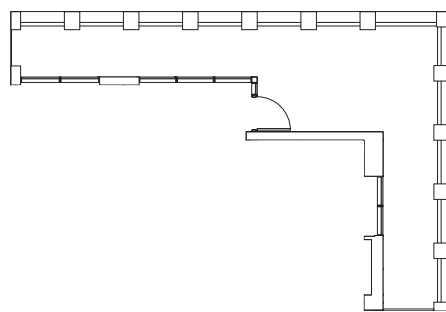
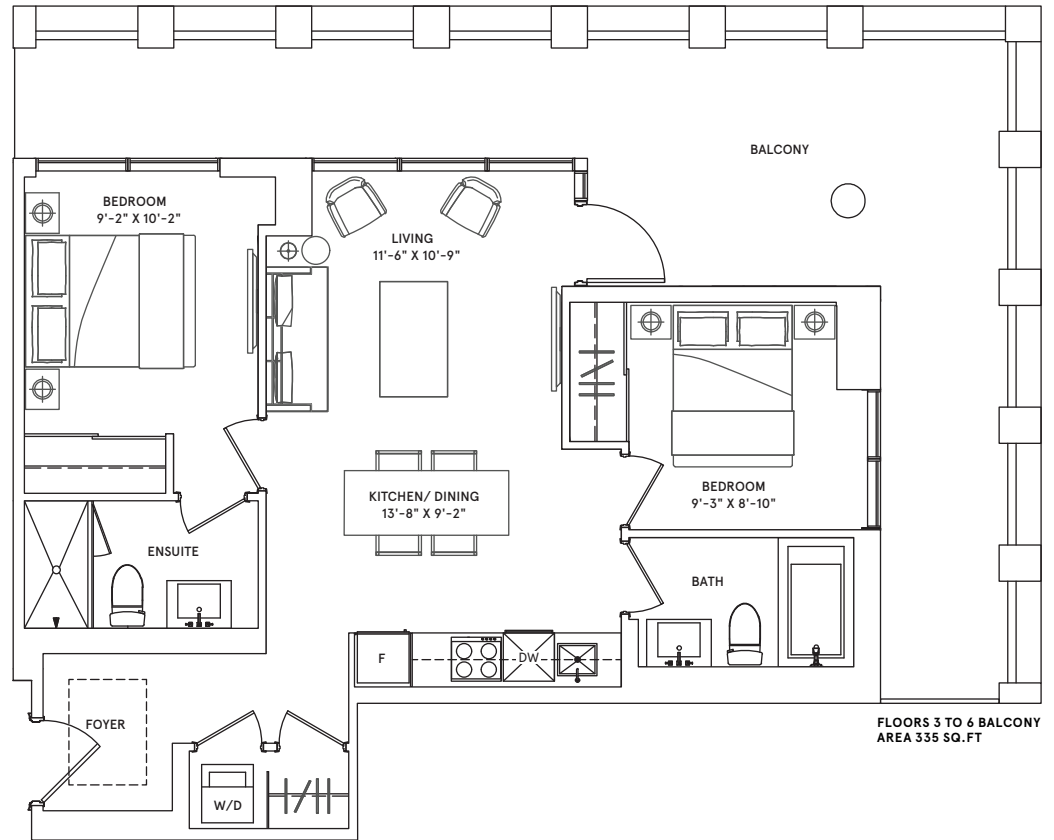


Dimensions, specifications, layouts (including but not limited to tile patterns), window sizes, mullions, fixture representation, appliance and fixture locations, and materials are approximate only, may vary, and are subject to changes without notice as provided in the Agreement of Purchase and Sale. Plans may be reversed. Wall thickness will vary with floor levels reducing room dimensions accordingly. Actual usable floor space may vary from the stated floor area. Measurements of rooms set forth on any floor plan are generally taken at the greatest points of each given room and centre line of windows (as if the room were perfectly rectangular). Furniture is not included. Furniture shown on terrace spaces should be secured for safety. Prices are subject to change without notice. E. & O.E. Plans are not to scale. For more information on the method used for calculating floor area of any unit, reference should be made to Builder Bulletin NO. 22 published by Tarion.

THE
FREDERICK
 | CONDOMINIUMS |

THE
MERCURY 2

2 BEDROOM
 Interior: 715 sq.ft.

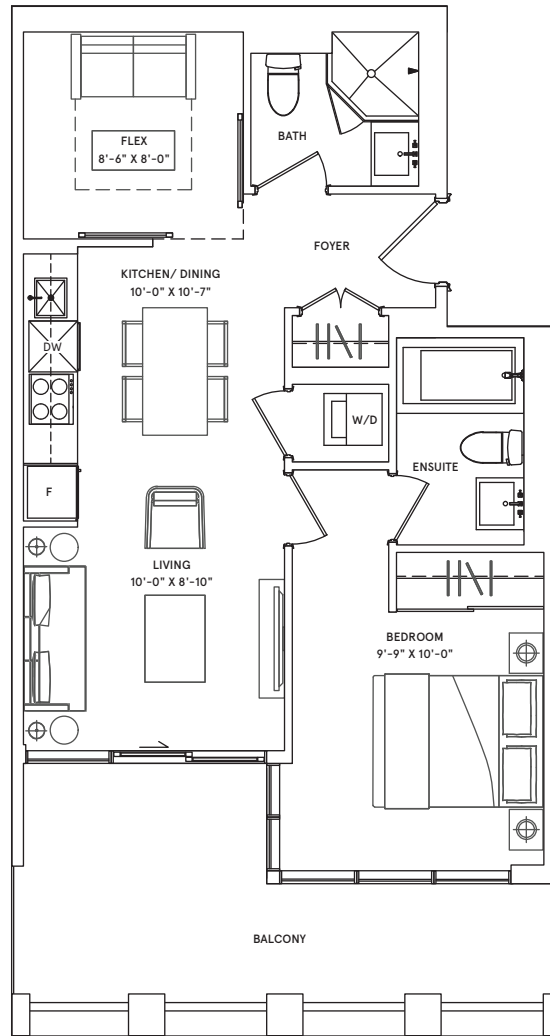


Dimensions, specifications, layouts (including but not limited to tile patterns), window sizes, mullions, fixture representation, appliance and fixture locations, and materials are approximate only, may vary, and are subject to changes without notice as provided in the Agreement of Purchase and Sale. Plans may be reversed. Wall thickness will vary with floor levels reducing room dimensions accordingly. Actual usable floor space may vary from the stated floor area. Measurements of rooms set forth on any floor plan are generally taken at the greatest points of each given room and centre line of windows (as if the room were perfectly rectangular). Furniture is not included. Furniture shown on terrace spaces should be secured for safety. Prices are subject to change without notice. E. & O.E. Plans are not to scale. For more information on the method used for calculating floor area of any unit, reference should be made to Builder Bulletin NO. 22 published by Tarion.

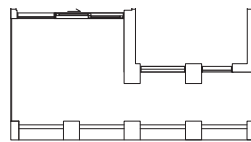
THE
FREDERICK
 | CONDOMINIUMS |

THE
GLADSTONE 2

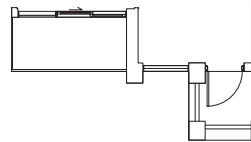
1 BEDROOM + FLEX
 Interior: 614 sq.ft.



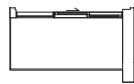
FLOOR 3 BALCONY
 AREA 140 SQ.FT



FLOORS 4 & 5 BALCONY
 AREA 138 SQ.FT

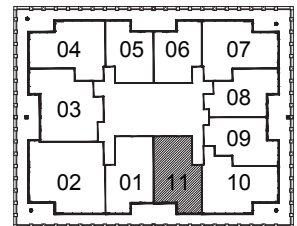


FLOORS 6 & 7 BALCONY
 AREA 69 SQ.FT



FLOORS 8 & 9 BALCONY
 AREA 44 SQ.FT

NORTH
 KEY PLAN TYPICAL
 FLOORS 3-9



Dimensions, specifications, layouts (including but not limited to tile patterns), window sizes, mullions, fixture representation, appliance and fixture locations, and materials are approximate only, may vary, and are subject to changes without notice as provided in the Agreement of Purchase and Sale. Plans may be reversed. Wall thickness will vary with floor levels reducing room dimensions accordingly. Actual usable floor space may vary from the stated floor area. Measurements of rooms set forth on any floor plan are generally taken at the greatest points of each given room and centre line of windows (as if the room were perfectly rectangular). Furniture is not included. Furniture shown on terrace spaces should be secured for safety. Prices are subject to change without notice. E. & O. E. Plans are not to scale. For more information on the method used for calculating floor area of any unit, reference should be made to Builder Bulletin NO. 22 published by Tarion.



Building Excellence