



YONGE
AT
WELLESLEY
STATION

YONGE AT HEART.

PLAZA®

CONTENTS

YONGE AT HEART	04
BDP QUADRANGLE'S DYNAMIC ARCHITECTURE	06
COLOURFUL CHURCH & WELLESLEY	08
A MATTER OF TASTE	10
CONNECTIVITY MADE EASY	14
MARKED WITH DISTINCTION	16
EXCEPTIONAL AMENITIES FOR YOUR DAY-TO-DAY	18
GROUND FLOOR AMENITIES	20
THIRD FLOOR AMENITIES	24
FOURTH FLOOR AMENITIES	28
PENTHOUSE AMENITIES	34
PANORAMIC VIEWS FROM THE 40TH FLOOR	38
THE PLAZA PROMISE	40
THE PURITY OF SUCCESS	42
PURCHASER LIAISON	44
FEATURES & FINISHES	46

YONGE AT HEART

Introducing Yonge at Wellesley Station, a modern condominium community rising 41 storeys in downtown Toronto's exciting Church and Wellesley neighbourhood. Sophisticated brickwork elevates and complements the streetscape before launching into a stunning glass and concrete façade, effusing dynamic urban movement. With a diverse array of culture at your doorstep and new experiences just around the corner, adventure calls to those who crave the energy of this incredible city.



BDP QUADRANGLE'S DYNAMIC ARCHITECTURE

BDP Quadrangle is a multidisciplinary architecture, master planning, and interior design practice based in Toronto, Canada. Projects span the spectrum of the built environment, focusing on mixed-use, residential, retail, commercial, content media and other projects. Quadrangle believes that beauty and business go together, working with clients to achieve thoughtful architecture and design.

Plaza and Quadrangle were proud to work together on 400 King West, Bijou and Plaza on Yonge.



BIJOU ON BLOOR



400 KING WEST

COLOURFUL CHURCH & WELLESLEY

Located in Toronto's vibrant Church and Wellesley neighbourhood, Yonge at Wellesley Station puts you in the heart of the city. Explore an eclectic mix of restaurants, cafes, boutiques and entertainment, all steps from your front door.



FOOD

1. Sambucas
2. Golden Diner
3. Stormcrow Manor
4. Edomae Kiyomi
5. Loaded Pierogi
6. Torch Sushi
7. North of Brooklyn
8. Church St. Garage
9. Craig's Cookies
10. The Croissant Tree
11. Kinton Ramen
12. Churchmouse and Firkin
13. Ginger
14. Fran's
15. The Cherie Bistro
16. The Keg Mansion
17. O.NOIR
18. Kintaro Izakaya

BARS & CAFÉS

19. The Drink
20. Piedmont Coffee Bar
21. Glad Day Bookshop
22. The Black Lodge Cocktail Bar
23. Pegasus Bar
24. Boutique Bar
25. Red Rocket Coffee

SHOPPING

26. Toronto Eaton Centre
27. Grapefruit
28. Out on the Street
29. H&M
30. Holt Renfrew
31. Marshalls & HomeSense

PET

32. Zen Dog Services
33. All Pets

GROCERIES

34. Maple Gardens Loblaws
35. Metro
36. Eatly
37. Pusateri Fruit Market
38. LCBO

SCHOOLS

39. Toronto Metropolitan University
40. University of Toronto
41. George Brown College
42. OCAD

PARKS

43. Queens Park
44. Allan Gardens

HOSPITALS

45. Toronto General
46. Sick Kids
47. Mt Sinai
48. St Michaels

LANDMARKS

49. Yorkville
50. Nathan Phillips Square
51. City Hall

ENTERTAINMENT

52. Royal Ontario Museum
53. Cineplex Cinemas Varsity
54. Gardiner Museum
55. Massey Hall
56. Cineplex Cinemas Yonge-Dundas
57. Imagine Cinemas
58. Gallery Arcturus

A MATTER OF TASTE



Toronto is a city known for its exceptional and eclectic restaurant scene, offering a smorgasbord of top-tier dining options. Nowhere is this more prevalent than Yonge at Wellesley Station, where an ever-shifting list of culinary delights surround you.



TORCH SUSHI
20 COLLEGE STREET



THE DRINK
489 CHURCH STREET



FRAN'S RESTAURANT
20 COLLEGE STREET



THE KEG MANSION
515 JARVIS STREET

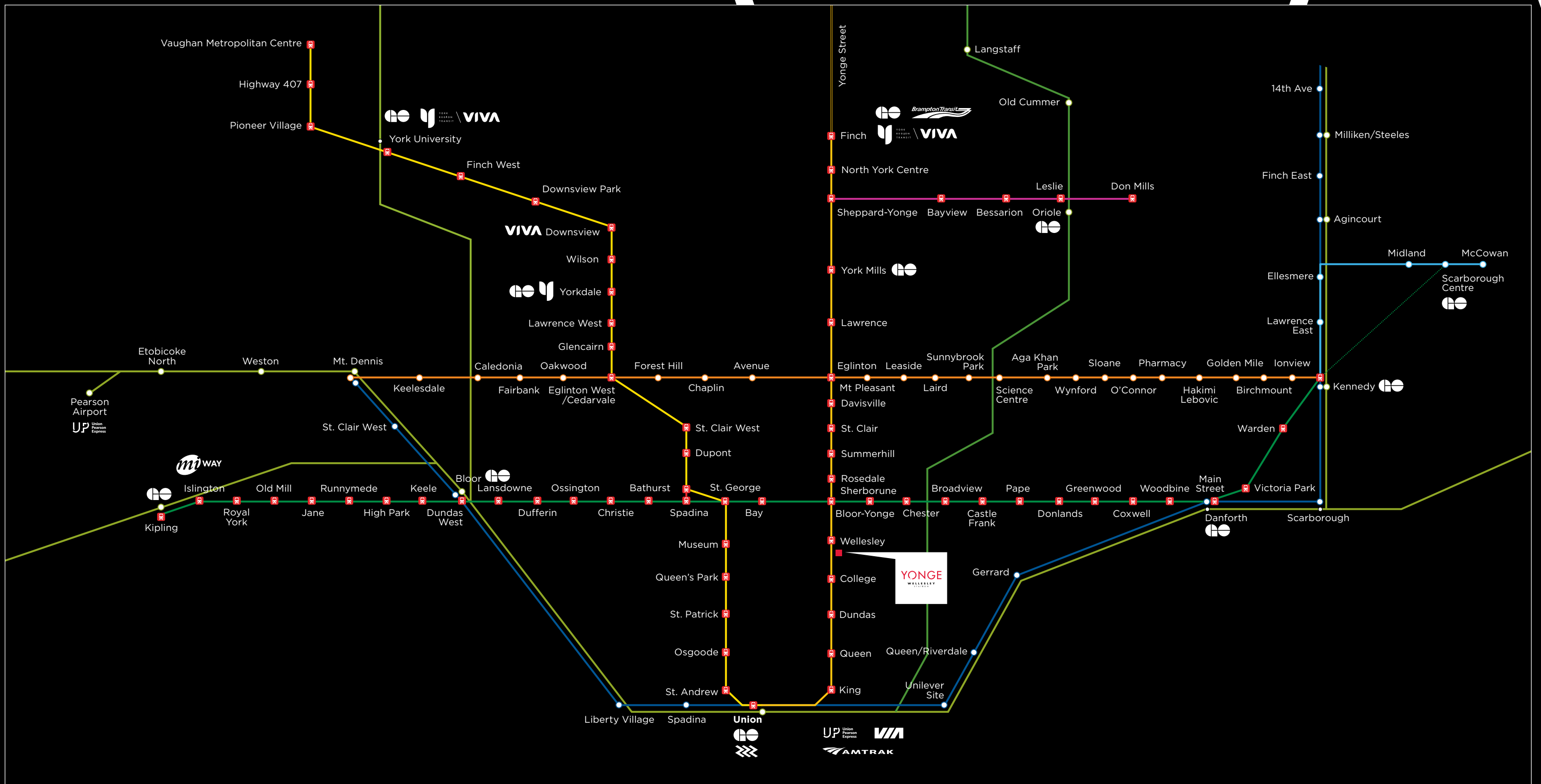


SAMBUCAS
489 CHURCH STREET

NEVER A DULL MOMENT,
THE AREA AROUND YONGE &
WELLESLEY WILL KEEP YOU
COMING BACK FOR ITS
INSPIRING CULINARY SCENE.

CONNECTIVITY MADE EASY

Living so close to Wellesley subway station puts you in a unique position to explore everything the GTA has to offer at your convenience. Connect effortlessly with LRT lines, UP Express or Go Transit and expand your options, getting anywhere you need to go. Additionally, with new subway expansions and the upcoming Ontario Line planned, new experiences will be closer than ever.



MARKED WITH DISTINCTION

Yonge at Wellesley Station stands as a striking architectural recreation of Church and Wellesley's beloved effervescent energy. The ground level features russet brickwork, maintaining a cohesive look for the streetscape, while standing apart with distinctive black mullion frames, customized frit patterning and elegant canopies for retail and residential entrances. The ground floor also offers 2-storey units that enjoy full views of the landscaped West side park space. The tower itself boasts expansive window walls separated by angled concrete piers that create a stunning wave pattern on the North and South façades.



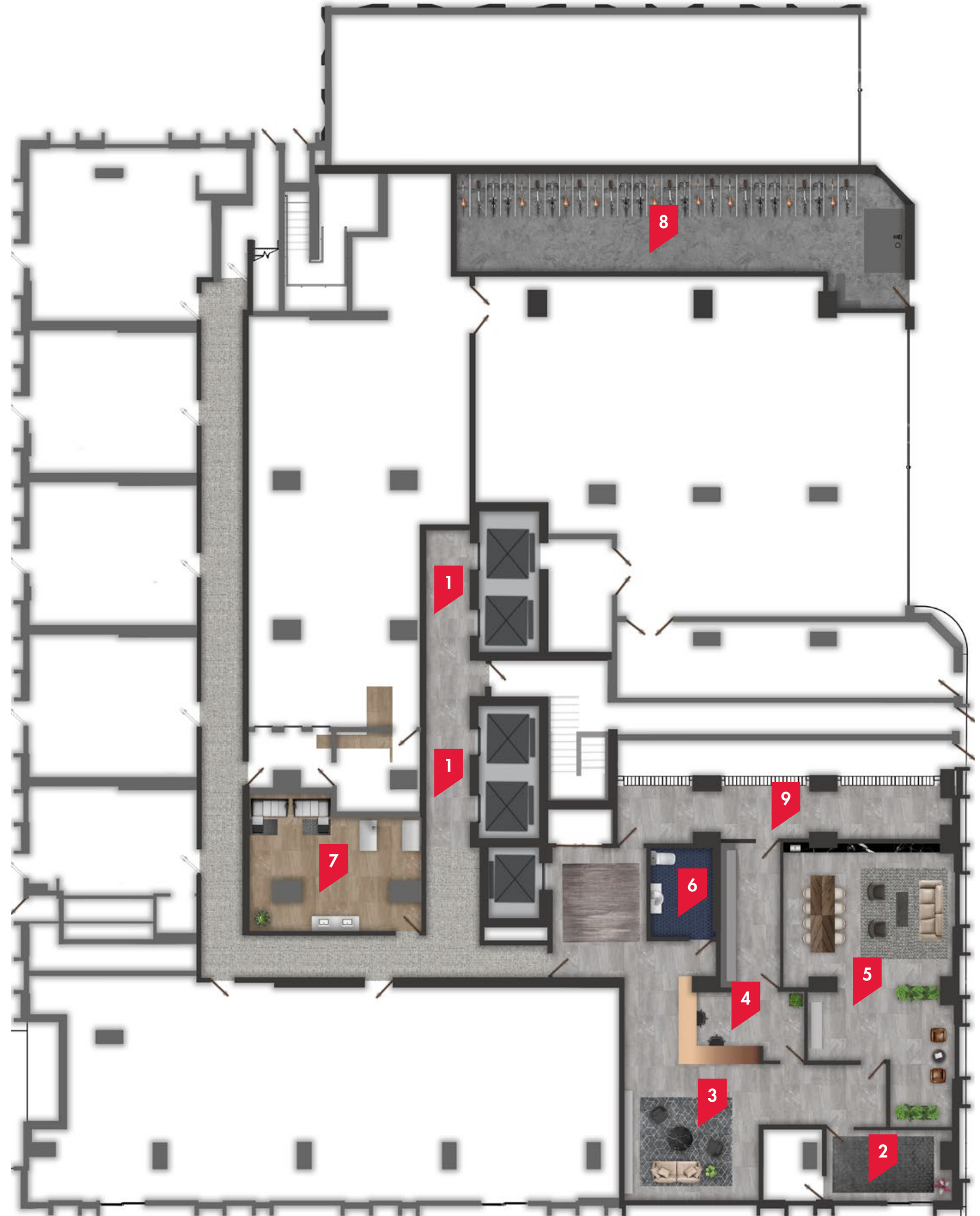
AMENITIES

EXCEPTIONAL AMENITIES FOR YOUR DAY-TO-DAY

Whether you're hoping to work up a sweat, put the finishing touches on a project or lounge the day away, Yonge at Wellesley Station provides you with a wide variety of high-end amenities to serve every need. Spread over four floors, these comforts elevate the everyday – providing thoughtfully-designed spaces for creativity, wellness and relaxation.

GROUND FLOOR AMENITIES

- 1. ELEVATORS
- 2. VESTIBULE
- 3. LOBBY
- 4. CONCIERGE
- 5. LOUNGE
- 6. UNIVERSAL WASHROOM
- 7. PET SPA
- 8. BICYCLE SPACES
- 9. MAIL ROOM



GROUND FLOOR



PET SPA

LOBBY

Taking full advantage of expansive South-facing windows, Yonge at Wellesley Station's expansive Lobby showcases a curated art collection and sculptural furnishings. Over-scaled finishes create a seamless look that radiates sophistication through the distinctive contrast of colours, texture and materiality.

LOUNGE

Flowing harmoniously from the exterior's architectural design cues, the Lounge's distinct finish palette establishes a welcoming atmosphere that encourages great conversation in this easy-to-reach space.

PET SPA

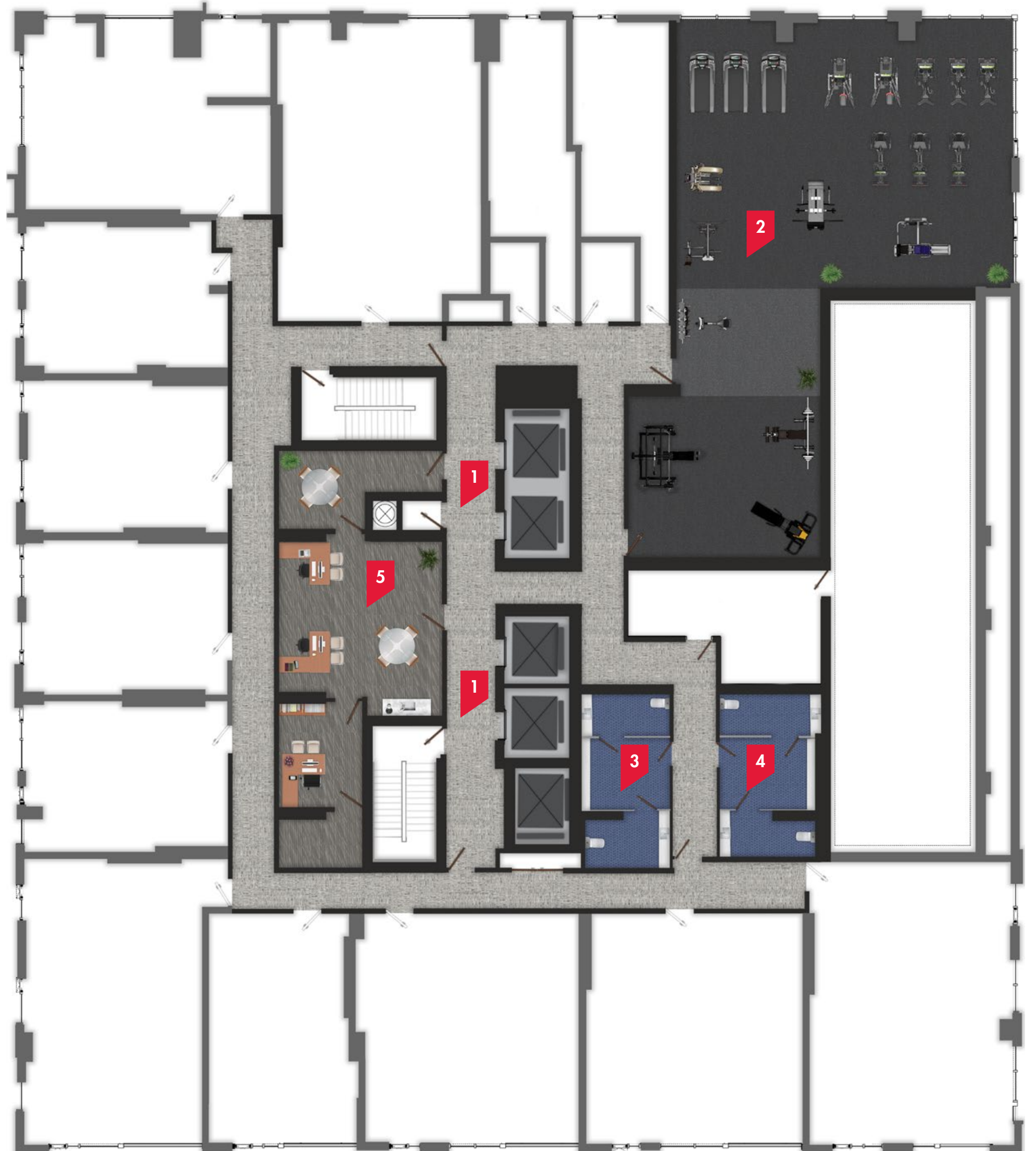
Pampering your pet has never been easier. Keep furry friends clean and healthy from snout to tail with Yonge at Wellesley Station's Pet Spa.

BIKE STORAGE

Simplify your city commute and cycle! Conveniently located on the ground level residents have access to a large bicycle storage and repair room.

THIRD FLOOR AMENITIES

- 1. ELEVATORS
- 2. FITNESS STUDIO
- 3. MEN'S CHANGE ROOM
- 4. WOMEN'S CHANGE ROOM
- 5. MANAGEMENT



THIRD FLOOR



GYM

GYM

The Gym comes fully outfitted with state-of-the-art equipment, ample room, large mirrors and flattering lighting, complemented by a naturally inspired design scheme to accommodate your health and wellness needs.

GUEST SUITES

Keep your friends and family close by next time they visit with Guest Suites that offer the same high-end features and finishes you enjoy.

FOURTH FLOOR AMENITIES

1. ELEVATORS
2. CHILDREN'S PLAY AREA
3. YOGA ROOM
4. STUDY AREA
5. KITCHEN
6. SEATING & BBQ AREA
7. DINING ROOM
8. MEN'S CHANGE ROOM
9. WOMEN'S CHANGE ROOM
10. UNIVERSAL WASHROOM
11. EVENT SPACE
12. BAR
13. POOL



FOURTH FLOOR DESIGN

The entire fourth floor of Yonge at Wellesley Station is filled with generous interior and exterior amenities fashioned after a diverse mix of cultures. From the Moorish-inspired spa areas to the classically-inspired geometry of the event spaces, or the lush and moody private dining room, all these areas flow flawlessly from one to the other. As day turns to night, you can feel the mood change as the spaces transform with thoughtfully-considered layers of lighting.

FOURTH FLOOR



GAMES AREA

YOGA STUDIO

When it's time to escape from the hustle and bustle, make your way to the Yoga Studio. This tranquil space will help you re-centre and re-energize.

STUDY AREA

Intentionally designed to provide a quiet space and encourage creative thinking, the Study Area is your spot to get things done.

EVENT SPACE

Planning your next big get-together? Look no further than our elegant Event Space, providing you with the best spot in the city.

DINING ROOM

Take advantage of Yonge at Wellesley Station's classically inspired Dining Room space and be the host with the most for your next dinner.

GAMES AREA

Nothing beats a friendly game between friends! Challenge your favourite people to a round or two in Yonge at Wellesley Station's chic Games Area.

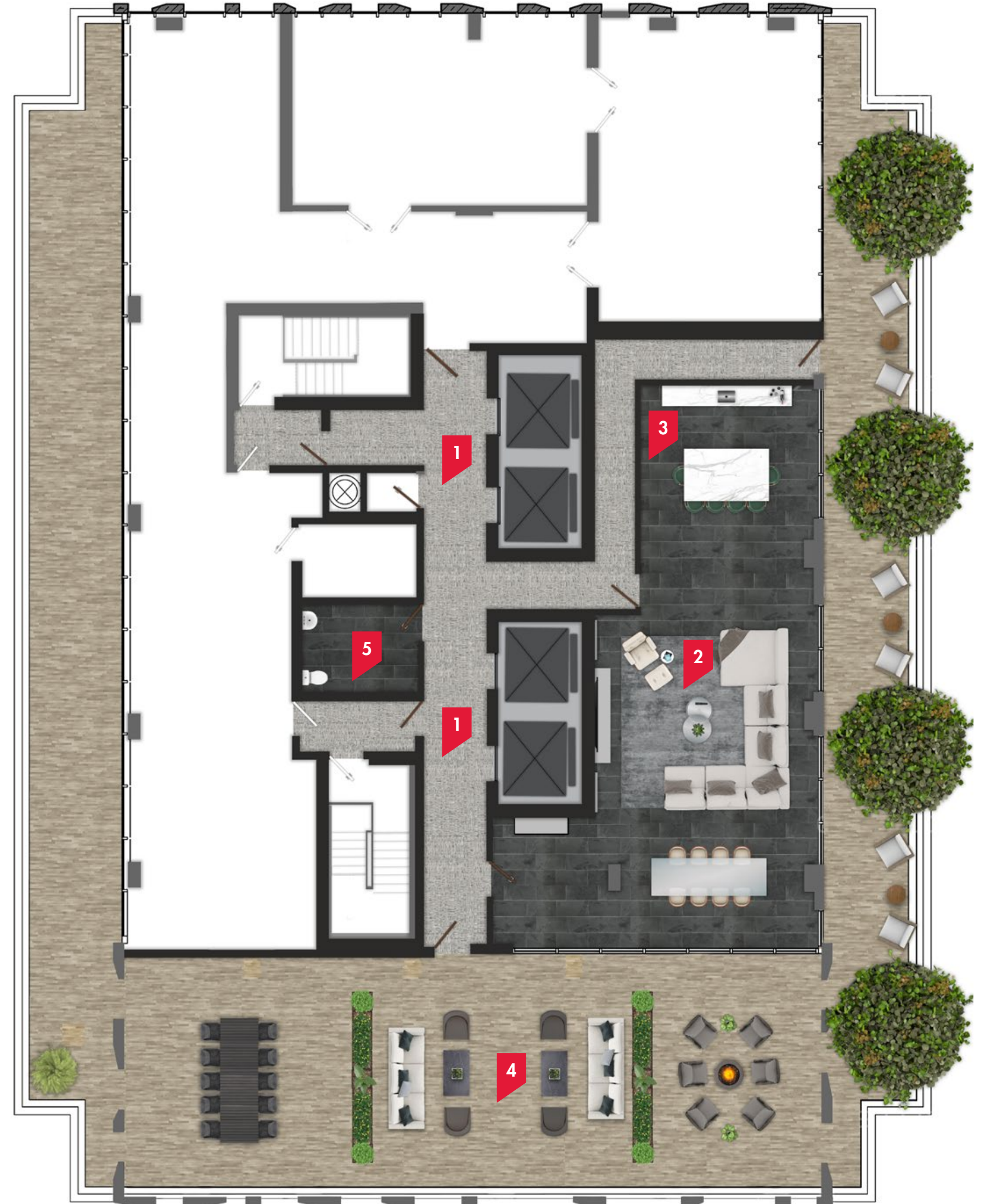
POOL & PATIO

This huge wraparound Patio offers a great place to get out and catch some sun. Plus, with the Pool and BBQ Areas readily available, summers just got that much better.



PENTHOUSE AMENITIES

- 1. ELEVATORS
- 2. EVENT SPACE
- 3. BAR
- 4. ROOFTOP DECK
- 5. UNIVERSAL WASHROOM





EVENT SPACE AND ROOFTOP DECK

Get the party started at the large penthouse Event Space and South-facing Rooftop Deck. Luscious finishes throughout set the tone for a fearless and bold space, with saturated colours and carefully considered details chosen to create and heighten the connection between the Event Space and the shimmering city skyline beyond.

PANORAMIC VIEWS FROM THE 40TH FLOOR



SOUTH



SOUTH EAST

THE PLAZA PROMISE

WE PROMISE TO ALWAYS BUILD WHAT WE SELL. TO TREAT OUR CUSTOMERS HOW WE WISH TO BE TREATED. TO DELIVER QUALITY HOMES OF LASTING VALUE.

Congratulations on choosing a Plaza home. When you partner with Plaza, you partner with the preferred high-rise builder of new homeowners. Presented by Tarion, The Homeowners' Choice Awards celebrate building excellence in Ontario. We're grateful to have been recognized by our homeowners for our premier customer care and customer service. Your satisfaction is our greatest achievement.

Proudly Voted By Our Homeowners The 2018 and 2020 High-Rise Builder Of The Year.



THE PURITY OF SUCCESS

LASTING VALUE AS A STANDARD FEATURE

Since 1982, the Plaza philosophy of providing a uniformly high level of standard quality in every condominium we build has made our name synonymous with lasting value. We were among the first condominium developers and builders in Toronto to include such finishes as granite counters and floors, marble bathroom counters and floors, halogen lighting, undermount sinks, porcelain tile, engineered hardwood floors and stainless steel appliances as standard features rather than costly upgrades. Building in more quality from the beginning is a hallmark of every Plaza community, which has resulted in condominium suites that have greater market value today, and have lasting value for tomorrow.

OPPOSITE PAGE: THEATRE DISTRICT, NOW UNDER CONSTRUCTION

PLAZA[®]



YOUR SATISFACTION GUARANTEED

We ensure hands-on customer service at every step of the way. Your dedicated Plaza purchaser liaison makes sure you are well informed about your new home. From financial obligations, warranty and maintenance procedures to the legal aspects of your home ownership, we've got your questions answered. Our Plaza name is synonymous with lasting value and our customer care approach is synonymous with your lasting satisfaction.



FEATURES & FINISHES

At Yonge at Wellesley Station, you will be surrounded by superior level of quality that provides you with lasting value in design, architecture, materials and finishes in every area of your new home.

- 24-hour concierge
- Security coded access FOB for all residents
- Two guest suites provided for residents' use
- Extensive indoor and outdoor lifestyle amenities
- Individual suite hydro, BTU and water metering
- Airy 9' high, smooth-finish ceilings as per plan
- Engineered laminate flooring throughout
- Colour palettes and finishes chosen by a professional designer
- Sleek custom cabinetry designed with a selection of contemporary finishes and choices of quartz countertops
- Appliance package including stove, stainless-steel refrigerator, panel ready dishwasher and wall mounted microwave hood range
- Stacked front-loading washer and dryer
- Soft-closing kitchen cabinetry
- Stainless steel, undermount sink with Moen single lever faucet in kitchen
- Ceramic or porcelain tile flooring in bathrooms
- Spacious soaker tubs and frameless glass door on standalone showers, as per plan
- Moen faucets in bathroom
- Window coverings throughout



PUREPLAZA.COM

