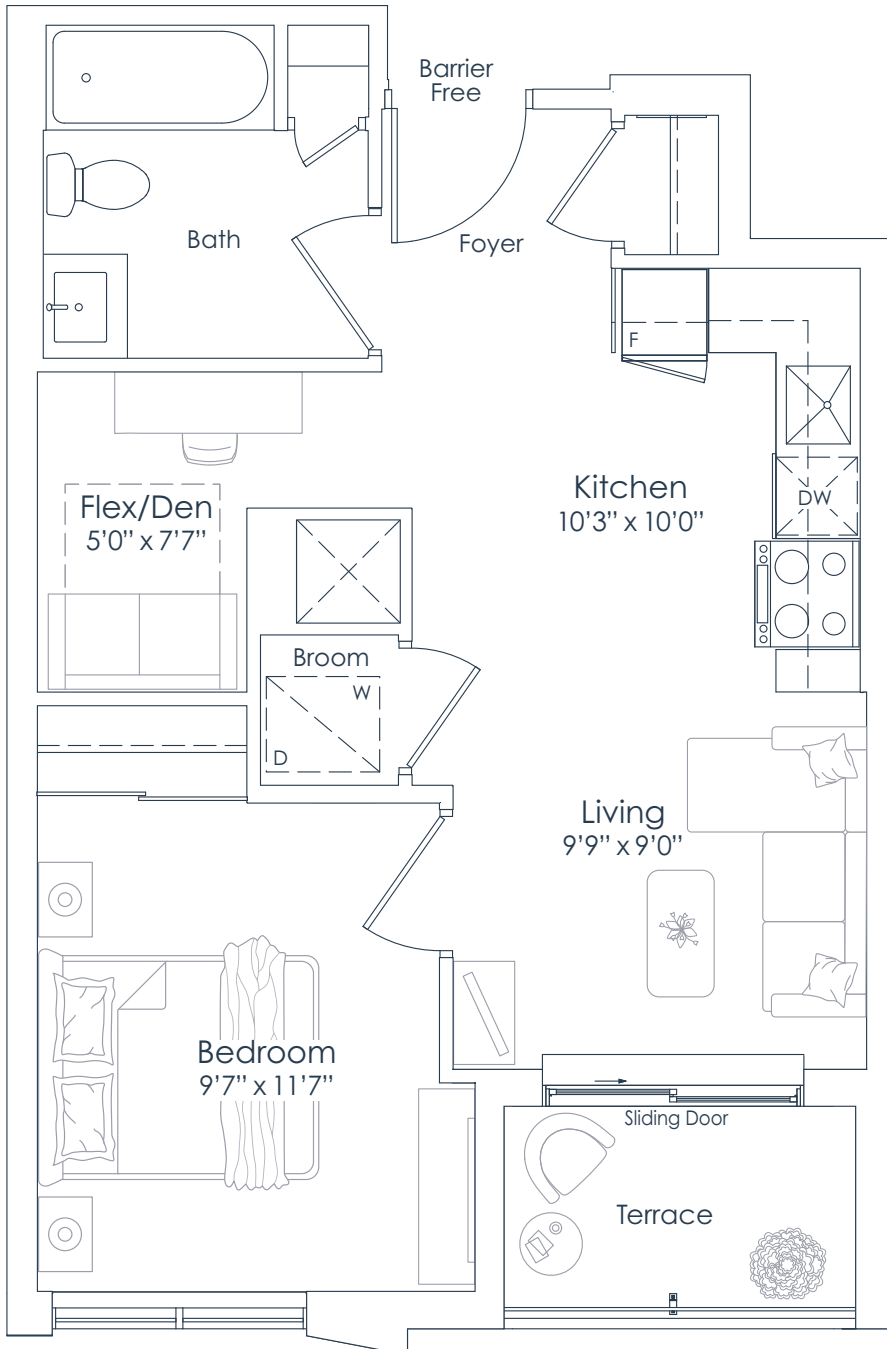




NORTHSHORE

INTERIOR: 552 SF
EXTERIOR: 37 SF
TOTAL: 589 SF
FLOOR: 2

552
1 BEDROOM+DEN



FLOOR 2

This plan is not to scale and is subject to architectural review and revision. All details are approximate and subject to change without notice in order to comply with building site conditions and municipal, structural, architectural and/or Vendor requirements. Balconies and/or terraces, if any, are exclusive use common elements, shown for display purposes only and location, size and design of such are subject to change without notice. Actual unit and/or balcony and/or terrace may be a reverse mirror image of the plan presented. Units may include bulkheads, angled windows and/or angled columns. The location, size and type of windows, view treatments (including frit patterning, mullion/metal panel placement or other visual treatments) and exterior building elements may vary without notice. Suites are sold unfurnished. All illustrations are artist concept only. E.& O.E. April 2023 **1A+D-T (BF)**

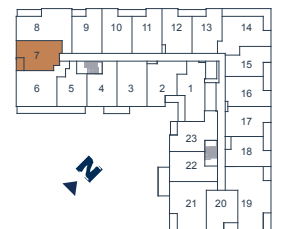
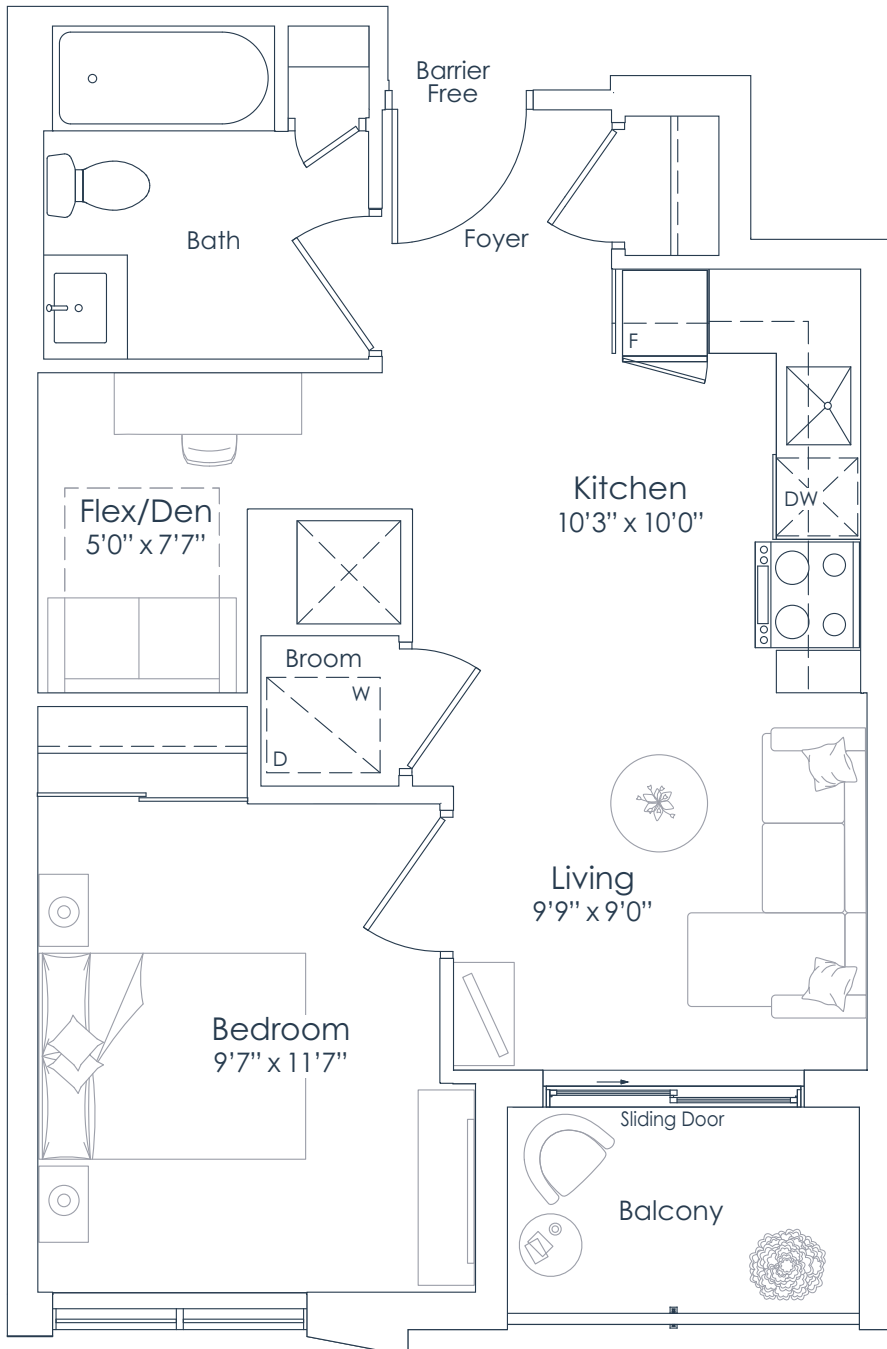
NATIONAL
H O M E S
You are the blueprint™



NORTHSHORE

INTERIOR: 552 SF
EXTERIOR: 37 SF
TOTAL: 589 SF
FLOORS: 3 TO 6

552
1 BEDROOM+DEN



FLOORS 3 TO 6

This plan is not to scale and is subject to architectural review and revision. All details are approximate and subject to change without notice in order to comply with building site conditions and municipal, structural, architectural and/or Vendor requirements. Balconies and/or terraces, if any, are exclusive use common elements, shown for display purposes only and location, size and design of such are subject to change without notice. Actual unit and/or balcony and/or terrace may be a reverse mirror image of the plan presented. Units may include bulkheads, angled windows and/or angled columns. The location, size and type of windows, view treatments (including frit patterning, mullion/metal panel placement or other visual treatments) and exterior building elements may vary without notice. Suites are sold unfurnished. All illustrations are artist concept only. E.& O.E. April 2023 **1A+D-B (BF)**

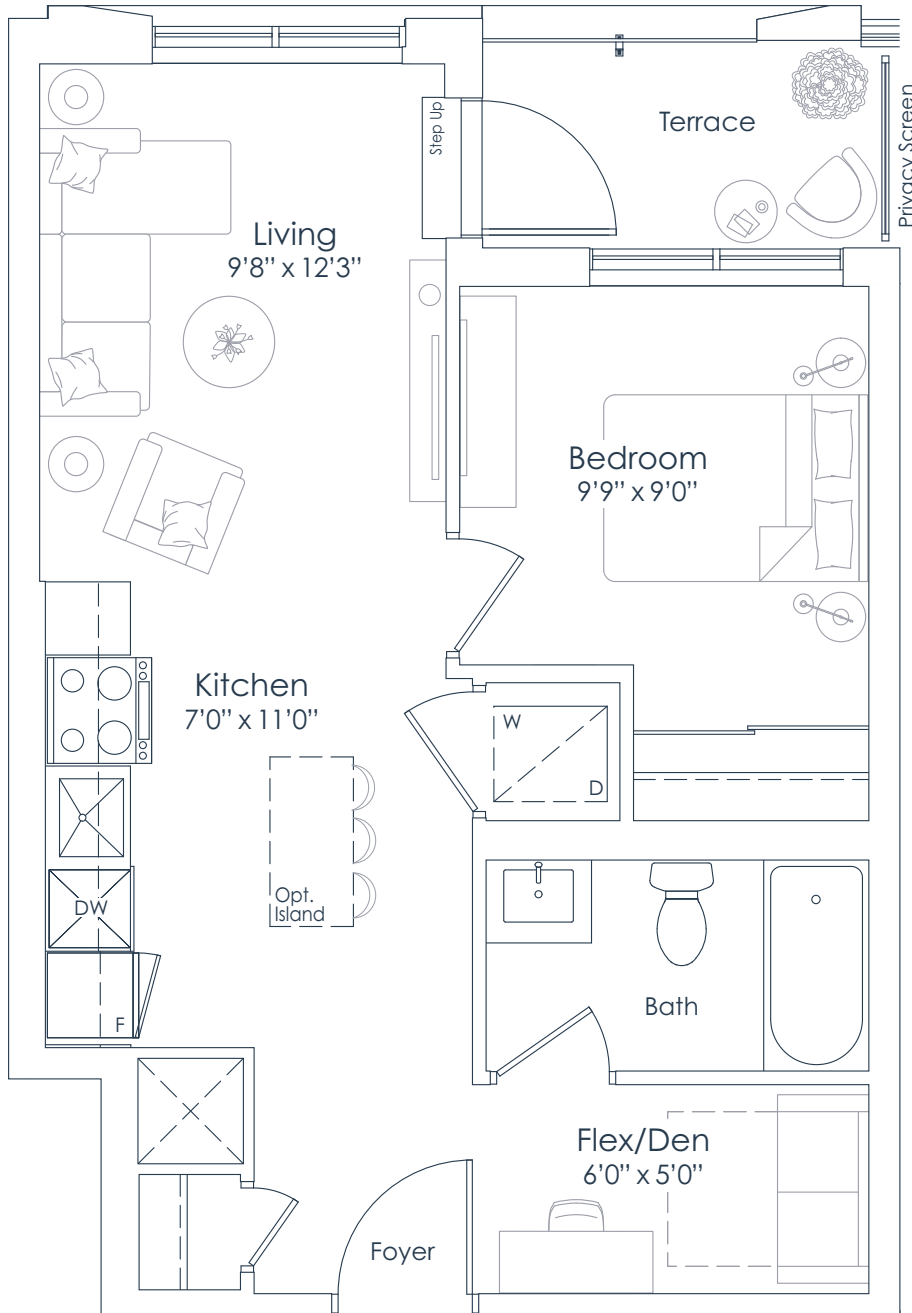
NATIONAL
H O M E S
You are the blueprint™



NORTHSHORE

INTERIOR: 554 SF
EXTERIOR: 43 SF
TOTAL: 597 SF
FLOOR: 2

554
1 BEDROOM+DEN



FLOOR 2

This plan is not to scale and is subject to architectural review and revision. All details are approximate and subject to change without notice in order to comply with building site conditions and municipal, structural, architectural and/or Vendor requirements. Balconies and/or terraces, if any, are exclusive use common elements, shown for display purposes only and location, size and design of such are subject to change without notice. Actual unit and/or balcony and/or terrace may be a reverse mirror image of the plan presented. Units may include bulkheads, angled windows and/or angled columns. The location, size and type of windows, view treatments (including frit patterning, mullion/metal panel placement or other visual treatments) and exterior building elements may vary without notice. Suites are sold unfurnished. All illustrations are artist concept only. E.& O.E. April 2023 **1B+D-T**

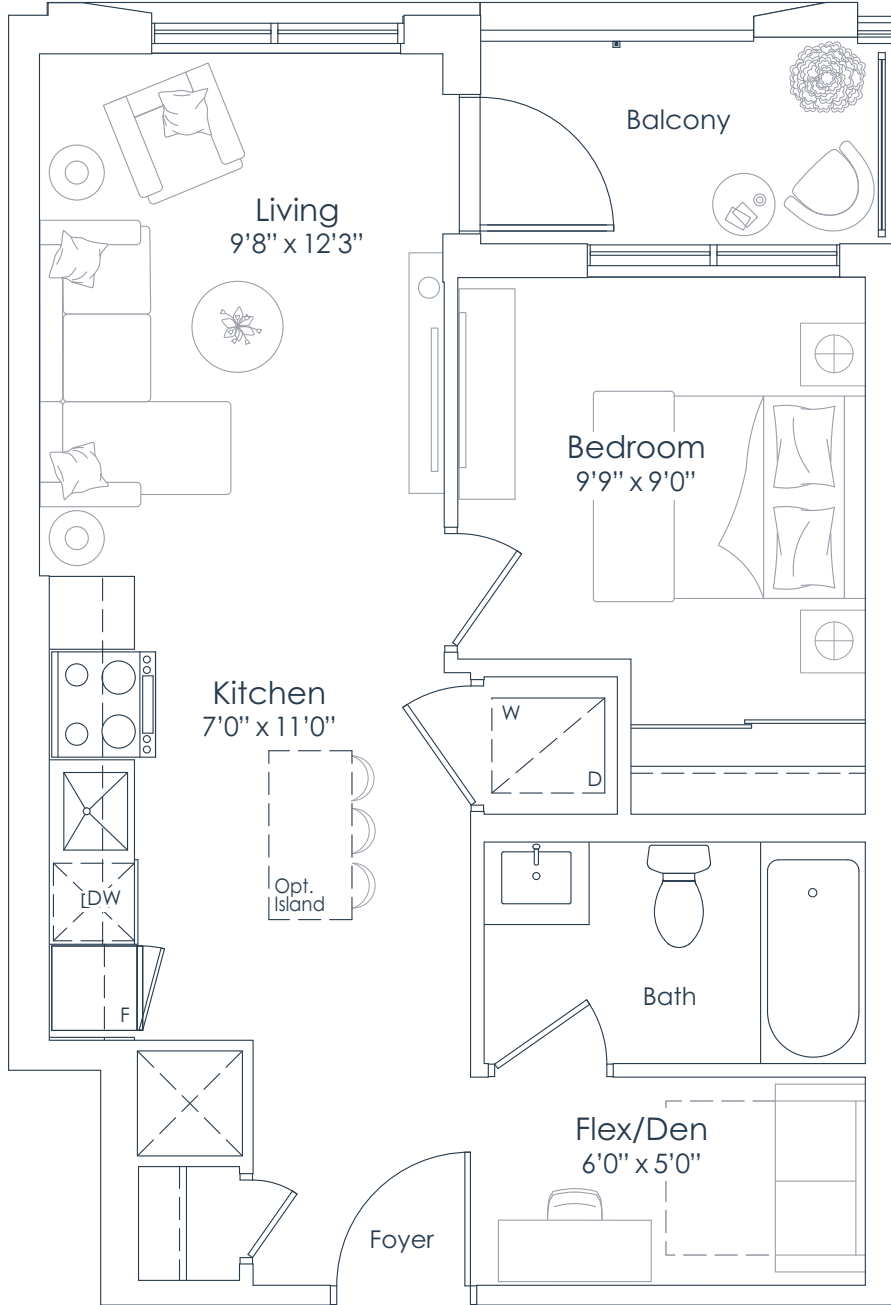
NATIONAL
H O M E S
You are the blueprint™



NORTHSHORE

INTERIOR: 554 SF
EXTERIOR: 43 SF
TOTAL: 597 SF
FLOORS: 3 TO 6

554
1 BEDROOM+DEN



FLOORS 3 TO 6

This plan is not to scale and is subject to architectural review and revision. All details are approximate and subject to change without notice in order to comply with building site conditions and municipal, structural, architectural and/or Vendor requirements. Balconies and/or terraces, if any, are exclusive use common elements, shown for display purposes only and location, size and design of such are subject to change without notice. Actual unit and/or balcony and/or terrace may be a reverse mirror image of the plan presented. Units may include bulkheads, angled windows and/or angled columns. The location, size and type of windows, view treatments (including frit patterning, mullion/metal panel placement or other visual treatments) and exterior building elements may vary without notice. Suites are sold unfurnished. All illustrations are artist concept only. E.& O.E. April 2023 **1B+D-B**

NATIONAL
H O M E S

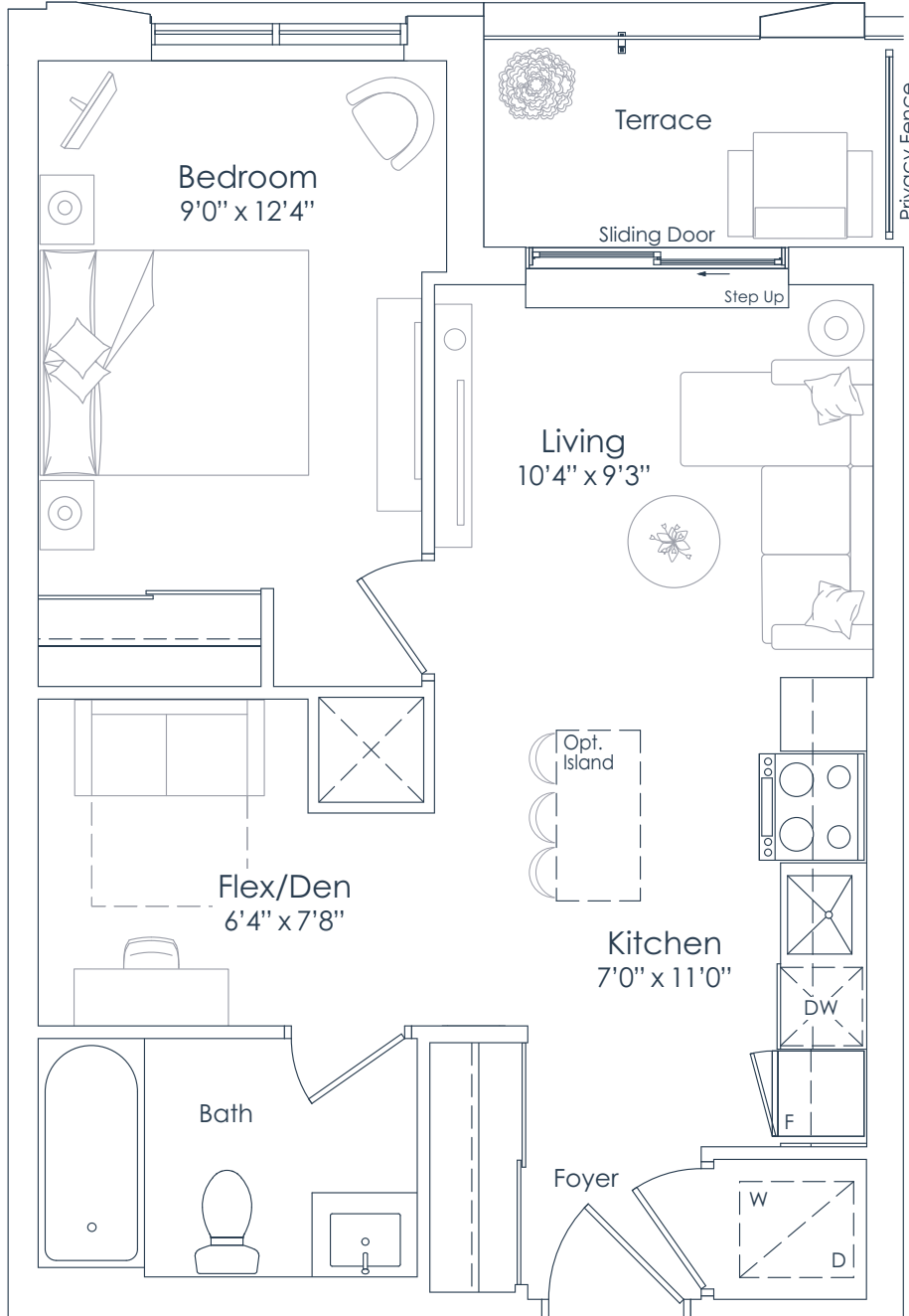
You are the blueprint™



NORTHSHORE

INTERIOR: 567 SF
EXTERIOR: 43 SF
TOTAL: 610 SF
FLOOR: 2

567
1 BEDROOM+DEN



FLOOR 2

This plan is not to scale and is subject to architectural review and revision. All details are approximate and subject to change without notice in order to comply with building site conditions and municipal, structural, architectural and/or Vendor requirements. Balconies and/or terraces, if any, are exclusive use common elements, shown for display purposes only and location, size and design of such are subject to change without notice. Actual unit and/or balcony and/or terrace may be a reverse mirror image of the plan presented. Units may include bulkheads, angled windows and/or angled columns. The location, size and type of windows, view treatments (including frit patterning, mullion/metal panel placement or other visual treatments) and exterior building elements may vary without notice. Suites are sold unfurnished. All illustrations are artist concept only. E.& O.E. April 2023 **1C+D-T**

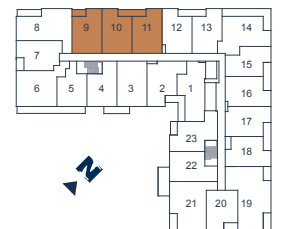
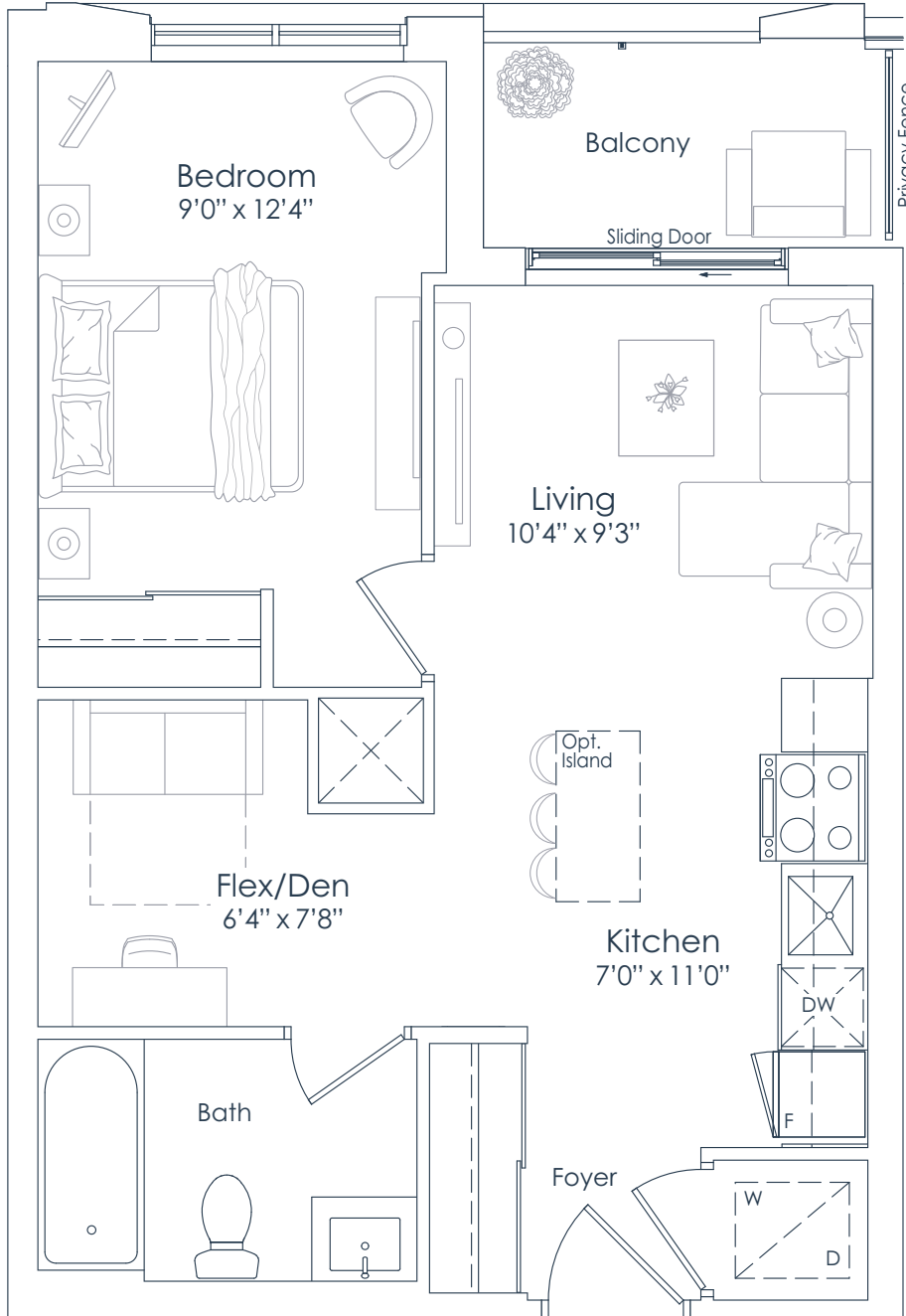
NATIONAL
H O M E S
You are the blueprint™



NORTHSHORE

INTERIOR: 567 SF
EXTERIOR: 43 SF
TOTAL: 610 SF
FLOORS: 3 TO 6

567
1 BEDROOM+DEN



FLOORS 3 TO 6

This plan is not to scale and is subject to architectural review and revision. All details are approximate and subject to change without notice in order to comply with building site conditions and municipal, structural, architectural and/or Vendor requirements. Balconies and/or terraces, if any, are exclusive use common elements, shown for display purposes only and location, size and design of such are subject to change without notice. Actual unit and/or balcony and/or terrace may be a reverse mirror image of the plan presented. Units may include bulkheads, angled windows and/or angled columns. The location, size and type of windows, view treatments (including frit patterning, mullion/metal panel placement or other visual treatments) and exterior building elements may vary without notice. Suites are sold unfurnished. All illustrations are artist concept only. E.& O.E. April 2023 **1C+D-B**

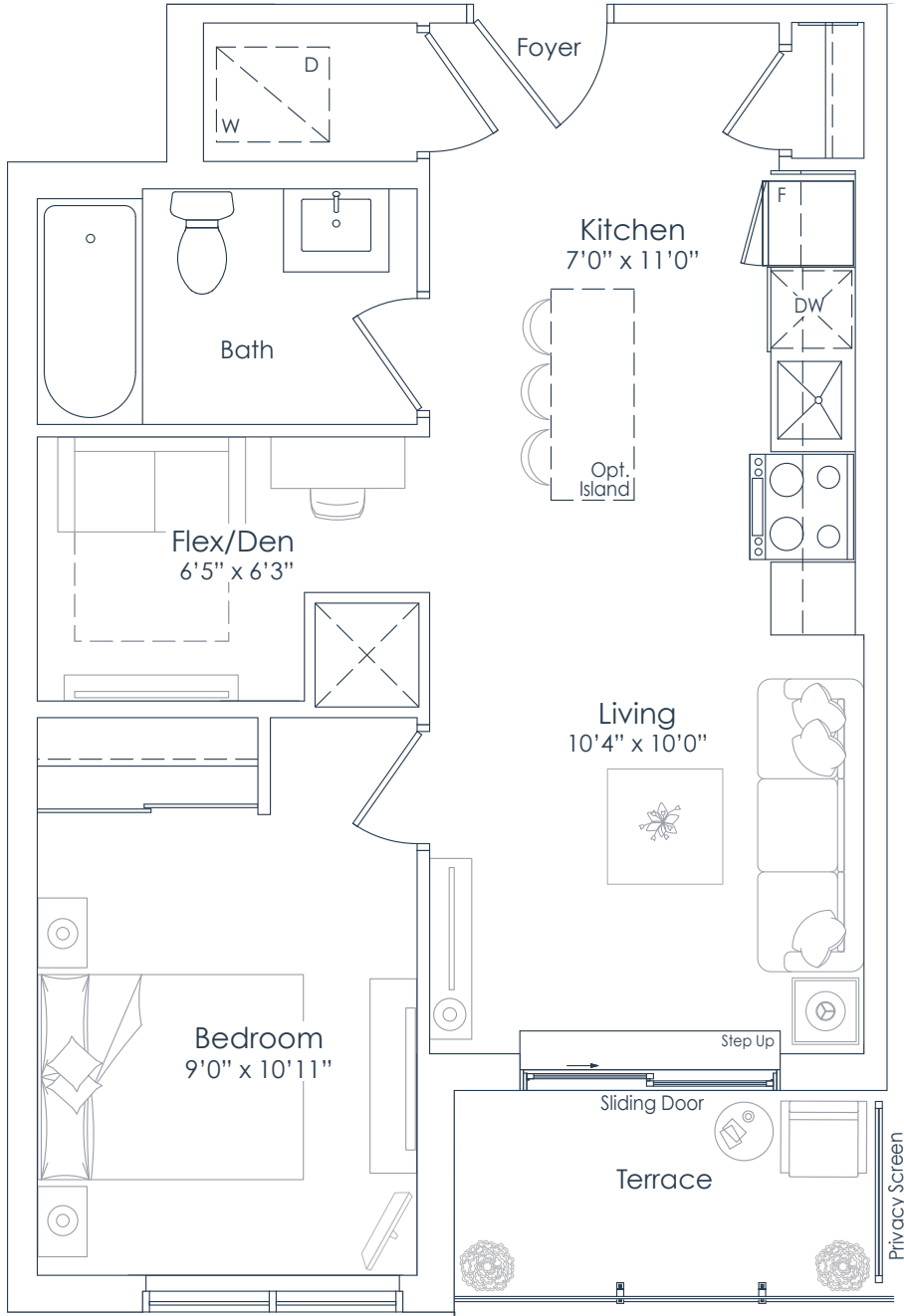
NATIONAL
H O M E S
You are the blueprint™



NORTHSHORE

INTERIOR: 574 SF
EXTERIOR: 43 SF
TOTAL: 617 SF
FLOOR: 2

574
1 BEDROOM+DEN



FLOOR 2

This plan is not to scale and is subject to architectural review and revision. All details are approximate and subject to change without notice in order to comply with building site conditions and municipal, structural, architectural and/or Vendor requirements. Balconies and/or terraces, if any, are exclusive use common elements, shown for display purposes only and location, size and design of such are subject to change without notice. Actual unit and/or balcony and/or terrace may be a reverse mirror image of the plan presented. Units may include bulkheads, angled windows and/or angled columns. The location, size and type of windows, view treatments (including frit patterning, mullion/metal panel placement or other visual treatments) and exterior building elements may vary without notice. Suites are sold unfurnished. All illustrations are artist concept only. E.& O.E. April 2023 **1D+D-T**

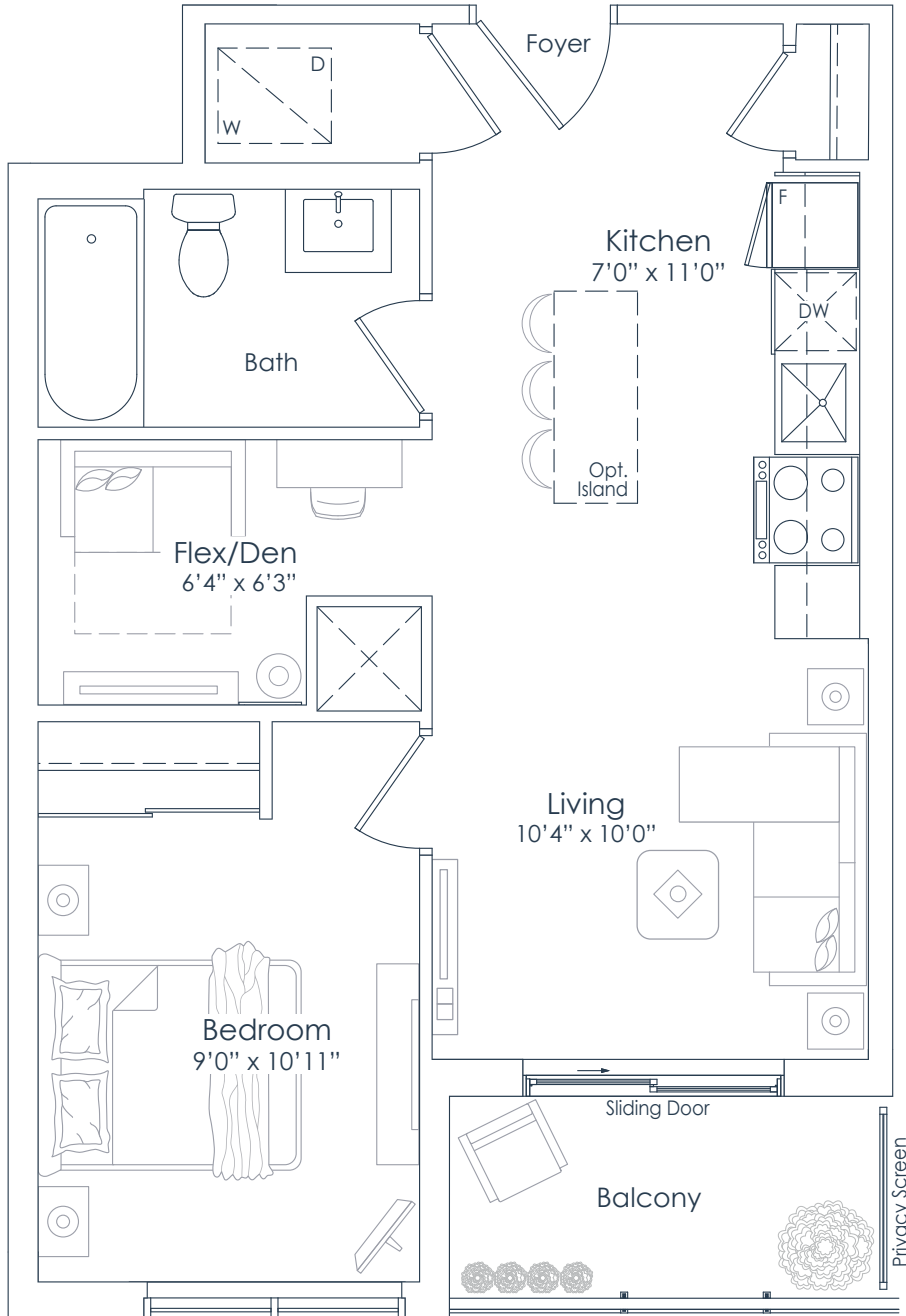
NATIONAL
H O M E S
You are the blueprint™



NORTHSHORE

INTERIOR: 574 SF
EXTERIOR: 43 SF
TOTAL: 617 SF
FLOORS: 3 TO 8

574
1 BEDROOM+DEN



FLOORS 7 TO 8



FLOORS 3 TO 6

This plan is not to scale and is subject to architectural review and revision. All details are approximate and subject to change without notice in order to comply with building site conditions and municipal, structural, architectural and/or Vendor requirements. Balconies and/or terraces, if any, are exclusive use common elements, shown for display purposes only and location, size and design of such are subject to change without notice. Actual unit and/or balcony and/or terrace may be a reverse mirror image of the plan presented. Units may include bulkheads, angled windows and/or angled columns. The location, size and type of windows, view treatments (including frit patterning, mullion/metal panel placement or other visual treatments) and exterior building elements may vary without notice. Suites are sold unfurnished. All illustrations are artist concept only. E.& O.E. April 2023 **1D+D-B**

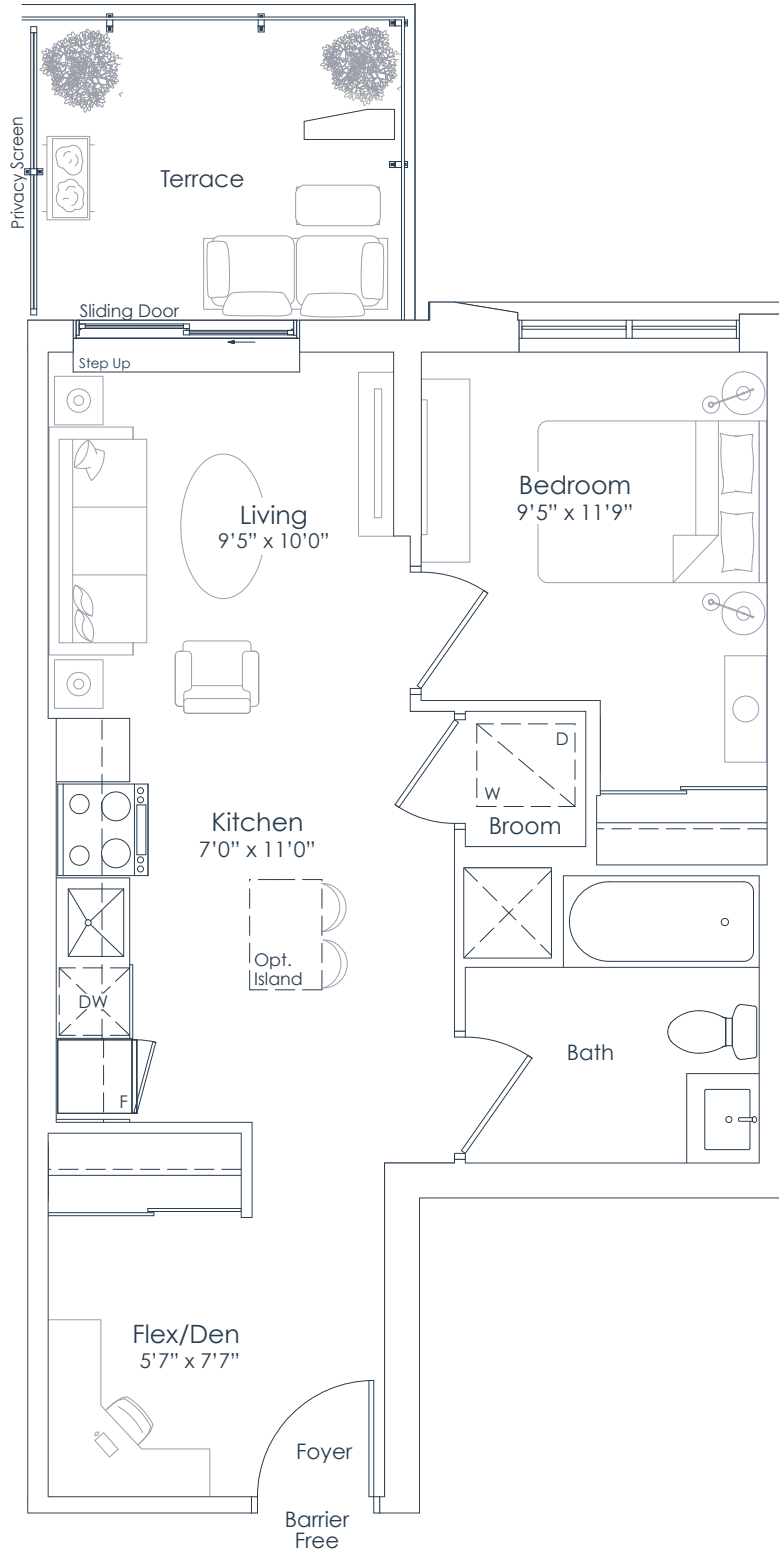
NATIONAL
H O M E S
You are the blueprint™



NORTHSHORE

INTERIOR: 576 SF
EXTERIOR: 75 SF
TOTAL: 651 SF
FLOOR: 3

576
1 BEDROOM+DEN



This plan is not to scale and is subject to architectural review and revision. All details are approximate and subject to change without notice in order to comply with building site conditions and municipal, structural, architectural and/or Vendor requirements. Balconies and/or terraces, if any, are exclusive use common elements, shown for display purposes only and location, size and design of such are subject to change without notice. Actual unit and/or balcony and/or terrace may be a reverse mirror image of the plan presented. Units may include bulkheads, angled windows and/or angled columns. The location, size and type of windows, view treatments (including frit patterning, mullion/metal panel placement or other visual treatments) and exterior building elements may vary without notice. Suites are sold unfurnished. All illustrations are artist concept only. E.& O.E. April 2023 **1E+D-T (BF)**

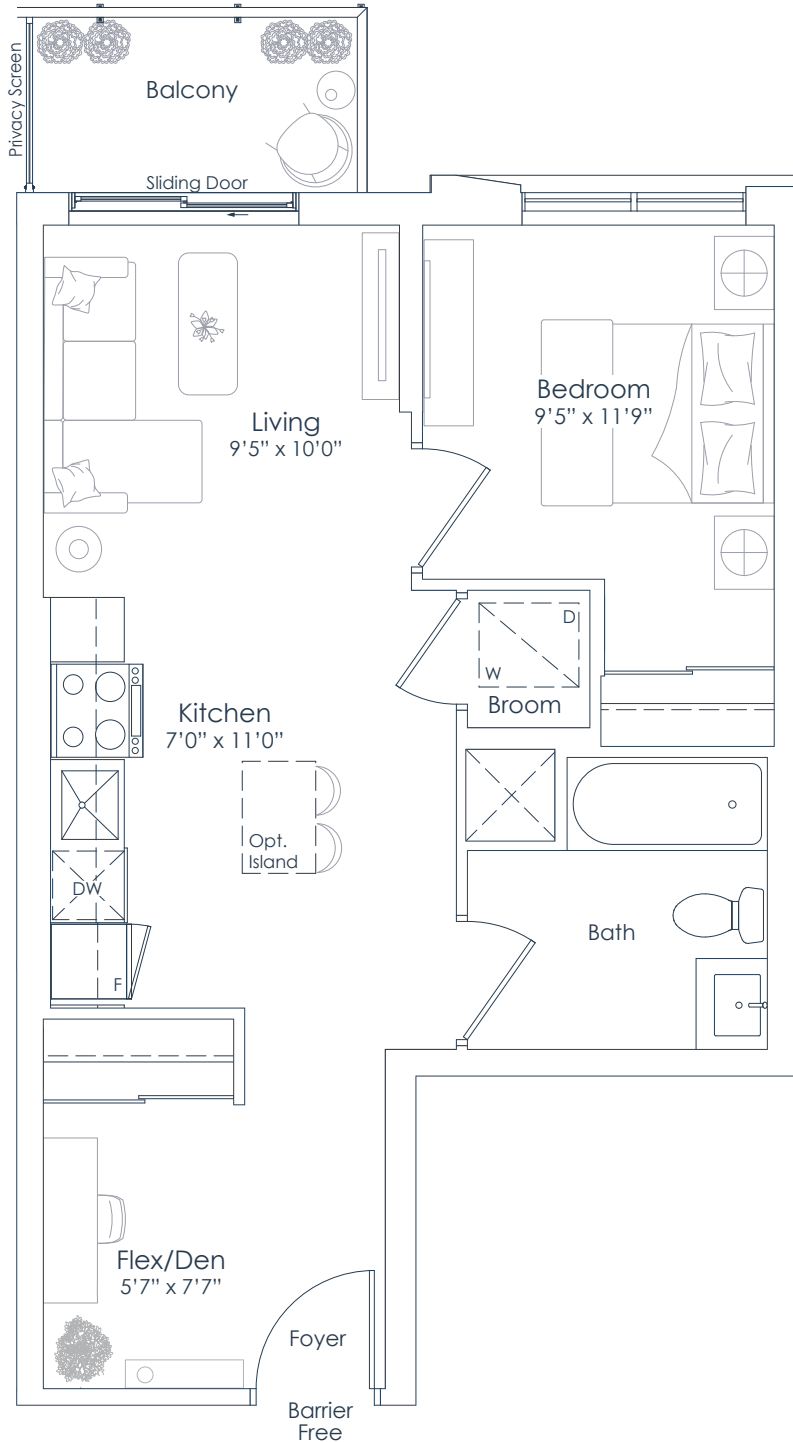
NATIONAL
H O M E S
You are the blueprint™



NORTHSHORE

INTERIOR: 576 SF
EXTERIOR: 41 SF
TOTAL: 617 SF
FLOORS: 4 TO 6

576
1 BEDROOM+DEN



FLOORS 4 TO 6

This plan is not to scale and is subject to architectural review and revision. All details are approximate and subject to change without notice in order to comply with building site conditions and municipal, structural, architectural and/or Vendor requirements. Balconies and/or terraces, if any, are exclusive use common elements, shown for display purposes only and location, size and design of such are subject to change without notice. Actual unit and/or balcony and/or terrace may be a reverse mirror image of the plan presented. Units may include bulkheads, angled windows and/or angled columns. The location, size and type of windows, view treatments (including frit patterning, mullion/metal panel placement or other visual treatments) and exterior building elements may vary without notice. Suites are sold unfurnished. All illustrations are artist concept only. E.& O.E. April 2023 **1E+D-B (BF)**

NATIONAL
H O M E S
You are the blueprint™

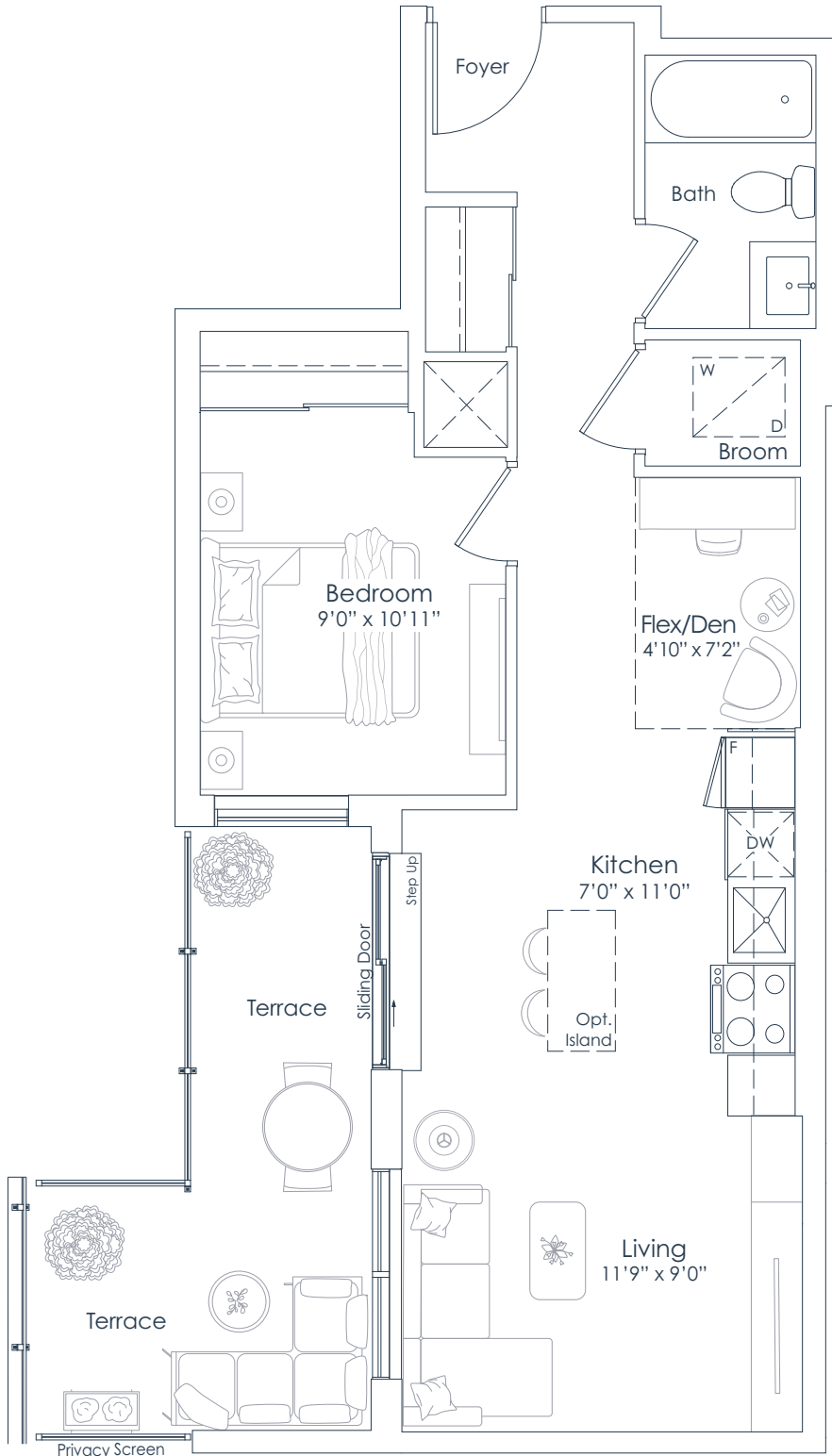


NORTHSHORE

INTERIOR: 618 SF
EXTERIOR: 125 SF
TOTAL: 743 SF
FLOOR: 2

618

1 BEDROOM+DEN



FLOOR 2

This plan is not to scale and is subject to architectural review and revision. All details are approximate and subject to change without notice in order to comply with building site conditions and municipal, structural, architectural and/or Vendor requirements. Balconies and/or terraces, if any, are exclusive use common elements, shown for display purposes only and location, size and design of such are subject to change without notice. Actual unit and/or balcony and/or terrace may be a reverse mirror image of the plan presented. Units may include bulkheads, angled windows and/or angled columns. The location, size and type of windows, view treatments (including frit patterning, mullion/metal panel placement or other visual treatments) and exterior building elements may vary without notice. Suites are sold unfurnished. All illustrations are artist concept only. E.& O.E. April 2023 **1F+D-T**

NATIONAL
H O M E S

You are the blueprint™

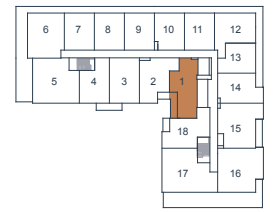
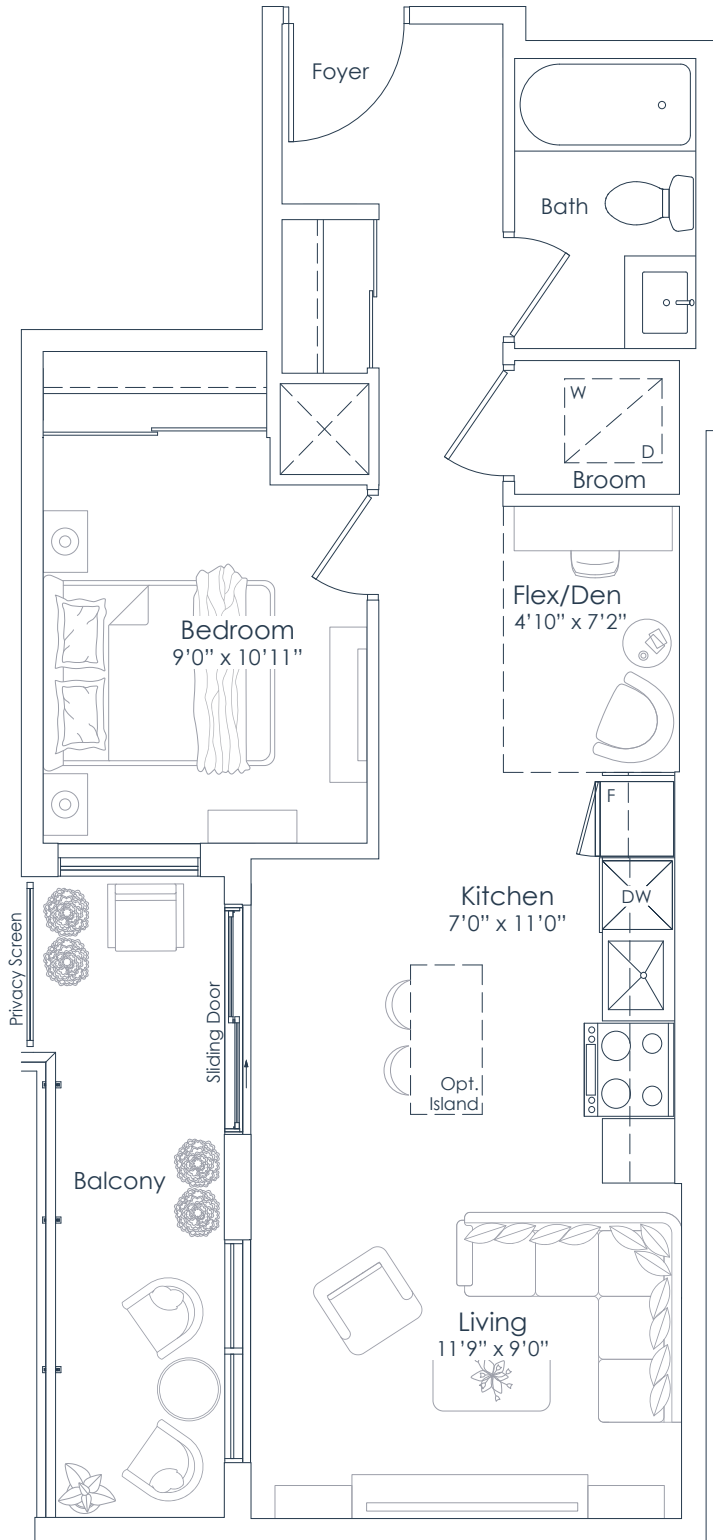


NORTHSHORE

INTERIOR: 618 SF
EXTERIOR: 84 SF
TOTAL: 702 SF
FLOORS: 3 TO 8

618

1 BEDROOM+DEN



FLOORS 7 TO 8



FLOORS 3 TO 6

This plan is not to scale and is subject to architectural review and revision. All details are approximate and subject to change without notice in order to comply with building site conditions and municipal, structural, architectural and/or Vendor requirements. Balconies and/or terraces, if any, are exclusive use common elements, shown for display purposes only and location, size and design of such are subject to change without notice. Actual unit and/or balcony and/or terrace may be a reverse mirror image of the plan presented. Units may include bulkheads, angled windows and/or angled columns. The location, size and type of windows, view treatments (including frit patterning, mullion/metal panel placement or other visual treatments) and exterior building elements may vary without notice. Suites are sold unfurnished. All illustrations are artist concept only. E.& O.E. April 2023 **1F+D-B**

NATIONAL
H O M E S

You are the blueprint™

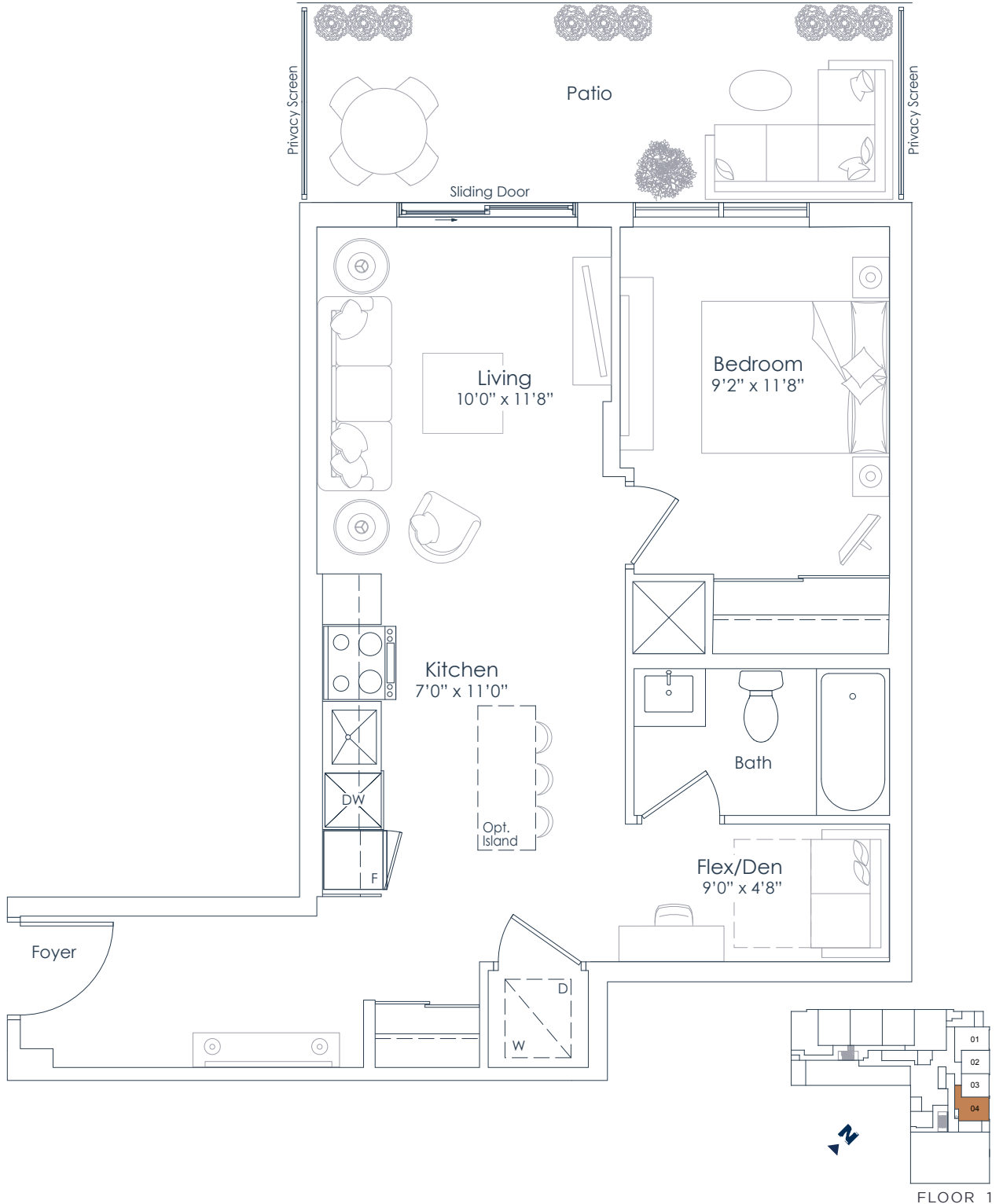


NORTHSHORE

INTERIOR: 645 SF
EXTERIOR: 140 SF
TOTAL: 785 SF
FLOOR: 1

645

1 BEDROOM+DEN



This plan is not to scale and is subject to architectural review and revision. All details are approximate and subject to change without notice in order to comply with building site conditions and municipal, structural, architectural and/or Vendor requirements. Balconies and/or terraces, if any, are exclusive use common elements, shown for display purposes only and location, size and design of such are subject to change without notice. Actual unit and/or balcony and/or terrace may be a reverse mirror image of the plan presented. Units may include bulkheads, angled windows and/or angled columns. The location, size and type of windows, view treatments (including frit patterning, mullion/metal panel placement or other visual treatments) and exterior building elements may vary without notice. Suites are sold unfurnished. All illustrations are artist concept only. E.& O.E. April 2023 **1H+D**

NATIONAL
H O M E S
You are the blueprint™

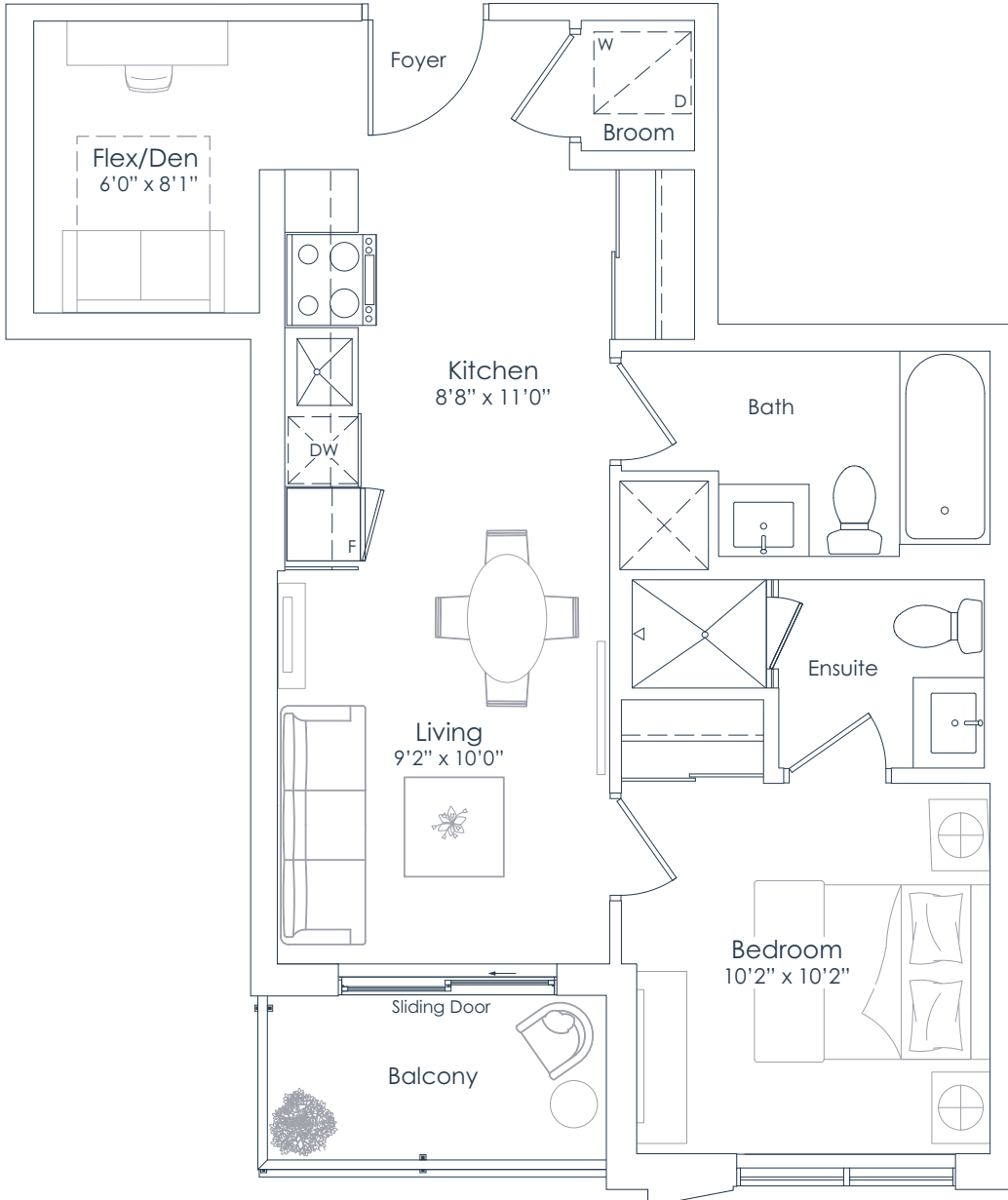


NORTHSHORE

INTERIOR: 611 SF
EXTERIOR: 41 SF
TOTAL: 652 SF
FLOORS: 3 TO 8

611

1 BEDROOM+DEN



FLOORS 7 TO 8



FLOORS 3 TO 6

This plan is not to scale and is subject to architectural review and revision. All details are approximate and subject to change without notice in order to comply with building site conditions and municipal, structural, architectural and/or Vendor requirements. Balconies and/or terraces, if any, are exclusive use common elements, shown for display purposes only and location, size and design of such are subject to change without notice. Actual unit and/or balcony and/or terrace may be a reverse mirror image of the plan presented. Units may include bulkheads, angled windows and/or angled columns. The location, size and type of windows, view treatments (including frit patterning, mullion/metal panel placement or other visual treatments) and exterior building elements may vary without notice. Suites are sold unfurnished. All illustrations are artist concept only. E.& O.E. April 2023 **1J+D**



You are the blueprint™

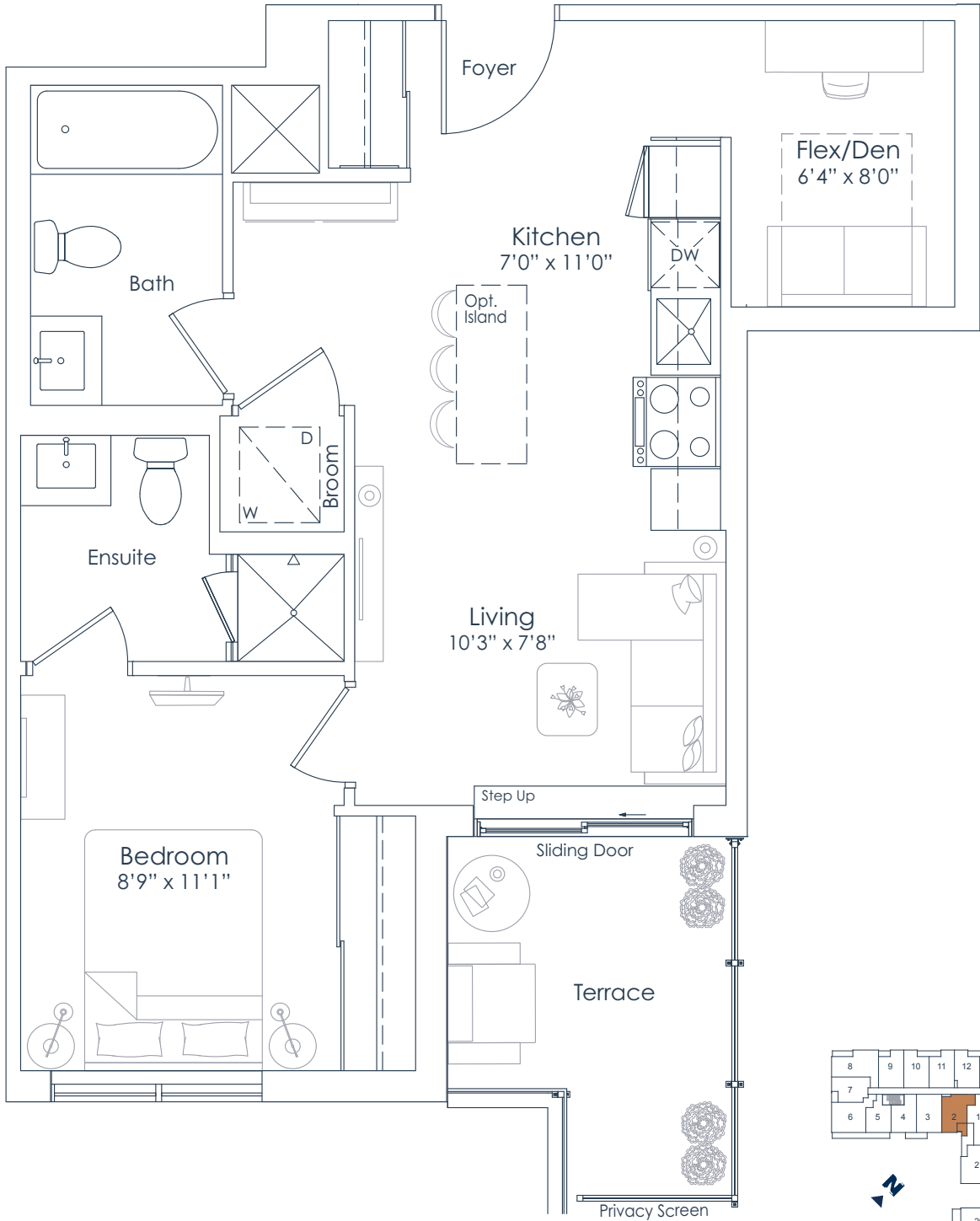


NORTHSHORE

INTERIOR: 611 SF
EXTERIOR: 69 SF
TOTAL: 680 SF
FLOOR: 2

611

1 BEDROOM+DEN



FLOOR 2

This plan is not to scale and is subject to architectural review and revision. All details are approximate and subject to change without notice in order to comply with building site conditions and municipal, structural, architectural and/or Vendor requirements. Balconies and/or terraces, if any, are exclusive use common elements, shown for display purposes only and location, size and design of such are subject to change without notice. Actual unit and/or balcony and/or terrace may be a reverse mirror image of the plan presented. Units may include bulkheads, angled windows and/or angled columns. The location, size and type of windows, view treatments (including frit patterning, mullion/metal panel placement or other visual treatments) and exterior building elements may vary without notice. Suites are sold unfurnished. All illustrations are artist concept only. E.& O.E. April 2023 **1K+D-T**

NATIONAL
H O M E S

You are the blueprint™

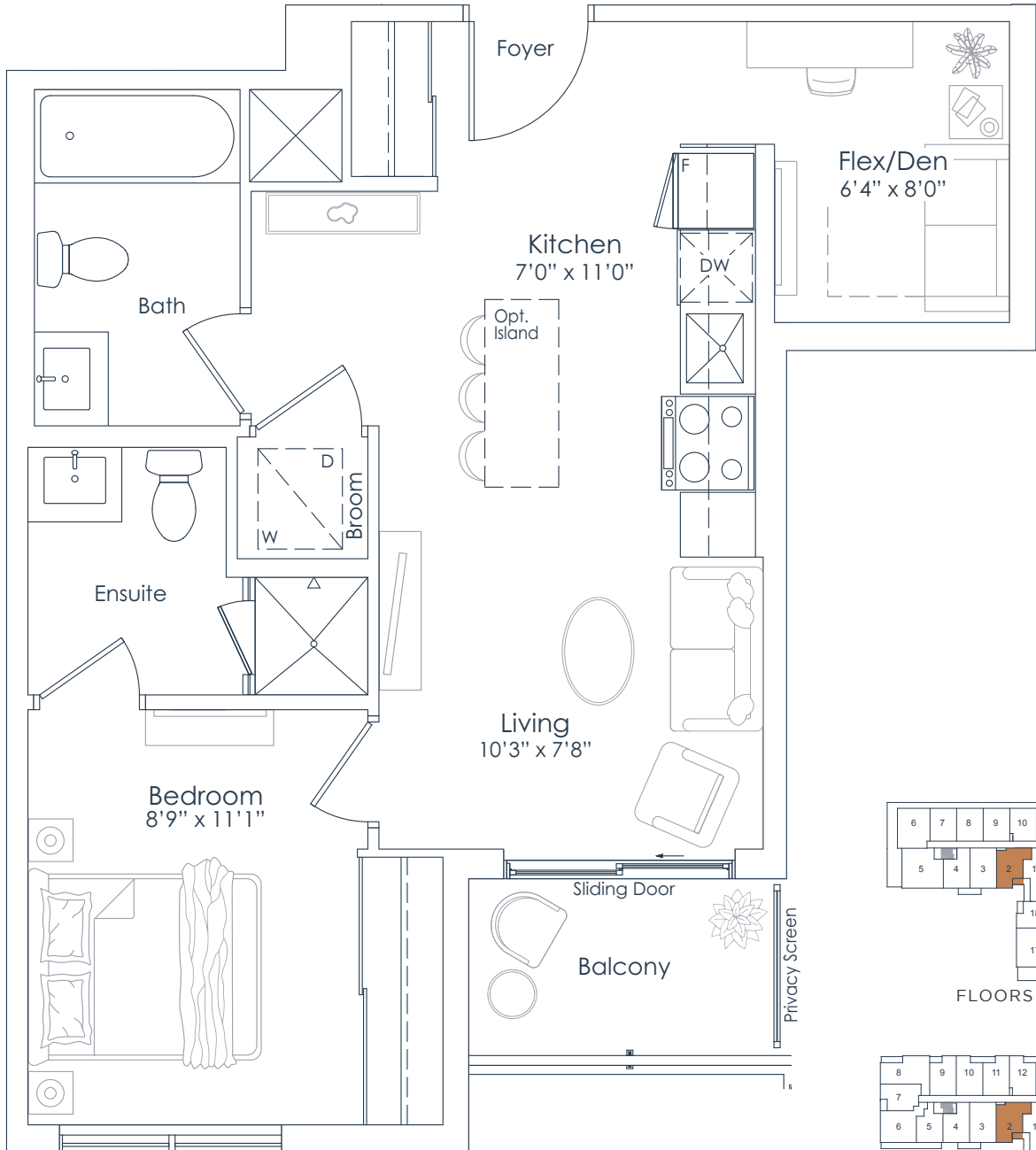


NORTHSHORE

INTERIOR: 611 SF
EXTERIOR: 38 SF
TOTAL: 649 SF
FLOORS: 3 TO 8

611

1 BEDROOM+DEN



FLOORS 7 TO 8



FLOORS 3 TO 6

This plan is not to scale and is subject to architectural review and revision. All details are approximate and subject to change without notice in order to comply with building site conditions and municipal, structural, architectural and/or Vendor requirements. Balconies and/or terraces, if any, are exclusive use common elements, shown for display purposes only and location, size and design of such are subject to change without notice. Actual unit and/or balcony and/or terrace may be a reverse mirror image of the plan presented. Units may include bulkheads, angled windows and/or angled columns. The location, size and type of windows, view treatments (including frit patterning, mullion/metal panel placement or other visual treatments) and exterior building elements may vary without notice. Suites are sold unfurnished. All illustrations are artist concept only. E.& O.E. April 2023 **1K+D-B**



You are the blueprint™

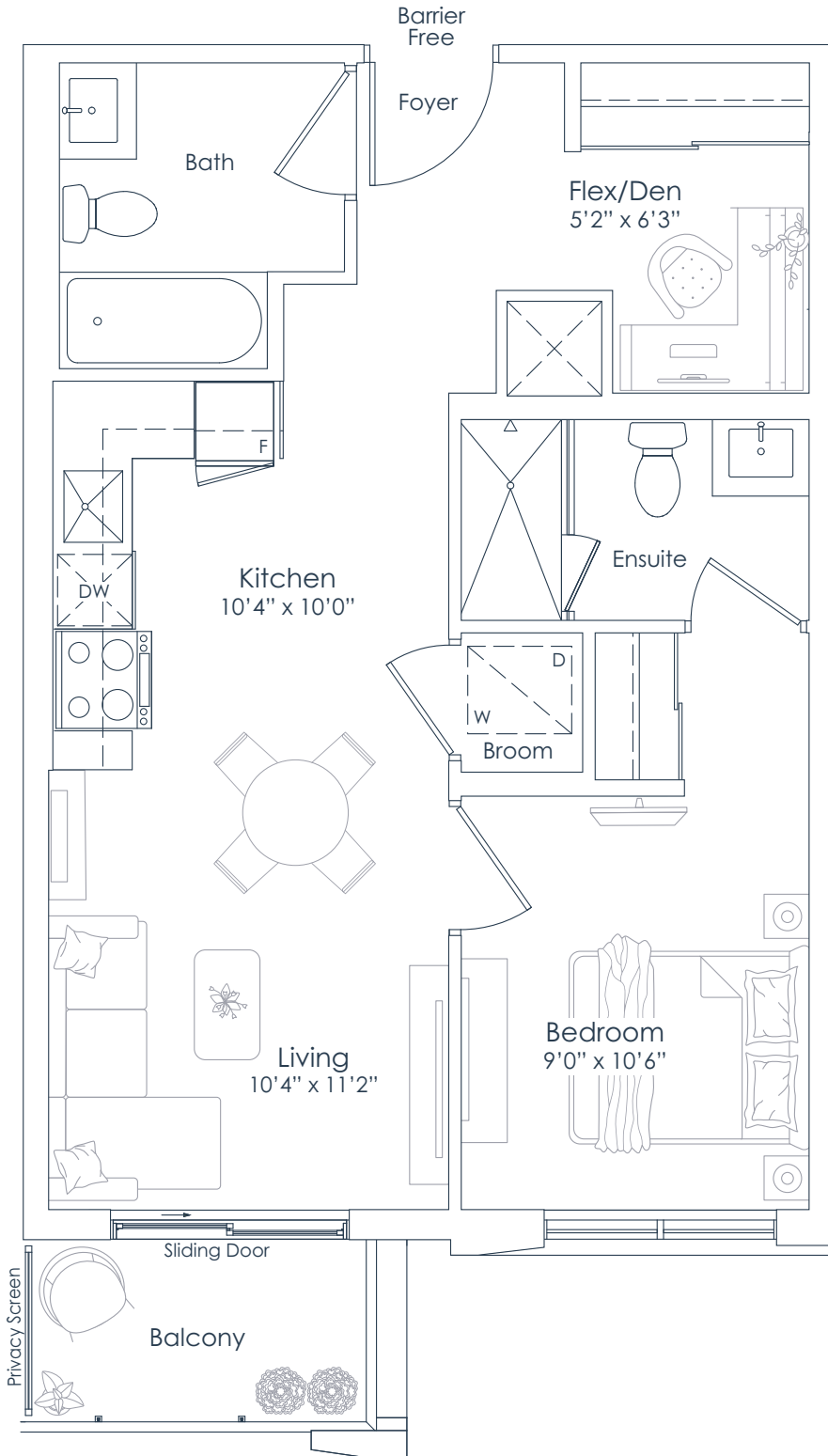


NORTHSHORE

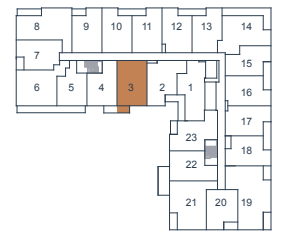
INTERIOR: 625 SF
EXTERIOR: 41 SF
TOTAL: 666 SF
FLOORS: 2 TO 8

625

1 BEDROOM+DEN



FLOORS 7 TO 8



FLOORS 3 TO 6



FLOOR 2

This plan is not to scale and is subject to architectural review and revision. All details are approximate and subject to change without notice in order to comply with building site conditions and municipal, structural, architectural and/or Vendor requirements. Balconies and/or terraces, if any, are exclusive use common elements, shown for display purposes only and location, size and design of such are subject to change without notice. Actual unit and/or balcony and/or terrace may be a reverse mirror image of the plan presented. Units may include bulkheads, angled windows and/or angled columns. The location, size and type of windows, view treatments (including frit patterning, mullion/metal panel placement or other visual treatments) and exterior building elements may vary without notice. Suites are sold unfurnished. All illustrations are artist concept only. E.& O.E. April 2023 **1L+D (BF)**

NATIONAL
H O M E S

You are the blueprint™

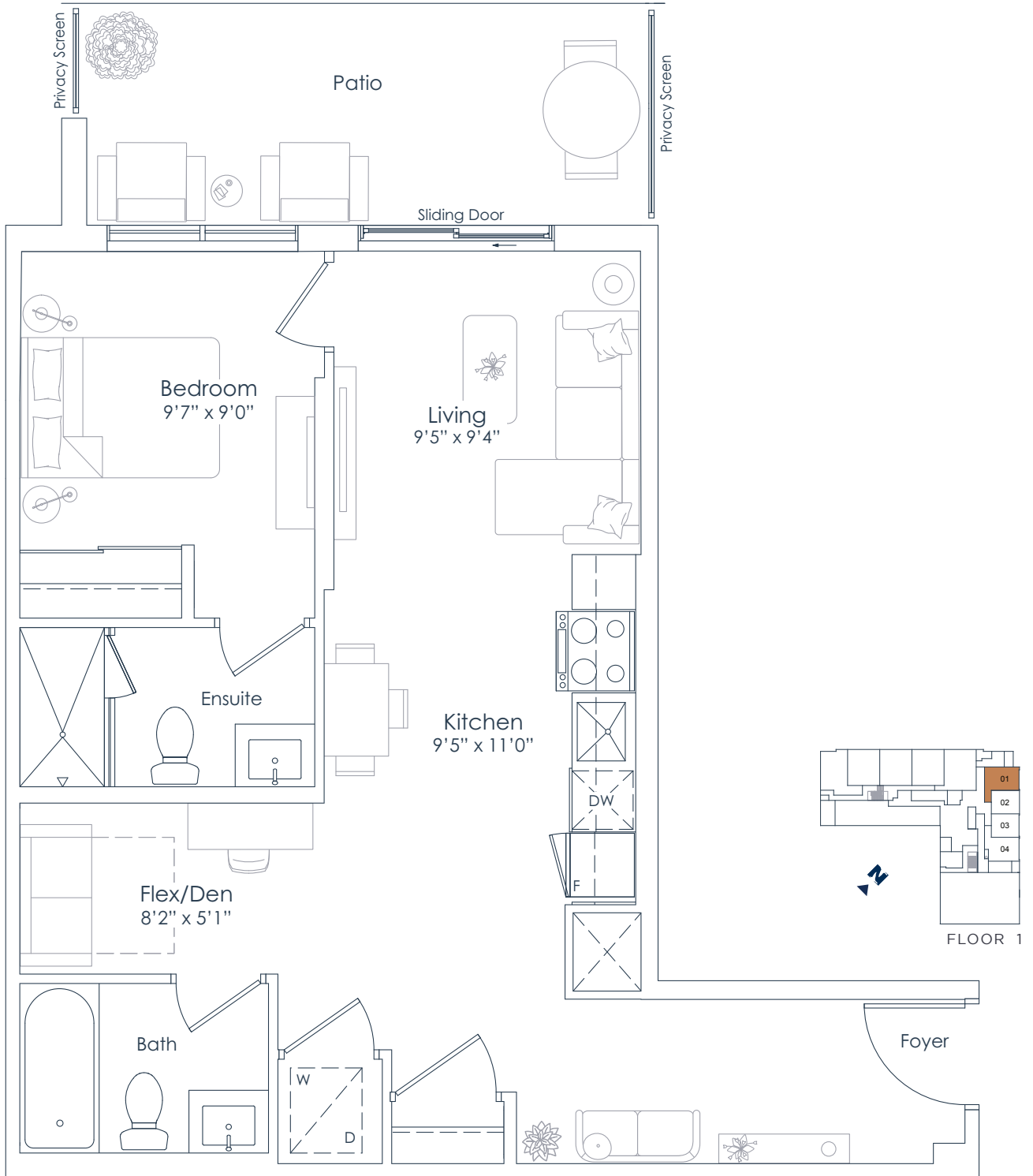


NORTHSHORE

INTERIOR: 671 SF
EXTERIOR: 124 SF
TOTAL: 795 SF
FLOOR: 1

671

1 BEDROOM+DEN



This plan is not to scale and is subject to architectural review and revision. All details are approximate and subject to change without notice in order to comply with building site conditions and municipal, structural, architectural and/or Vendor requirements. Balconies and/or terraces, if any, are exclusive use common elements, shown for display purposes only and location, size and design of such are subject to change without notice. Actual unit and/or balcony and/or terrace may be a reverse mirror image of the plan presented. Units may include bulkheads, angled windows and/or angled columns. The location, size and type of windows, view treatments (including frit patterning, mullion/metal panel placement or other visual treatments) and exterior building elements may vary without notice. Suites are sold unfurnished. All illustrations are artist concept only. E.& O.E. April 2023 **1M+D**

NATIONAL
H O M E S
You are the blueprint™