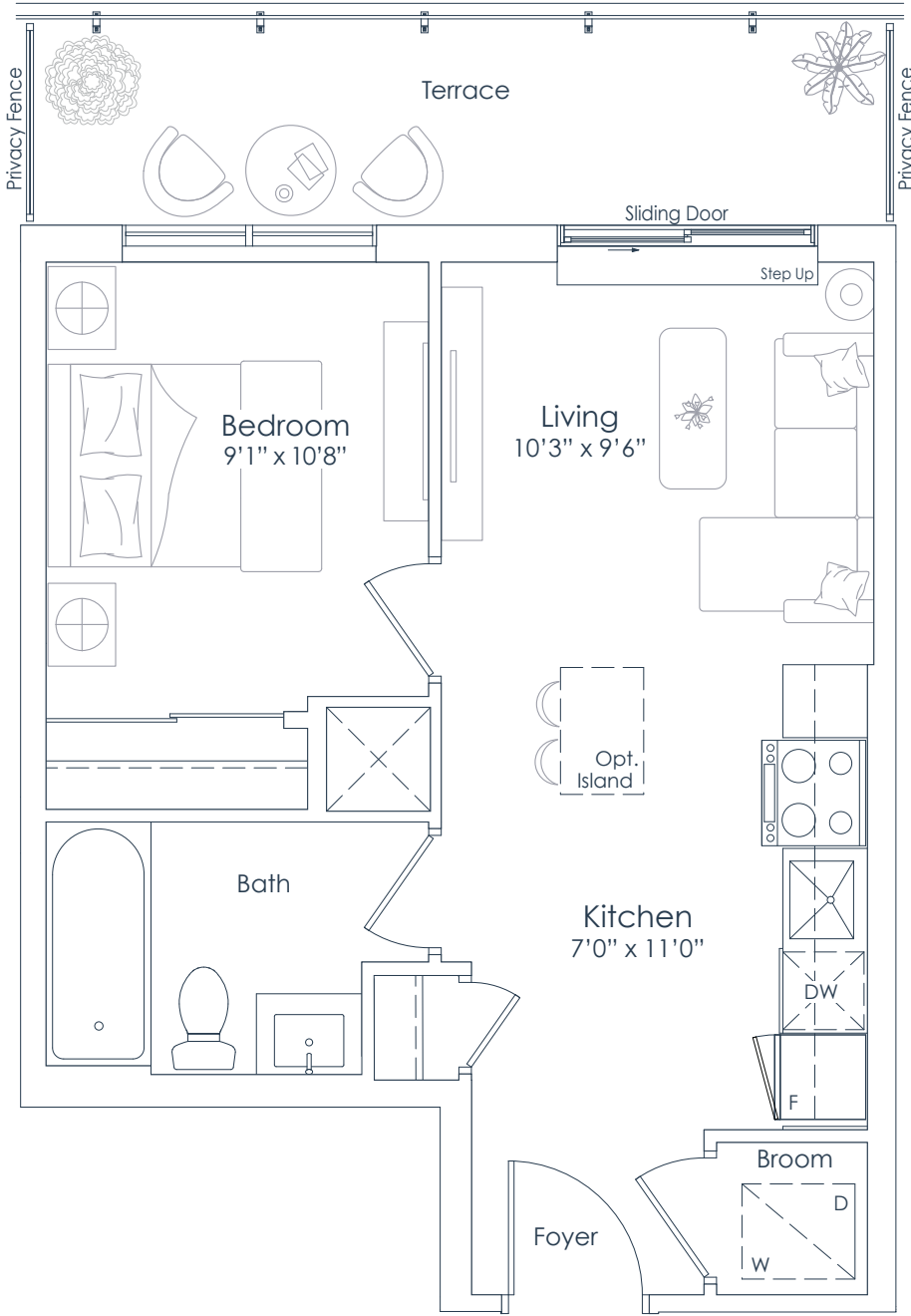




NORTHSHORE

INTERIOR: 470 SF  
EXTERIOR: 93 SF  
**TOTAL: 563 SF**  
FLOOR: 7

**470**  
1 BEDROOM



FLOOR 7

This plan is not to scale and is subject to architectural review and revision. All details are approximate and subject to change without notice in order to comply with building site conditions and municipal, structural, architectural and/or Vendor requirements. Balconies and/or terraces, if any, are exclusive use common elements, shown for display purposes only and location, size and design of such are subject to change without notice. Actual unit and/or balcony and/or terrace may be a reverse mirror image of the plan presented. Units may include bulkheads, angled windows and/or angled columns. The location, size and type of windows, view treatments (including frit patterning, mullion/metal panel placement or other visual treatments) and exterior building elements may vary without notice. Suites are sold unfurnished. All illustrations are artist concept only. E.& O.E. April 2023 **1A-T**

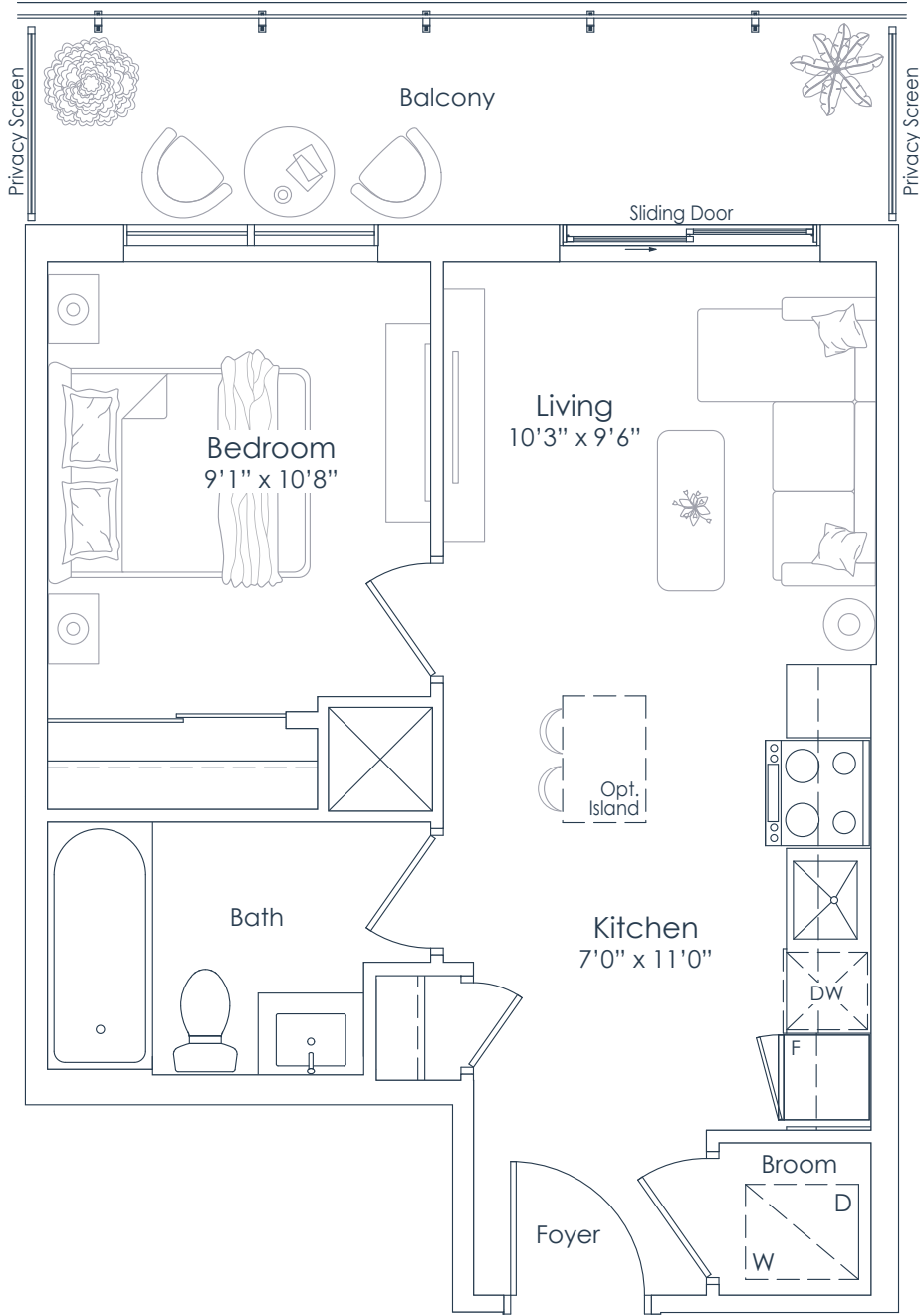
**NATIONAL**  
H O M E S  
You are the blueprint™



NORTHSHORE

INTERIOR: 470 SF  
EXTERIOR: 93 SF  
**TOTAL: 563 SF**  
FLOOR: 8

**470**  
1 BEDROOM



FLOOR 8

This plan is not to scale and is subject to architectural review and revision. All details are approximate and subject to change without notice in order to comply with building site conditions and municipal, structural, architectural and/or Vendor requirements. Balconies and/or terraces, if any, are exclusive use common elements, shown for display purposes only and location, size and design of such are subject to change without notice. Actual unit and/or balcony and/or terrace may be a reverse mirror image of the plan presented. Units may include bulkheads, angled windows and/or angled columns. The location, size and type of windows, view treatments (including frit patterning, mullion/metal panel placement or other visual treatments) and exterior building elements may vary without notice. Suites are sold unfurnished. All illustrations are artist concept only. E.& O.E. April 2023 **1A-B**

**NATIONAL**  
H O M E S  
You are the blueprint™

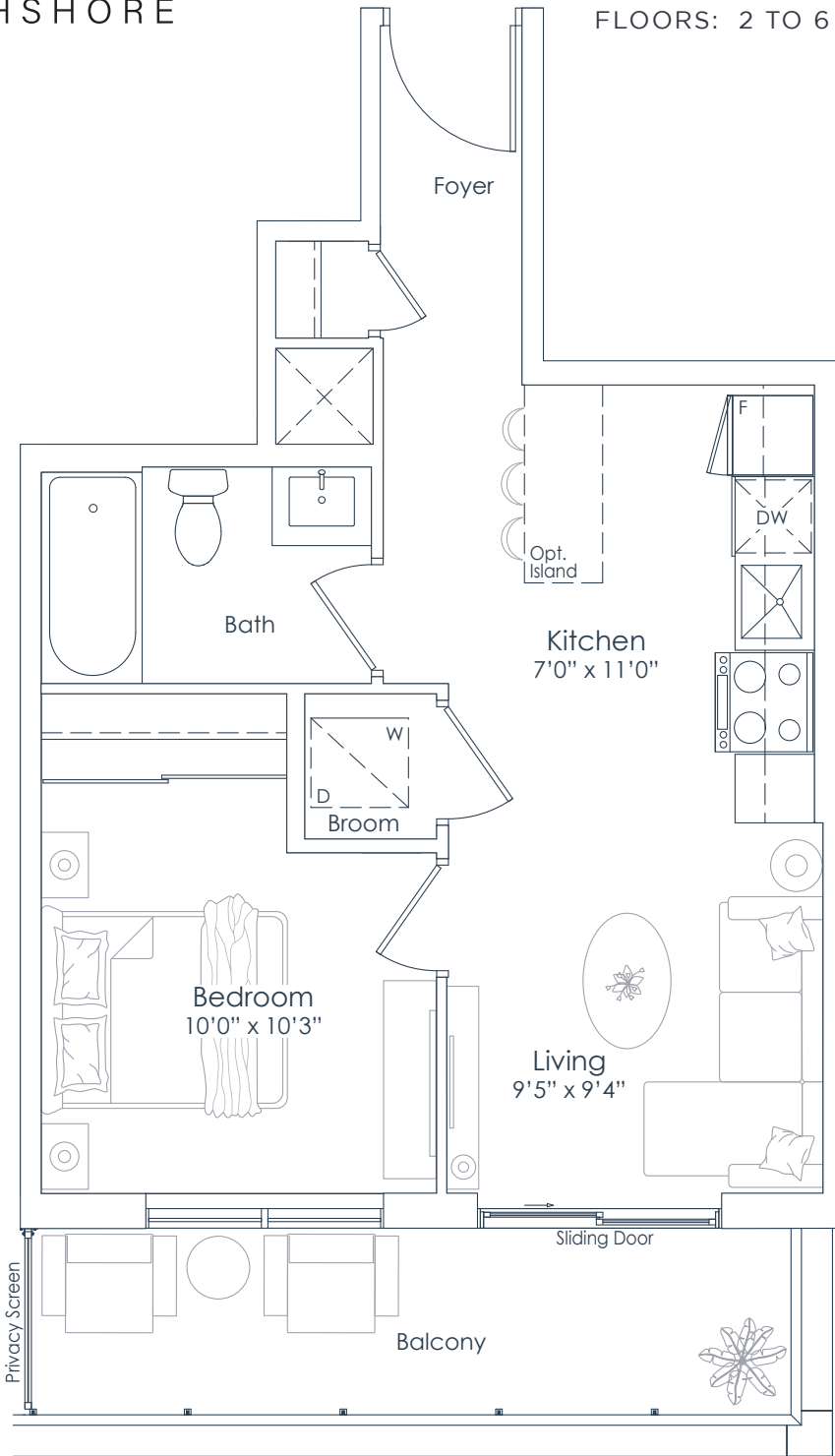


NORTHSHORE

INTERIOR: 490 SF  
EXTERIOR: 90 SF  
**TOTAL: 580 SF**  
FLOORS: 2 TO 6

# 490

1 BEDROOM



FLOORS 3 TO 6



FLOOR 2

This plan is not to scale and is subject to architectural review and revision. All details are approximate and subject to change without notice in order to comply with building site conditions and municipal, structural, architectural and/or Vendor requirements. Balconies and/or terraces, if any, are exclusive use common elements, shown for display purposes only and location, size and design of such are subject to change without notice. Actual unit and/or balcony and/or terrace may be a reverse mirror image of the plan presented. Units may include bulkheads, angled windows and/or angled columns. The location, size and type of windows, view treatments (including frit patterning, mullion/metal panel placement or other visual treatments) and exterior building elements may vary without notice. Suites are sold unfurnished. All illustrations are artist concept only. E.& O.E. April 2023 **1B**



You are the blueprint™

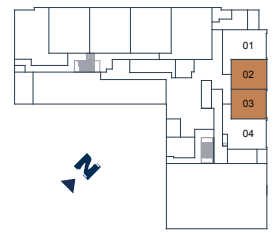
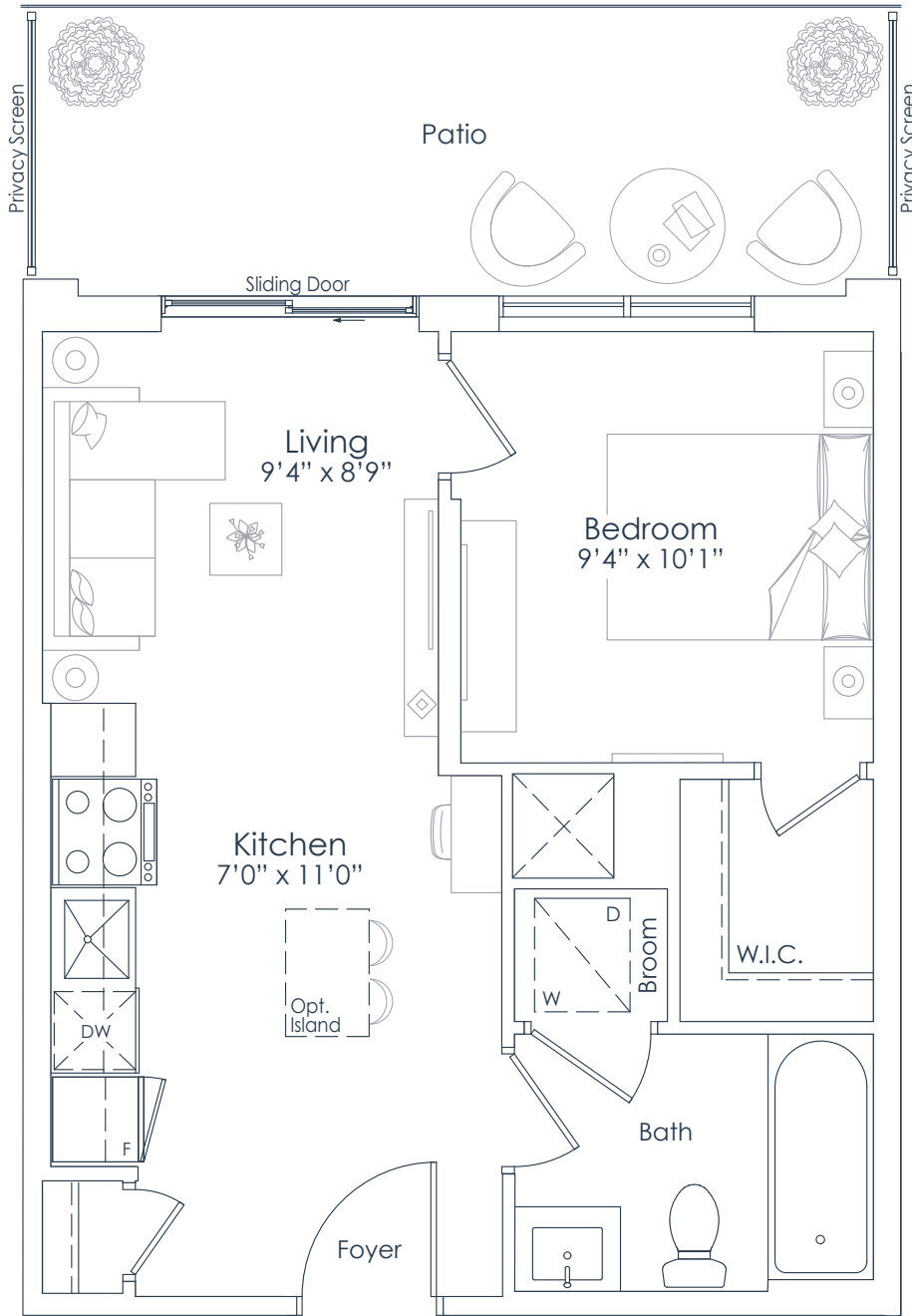


NORTHSHORE

INTERIOR: 490 SF  
EXTERIOR: 141 SF  
**TOTAL: 631 SF**  
FLOOR: 1

# 490

1 BEDROOM



FLOOR 1

This plan is not to scale and is subject to architectural review and revision. All details are approximate and subject to change without notice in order to comply with building site conditions and municipal, structural, architectural and/or Vendor requirements. Balconies and/or terraces, if any, are exclusive use common elements, shown for display purposes only and location, size and design of such are subject to change without notice. Actual unit and/or balcony and/or terrace may be a reverse mirror image of the plan presented. Units may include bulkheads, angled windows and/or angled columns. The location, size and type of windows, view treatments (including frit patterning, mullion/metal panel placement or other visual treatments) and exterior building elements may vary without notice. Suites are sold unfurnished. All illustrations are artist concept only. E.& O.E. April 2023 **1C**

**NATIONAL**  
H O M E S

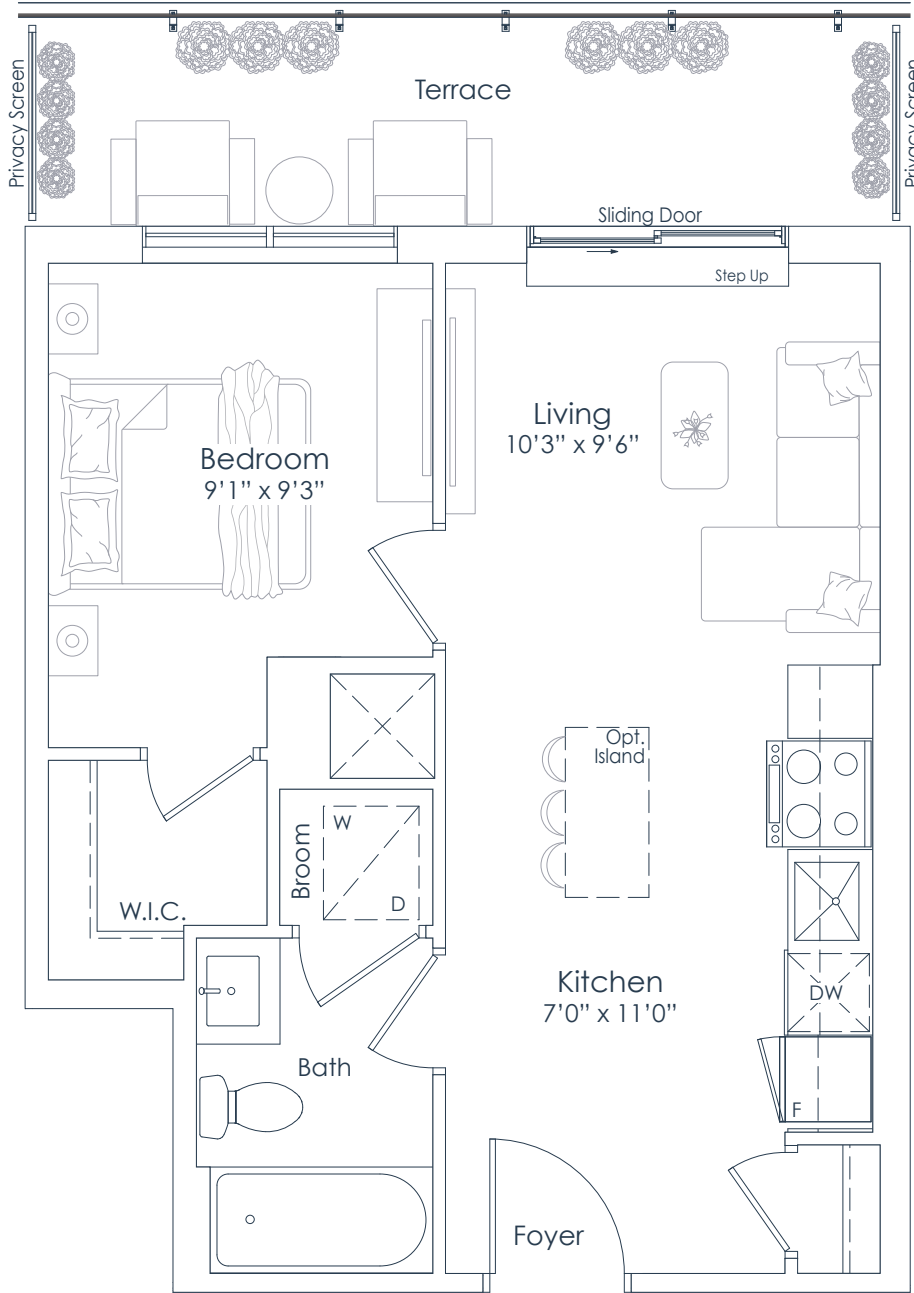
You are the blueprint™



NORTHSHORE

INTERIOR: 497 SF  
EXTERIOR: 91 SF  
**TOTAL: 588 SF**  
FLOOR: 7

**497**  
1 BEDROOM



FLOOR 7

This plan is not to scale and is subject to architectural review and revision. All details are approximate and subject to change without notice in order to comply with building site conditions and municipal, structural, architectural and/or Vendor requirements. Balconies and/or terraces, if any, are exclusive use common elements, shown for display purposes only and location, size and design of such are subject to change without notice. Actual unit and/or balcony and/or terrace may be a reverse mirror image of the plan presented. Units may include bulkheads, angled windows and/or angled columns. The location, size and type of windows, view treatments (including frit patterning, mullion/metal panel placement or other visual treatments) and exterior building elements may vary without notice. Suites are sold unfurnished. All illustrations are artist concept only. E.& O.E. April 2023 **1D-T**

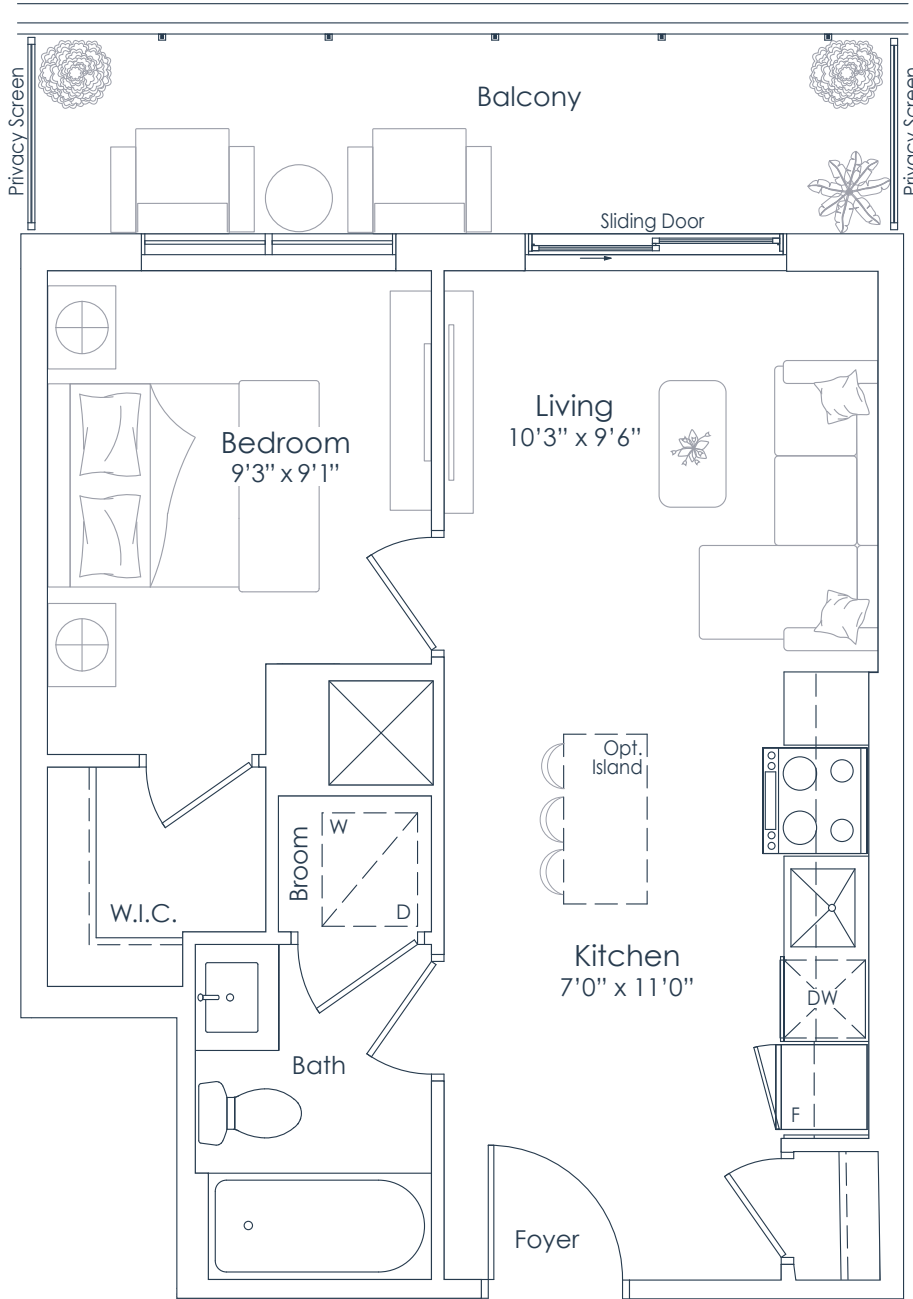
**NATIONAL**  
H O M E S  
You are the blueprint™



NORTHSHORE

INTERIOR: 497 SF  
EXTERIOR: 91 SF  
**TOTAL: 588 SF**  
FLOOR: 8

**497**  
1 BEDROOM



FLOOR 8

This plan is not to scale and is subject to architectural review and revision. All details are approximate and subject to change without notice in order to comply with building site conditions and municipal, structural, architectural and/or Vendor requirements. Balconies and/or terraces, if any, are exclusive use common elements, shown for display purposes only and location, size and design of such are subject to change without notice. Actual unit and/or balcony and/or terrace may be a reverse mirror image of the plan presented. Units may include bulkheads, angled windows and/or angled columns. The location, size and type of windows, view treatments (including frit patterning, mullion/metal panel placement or other visual treatments) and exterior building elements may vary without notice. Suites are sold unfurnished. All illustrations are artist concept only. E.& O.E. April 2023 **1D-B**

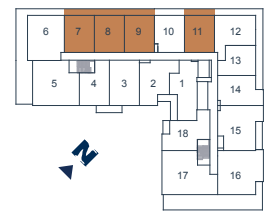
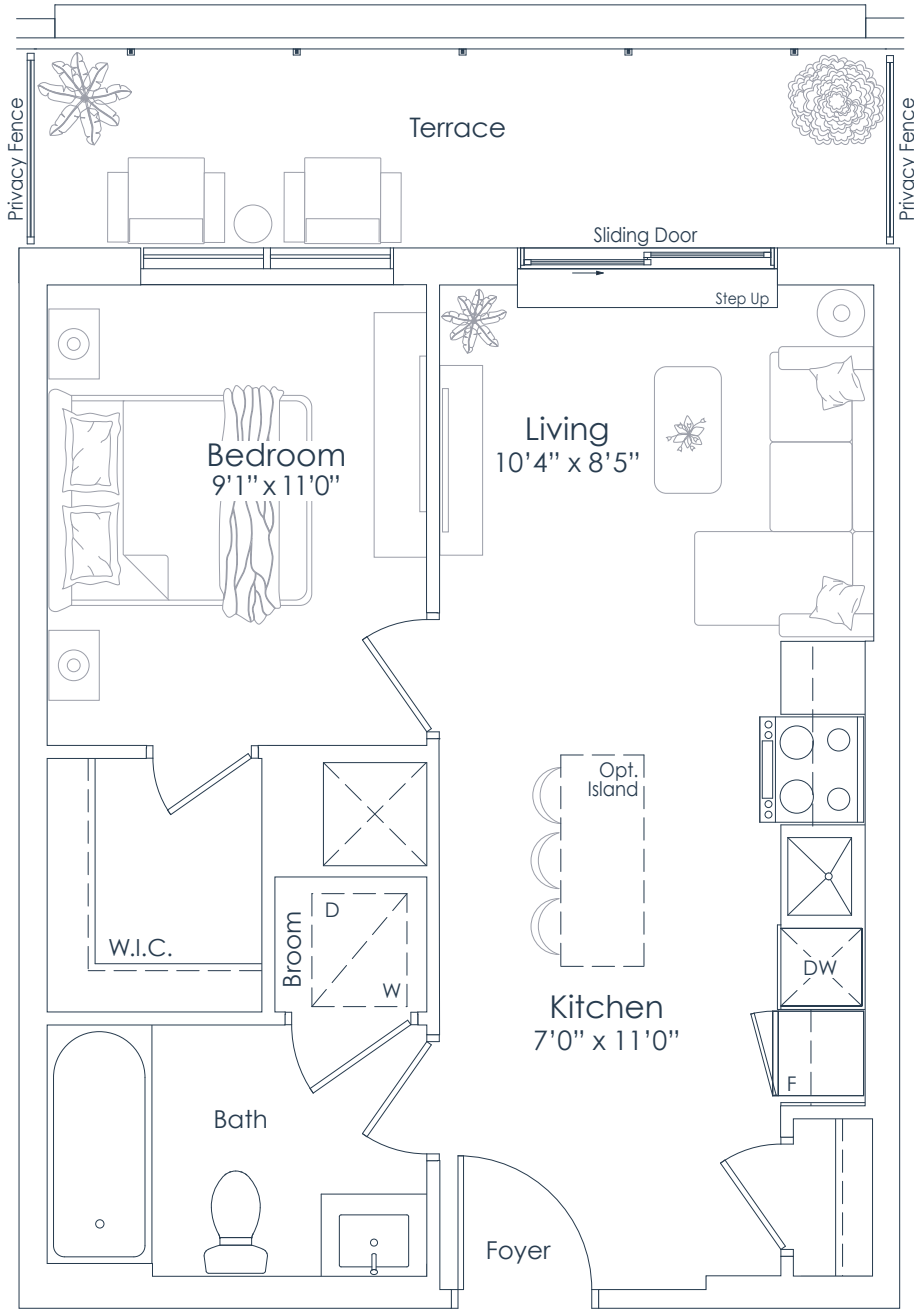
**NATIONAL**  
H O M E S  
You are the blueprint™



NORTHSHORE

INTERIOR: 511 SF  
EXTERIOR: 91 SF  
TOTAL: 602 SF  
FLOOR: 7

511  
1 BEDROOM



FLOOR 7

This plan is not to scale and is subject to architectural review and revision. All details are approximate and subject to change without notice in order to comply with building site conditions and municipal, structural, architectural and/or Vendor requirements. Balconies and/or terraces, if any, are exclusive use common elements, shown for display purposes only and location, size and design of such are subject to change without notice. Actual unit and/or balcony and/or terrace may be a reverse mirror image of the plan presented. Units may include bulkheads, angled windows and/or angled columns. The location, size and type of windows, view treatments (including frit patterning, mullion/metal panel placement or other visual treatments) and exterior building elements may vary without notice. Suites are sold unfurnished. All illustrations are artist concept only. E.& O.E. April 2023 1E-T

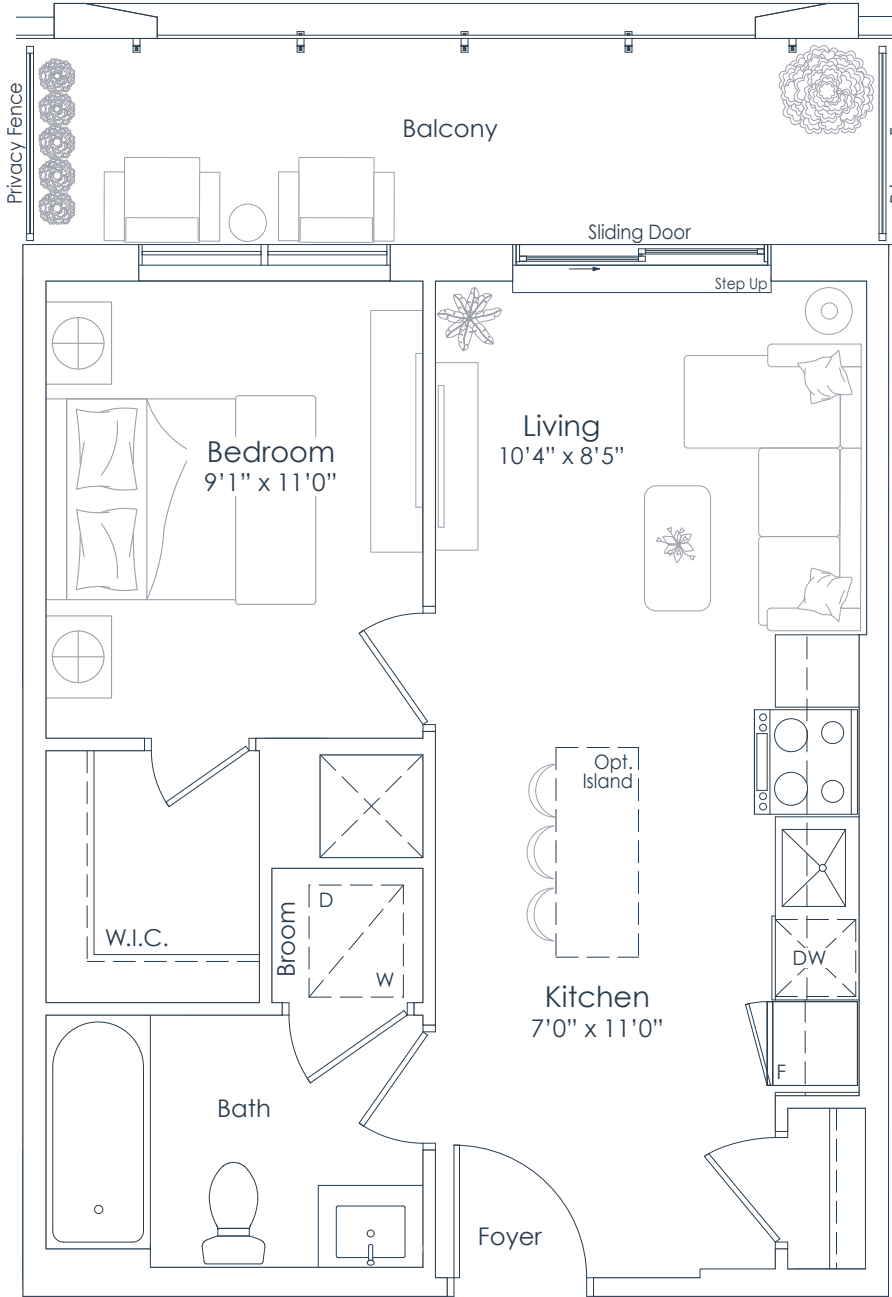
**NATIONAL**  
H O M E S  
You are the blueprint™



NORTHSHORE

INTERIOR: 511 SF  
EXTERIOR: 91 SF  
TOTAL: 602 SF  
FLOOR: 8

511  
1 BEDROOM



FLOOR 8

This plan is not to scale and is subject to architectural review and revision. All details are approximate and subject to change without notice in order to comply with building site conditions and municipal, structural, architectural and/or Vendor requirements. Balconies and/or terraces, if any, are exclusive use common elements, shown for display purposes only and location, size and design of such are subject to change without notice. Actual unit and/or balcony and/or terrace may be a reverse mirror image of the plan presented. Units may include bulkheads, angled windows and/or angled columns. The location, size and type of windows, view treatments (including frit patterning, mullion/metal panel placement or other visual treatments) and exterior building elements may vary without notice. Suites are sold unfurnished. All illustrations are artist concept only. E.& O.E. April 2023 **1E-B**

**NATIONAL**  
H O M E S  
You are the blueprint™



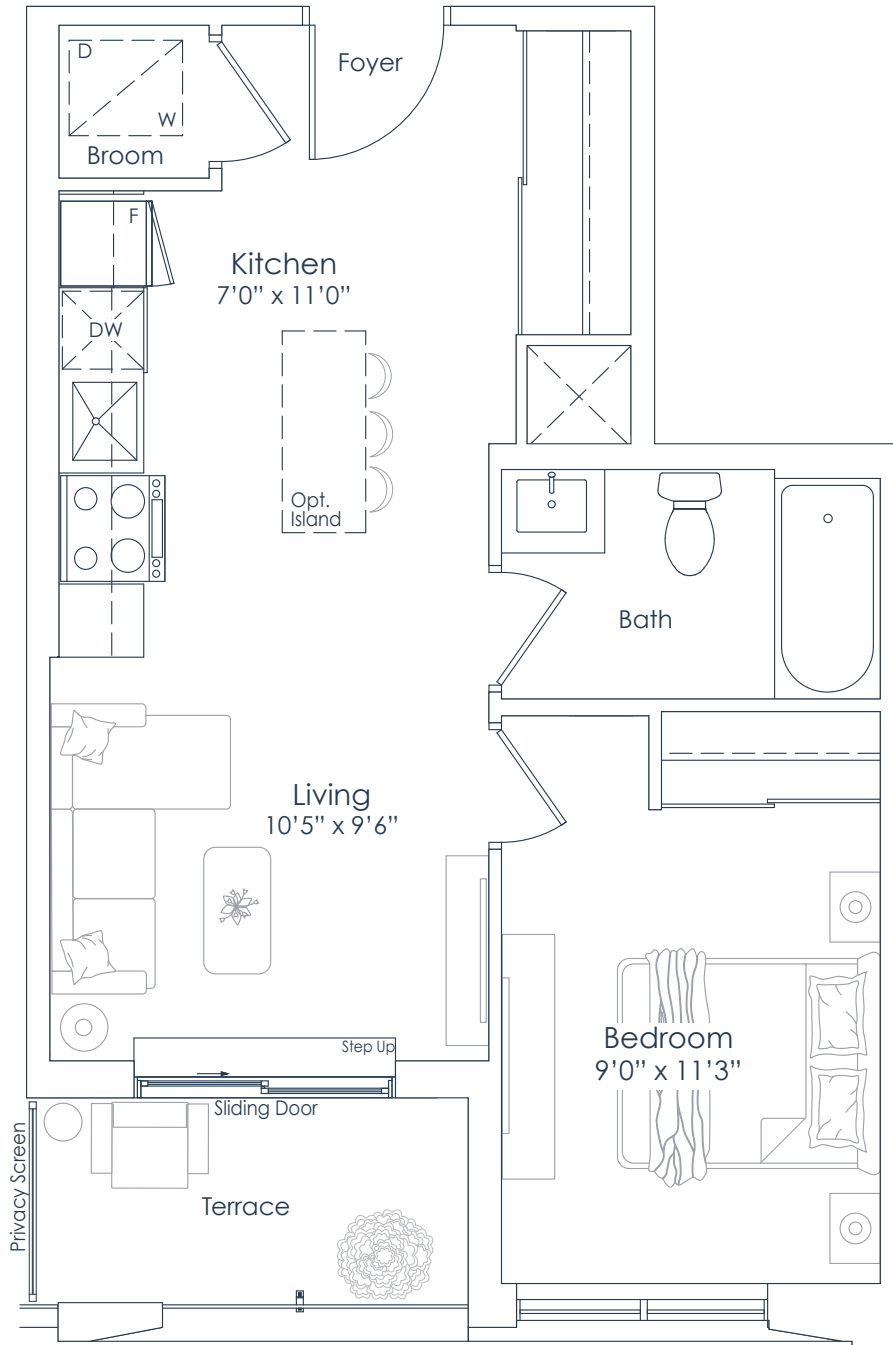


NORTHSHORE

INTERIOR: 523 SF  
EXTERIOR: 43 SF  
**TOTAL: 566 SF**  
FLOOR: 2

# 523

1 BEDROOM



FLOOR 2

This plan is not to scale and is subject to architectural review and revision. All details are approximate and subject to change without notice in order to comply with building site conditions and municipal, structural, architectural and/or Vendor requirements. Balconies and/or terraces, if any, are exclusive use common elements, shown for display purposes only and location, size and design of such are subject to change without notice. Actual unit and/or balcony and/or terrace may be a reverse mirror image of the plan presented. Units may include bulkheads, angled windows and/or angled columns. The location, size and type of windows, view treatments (including frit patterning, mullion/metal panel placement or other visual treatments) and exterior building elements may vary without notice. Suites are sold unfurnished. All illustrations are artist concept only. E.& O.E. April 2023 **1F-T**



You are the blueprint™

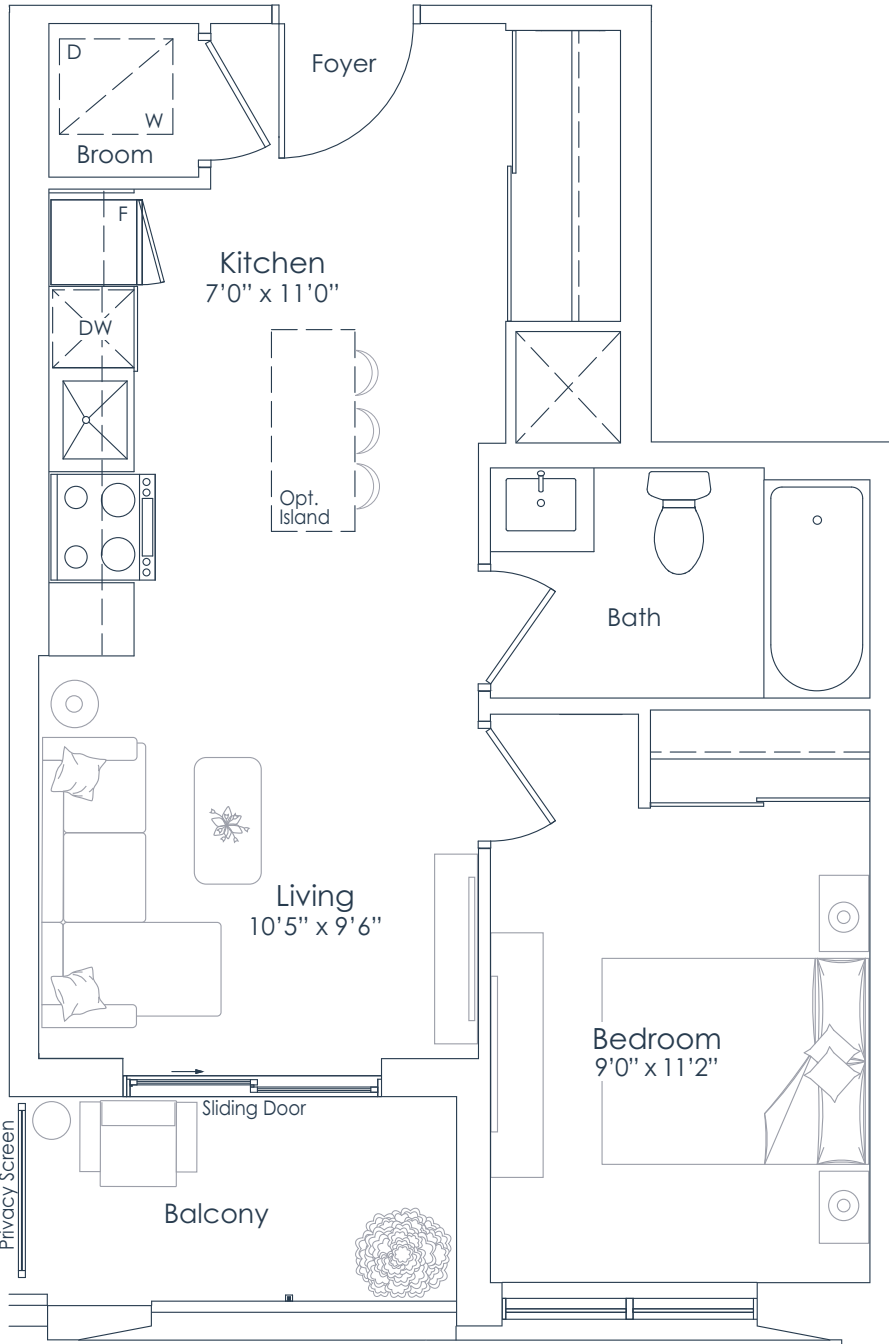


NORTHSHORE

INTERIOR: 523 SF  
EXTERIOR: 43 SF  
**TOTAL: 566 SF**  
FLOORS: 3 TO 6

# 523

1 BEDROOM



FLOORS 3 TO 6

This plan is not to scale and is subject to architectural review and revision. All details are approximate and subject to change without notice in order to comply with building site conditions and municipal, structural, architectural and/or Vendor requirements. Balconies and/or terraces, if any, are exclusive use common elements, shown for display purposes only and location, size and design of such are subject to change without notice. Actual unit and/or balcony and/or terrace may be a reverse mirror image of the plan presented. Units may include bulkheads, angled windows and/or angled columns. The location, size and type of windows, view treatments (including frit patterning, mullion/metal panel placement or other visual treatments) and exterior building elements may vary without notice. Suites are sold unfurnished. All illustrations are artist concept only. E.& O.E. April 2023 **1F-B**

**NATIONAL**  
H O M E S

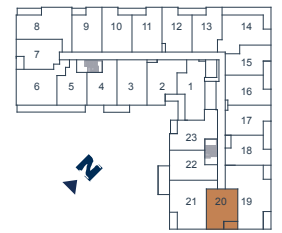
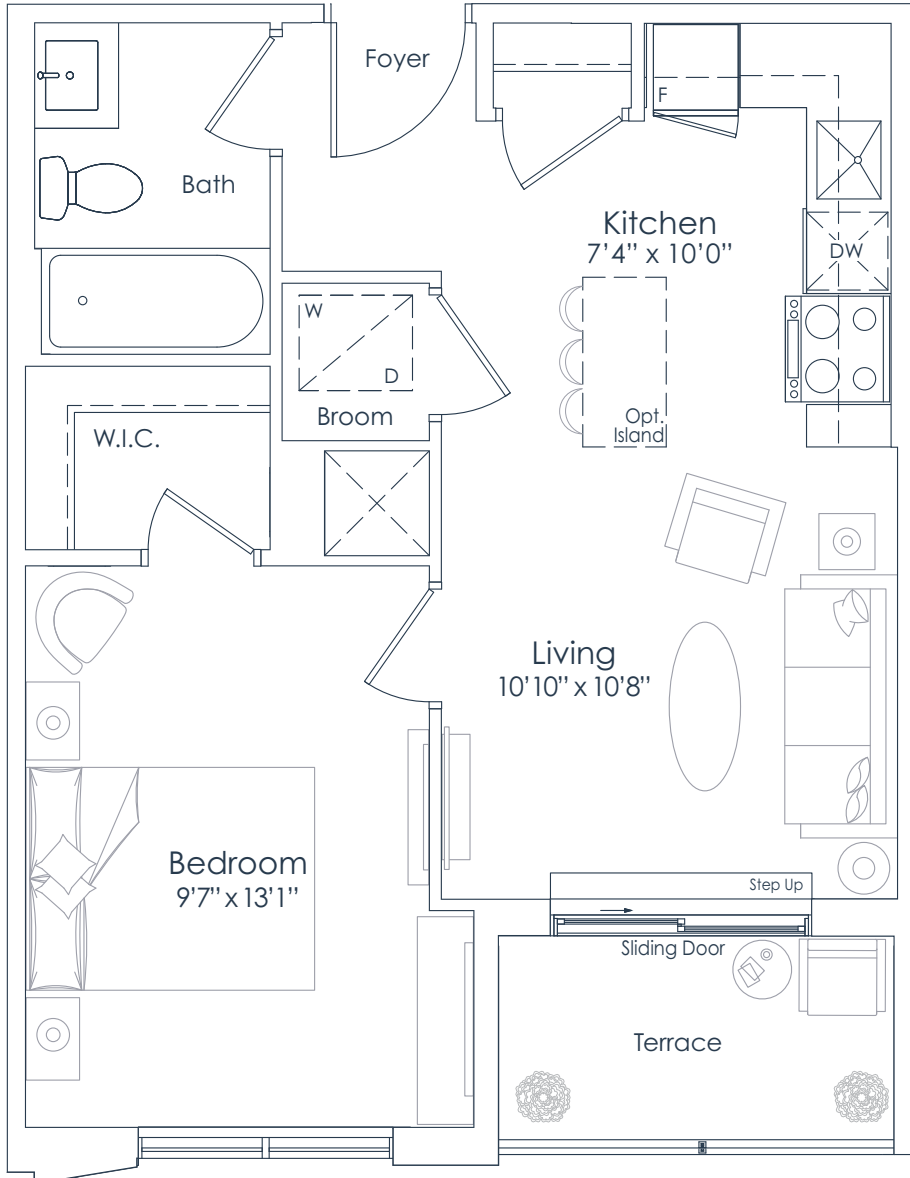
You are the blueprint™



NORTHSHORE

INTERIOR: 531 SF  
EXTERIOR: 44 SF  
**TOTAL: 575 SF**  
FLOOR: 3

**531**  
1 BEDROOM



FLOOR 3

This plan is not to scale and is subject to architectural review and revision. All details are approximate and subject to change without notice in order to comply with building site conditions and municipal, structural, architectural and/or Vendor requirements. Balconies and/or terraces, if any, are exclusive use common elements, shown for display purposes only and location, size and design of such are subject to change without notice. Actual unit and/or balcony and/or terrace may be a reverse mirror image of the plan presented. Units may include bulkheads, angled windows and/or angled columns. The location, size and type of windows, view treatments (including frit patterning, mullion/metal panel placement or other visual treatments) and exterior building elements may vary without notice. Suites are sold unfurnished. All illustrations are artist concept only. E.& O.E. April 2023 1H-T

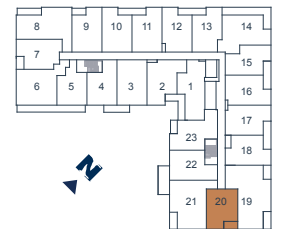
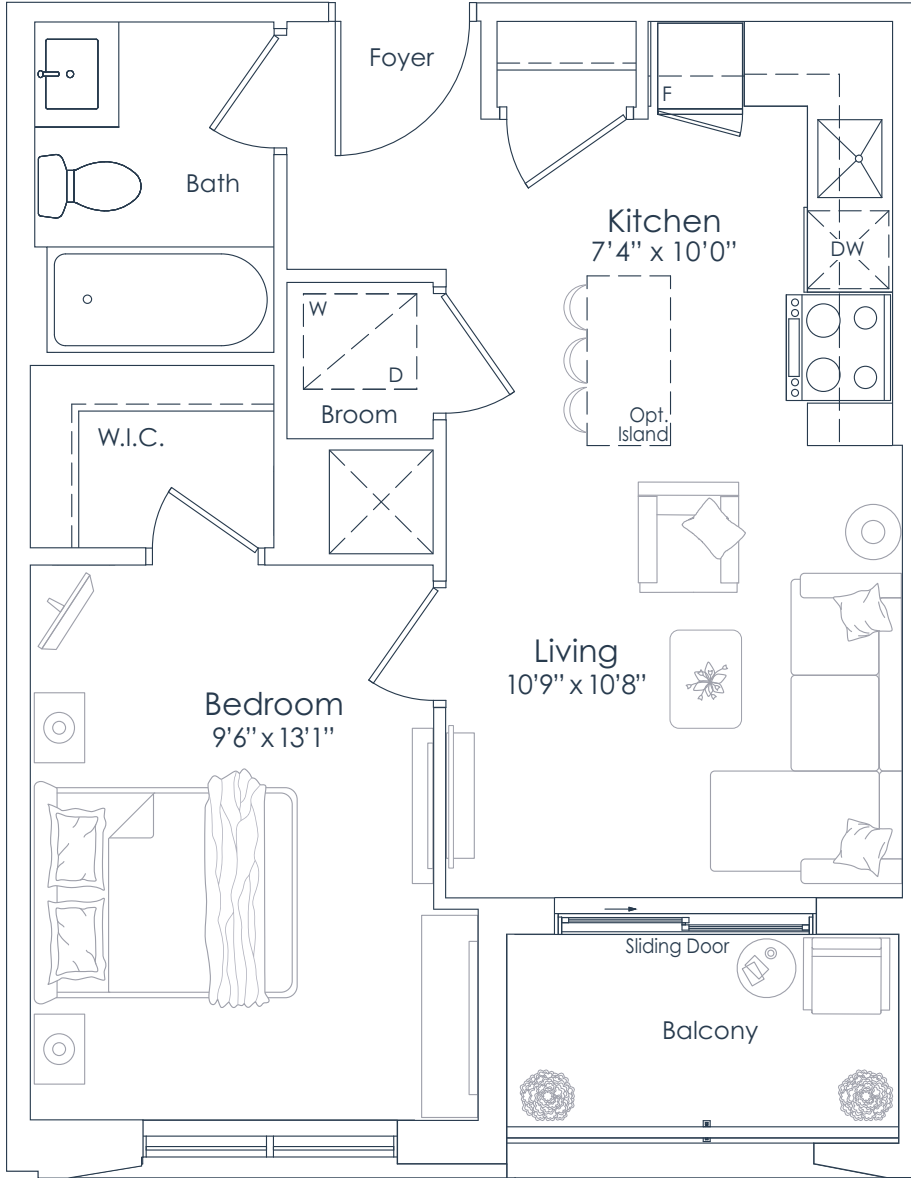
**NATIONAL**  
H O M E S  
You are the blueprint™



NORTHSHORE

INTERIOR: 531 SF  
EXTERIOR: 41 SF  
**TOTAL: 572 SF**  
FLOORS: 4 TO 6

**531**  
1 BEDROOM



FLOORS 4 TO 6

This plan is not to scale and is subject to architectural review and revision. All details are approximate and subject to change without notice in order to comply with building site conditions and municipal, structural, architectural and/or Vendor requirements. Balconies and/or terraces, if any, are exclusive use common elements, shown for display purposes only and location, size and design of such are subject to change without notice. Actual unit and/or balcony and/or terrace may be a reverse mirror image of the plan presented. Units may include bulkheads, angled windows and/or angled columns. The location, size and type of windows, view treatments (including frit patterning, mullion/metal panel placement or other visual treatments) and exterior building elements may vary without notice. Suites are sold unfurnished. All illustrations are artist concept only. E.& O.E. April 2023 **1H-B**

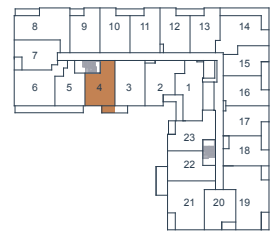
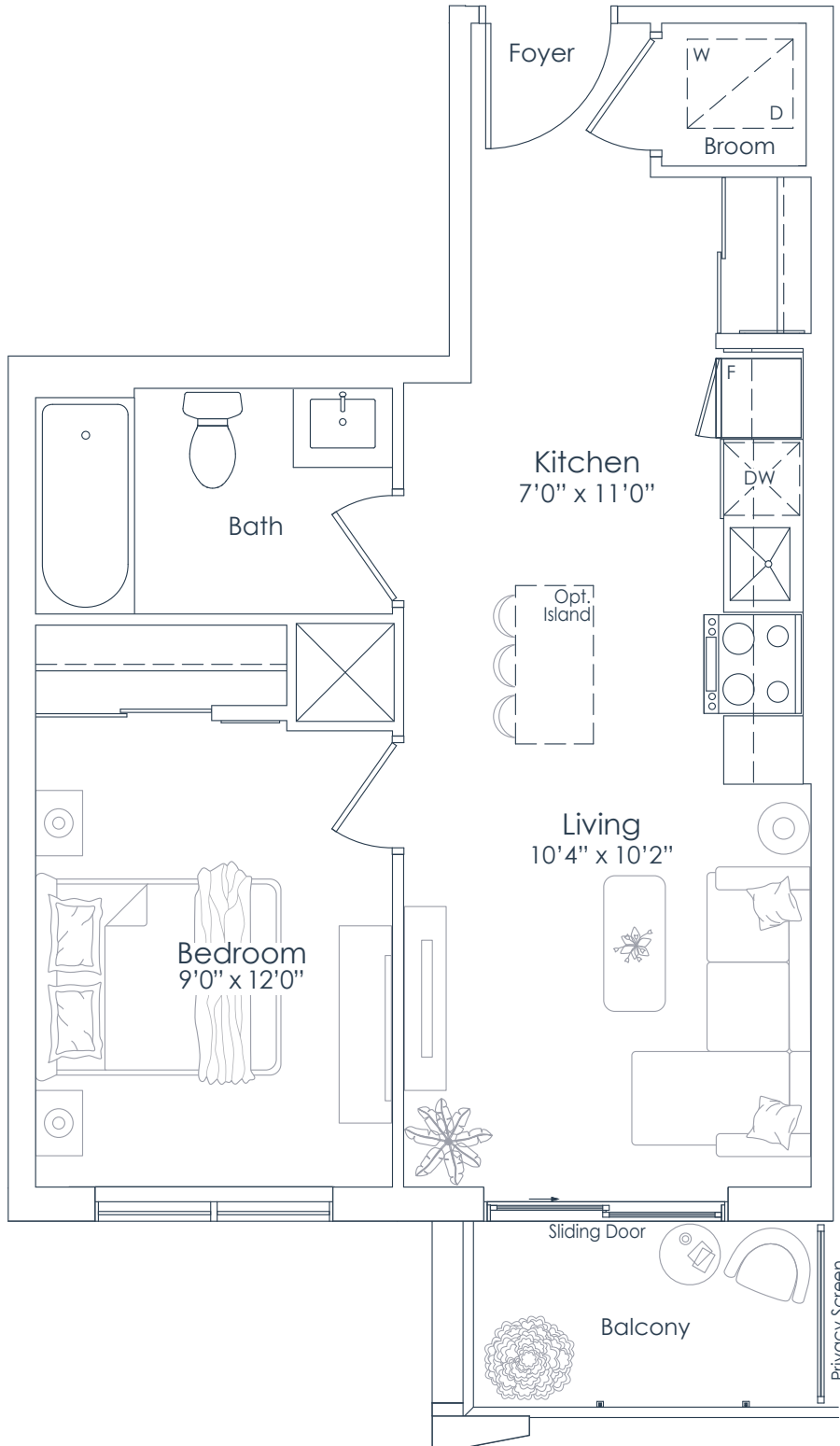
**NATIONAL**  
**H O M E S**  
You are the blueprint™



NORTHSHORE

INTERIOR: 537 SF  
EXTERIOR: 41 SF  
**TOTAL: 578 SF**  
FLOORS: 2 TO 8

**537**  
1 BEDROOM



This plan is not to scale and is subject to architectural review and revision. All details are approximate and subject to change without notice in order to comply with building site conditions and municipal, structural, architectural and/or Vendor requirements. Balconies and/or terraces, if any, are exclusive use common elements, shown for display purposes only and location, size and design of such are subject to change without notice. Actual unit and/or balcony and/or terrace may be a reverse mirror image of the plan presented. Units may include bulkheads, angled windows and/or angled columns. The location, size and type of windows, view treatments (including frit patterning, mullion/metal panel placement or other visual treatments) and exterior building elements may vary without notice. Suites are sold unfurnished. All illustrations are artist concept only. E.& O.E. April 2023 1J

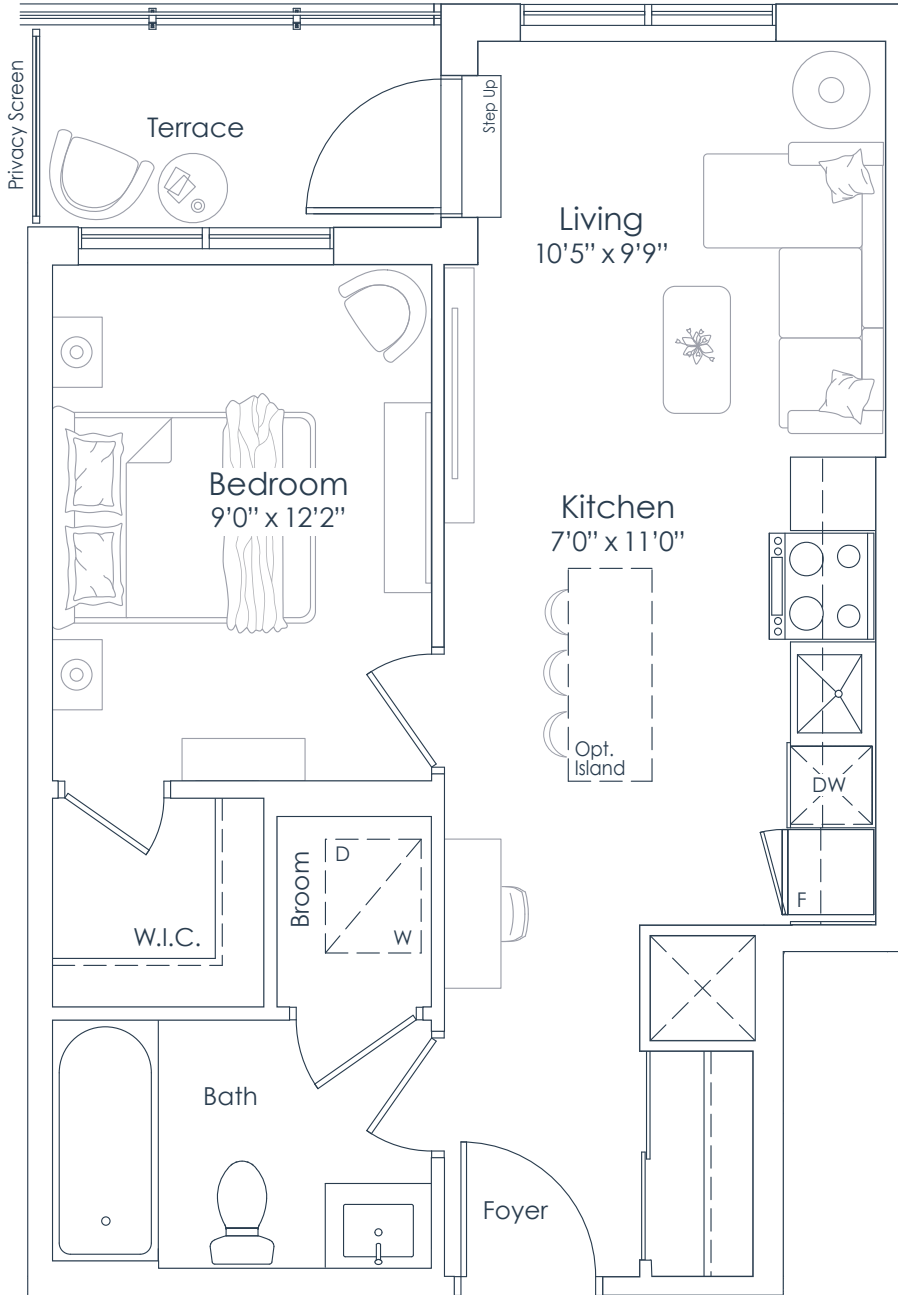
**NATIONAL**  
H O M E S  
You are the blueprint™



NORTHSHORE

INTERIOR: 541 SF  
EXTERIOR: 43 SF  
**TOTAL: 584 SF**  
FLOOR: 2

**541**  
1 BEDROOM



FLOOR 2

This plan is not to scale and is subject to architectural review and revision. All details are approximate and subject to change without notice in order to comply with building site conditions and municipal, structural, architectural and/or Vendor requirements. Balconies and/or terraces, if any, are exclusive use common elements, shown for display purposes only and location, size and design of such are subject to change without notice. Actual unit and/or balcony and/or terrace may be a reverse mirror image of the plan presented. Units may include bulkheads, angled windows and/or angled columns. The location, size and type of windows, view treatments (including frit patterning, mullion/metal panel placement or other visual treatments) and exterior building elements may vary without notice. Suites are sold unfurnished. All illustrations are artist concept only. E.& O.E. April 2023 **1K-T**

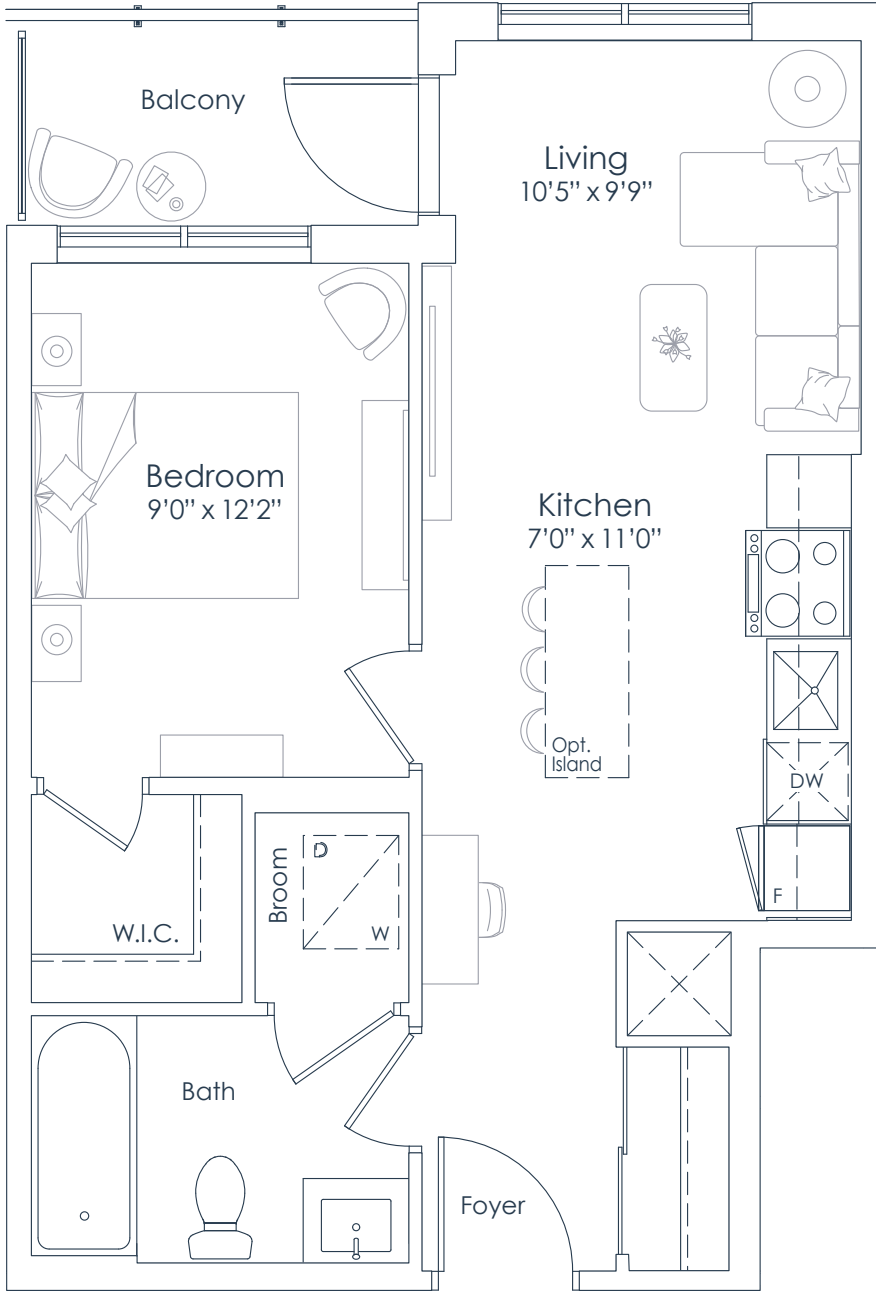
**NATIONAL**  
H O M E S  
You are the blueprint™



NORTHSHORE

INTERIOR: 541 SF  
EXTERIOR: 43 SF  
**TOTAL: 584 SF**  
FLOORS: 3 TO 6

**541**  
1 BEDROOM



FLOORS 3 TO 6

This plan is not to scale and is subject to architectural review and revision. All details are approximate and subject to change without notice in order to comply with building site conditions and municipal, structural, architectural and/or Vendor requirements. Balconies and/or terraces, if any, are exclusive use common elements, shown for display purposes only and location, size and design of such are subject to change without notice. Actual unit and/or balcony and/or terrace may be a reverse mirror image of the plan presented. Units may include bulkheads, angled windows and/or angled columns. The location, size and type of windows, view treatments (including frit patterning, mullion/metal panel placement or other visual treatments) and exterior building elements may vary without notice. Suites are sold unfurnished. All illustrations are artist concept only. E.& O.E. April 2023 **1K-B**

**NATIONAL**  
H O M E S  
You are the blueprint™

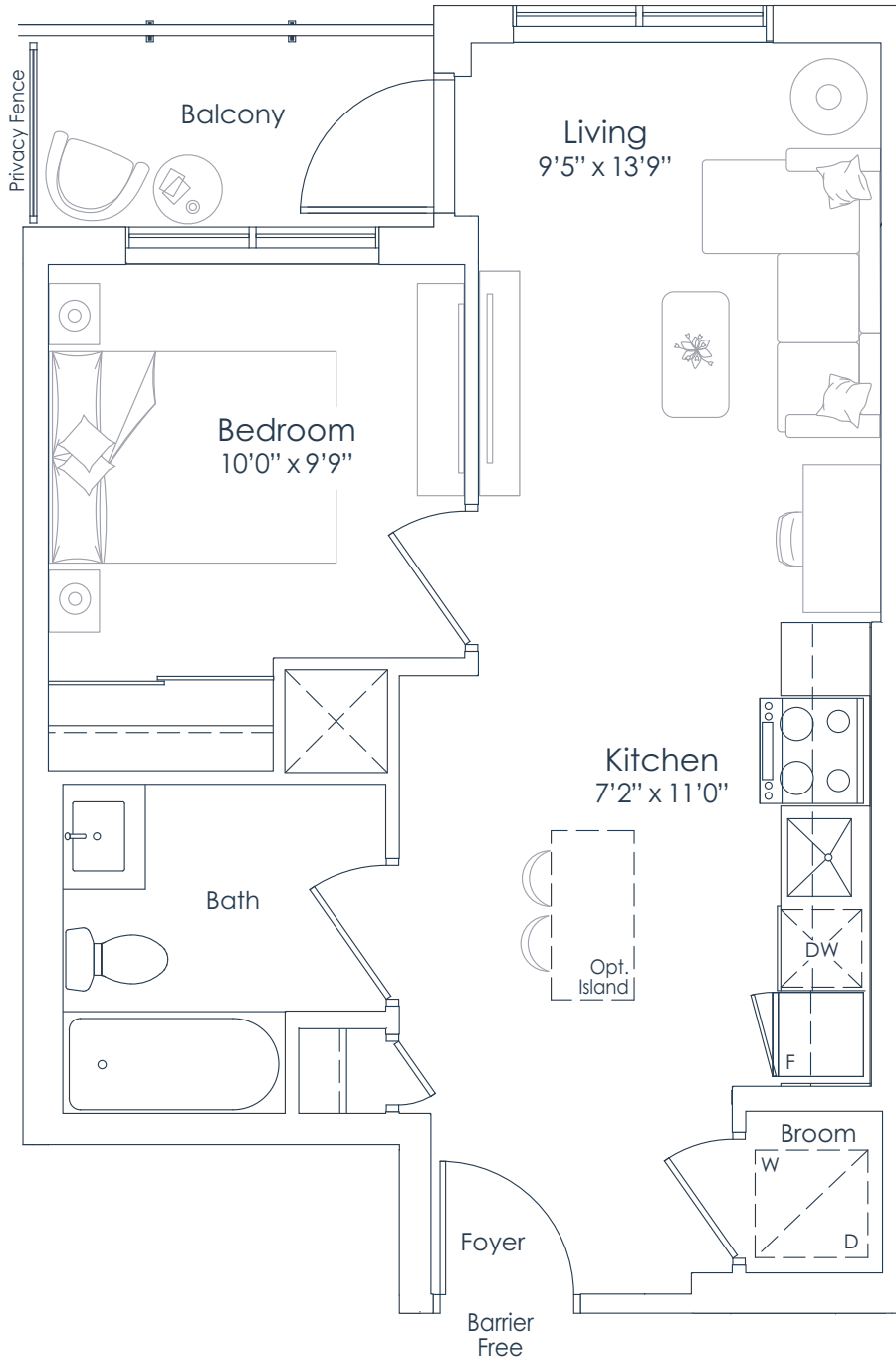


NORTHSHORE

INTERIOR: 546 SF  
EXTERIOR: 43 SF  
**TOTAL: 589 SF**  
FLOORS: 3 TO 6

# 546

1 BEDROOM



FLOORS 3 TO 6

This plan is not to scale and is subject to architectural review and revision. All details are approximate and subject to change without notice in order to comply with building site conditions and municipal, structural, architectural and/or Vendor requirements. Balconies and/or terraces, if any, are exclusive use common elements, shown for display purposes only and location, size and design of such are subject to change without notice. Actual unit and/or balcony and/or terrace may be a reverse mirror image of the plan presented. Units may include bulkheads, angled windows and/or angled columns. The location, size and type of windows, view treatments (including frit patterning, mullion/metal panel placement or other visual treatments) and exterior building elements may vary without notice. Suites are sold unfurnished. All illustrations are artist concept only. E.& O.E. April 2023 **1L (BF)**

**NATIONAL**  
H O M E S

You are the blueprint™