

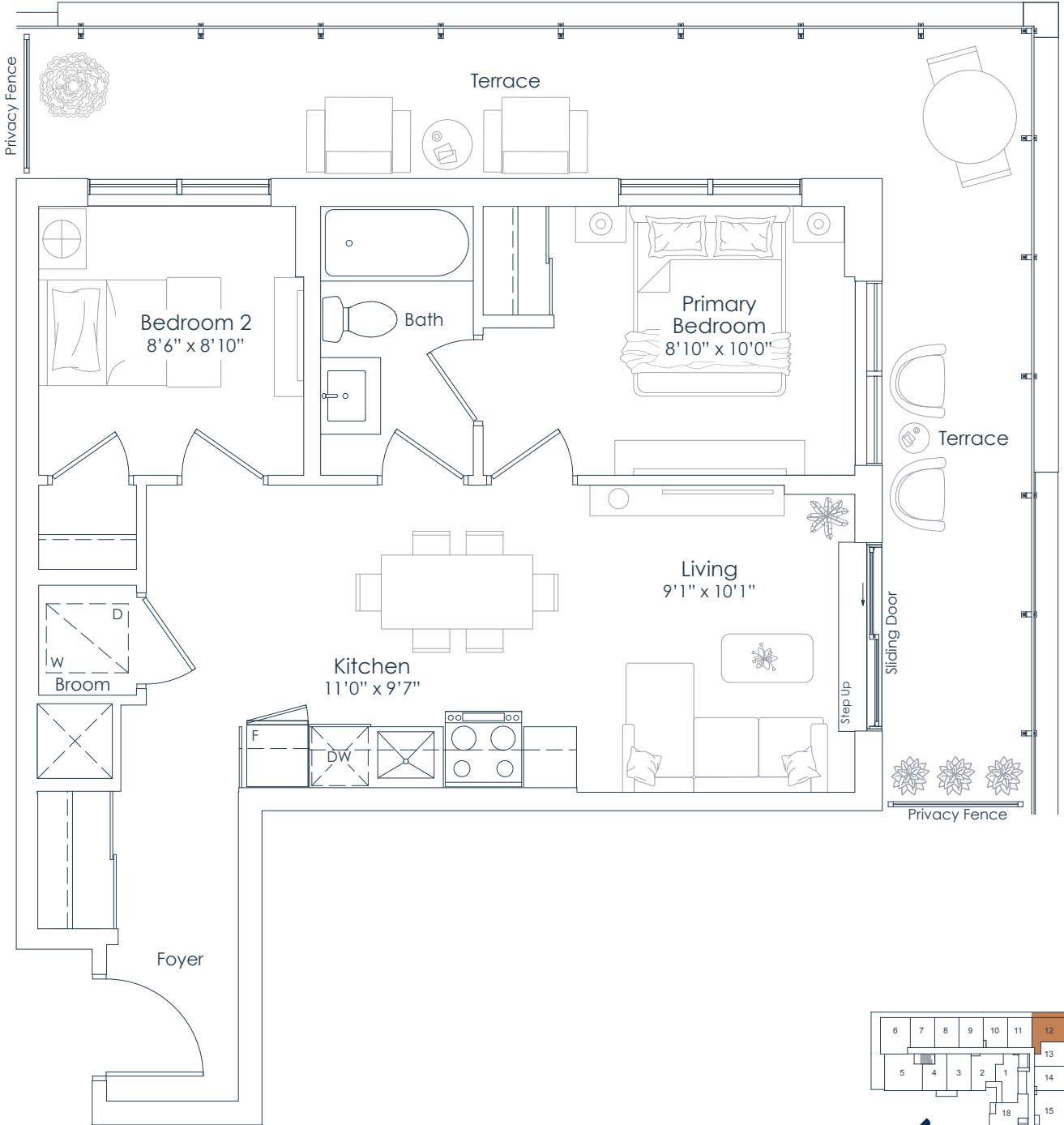


NORTHSHORE

INTERIOR: 632 SF
EXTERIOR: 283 SF
TOTAL: 915 SF
FLOOR: 7

632

2 BEDROOM



FLOOR 7

This plan is not to scale and is subject to architectural review and revision. All details are approximate and subject to change without notice in order to comply with building site conditions and municipal, structural, architectural and/or Vendor requirements. Balconies and/or terraces, if any, are exclusive use common elements, shown for display purposes only and location, size and design of such are subject to change without notice. Actual unit and/or balcony and/or terrace may be a reverse mirror image of the plan presented. Units may include bulkheads, angled windows and/or angled columns. The location, size and type of windows, view treatments (including frit patterning, mullion/metal panel placement or other visual treatments) and exterior building elements may vary without notice. Suites are sold unfurnished. All illustrations are artist concept only. E.& O.E. April 2023 **2A-T**



You are the blueprint™

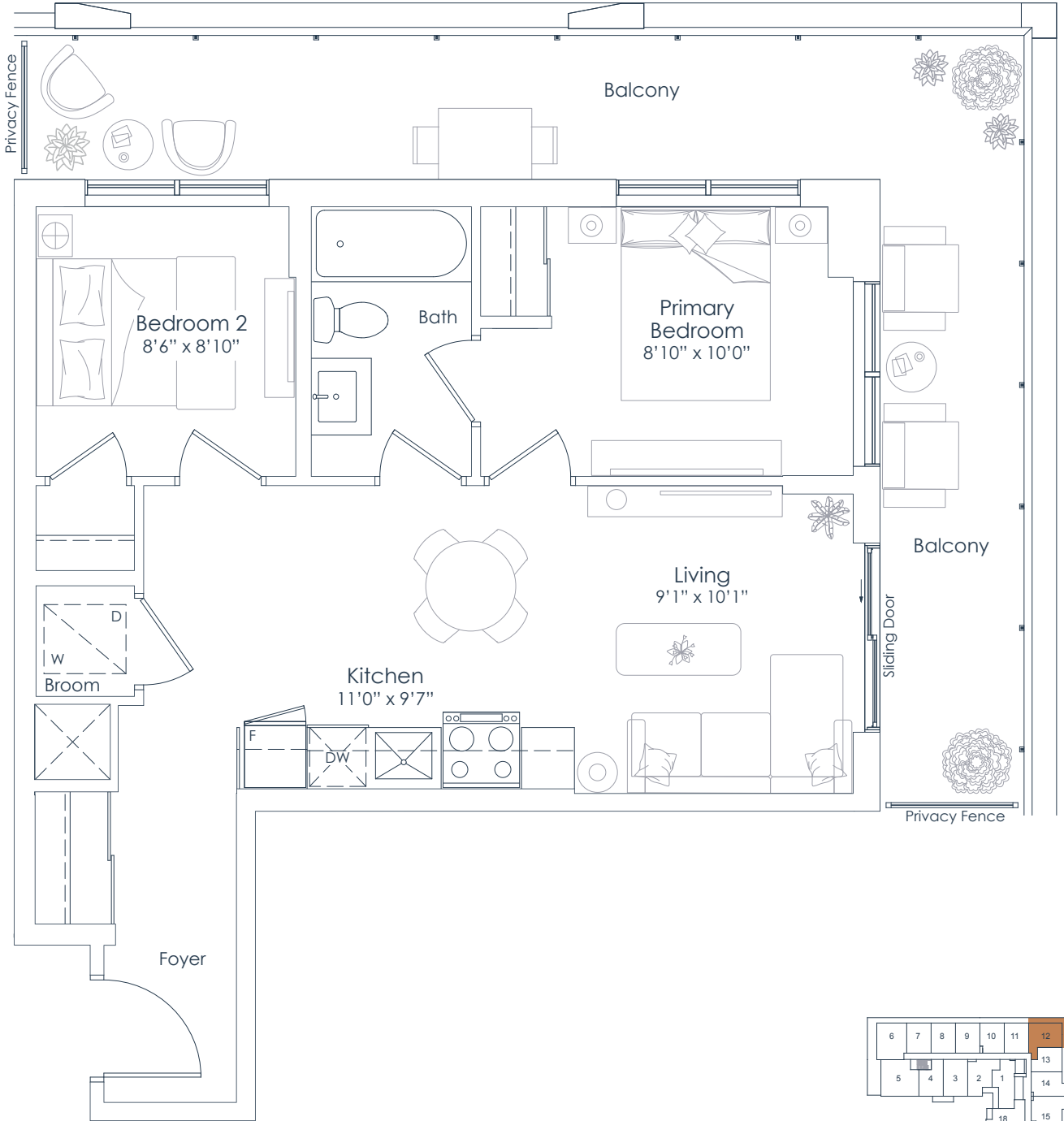


NORTHSHORE

INTERIOR: 632 SF
EXTERIOR: 283 SF
TOTAL: 915 SF
FLOOR: 8

632

2 BEDROOM



FLOOR 8

This plan is not to scale and is subject to architectural review and revision. All details are approximate and subject to change without notice in order to comply with building site conditions and municipal, structural, architectural and/or Vendor requirements. Balconies and/or terraces, if any, are exclusive use common elements, shown for display purposes only and location, size and design of such are subject to change without notice. Actual unit and/or balcony and/or terrace may be a reverse mirror image of the plan presented. Units may include bulkheads, angled windows and/or angled columns. The location, size and type of windows, view treatments (including frit patterning, mullion/metal panel placement or other visual treatments) and exterior building elements may vary without notice. Suites are sold unfurnished. All illustrations are artist concept only. E.& O.E. April 2023 **2A-B**

NATIONAL
H O M E S

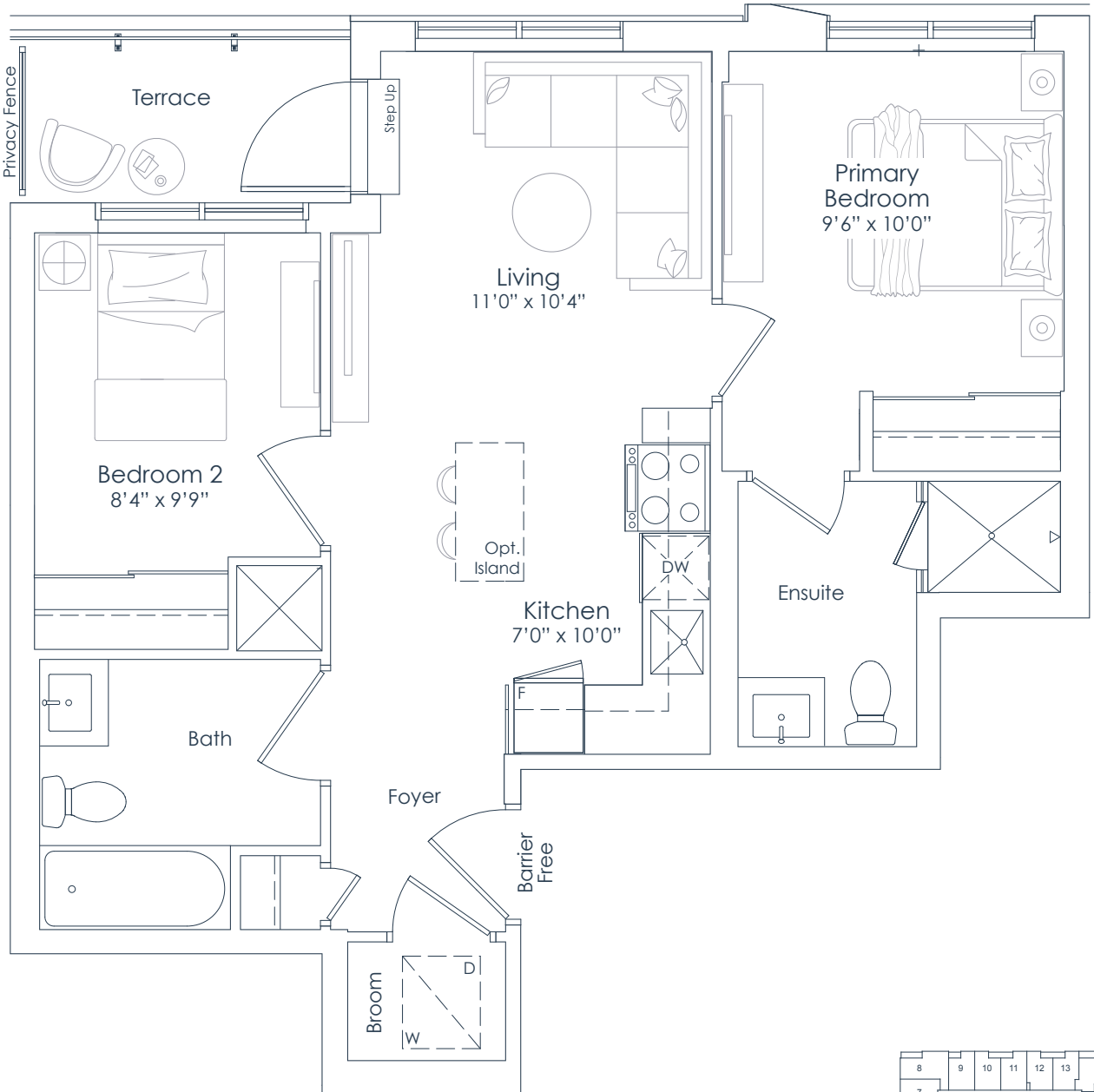
You are the blueprint™



NORTHSHORE

INTERIOR: 694 SF
EXTERIOR: 43 SF
TOTAL: 737 SF
FLOOR: 2

694
2 BEDROOM



FLOOR 2

This plan is not to scale and is subject to architectural review and revision. All details are approximate and subject to change without notice in order to comply with building site conditions and municipal, structural, architectural and/or Vendor requirements. Balconies and/or terraces, if any, are exclusive use common elements, shown for display purposes only and location, size and design of such are subject to change without notice. Actual unit and/or balcony and/or terrace may be a reverse mirror image of the plan presented. Units may include bulkheads, angled windows and/or angled columns. The location, size and type of windows, view treatments (including frit patterning, mullion/metal panel placement or other visual treatments) and exterior building elements may vary without notice. Suites are sold unfurnished. All illustrations are artist concept only. E.& O.E. April 2023 2B (BF)

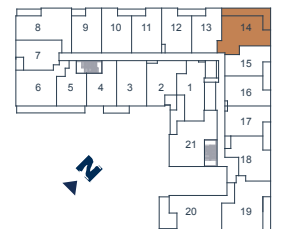
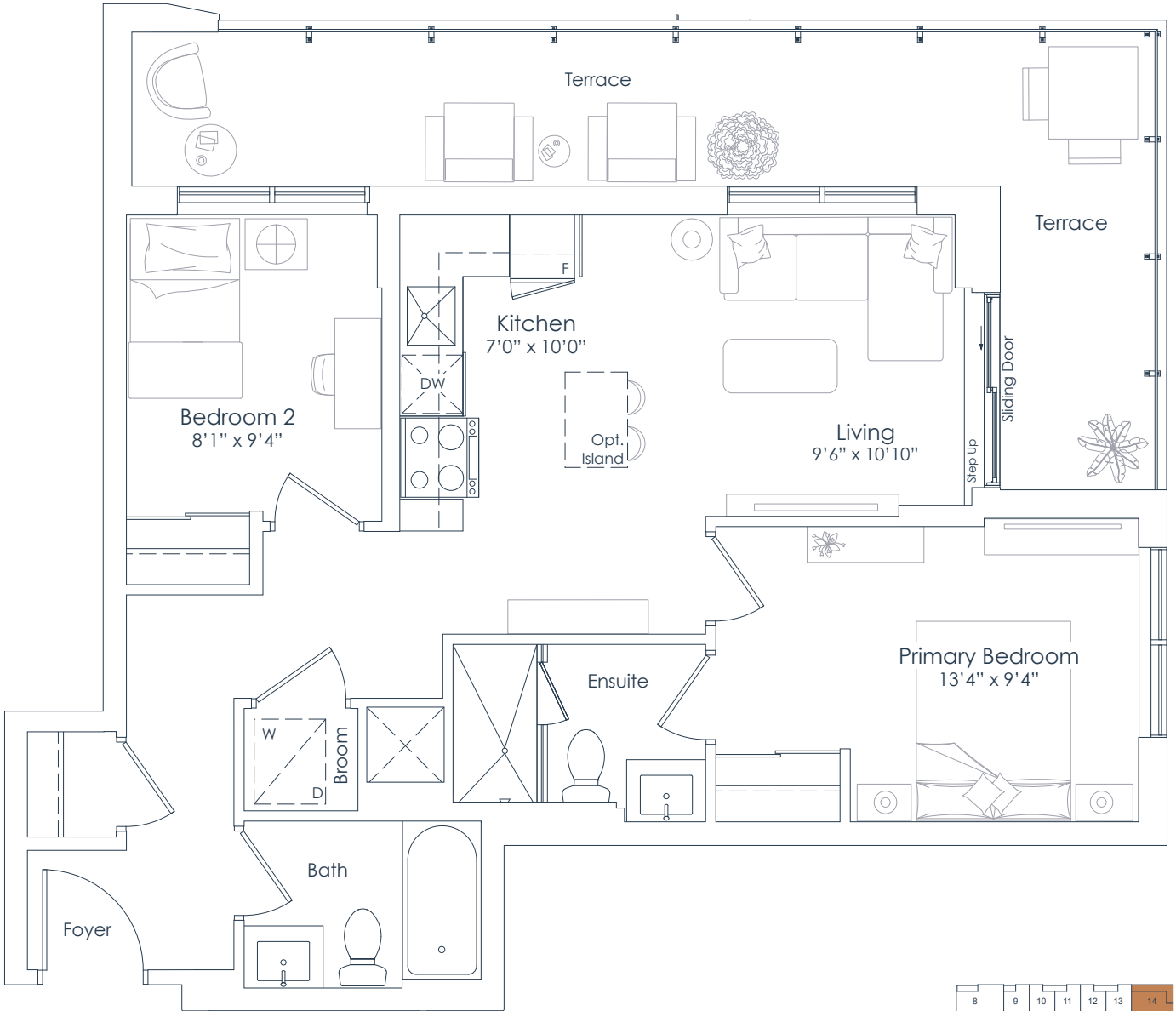
NATIONAL
H O M E S
You are the blueprint™



NORTHSHORE

INTERIOR: 719 SF
EXTERIOR: 185 SF
TOTAL: 904 SF
FLOOR: 2

719
2 BEDROOM



FLOOR 2

This plan is not to scale and is subject to architectural review and revision. All details are approximate and subject to change without notice in order to comply with building site conditions and municipal, structural, architectural and/or Vendor requirements. Balconies and/or terraces, if any, are exclusive use common elements, shown for display purposes only and location, size and design of such are subject to change without notice. Actual unit and/or balcony and/or terrace may be a reverse mirror image of the plan presented. Units may include bulkheads, angled windows and/or angled columns. The location, size and type of windows, view treatments (including frit patterning, mullion/metal panel placement or other visual treatments) and exterior building elements may vary without notice. Suites are sold unfurnished. All illustrations are artist concept only. E.& O.E. April 2023 **2C-T**

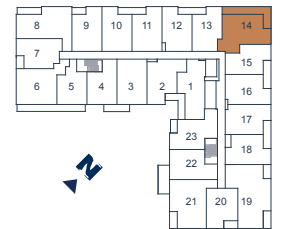
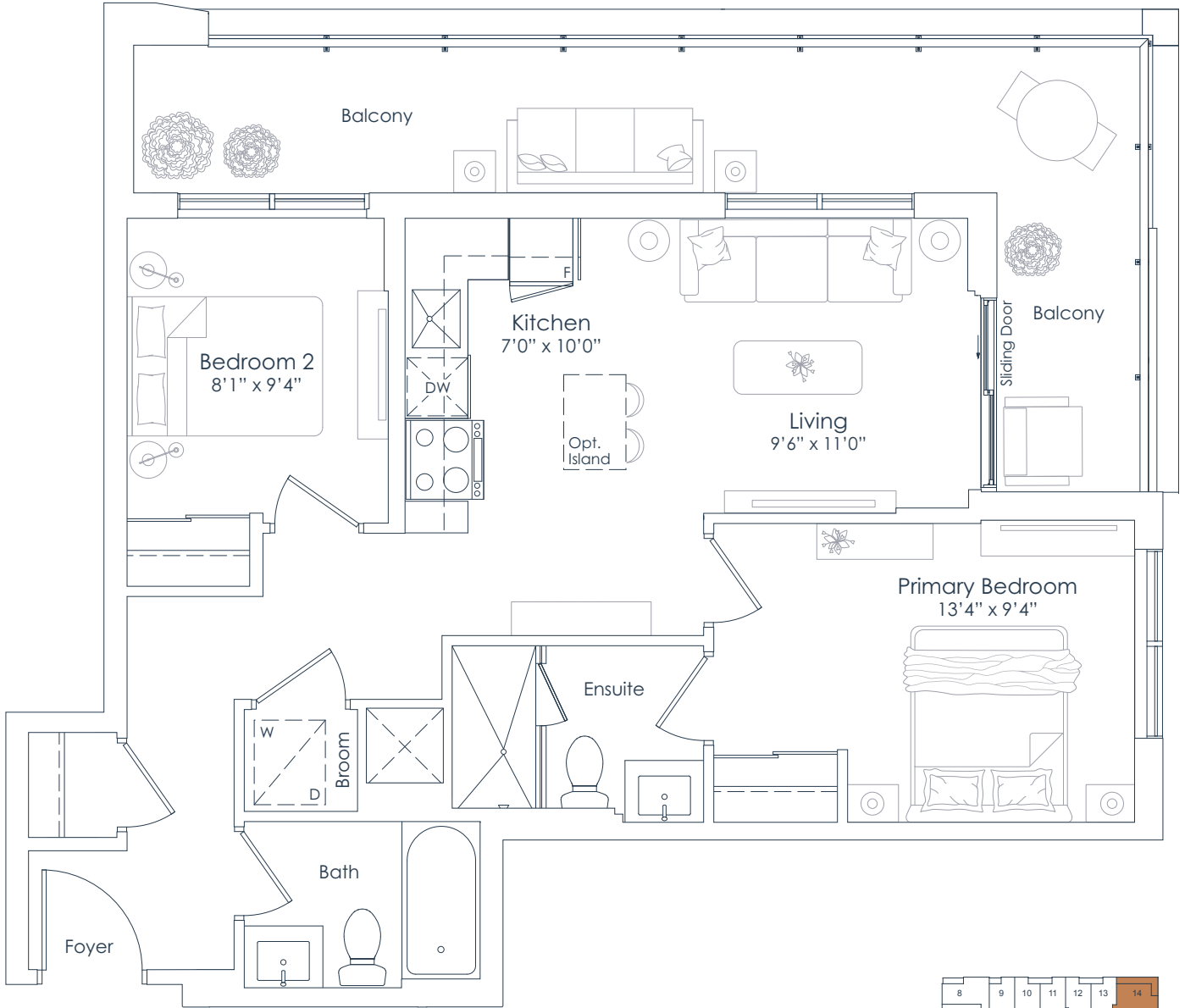
NATIONAL
H O M E S
You are the blueprint™



NORTHSHORE

INTERIOR: 719 SF
EXTERIOR: 185 SF
TOTAL: 904 SF
FLOORS: 3 TO 6

719
2 BEDROOM



FLOORS 3 TO 6

This plan is not to scale and is subject to architectural review and revision. All details are approximate and subject to change without notice in order to comply with building site conditions and municipal, structural, architectural and/or Vendor requirements. Balconies and/or terraces, if any, are exclusive use common elements, shown for display purposes only and location, size and design of such are subject to change without notice. Actual unit and/or balcony and/or terrace may be a reverse mirror image of the plan presented. Units may include bulkheads, angled windows and/or angled columns. The location, size and type of windows, view treatments (including frit patterning, mullion/metal panel placement or other visual treatments) and exterior building elements may vary without notice. Suites are sold unfurnished. All illustrations are artist concept only. E.& O.E. April 2023 **2C-B**

NATIONAL
H O M E S
You are the blueprint™

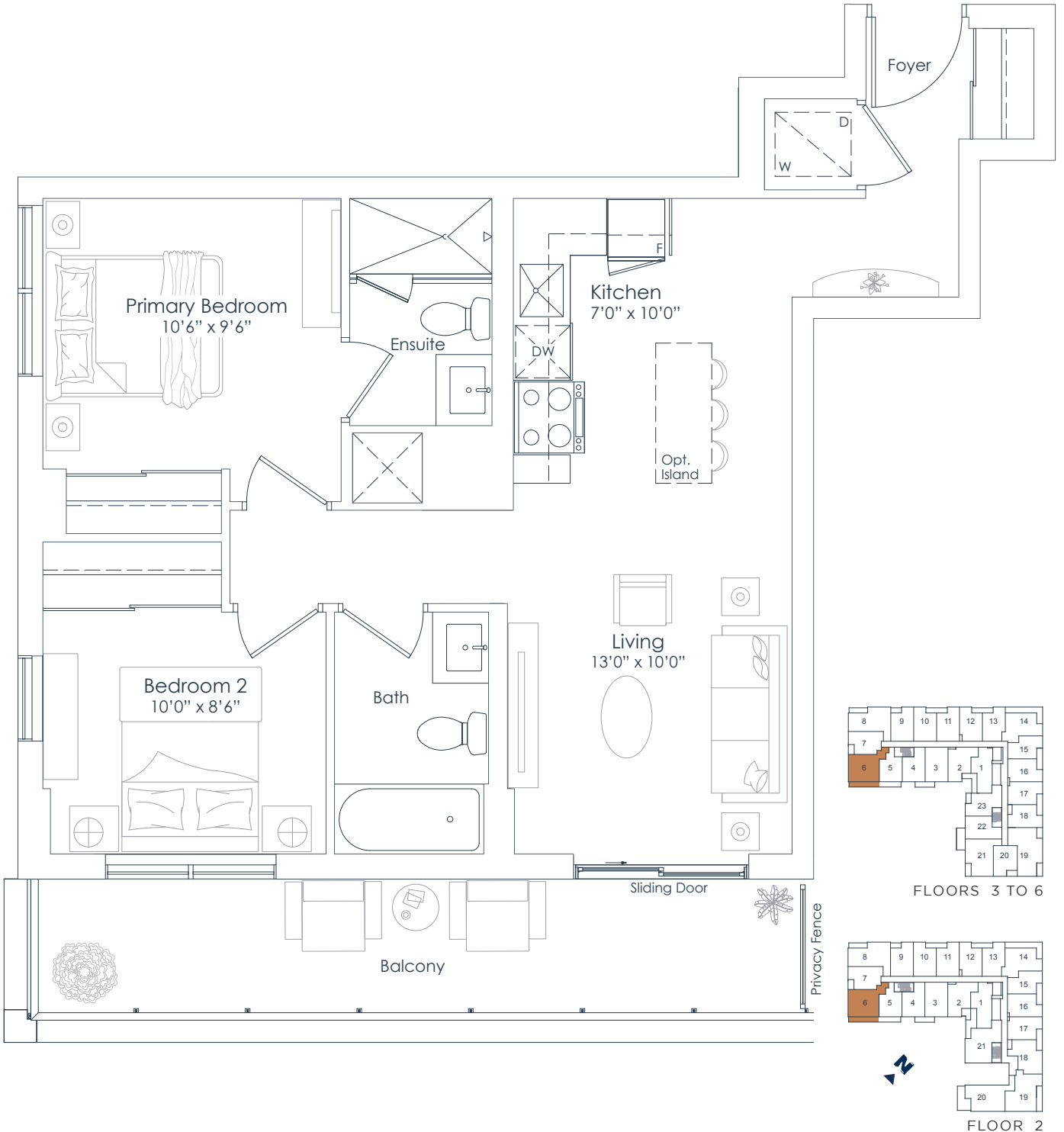


NORTHSHORE

INTERIOR: 748 SF
EXTERIOR: 126 SF
TOTAL: 874 SF
FLOORS: 2 TO 6

748

2 BEDROOM



This plan is not to scale and is subject to architectural review and revision. All details are approximate and subject to change without notice in order to comply with building site conditions and municipal, structural, architectural and/or Vendor requirements. Balconies and/or terraces, if any, are exclusive use common elements, shown for display purposes only and location, size and design of such are subject to change without notice. Actual unit and/or balcony and/or terrace may be a reverse mirror image of the plan presented. Units may include bulkheads, angled windows and/or angled columns. The location, size and type of windows, view treatments (including frit patterning, mullion/metal panel placement or other visual treatments) and exterior building elements may vary without notice. Suites are sold unfurnished. All illustrations are artist concept only. E.& O.E. April 2023 2D

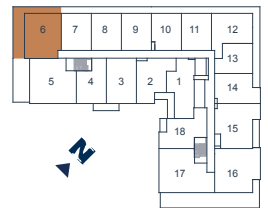
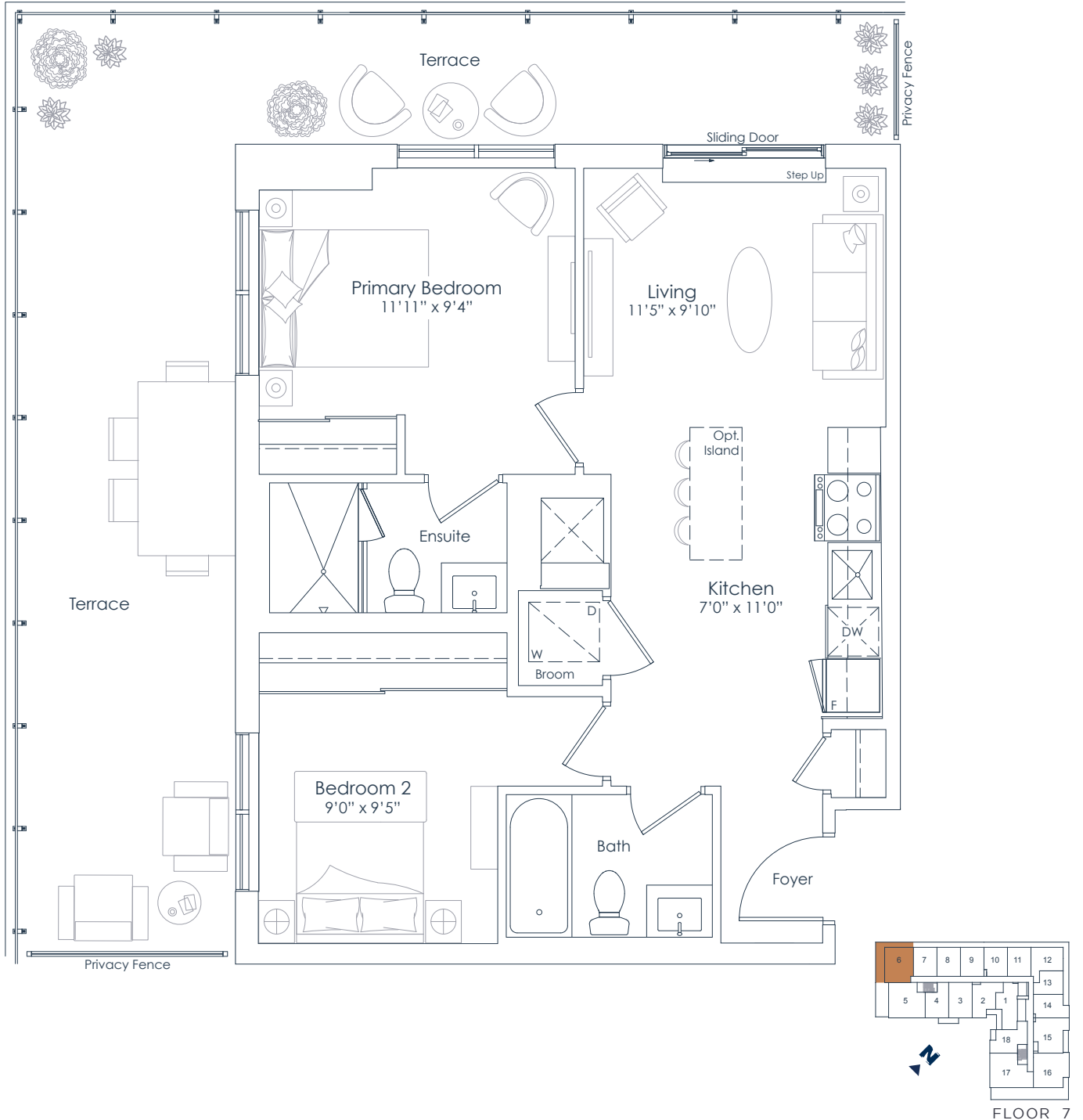
NATIONAL
H O M E S
You are the blueprint™



NORTHSHORE

INTERIOR: 749 SF
EXTERIOR: 386 SF
TOTAL: 1,135 SF
FLOOR: 7

749
2 BEDROOM



FLOOR 7

This plan is not to scale and is subject to architectural review and revision. All details are approximate and subject to change without notice in order to comply with building site conditions and municipal, structural, architectural and/or Vendor requirements. Balconies and/or terraces, if any, are exclusive use common elements, shown for display purposes only and location, size and design of such are subject to change without notice. Actual unit and/or balcony and/or terrace may be a reverse mirror image of the plan presented. Units may include bulkheads, angled windows and/or angled columns. The location, size and type of windows, view treatments (including frit patterning, mullion/metal panel placement or other visual treatments) and exterior building elements may vary without notice. Suites are sold unfurnished. All illustrations are artist concept only. E.& O.E. April 2023 2E-T

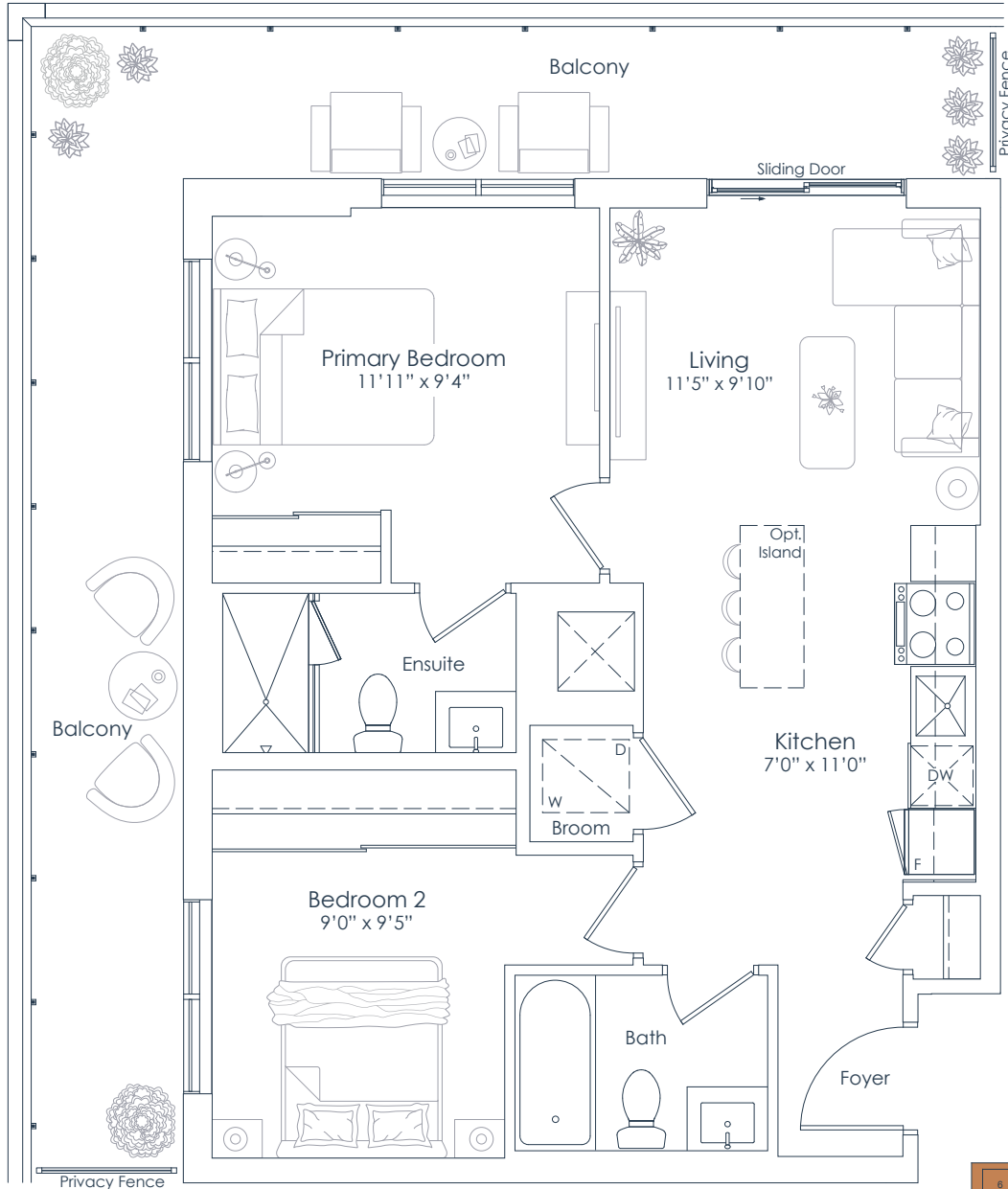
NATIONAL
H O M E S
You are the blueprint™



NORTHSHORE

INTERIOR: 749 SF
EXTERIOR: 283 SF
TOTAL: 1,032 SF
FLOOR: 8

749
2 BEDROOM



FLOOR 8

This plan is not to scale and is subject to architectural review and revision. All details are approximate and subject to change without notice in order to comply with building site conditions and municipal, structural, architectural and/or Vendor requirements. Balconies and/or terraces, if any, are exclusive use common elements, shown for display purposes only and location, size and design of such are subject to change without notice. Actual unit and/or balcony and/or terrace may be a reverse mirror image of the plan presented. Units may include bulkheads, angled windows and/or angled columns. The location, size and type of windows, view treatments (including frit patterning, mullion/metal panel placement or other visual treatments) and exterior building elements may vary without notice. Suites are sold unfurnished. All illustrations are artist concept only. E.& O.E. April 2023 **2E-B**

NATIONAL
H O M E S
You are the blueprint™

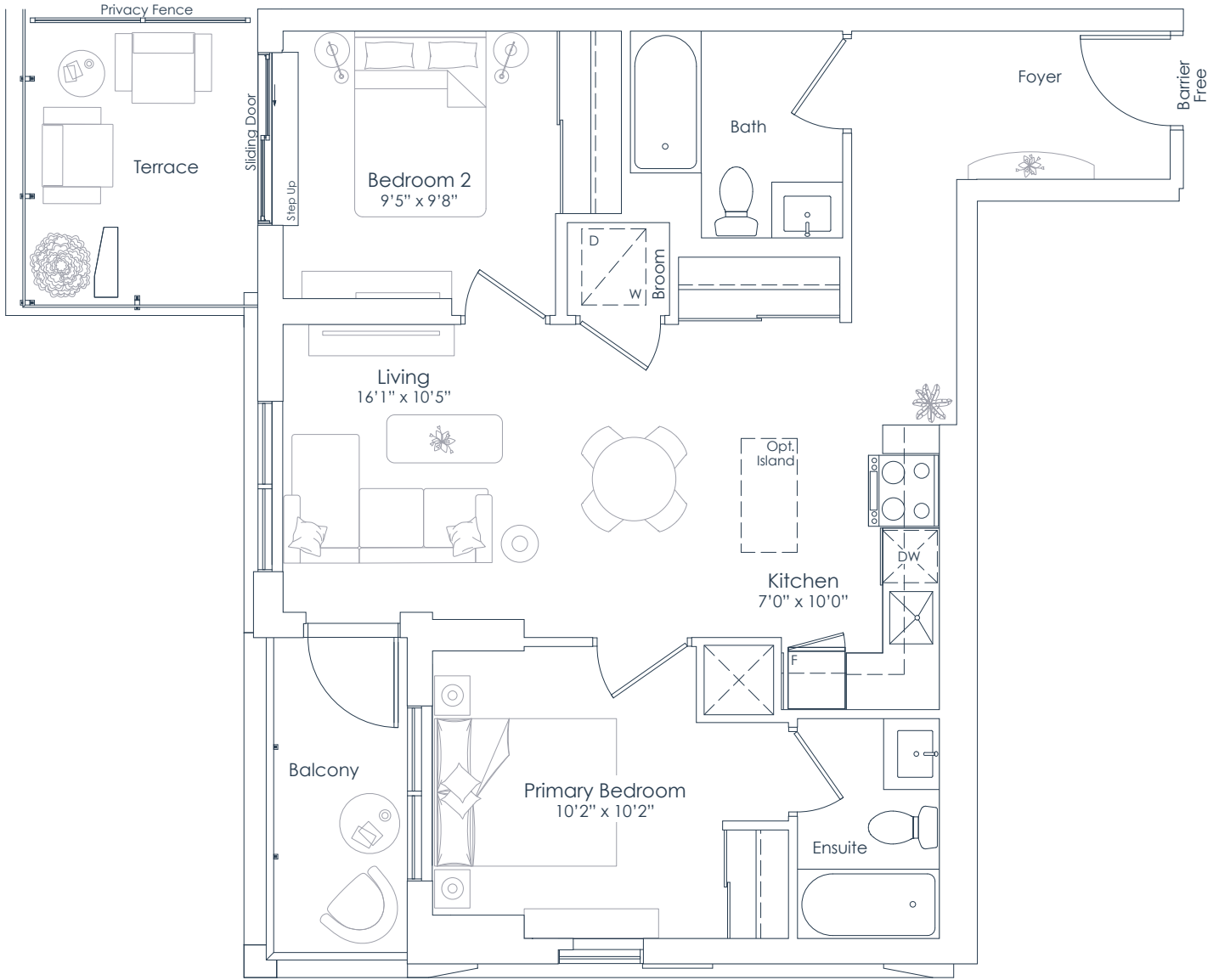


NORTHSHORE

INTERIOR: 810 SF
EXTERIOR: 134 SF
TOTAL: 944 SF
FLOOR: 3

810

2 BEDROOM



FLOOR 3

This plan is not to scale and is subject to architectural review and revision. All details are approximate and subject to change without notice in order to comply with building site conditions and municipal, structural, architectural and/or Vendor requirements. Balconies and/or terraces, if any, are exclusive use common elements, shown for display purposes only and location, size and design of such are subject to change without notice. Actual unit and/or balcony and/or terrace may be a reverse mirror image of the plan presented. Units may include bulkheads, angled windows and/or angled columns. The location, size and type of windows, view treatments (including frit patterning, mullion/metal panel placement or other visual treatments) and exterior building elements may vary without notice. Suites are sold unfurnished. All illustrations are artist concept only. E.& O.E. April 2023 **2F-T (BF)**

NATIONAL
H O M E S
You are the blueprint™

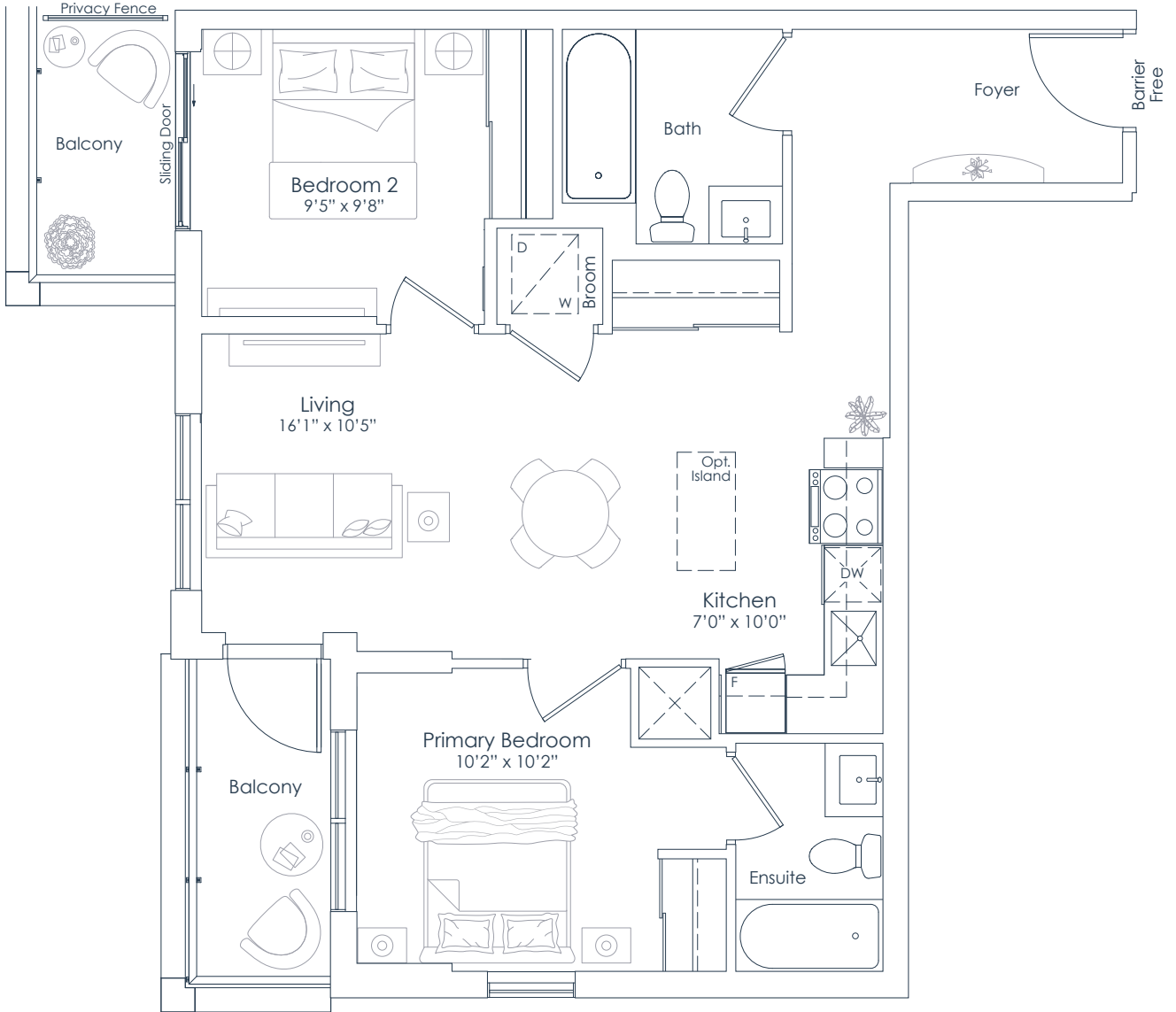


NORTHSHORE

INTERIOR: 810 SF
EXTERIOR: 90 SF
TOTAL: 900 SF
FLOORS: 4 TO 6

810

2 BEDROOM



FLOORS 4 TO 6

This plan is not to scale and is subject to architectural review and revision. All details are approximate and subject to change without notice in order to comply with building site conditions and municipal, structural, architectural and/or Vendor requirements. Balconies and/or terraces, if any, are exclusive use common elements, shown for display purposes only and location, size and design of such are subject to change without notice. Actual unit and/or balcony and/or terrace may be a reverse mirror image of the plan presented. Units may include bulkheads, angled windows and/or angled columns. The location, size and type of windows, view treatments (including frit patterning, mullion/metal panel placement or other visual treatments) and exterior building elements may vary without notice. Suites are sold unfurnished. All illustrations are artist concept only. E.& O.E. April 2023 **2F-B (BF)**



You are the blueprint™

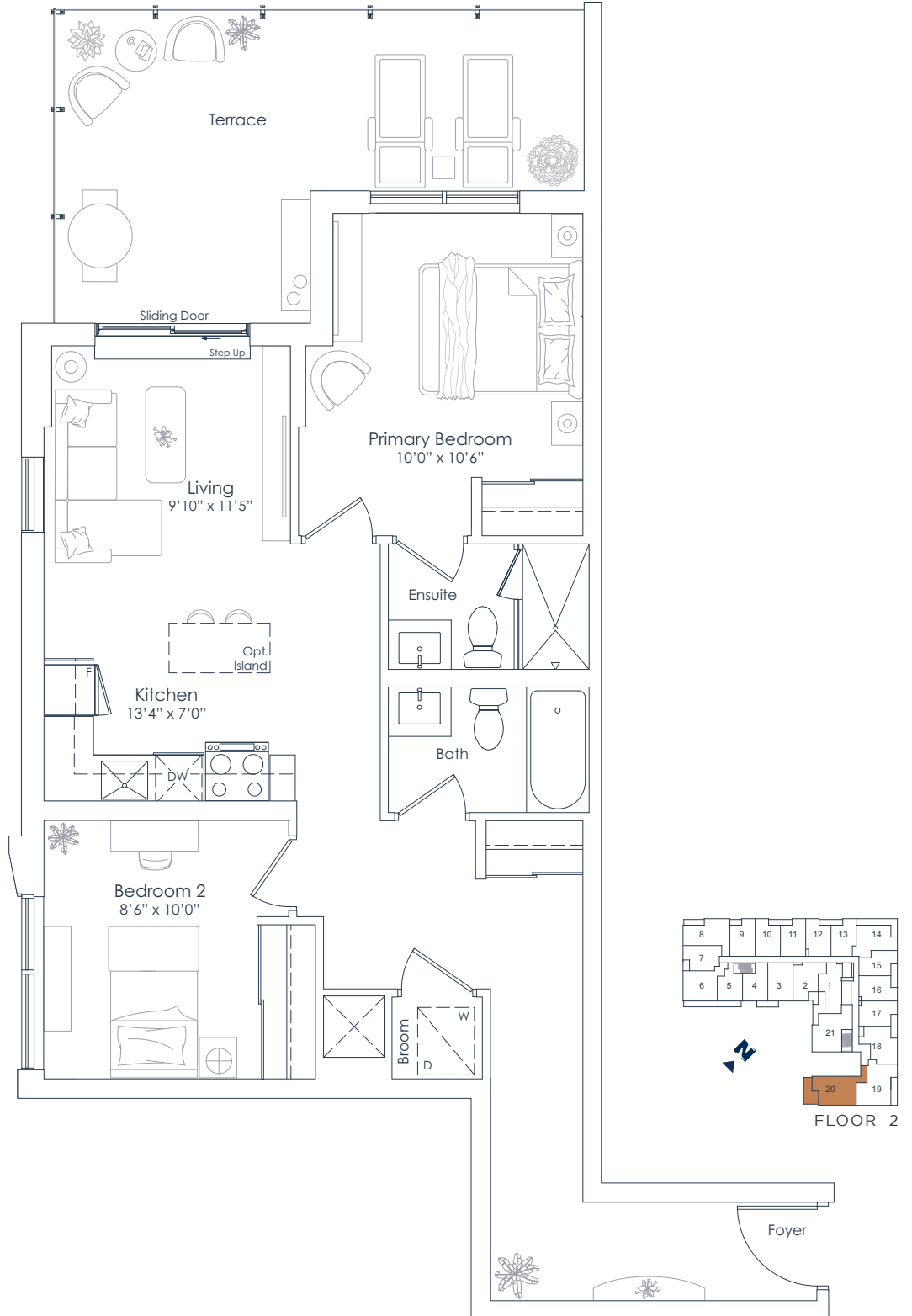


NORTHSHORE

INTERIOR: 862 SF
EXTERIOR: 189 SF
TOTAL: 1,051 SF
FLOOR: 2

862

2 BEDROOM



This plan is not to scale and is subject to architectural review and revision. All details are approximate and subject to change without notice in order to comply with building site conditions and municipal, structural, architectural and/or Vendor requirements. Balconies and/or terraces, if any, are exclusive use common elements, shown for display purposes only and location, size and design of such are subject to change without notice. Actual unit and/or balcony and/or terrace may be a reverse mirror image of the plan presented. Units may include bulkheads, angled windows and/or angled columns. The location, size and type of windows, view treatments (including frit patterning, mullion/metal panel placement or other visual treatments) and exterior building elements may vary without notice. Suites are sold unfurnished. All illustrations are artist concept only. E.& O.E. April 2023 2H

NATIONAL
H O M E S
You are the blueprint™

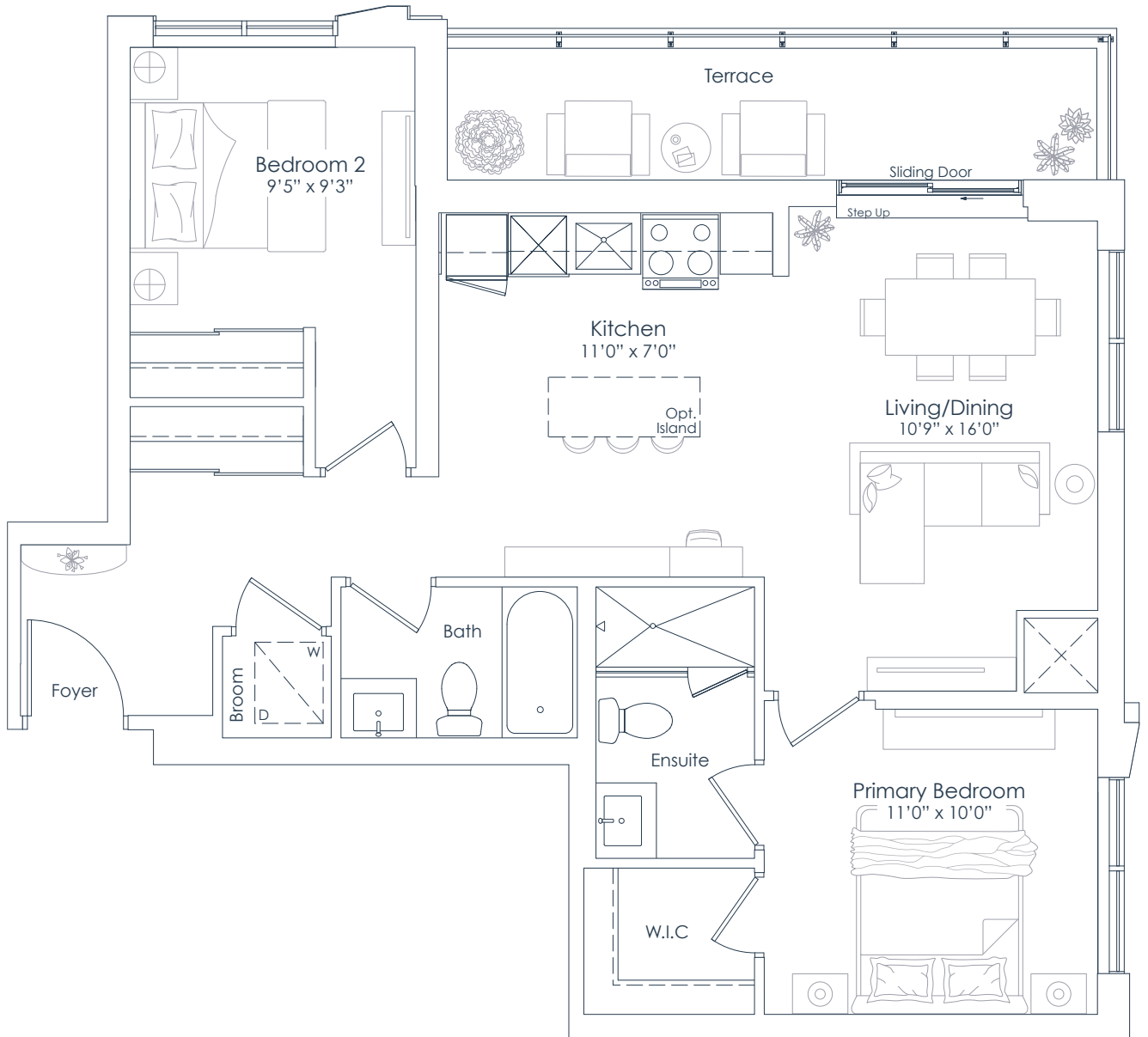


NORTHSHORE

INTERIOR: 872 SF
EXTERIOR: 98 SF
TOTAL: 970 SF
FLOOR: 2

872

2 BEDROOM



FLOOR 2

This plan is not to scale and is subject to architectural review and revision. All details are approximate and subject to change without notice in order to comply with building site conditions and municipal, structural, architectural and/or Vendor requirements. Balconies and/or terraces, if any, are exclusive use common elements, shown for display purposes only and location, size and design of such are subject to change without notice. Actual unit and/or balcony and/or terrace may be a reverse mirror image of the plan presented. Units may include bulkheads, angled windows and/or angled columns. The location, size and type of windows, view treatments (including frit patterning, mullion/metal panel placement or other visual treatments) and exterior building elements may vary without notice. Suites are sold unfurnished. All illustrations are artist concept only. E.& O.E. April 2023 2J



You are the blueprint™