

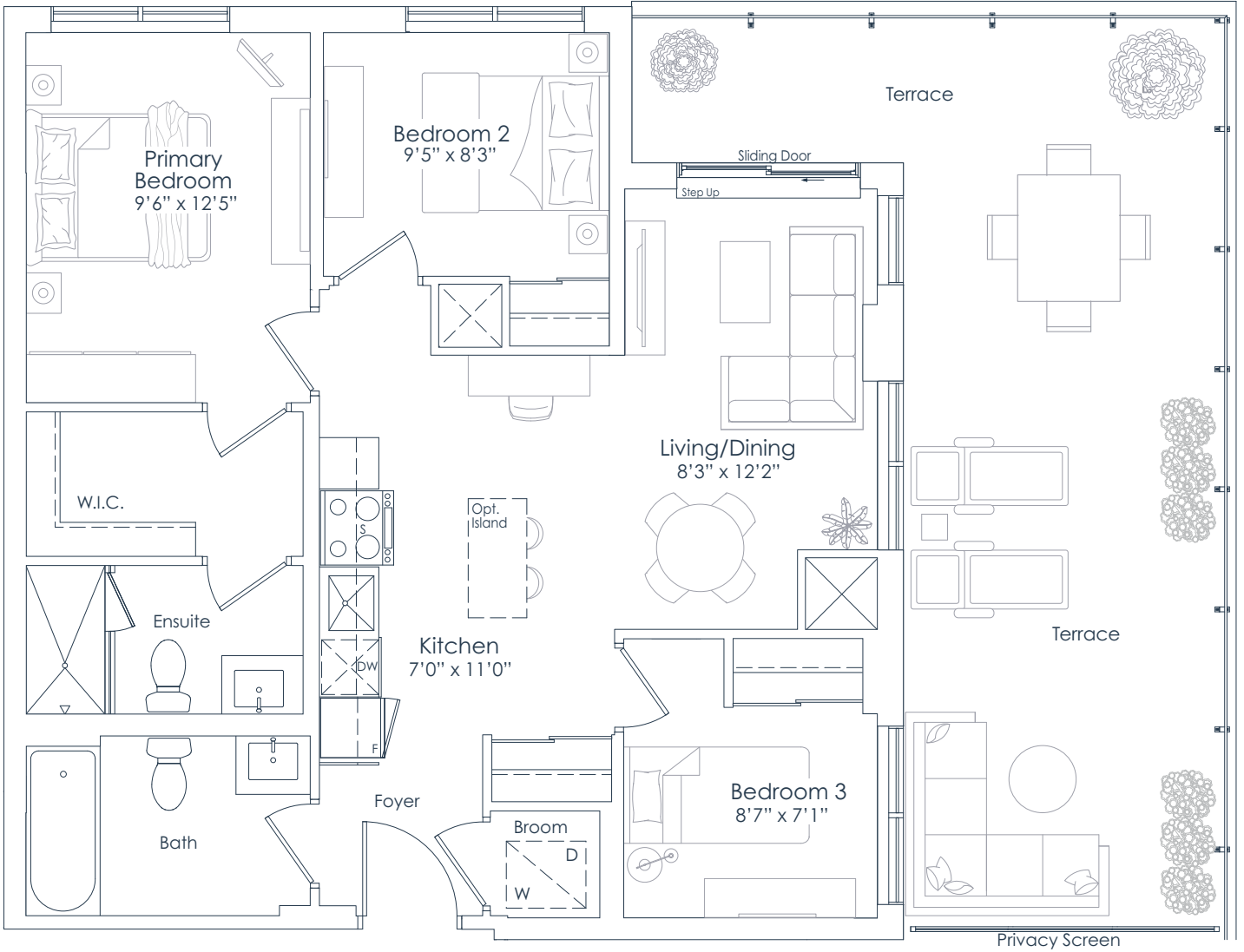


NORTHSHORE

INTERIOR: 882 SF  
EXTERIOR: 355 SF  
**TOTAL: 1,237 SF**  
FLOOR: 7

# 882

**3 BEDROOM**



FLOOR 7

This plan is not to scale and is subject to architectural review and revision. All details are approximate and subject to change without notice in order to comply with building site conditions and municipal, structural, architectural and/or Vendor requirements. Balconies and/or terraces, if any, are exclusive use common elements, shown for display purposes only and location, size and design of such are subject to change without notice. Actual unit and/or balcony and/or terrace may be a reverse mirror image of the plan presented. Units may include bulkheads, angled windows and/or angled columns. The location, size and type of windows, view treatments (including frit patterning, mullion/metal panel placement or other visual treatments) and exterior building elements may vary without notice. Suites are sold unfurnished. All illustrations are artist concept only. E.& O.E. April 2023 **3A-T**



You are the blueprint™

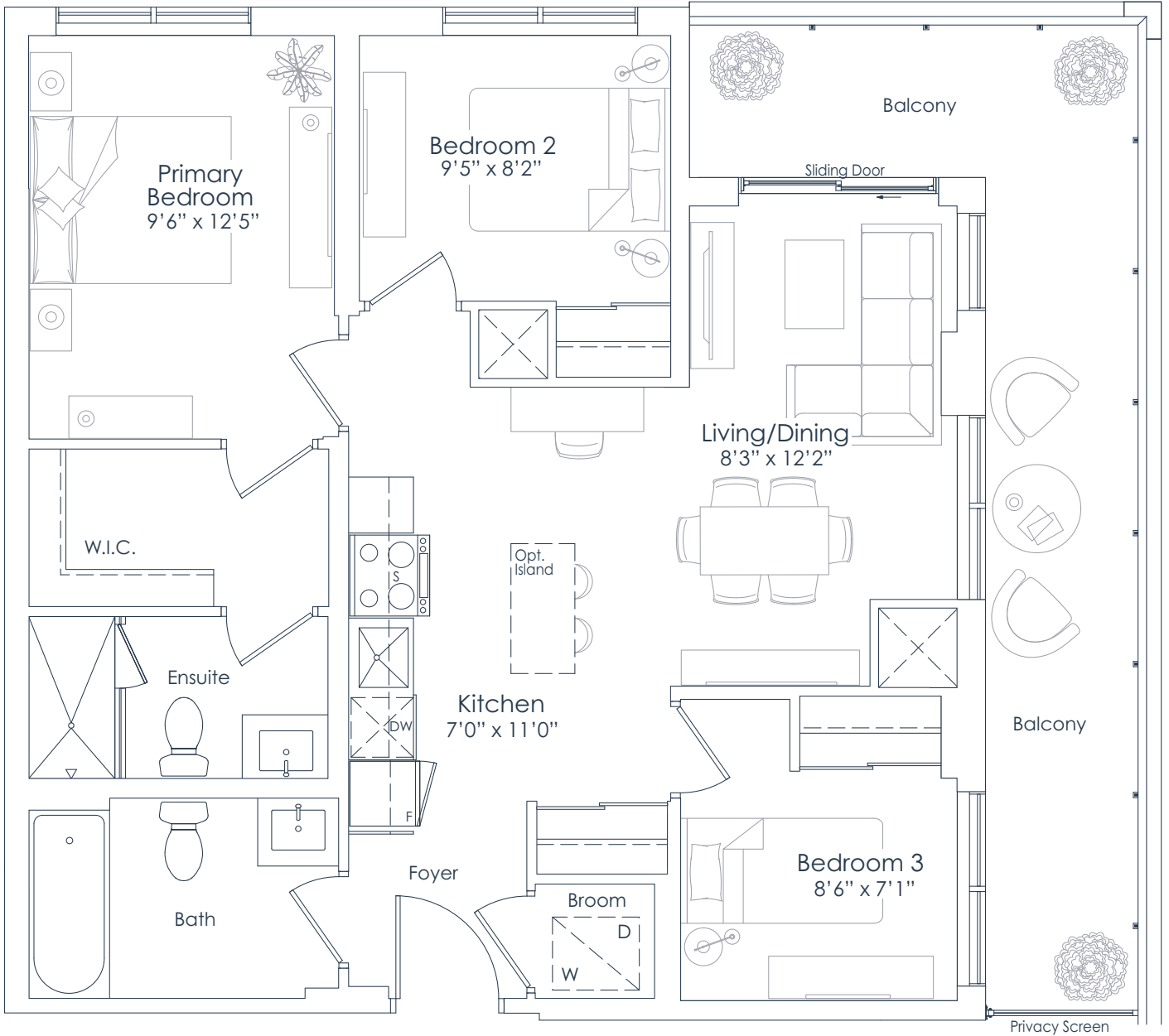


NORTHSHORE

INTERIOR: 882 SF  
EXTERIOR: 185 SF  
**TOTAL: 1,067 SF**  
FLOOR: 8

# 882

**3 BEDROOM**



FLOOR 8

This plan is not to scale and is subject to architectural review and revision. All details are approximate and subject to change without notice in order to comply with building site conditions and municipal, structural, architectural and/or Vendor requirements. Balconies and/or terraces, if any, are exclusive use common elements, shown for display purposes only and location, size and design of such are subject to change without notice. Actual unit and/or balcony and/or terrace may be a reverse mirror image of the plan presented. Units may include bulkheads, angled windows and/or angled columns. The location, size and type of windows, view treatments (including frit patterning, mullion/metal panel placement or other visual treatments) and exterior building elements may vary without notice. Suites are sold unfurnished. All illustrations are artist concept only. E.& O.E. April 2023 **3A-B**

**NATIONAL**  
H O M E S

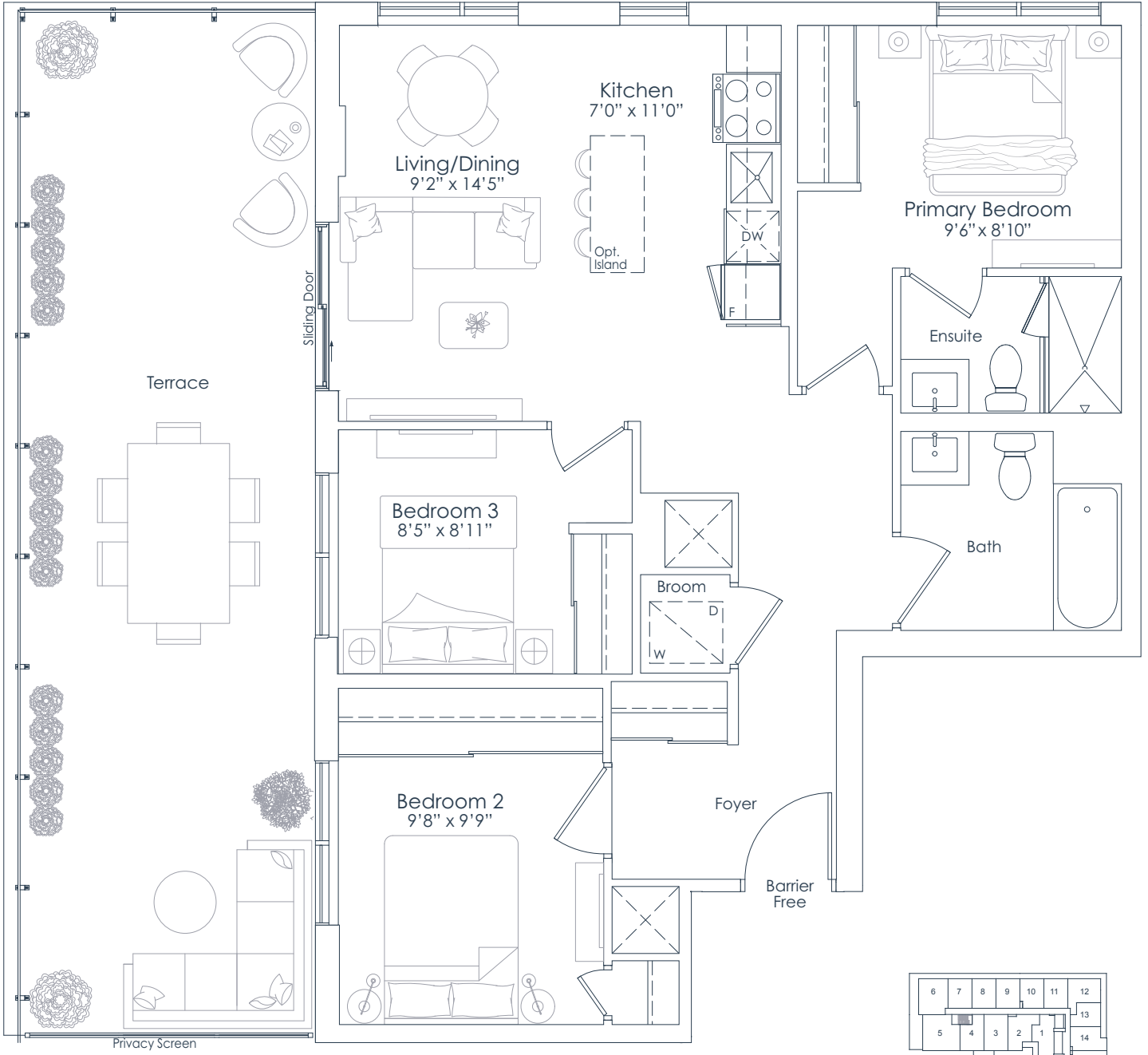
You are the blueprint™



NORTHSHORE

INTERIOR: 959 SF  
EXTERIOR: 382 SF  
**TOTAL: 1,341 SF**  
FLOOR: 7

**959**  
3 BEDROOM



FLOOR 7

This plan is not to scale and is subject to architectural review and revision. All details are approximate and subject to change without notice in order to comply with building site conditions and municipal, structural, architectural and/or Vendor requirements. Balconies and/or terraces, if any, are exclusive use common elements, shown for display purposes only and location, size and design of such are subject to change without notice. Actual unit and/or balcony and/or terrace may be a reverse mirror image of the plan presented. Units may include bulkheads, angled windows and/or angled columns. The location, size and type of windows, view treatments (including frit patterning, mullion/metal panel placement or other visual treatments) and exterior building elements may vary without notice. Suites are sold unfurnished. All illustrations are artist concept only. E.& O.E. April 2023 **3B-T (BF)**

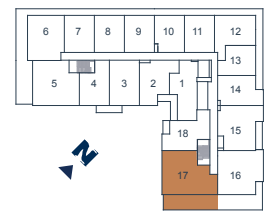
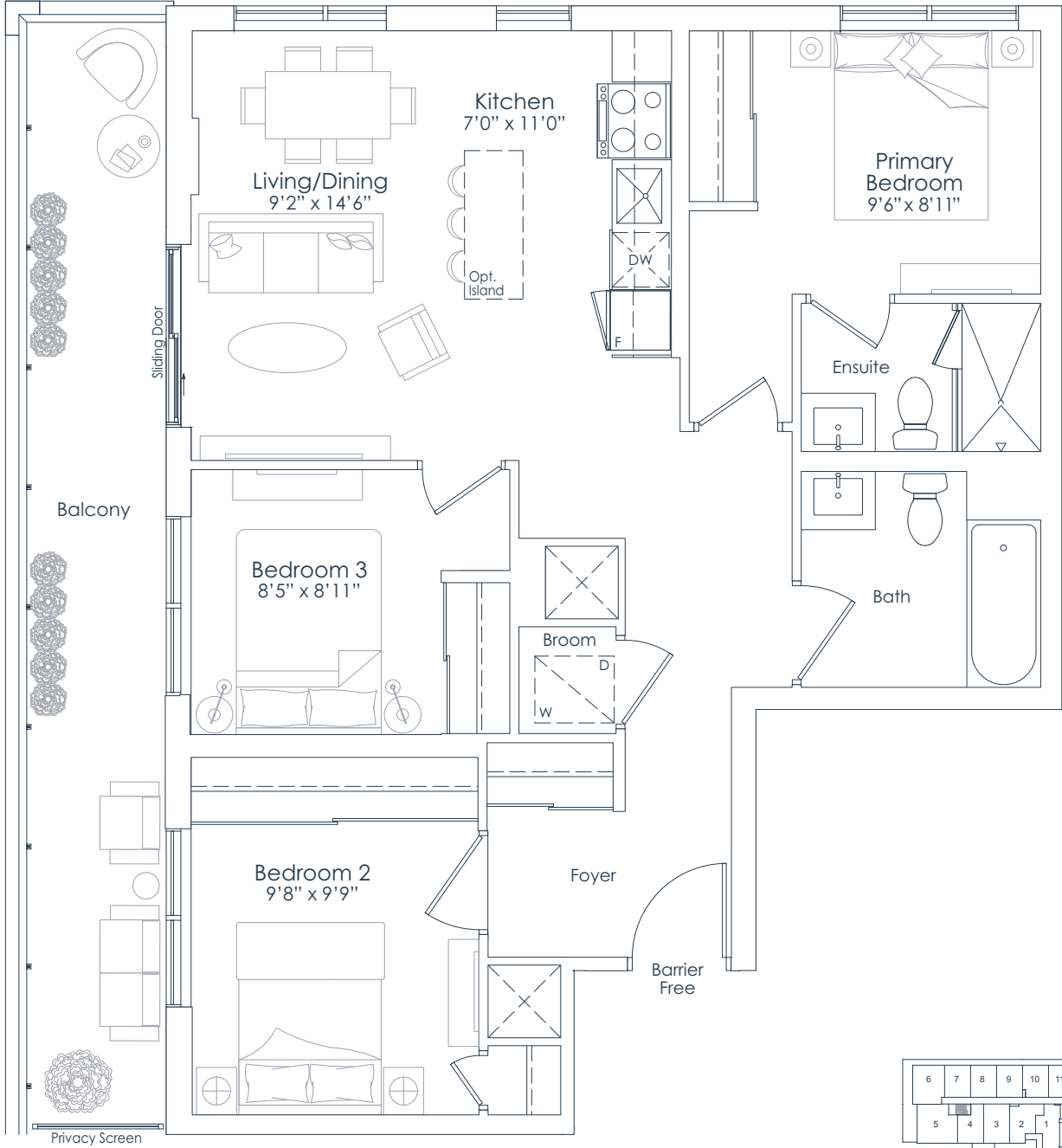
**NATIONAL**  
H O M E S  
You are the blueprint™



NORTHSHORE

INTERIOR: 959 SF  
EXTERIOR: 175 SF  
**TOTAL: 1,134 SF**  
FLOOR: 8

**959**  
3 BEDROOM



FLOOR 8

This plan is not to scale and is subject to architectural review and revision. All details are approximate and subject to change without notice in order to comply with building site conditions and municipal, structural, architectural and/or Vendor requirements. Balconies and/or terraces, if any, are exclusive use common elements, shown for display purposes only and location, size and design of such are subject to change without notice. Actual unit and/or balcony and/or terrace may be a reverse mirror image of the plan presented. Units may include bulkheads, angled windows and/or angled columns. The location, size and type of windows, view treatments (including frit patterning, mullion/metal panel placement or other visual treatments) and exterior building elements may vary without notice. Suites are sold unfurnished. All illustrations are artist concept only. E.& O.E. April 2023 **3B-B (BF)**

**NATIONAL**  
H O M E S  
You are the blueprint™

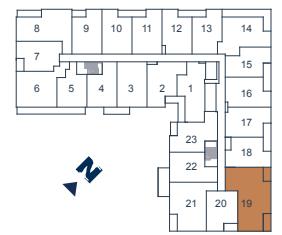
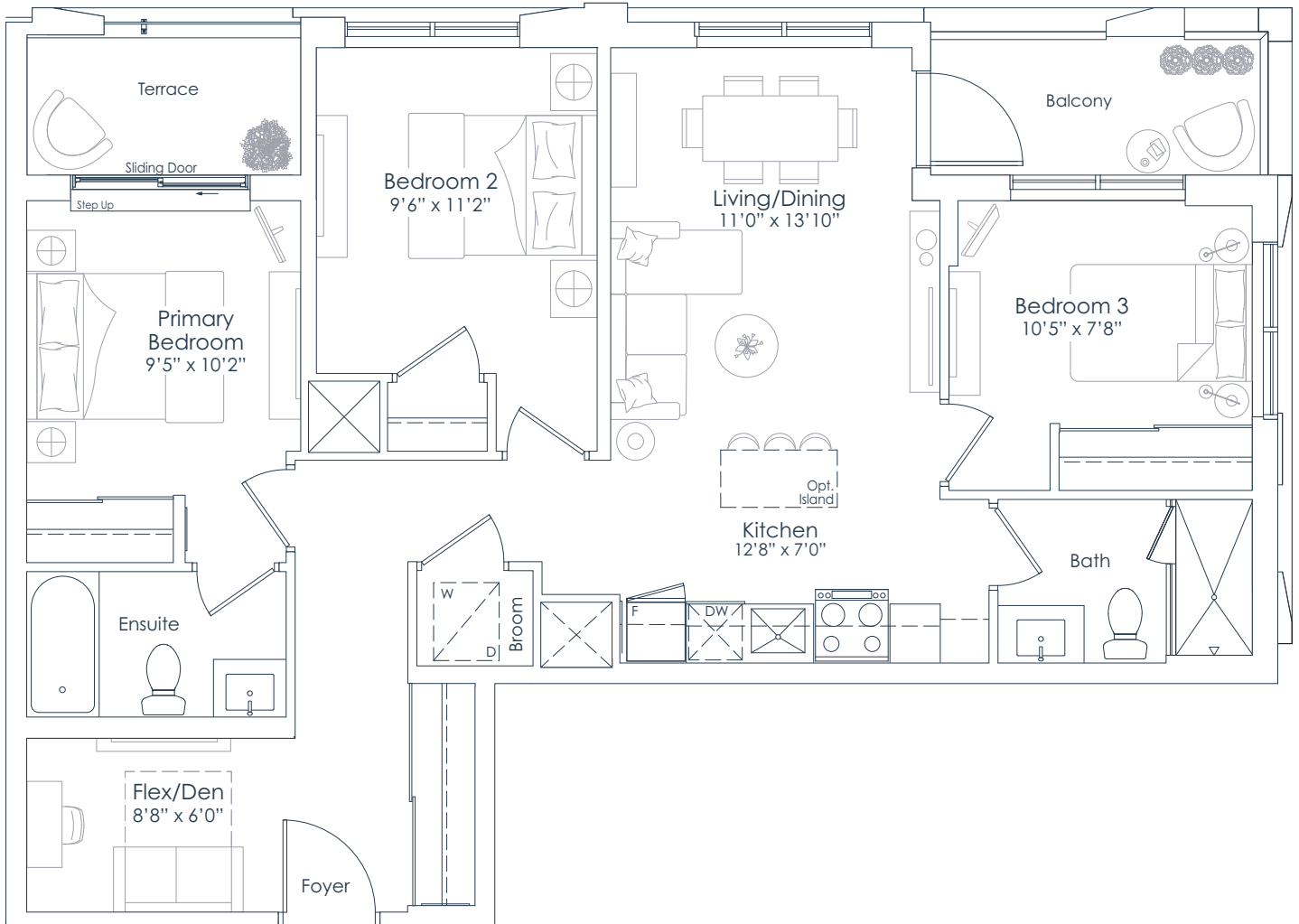


NORTHSHORE

INTERIOR: 998 SF  
EXTERIOR: 92 SF  
**TOTAL: 1,090 SF**  
FLOOR: 3

# 998

**3 BEDROOM+DEN**



FLOOR 3

This plan is not to scale and is subject to architectural review and revision. All details are approximate and subject to change without notice in order to comply with building site conditions and municipal, structural, architectural and/or Vendor requirements. Balconies and/or terraces, if any, are exclusive use common elements, shown for display purposes only and location, size and design of such are subject to change without notice. Actual unit and/or balcony and/or terrace may be a reverse mirror image of the plan presented. Units may include bulkheads, angled windows and/or angled columns. The location, size and type of windows, view treatments (including frit patterning, mullion/metal panel placement or other visual treatments) and exterior building elements may vary without notice. Suites are sold unfurnished. All illustrations are artist concept only. E.& O.E. April 2023 **3C+D-T**

**NATIONAL**  
**H O M E S**

You are the blueprint™

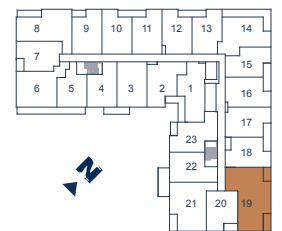
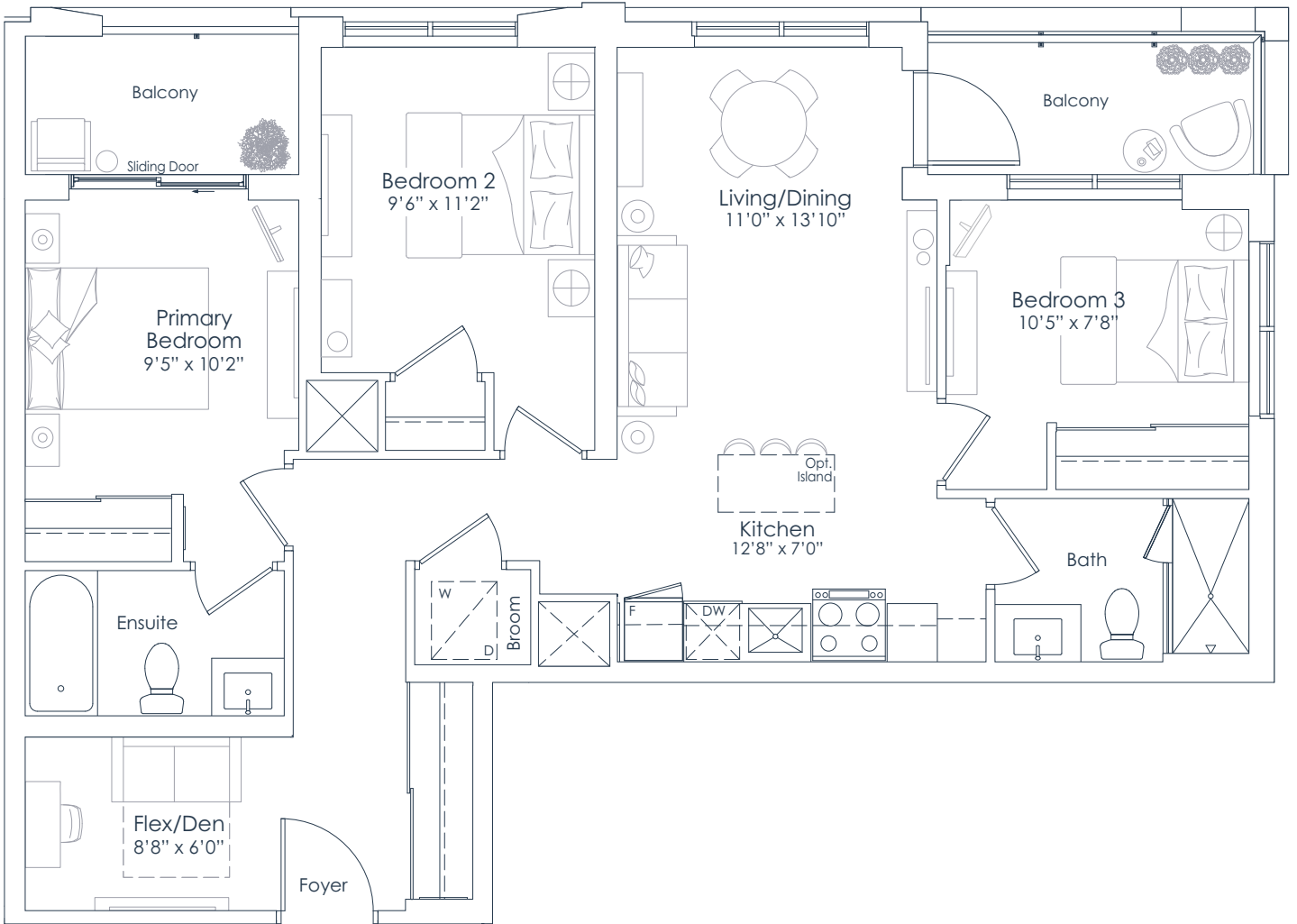


NORTHSHORE

INTERIOR: 998 SF  
EXTERIOR: 92 SF  
**TOTAL: 1,090 SF**  
FLOORS: 4 TO 6

# 998

**3 BEDROOM+DEN**



FLOORS 4 TO 6

This plan is not to scale and is subject to architectural review and revision. All details are approximate and subject to change without notice in order to comply with building site conditions and municipal, structural, architectural and/or Vendor requirements. Balconies and/or terraces, if any, are exclusive use common elements, shown for display purposes only and location, size and design of such are subject to change without notice. Actual unit and/or balcony and/or terrace may be a reverse mirror image of the plan presented. Units may include bulkheads, angled windows and/or angled columns. The location, size and type of windows, view treatments (including frit patterning, mullion/metal panel placement or other visual treatments) and exterior building elements may vary without notice. Suites are sold unfurnished. All illustrations are artist concept only. E.& O.E. April 2023 **3C+D-B**

**NATIONAL**  
H O M E S

You are the blueprint™